



**CHANNEL ISLANDS
SPECIALISTS' SOCIETY**

March 2018

Volume 37 No.1

THE CHANNEL ISLANDS SPECIALISTS' SOCIETY

Founded in 1950

for the study of the stamps and postal history of the Channel Islands

OFFICERS

President: Gerald Marriner FRPSL

E-mail: gerald.marriner@gmail.com

Chairman: David Winnie

E-mail: davidwinnie1@aol.com

Secretary: Richard Flemming

64, Falconers Green, Burbage. Hinckley. LE10 2SX. E-mail: rflemming@talktalk.net

Treasurer: Robert Porter

3, Nursery Road, Hoddesdon. Herts. EN11 9LA. Email: robertwporter@btinternet.com

Journal Editor: David Gurney FRPSL

4, Kingscote, Tree Lane. Plaxtol Kent TN15 0QA. Email: nangurney1@aol.com

Packet Secretary: John Triggs FRPSL

“SUNNYSIDE”, La Gibauderie, St. Peter Port, Guernsey GY1 1XF. E-mail: jtriggs@cwgsy.net

Auction Secretary: Nick Stuart

3, Dudley Road, Walton on Thames, KT12 2JT E-mail:- nick_stuart@talk21.com

Membership & Subscription Secretary: Mark Bailey FRPSL

36, Jerry Moor Hill, Finchampstead, Wokingham. RG40 4UG E-mail: membership@ciss1950.org.uk

Advertising & Press Officer: Stephen Wells

The Hollies. 42, High Street, Tarring. Worthing. West Sussex. BN14 7NR

E-mail: press@ciss1950.org.uk

Competitions Secretary: Alan N. Moorcroft FRPSL

2, Ramparts Court, Bakers Lane, Braiswick. Colchester. CO4 5BJ

E-mail: anmoorcroft@btinternet.com

CISS Internet address:- www.ciss1950.org.uk

Membership is open to all interested in Channel Islands stamps
and postal history, postcards and ephemera.

Membership application forms can be obtained from the Membership Secretary.

Exchange Packets are circulated regularly. A Postal Auction is held twice yearly.

A 36 page colour Journal is published quarterly.

Meetings are held three or four times a year in London and the Provinces.

ADVERTISEMENT RATES IN LES ILES NORMANDES

Outside back cover: £40.00. Full page: £30.00. Half page: £18.00

©The Channel Islands Specialists' Society

SUBSCRIPTIONS and STANDING ORDERS

Will members please note the following points:-

1. Subscriptions, which are due on **1st January**, should be sent direct to **Mark Bailey** and **NOT** to any other officer of the Society. A Subscription Invoice will be sent in the December issue of the Journal.
2. All members may now pay by credit card or PayPal. The amount will be the appropriate subscription rate. Send your card details including number and expiry date to **Mark Bailey**, send your PayPal payment to **treasurer@ciss1950.org.uk**.
3. Overseas members may still pay by STERLING cheque drawn on a U.K. Bank. Non-sterling cheques and non-sterling currency notes will no longer be accepted. Money Orders in sterling currency are acceptable.
4. Members who have not paid by **14th February** are assumed to have resigned.
5. Standing Order forms should be **sent by members to their own bank** and not to the Subscription Secretary.

The Subscription rates for the year 2018 are:-

COUNTRIES	CLASS OF POSTAGE	ANNUAL SUBSCRIPTION RATES in Pounds Sterling
Great Britain	2 nd Class Letterpost	Ordinary Members: £20.00 , or choosing an electronic copy of quarterly Journal in place of a posted hard copy: £15.00 Juniors, Senior Citizens and Registered Disabled: £10.00 , or choosing an electronic copy of the Journal: £7.50 Life Members: £10.00 , or choosing an electronic copy of the Journal: £6.00
Europe	Airmail Printed Paper/ Small Packet Rate	Ordinary Members: £25.00 , or choosing an electronic copy of the Journal: £15.00 Life Members: £10.00 , or choosing an electronic copy of the Journal: £6.00
Rest of the World	Airmail Printed Paper/ Small Packet Rate	Ordinary Members: £30.00 , or choosing an electronic copy of the Journal: £15.00 Life Members: £10.00 , or choosing an electronic copy of the Journal: £6.00

We are pleased to welcome the following new members:-

2165 Donald Andrew, North Yorks; 2166 Jan Bonroy, Belgium; 2167 Roy Burgess, Alderney, C.I.; 2168 Douglas Tomlins, Devon

CONTENTS

Secretary's Clipboard.....	3
London December Meeting Report	4
The Mulready postal stationery used to and from the Channel Islands from 1840	5
Censored Beresford Street, Jersey 1914 registered cover to Holland.....	15
WW1 1916 postcard from German POW in Jersey to Hamburg and a 1940 postcard from Kosovo to Guernsey	17
ALDERNEY –Two new acquisitions of 1854 and 1984	19
Postal Auctions Buyer's Premium – important.....	20
The Electronic Age and the CISS Auctions	21
German Forces Entertainment	23
A cheque used in Occupied Guernsey in March 1945	27
Timmer Ltd	28
1941 pre-printed/pre-paid business card from Germany to Jersey in the 'Difficult Period' with reply	29
1941 cover sent from Newark, USA to the Newpark Hotel in Jersey addressed additionally and unusually <i>German Occupied Territory</i>	31
1871 North German Confederation cover to Jersey	33
NEWS OF MEMBERS.....	34
Forthcoming New Stamp Issues in 2018	34

Whilst every care is taken in the production of this Journal statements expressed in articles in *LES ILES NORMANDES* are the sole responsibility of the author(s) and are not necessarily endorsed by the Editor or by the Channel Islands Specialists' Society neither of whom can be held responsible for the accuracy of the information therein or any consequence arising there from

EDITORIAL

Our new London meeting home at the Waterloo based Union Jack Club proved to be a very comfortable and most reasonable venue. The lunches were superb, the bar cheap and the Competitions brought in a number of entries which was all very good news. Impressed as an infantry veteran of the early 1950s I have joined the Union Jack Club!

Once again this edition features a range of articles from members at home and abroad which continues to be most satisfying. Your Editor always enjoys the more challenging postal history subjects. We are also seeing

some very rare items to be found in the Late Brian Brookes sale due on March 9th in London, some of which may well form articles later this year!

SECRETARY'S CLIPBOARD

by Richard Flemming

Already Spring is on its way and we're thinking of warmer days and longer daylight hours. Already we have held our first meeting at the Union Jack Club and I hope you have found the location and facilities to your liking. In times when societies are becoming more cash-strapped, the savings on room hire will go some way towards maintaining Society funds.

We are now thinking forward to the Members' Weekend that will be held at the Hotel de France, Jersey from Friday, 20th April until Sunday, 22nd April. If you have not already confirmed with the hotel that you are intending to attend, then now is the time to do so, as we can only hold the rooms for so long. I am aware that Gerald Marriner is busy planning the schedule, including the usual "Three sheets to tell a story" after Friday night's dinner, so get your thinking caps on and come up with three sheets, the more the merrier. There will also be a "100 Lot Room Auction" on Saturday so bring your money and bag yourself a bargain!

Looking further ahead, the Annual General Meeting will be held on Saturday afternoon, 14th July 2018. Some important decisions will have to be made at this AGM so I hope to see as many of you there. If you would like to raise a question at the AGM please send your question to the Secretary at least two weeks before (by 1st July) before the AGM so that a response to your question will be, hopefully, available on the day.

Unless otherwise listed, all CISS meetings will be held at the Union Jack Club, Sandell Street, London, SE1 8UJ (near Waterloo Station) starting at 11.00 with coffee/tea at 10.30. Please inform the Secretary at least a week beforehand that you will be attending any of the meetings at the Union Jack Club.

Forthcoming meetings for 2018:

- | | |
|--|--|
| 20 th – 22 nd April 2018 | Member's Weekend meeting in Jersey |
| 14 th July 2018 | AGM and Member's Meeting/Displays |
| 2 nd September 2018 | Member's Meeting. Theme: Channel Islands Occupation. |
| 15 th December 2018 | Member's Meeting. Theme: Letters M and N |

London Meeting, 2nd December 2017 by Richard Flemming

Twenty members attended the meeting with three apologies received. Proceedings were opened by David Winnie, Chairman and then members had the opportunity to view the sixty plus lots on view for the Room Auction with Nick Stuart acting as Auctioneer, Robert Porter keeping tabs on lot winners and Mark Bailey acting as runner. Following the room auction members were invited to show those displays that they had brought with them with the theme being 'Letters K and L' or 'Recent Acquisitions'. **Roger Harris** started proceedings with thirty sheets of Lost Luggage Labels followed by 10 sheets of Lawson Wood, Artist and then 10 sheets of Laufen photographic postcards, concluding with recent acquisitions. **Robert Shaw's** display consisted of 15 sheets titled "Le Miscellany". **David Winnie** showed 32 sheets of material related to La Rocque postal history including single ring datestamps with codes A, B and C, Parcel Post labels x 2 (Types 1 and 2) and a telegram from La Rocque to New Zealand. **Christine Earle** showed two frames titled "Messages of Liberation" which showed an interesting social history of Guernsey post liberation. **Alan Norman** showed 18 sheets titled "CISS 'K'" followed by **John Trigg's** 13 sheets of Jersey Sub-Post offices. **Brian Sole** titled his 16-sheet display as "Guernsey Liberation" including several sheets of 3rd Anniversary of Liberation stamps, including colour proofs and the 2013 Europa set. **Gerald Marriner** showed three frames of material ranging from "Liable to Letter Rate" and postage dues and Jersey hotels beginning with the letter 'L', including the London and South-western Hotel, Lincoln Hotel and The Lion D'Or. Finally, **Richard Flemming** showed a few items of his recent acquisitions, including a 1902 pen and ink illustrated envelope of a three-masted clipper from Yokohama, Japan to Guernsey sent via New York.

As this was the final meeting that the Channel Islands Specialists' Society would be holding at the Royal Philatelic Society London, David Winnie, as Chairman, presented David Taylor, who has looked after members at their meetings over many years, with an engraved silver tankard as a token of our thanks.

The Mulready postal stationery used to and from the Channel Islands from 1840 by David Gurney FRPSL.

The 1d and 2d letter sheets and envelopes bearing the design by William Mulready RA were the world's first pre-stamped postal stationery items available for general and postal use.

Although much ridiculed by the public when first introduced, it was the predominant example of the first pre-stamped postal stationery introduced in this country for general use at home and abroad. This innovation for the pre-payment of postage was eventually taken on by several other postal administrations elsewhere in the world. This was within the climate of the need for postal reform at the time leading to the introduction of Uniform Penny Postage in 1840 here in Great Britain. As early as 1815 the Government had commissioned a number of investigations and these reports made a series of wide ranging proposals. Amongst some of these proposals was a more far-reaching suggestion in 1830 by Charles Fenton Whiting, a security printer, for the introduction of a special Uniform Postal

Rate to be charged on weight and not distance to be travelled by the item concerned.



William Mulready's first 'poetic' design.

By 1837 the Treasury Commission had published several reports and this led to Rowland Hill then producing his pamphlet *Post Office Reform, its Importance and Practicability*, which was subsequently re-published in two further editions. Rowland Hill was thus summoned to give evidence before the Commission which inter-alia included his ideas for stamped covers and sheets of paper which could be sold to the public for a price inclusive of postage. This impressed the Commissioners and further impetus was given to the campaign by Parliament in November 1837 setting up a Select Committee to consider present postage rates and the future rates and collection thereof recommended by Rowland Hill in his pamphlets. By then

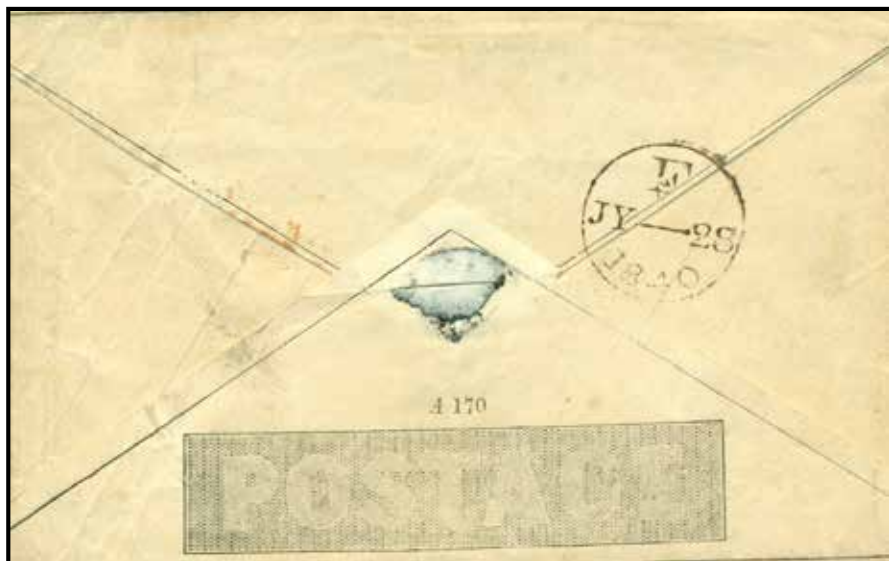
various essays had been submitted for consideration. In August 1839 the Treasury decided on a competition allowing the public to make proposals for the best suggestion for the collection of postage by means of stamps for which the first prize would be £200 and the second £100. Some 2600 entries were considered by Henry Cole, by then Rowland Hill's assistant, and in turn four prizes of £100 each were eventually awarded.

Eventually Mulready's 'poetic' design was accepted and approved on the 4th January 1840. Dies and proofs were then prepared and considerable thought given to the security of the forms against possible forgery. Final approval for the letter sheets and envelopes was given on the 27th April 1840.

Although Post Office Notices advising the date of issue of 1d and 2d stamped letter sheets and envelopes from the 6th May 1840 were first sent out in April 1840, in effect they were only available for sale at some London offices. No pre 6th May usages of the 2d Mulready stationery have so far been recorded although a very few pre 6th May usages of the other 1d items are known from London.



A rare example of a stereo A170 Mulready envelope to Guernsey from London on the 28th July 1840. See next page for illustration of the reverse.
(David Gurney collection).



The back of the stereo A170 envelope showing the London datestamp
F dated July 28 1840.



Mulready 1d letter sheet, HALLETT'S POSTAGE ADVERTISER No. 5 from
Guernsey to Egham dated 18th August 1840 cancelled with
a red inked Guernsey Maltese Cross handstamp.
(David Gurney collection).

8

Having maintained a database of the usage of Maltese Crosses in both Guernsey and Jersey for some 30 years now the Mulready stationery is really quite scarce used from the Channel Islands. By way of example, totals of Maltese Cross handstamps on entires/covers so far recorded are the Channel Islands Cross: 18, the Guernsey Cross: 114 including 9 Mulreadys and the Jersey Cross: 168 including 14 Mulreadys which gives a reasonable idea of their scarcity in the period 1840 to 1844. The 1840 dates of usage that I have so far recorded for Guernsey Mulreadys range from the 5th June 1840 to the 30th October 1840 for seven 1d letter sheets, one 2d letter sheet and one 1d envelope and for Jersey from the 18th May 1840 to 11th December 1840 five 1d letter sheets, one 2d letter sheet and two 1d envelopes. From 1841 there are no further usages recorded for Guernsey whilst in Jersey in the period 1841 to 1844 I have recorded a further five 1d letter sheets and one 2d envelope.

These are, of course, only those with Maltese Cross handstamps that I have noted and others may exist with different postal markings although I suspect very few!

Before illustrating two further examples from my collection an interesting note in the CISS Bulletin No. 98 of March-April 1967 by the Late 'Bill' Newport reported a very late use in Jersey of a 1d A78 stereo advertising Levers and Ackland, Bristol and Hamilton, Adams & Co., London letter sheet with a 1d red plate 78 cancelled by a Jersey duplex on March 10th, 1869 which was sold by Robson Lowe for £24 on 25th January, 1967, an exceptionally late use of such.

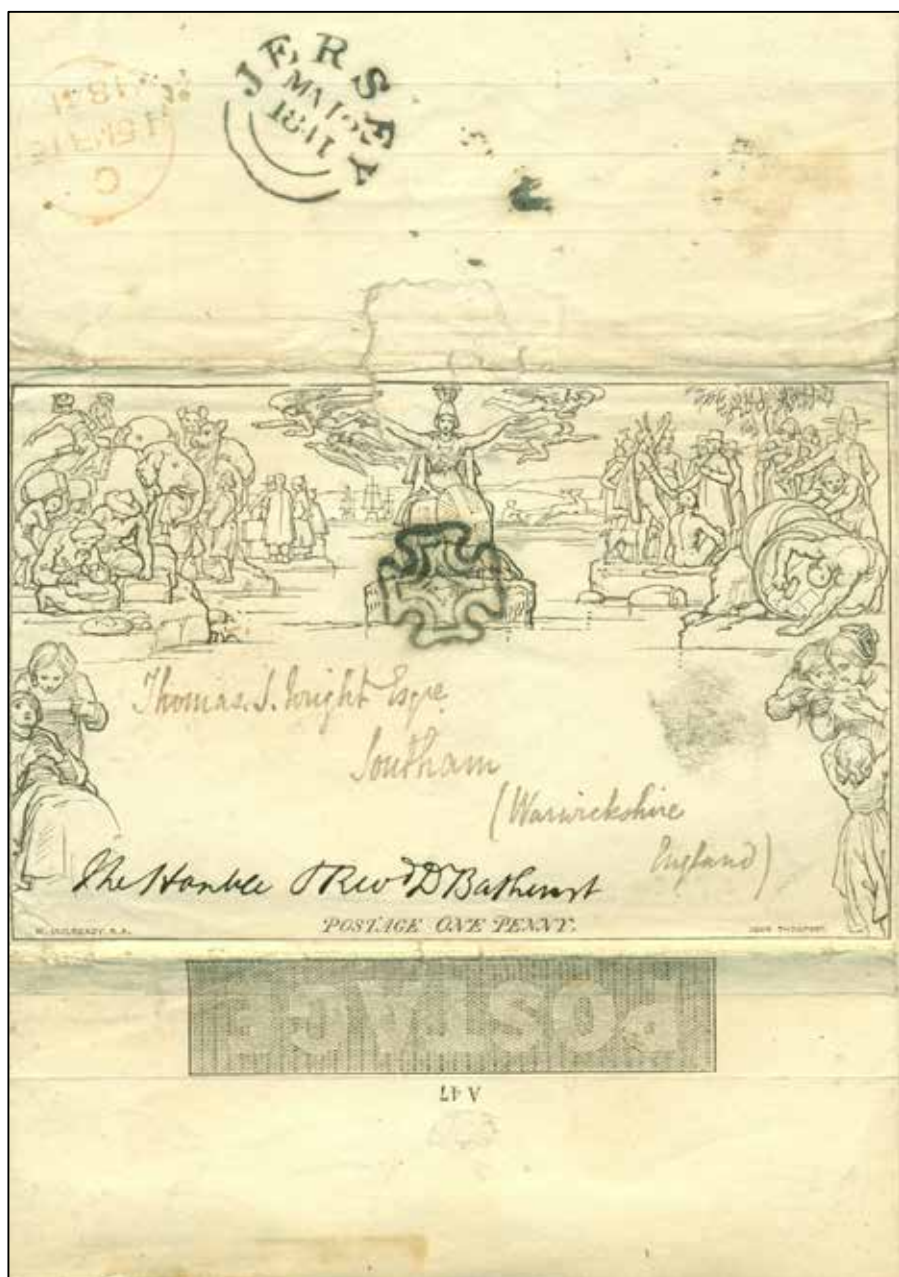
On the next page is only the third Mulready Advertising letter sheet I have come across posted from the Channel Islands, but no doubt others may exist and I will be most interested to have an illustration of any more examples that members may have in their collections.

My next Mulready Letter Sheet into Jersey from Lymington is an advertising sheet, THE LYMINGTON ENVELOPE ADVERTISER printed in blue on the inside (Stereo A 236).



Posted to Jersey from Lymington, Dorset on August 28th, 1840.

(David Gurney collection)



(David Gurney collection).

My final example from Jersey shown on the previous page is a Mulready Letter Sheet Stereo A 47 posted from Jersey on Mar 12th, 1841 to Southam in Warwickshire with fine strikes in black of the Jersey Maltese Cross and on the reverse side a JERSEY dated arc for MA 12 1841 together with a red London transit datestamp code C for the 15th March 1841.

In ending this study I have been intrigued by A.G.Rigo de Righi's statement in his book *The Story of the Penny Black* 'In spite of such eminent scrutiny of the design and the close watch which Mulready and Thompson himself had given the brass die during the long process of engraving, everyone missed the fact that one of the angels (at the top right of the design) only had one foot; and the design was printed and issued in that form.'

Sources and Acknowledgements:

British Postal Stationery by A.K. Huggins

Specialised Stamp Catalogue – Queen Victoria by Stanley Gibbons

The Mulready Postal Stationery by Alan Huggins MBE RDP Hon. FRPSL
and Alan Holyoake RDP FRPSL

The British Postage Stamp by Robson Lowe.

The Story of the Penny Black *and its Contemporaries* by A.G.Rigo de
Righi BA FRPSL

Bulletins of the Channel Islands Specialists Society

PAST JOURNALS and BULLETINS.

The Society has a stock of past issues of the **Bulletins** and the Journal '**LES ILES NORMANDES**'. The Bulletins are available at £0.50 each, and the Journals at £1.00 each, postage and packing is extra. The indices to both the Bulletins and Journals can be found on the website; www.ciss1950.org.uk

To enquire about past issues please contact, Mark Bailey at 36, Jerry Moor Hill, Finchampstead Wokingham RG40 4UG or email:

membership@ciss1950.org.uk

DISPOSAL OF YOUR CHANNEL ISLANDS COLLECTION

If you or your relatives wish your collection to be sold for any reason the Society can help you by arranging for its disposal within the C.I.S.S. through the Society's auctions and circulating Packets which can provide:

1. Best realisation of value to owner or dependents.
2. Demand for Channel Islands material remains high.
3. Modest commission on sales of only 10% plus 2% insurance.

Several collections have been sold successfully to the benefit of the owners. If interested, please contact our Secretary
Richard Flemming at rflemming@talktalk.net
or by telephone 01455 613826.

CHANNEL ISLANDS' LOCAL ISSUES

**HERM, JETHOU, LIHOU,
ALDERNEY PARCEL DELIVERY
SERVICE, COMMODORE SHIPPING
COMPANY,
CHAUSEY AND OTHER FRENCH CHANNEL
ISLANDS,
PRIVATE ISSUES AND REVENUES.**

Regular retail lists and auctions

Please contact me for your copy today.

JON AITCHISON, Old Tithe Hall, Start Hill,
Near Bishop's Stortford CM22 7TF, United Kingdom.
Telephone U.K. 01279 870488. Email britishlocals@aol.com

Censored Beresford Street, Jersey 1914 registered cover to Holland by David Winnie.

I was quite delighted to acquire this interesting registered letter to Holland posted at the Beresford Street Town Sub-Post office on the 3rd October



1914. It bears the Type R2 'C' type Small Sheet registration label issued generally from 1909, in this case with the name **JERSEY** printed uniformly in small upper case lettering thus making the name easier to read in the poorly gas-lit offices of the time.

The Beresford Street 25mm single circle receiving datestamp is shown on the back of this cover before despatch via the Head Post Office in St. Helier, Jersey.

Censorship of mail to and from



Holland began on the 29th August 1914 and the unpreparedness for censorship is in part shown by the rapid changes in the style of the labels used to re-close mail opened by the Censor.

I have two unregistered covers to the same addressee dated the 4th September (this being in the first week of censorship) and the 29th November 1914 in pink and deep pink. The second style of label is shown

above. These were printed on white gummed paper and were used throughout the war. Originally, these labels were un-numbered, but soon numbers were written on the labels, as seen on the above cover, and then printed on to identify the censor in case of query. Numbers were not re-allocated when a censor left the service. The small un-numbered white paper labels were used to close small covers and two were used to re-close my registered letter, but there are examples of five of these labels used to re-close and seal registered mail, demonstrating that they were not very practical for 'run of the mill' mail.

My grateful thanks go to Graham Mark for his valuable assistance on the Censorship of mail into Holland in WWI.

ANY UNWANTED SOCIETY JOURNALS?



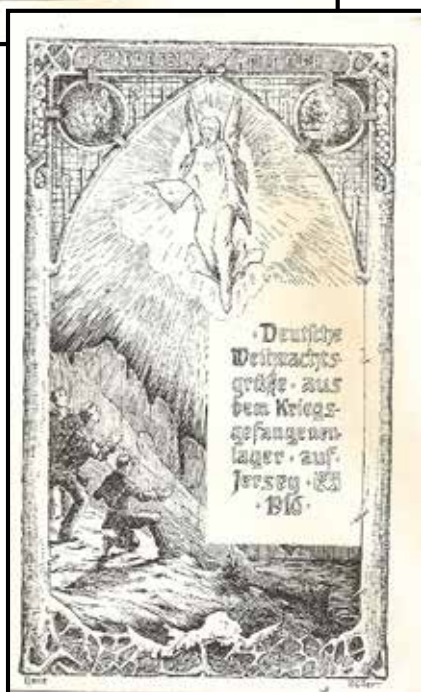
Please do **not** throw your Journals or old Bulletins away. Send to the Membership Secretary, Mark Bailey 36, Jerrymoor Hill, Finchampstead Wokingham RG40 4UG for recycling to others.

**WW1 1916 postcard from German POW in Jersey to Hamburg.
and a 1940 postcard from Kosovo to Guernsey** by Henri Chartier.



Our member in St. Malo, Henri Chartier, writes that members may be interested to see his recent acquisitions. The pictorial side of this scarce example of a German P.O.W. card from a camp in Jersey back to Hamburg has had to be reduced to fit the page, but remains nonetheless quite clear.

And on the next page a postcard of April 1940 from Kosovo into Guernsey – a very unusual pre occupation item.



ALDERNEY –Two new acquisitions of 1854 and 1984

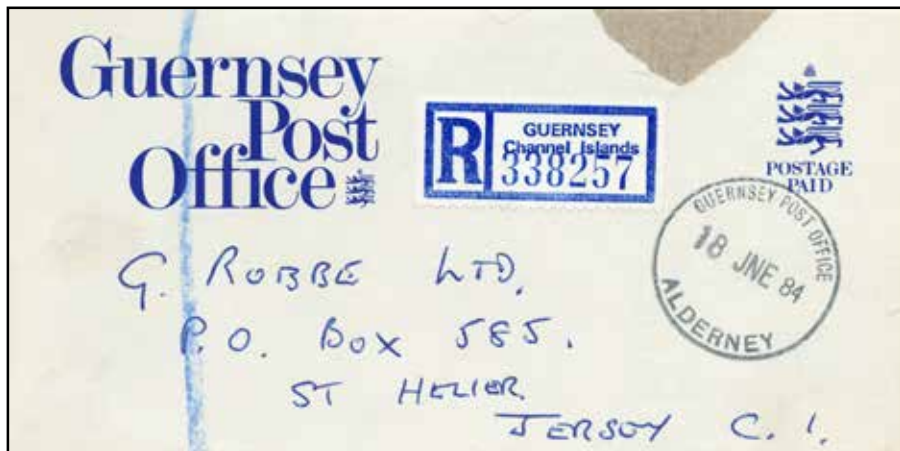
by Guy Dandoy

I recently acquired this very nice Alderney envelope of 02/12/1854, in



unpaid good condition which David Gurney referred to Alan Moorcroft for confirmation of the rates at that time. Alan writes *'The letter was posted unpaid - it was not compulsory to pre-pay at this date to France.'*

The handstruck '8' was applied in France and covered the Island to France concession rate - even though via London - of 3d and 5 dec French inland rate. Nice from Alderney. On the 1st January 1855 the rate changed to 4d CI to France and 5dec French inland mail had to be prepaid, if not it was charged extra. This was the Anglo French Treaty of 1854. So this item is in the last weeks of the 8d rate.'



My second recent acquisition is this June 1984 registration label sent from Alderney on the 18th June 1984 which seems to be a new label for Alderney in 1984 and I feel is between Gurney Types AR11 and AR12? Have other members similar examples and, if so, could you send copies to the Editor please.

Postal Auctions Buyer's Premium - important

As from the start of 2018 the Society, like all organisations, can no longer add a 5% charge for the use of credit cards or PayPal. Also our bank charges have been increased as we are a small and occasional user of these facilities.

It is therefore with the greatest reluctance that we need to add a Buyer's Premium of 3% to all auction invoices, with immediate effect, to recover these extra costs imposed on us.

The Electronic Age and the CISS Auctions

by Nick Stuart, CISS Auctioneer

In our last October 2017 auction there were 634 lots of which 184 were scanned either to put up onto the CISS website or to meet individual members' requests. As a result of receiving the scans, many bids were made as the auctions contain a wide variety of reasonable stamps, postal history, ephemera and postcards. Members like to see images before they buy.

Auction catalogues are posted out to all UK and CI based members and electronically to our overseas members because of the high postage costs. This triggers a large number of requests for scans which I'm happy to provide.

It seems to me that those members who do not have e-mail addresses or have not notified Mark Bailey, our Membership Secretary, (membership@ciiss1950.org.uk) that they have an email address are missing out on seeing the wide range of material offered in the auctions.

Also, after each auction closes, the unsold lots are made available on a first come first served basis. As the buying window is just two weeks this list can only be sent out electronically so every member receiving it gets the same opportunity to buy some bargains. Regrettably, those without e-mail addresses miss out.

So, I urge all members without e-mail addresses to get one before our next auction goes live and then tell our Membership Secretary. Once done you can get the most out of your membership and see what you are interested in before you bid.

Please note that all members' contact details including e-mail addresses held by the Society are confidential and accessible only by the CISS Committee. They are used solely by the CISS to communicate CISS matters. They are not shared with any other organisation.

JERSEY and GUERNSEY

A large stock of all issues from their first issues in October 1969 to date. Our stock includes Mint, Used, FDC and Presentation Packs also a large Stock of Pre-Independent issues of Occupation and Regionals.

Send for our latest Price List today (Free of Charge) and see for yourself.

**We also stock C. I. Postal History & Postcards
L.L. and Allix wants list welcome.**

G. ROBBE LTD PTS
YORK CHAMBERS
YORK STREET
ST HELIER JERSEY JE2 3RQ
TEL 01534 723084 FAX 01534 767680
E.MAIL: robbestamps@hotmail.com

German Forces Entertainment

by Ron Brown FRPSL.

It was considered important to maintain the morale of German forces of occupation throughout Europe and during their free time entertainment was organised to help them forget the miserable conditions of front line service in all theatres of war. The troops were entertained by a variety of artists e.g. musicians, comedians and theatre acts and I show some Jersey letters.

The entertainment was organised by K.d.F (Kruft durch Freude) which translates as 'Power by Happiness' and special theatre groups were established. Variety stage acts were organised which were sent to the different front line theatres in Europe during WW2. One of these theatre troupes was the Army Troup Königsfeld which brought mime shows.



The letter inside shows this was sent by an actress of the mime show group

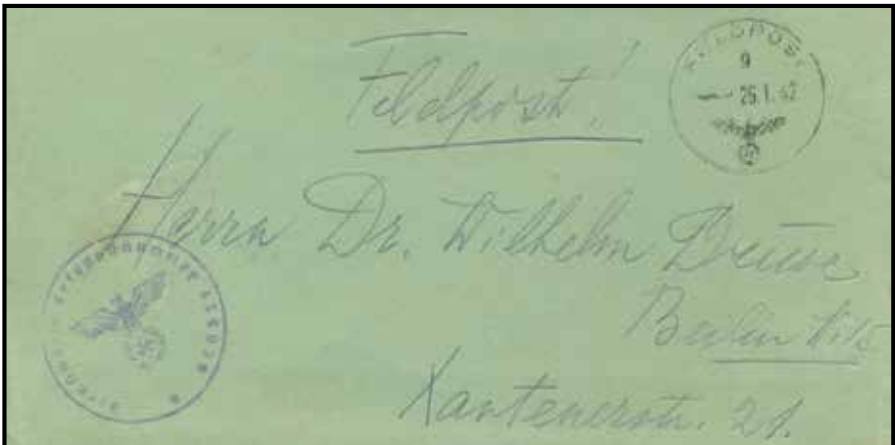
Hier gibt es kein Papier -
 was will ich für einen
 noch schreiben?
 Hier Du mich jitt
 nicht bestellst noch
 Du
 jitt nicht meine
 hat
 nicht mit mir glaubt
 werde ich dich nie
 nie erreichen in
 niedrigen sehen in Freude und
 dich nie mehr besitzen. Nun
 ist für mich alles aus-
 T.

'Der Müde Theodor' in Jersey on the 20th January 1942. This theatre group did not have a Field Post number of their own, but were entitled to use the free service of the Field Post. They used the Field Post number of the unit that engaged the troop which in Jersey



was the 3rd Company of the Air Force Construction Battalion 4(XII) which used the Fp-Nr L28794 shown on the red Dienststelle back stamp, the L signifying Luftwaffe. Field Post covers of this nature are extremely scarce.

Next I show a sad and very private letter from Tamara Duwe, an actress with the theatre entertainment group to her husband, Dr Wilhelm, in Berlin.



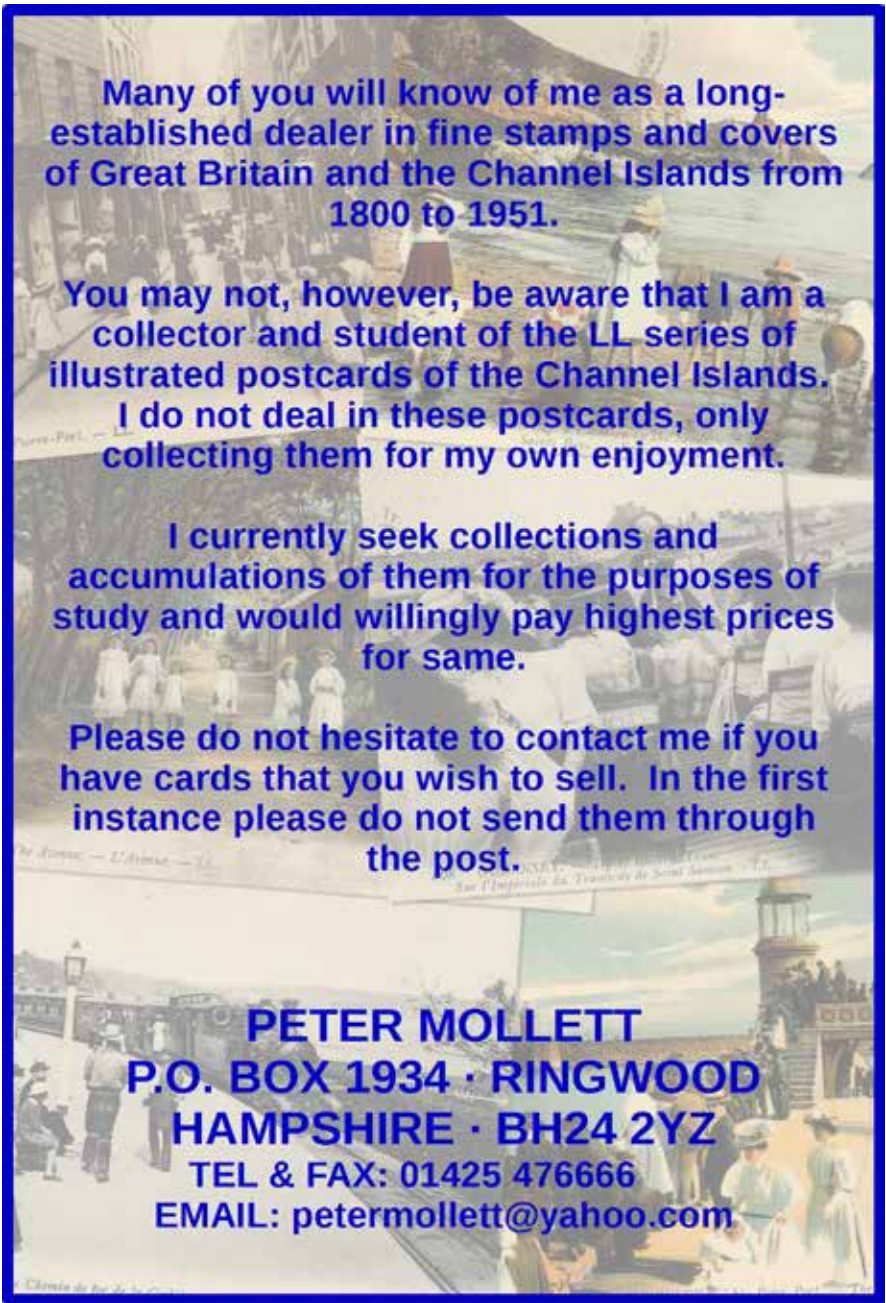
Note the FELDPOST datestamp at top right code 'g' 25.1.42 and unit canceller Fp-Nr. 435078 at lower left.

It appears Wilhelm wished to end their marriage, but she is obviously still very much in love with him and she says she will finish her engagement and come to Berlin at the beginning of February. She is worried that he will go to France and says she will travel to France to meet him. She also says that she has tried to get a phone call to him and has contacted the Field Commander. She goes on to say it is difficult to obtain paper and has had to use part of a printed birth announcement

Tamara Düne
K. D. F. Wehrmachtstour
Rumpfelt
Zurück zu Theodor
in der L. G. P. A.
Krieger

card illustrated on the last page! A part of the actual letter is shown below.

Teufel kommte...
Liebe Willi! Ich war sehr auf der
Pfeife! Kommte...
für ein Telefongespräch...
auf irgendeine Weise Berlin aus...
verrichten. Ob es was ergibt, ist noch
unbekannt, aber ich werde es
versuchen. In Folge des Gesprächs sind
sein Frau K. zu mir zu kommen so
frach als möglich. Ich bin bereit zu sein.
In mindestens 1 Monat bleibt
für mich spielt. Dann spielt auf
aber du zusatz das noch weiter
aber Frau K. spielt die Rolle aber
ich komme zurück weil du in
Frankreich sein willst. Dann kann
ich wie du überhört...

The background of the advertisement is a collage of several vintage postcards from the Channel Islands. The top left shows a busy street scene with many people. The top right shows a lighthouse on a rocky shore. The middle left shows a group of people in period clothing. The middle right shows a lighthouse on a hill. The bottom left shows a street scene with a lighthouse in the background. The bottom right shows a lighthouse on a hill. The text is overlaid on this collage.

Many of you will know of me as a long-established dealer in fine stamps and covers of Great Britain and the Channel Islands from 1800 to 1951.

You may not, however, be aware that I am a collector and student of the LL series of illustrated postcards of the Channel Islands.

I do not deal in these postcards, only collecting them for my own enjoyment.

I currently seek collections and accumulations of them for the purposes of study and would willingly pay highest prices for same.

Please do not hesitate to contact me if you have cards that you wish to sell. In the first instance please do not send them through the post.

PETER MOLLETT
P.O. BOX 1934 · RINGWOOD
HAMPSHIRE · BH24 2YZ
TEL & FAX: 01425 476666
EMAIL: petermollett@yahoo.com

A cheque used in Occupied Guernsey in March 1945.

by David Gurney FRPSL

I have been shown this cheque by a local philatelic friend writing in the Newsletter of The Insurance & Banking Philatelic Society of Great Britain which is reduced in size from approx. 8 inches x 3 inches.



From a banking viewpoint this is a counter cheque drawn for cash and properly endorsed on the reverse side. The signature has been suitably cancelled and the cheque imprinted with the date of payment. The added Guernsey 1d bright mauve revenue (GRA13) is from the 1941 Guernsey Press printing similar to the October 1944 cheque in the Late John Simpson's *CHANNEL ISLANDS REVENUES*.



In Guernsey the stamp duty on cheques was raised from one penny to twopence from the 21st August 1940 contrary to the practice in Great Britain where the stamp duty had been increased, I believe, shortly after World War 1. The need to increase revenue by the States of Guernsey arose following the German military occupation of the Island and this tax increase was preceded by the introduction of a Sales Tax from the 20th August 1940, not dis-similar to the Purchase Tax in mainland Great Britain in October 1940, another form of tax on the purchase of 'luxury' goods. See Journals Vols 30/3, 30/4 and 31/1 for more information.

Timmer Ltd

by Bob Woodward

In the December 2017 Journal Geoff Cory illustrated a cover, dated 25 July 1940, sent from Timmer Ltd to Dr Maas of the Occupying Authorities. Although referred to in many histories, I would suggest William M. Bell's book 'Guernsey Conquered but Never Beaten' as a good source of Gerrit Timmer's activities. Briefly, within days of the beginning of the Occupation, Timmer saw potential opportunities in selling fruit, vegetables and flowers to the Germans. These were paid for by the Guernsey authorities and even when the civilian population was starving Timmer continued to grow flowers in glasshouses seized by the Germans. Understandably this activity did not endear him to the Island Authorities. After the war he was cited as having a detrimental effect on the health of the Islanders.

Bell quotes from a letter, dated 16 July 1940, to Timmer from Dr. Maas. Therefore Geoff Cory's cover, although early, did not contain the first contact Timmer had had with Dr. Maas.

Interestingly in August 1940 the Germans allowed Timmer to take over the former Quay Branch Office on White Rock to be used as an export office. This Sub-Post Office had closed in 1939 and did not re-open until 1948.

GUERNSEY MONTHLY MEETINGS

**CISS and RPSL members are welcome
to attend monthly meetings in**

**Guernsey, contact John Triggs on
01481 725847 or jtriggs@cwgsy.net.**

**Meetings held on Friday evenings, starting at 7pm
in the St Sampson suite at the Peninsula Hotel.**

**Dates are March 23rd, April 27th, May 25th, June
29th, July 27th, August 31st, September 28th, October
26th, November 30th, December 14th 2018.**

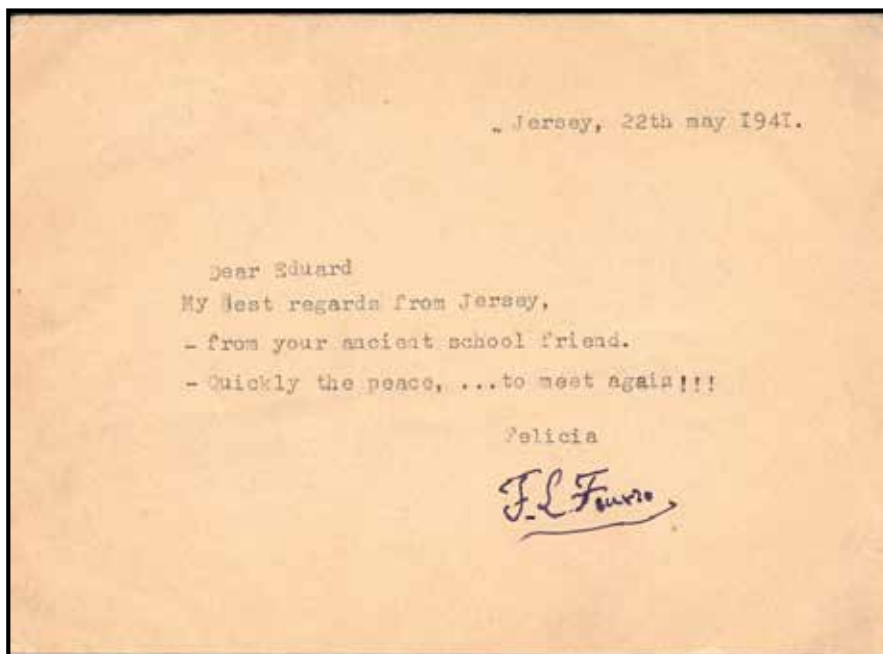
An interesting 1941 pre-printed/pre-paid business card from Germany to Jersey in the 'Difficult Period' with reply, stamp cancelled with the cachet CHERBOURG A PARIS by Geoff Cory.



I recently acquired this very interesting card with the cachet cancel and referred it to Michael Wieneke who comments *"Once again a cover when the mail service between the Channel Islands and the Continent was not really a stable system. This item, as the railway cover with the bisect, was brought to Granville and from there to Valonges to meet the express train from Cherbourg to Paris. On the train, this and the bisected item shown in the article in the last Journal were cancelled in the mail wagon of the TPO. I am a bit puzzled that the cover did not see the censor either in Cologne or Frankfurt, but in those days not all items had to be censored. It was as we say in Germany only a "Stichproben" (picked out by chance) censorship. I agree with your opinion that this cover was a pre-printed and franked stationery item, hence the German inland rate of 6Pfg. Once again the sending office did not apply a Postage Due mark and because of that the French accepted the 6Pfg rate. Concerning the TPO cancellation, one has*

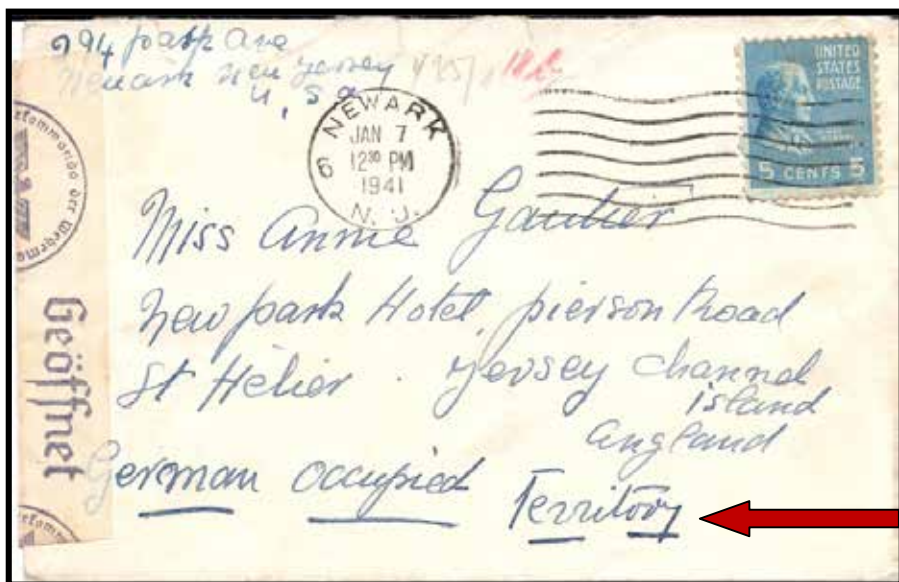
to keep in mind that the train connection Paris to Cherbourg was the most important train connection before the war and up to the 1960's. This was the reason that the Germans selected Granville as the supply station for the Channel Islands and the "point of exchange" for the mails. Hence they established the "Zufuhrstelle of FK 515" and the fieldpost office 319 for the units in Granville and a sub office in Guernsey. Again, the field post office in Jersey was also a sub office of the head office in Valonges (later Cherbourg)."

I am very grateful to Michael for this detailed and excellent appraisal of the cover. My only comment would be that an additional possible explanation for the lack of sight by a Censor could be that, owing to this being a pre-printed and pre-stamped German card at the German Inland rate, it was placed in the German Inland mail system when it was removed from the Paris/Cologne train.



I would be most interested to learn if any member has any mail in their collections to or from either of the two card correspondents Miss Felicia Le Feuvre of St Brelade and/or Mr Eduard Pott of Kassal.

1941 cover sent from Newark, USA to the Newpark Hotel in Jersey addressed additionally and unusually *German Occupied Territory* by Geoff Cory



I have recently been very fortunate to find and acquire this USA cover sent to the Islands during the early years of the war which followed a torturous route and this passage resulted in lengthy delivery delays. The cover first arrived at Lisbon and was then transported by regular mail services to Madrid, Berlin and Cologne where it was opened and censored. I referred this cover to Michael Wieneke in Germany who has always been most helpful in dealing with any questions in regard to German Occupation matters and in his opinion by the time the cover arrived in Cologne the mail channels for the Channel Islands were established and working properly, more or less. Its next stop was in Paris where the French mail system handed the cover to the Feldpost who delivered it to Jersey via Granville. Clearly this whole process lasted many months. Michael does, however, say that although not a "difficult period" cover it is a scarce early USA cover to the Islands and was addressed to *German Occupied Territory* to ensure that it was correctly sorted (destination Lisbon rather than Great Britain) before it commenced the delivery process. My own feeling is that

this is clearly very close in time to the "difficult period" and it would be interesting to identify the dates of other members' incoming USA covers into the Islands, most particularly if the covers contained dated letters!

Michael has subsequently said to me that upon further thought he is not absolutely sure that the cover went to Berlin, because the train with the mail normally went Paris – Brussels - Cologne. It is possible that the mail for the Channel Islands was taken off the train at Cologne, at that time the primary Censor Office for Channel Island mails.



1871 North German Confederation cover to Jersey

by David Parsons

I refer back to the article on page 30 of the last Journal regarding Dr Hans Wildebeek's 1858 Braunschweig cover and can report this 1871 cover from Friedberg to Jersey which I have had in my collection for years and cannot recall from where I acquired this!



The back of the cover just reflects the Jersey Head Post Office B 2 single circle receiving datestamp for May 4th 1871.



NEWS OF MEMBERS

**CONGRATULATIONS TO MARK BLADES (No.192),
Yorks and JOHN GILBERT (No.193), London,
who joined the Society in 1968.**

It is with very great pleasure that the Society recognises this achievement of 50 years of active membership and extends warmest congratulations and thanks for such continuing support.

Congratulations also to our following members for their successes at Brasilia 2017:

Chris King RDP FRPSL Gold (PH). GB “Denmark and the Napoleonic Wars 1801 – 1818”

Christine Earle FRPSL Gold (Th).GB “Extracts from a Wartime Diary 1939 – 1945”

We very much regret to record the recent deaths of 185 Peter Saunders, Essex; 255 John Goodwin, Guernsey; 1890 David Manship, Leics; 2111 Gordon Low, Suffolk.

FORTHCOMING NEW STAMP ISSUES – 2018.

GUERNSEY POST

3rd April 2018 RAF100: 201 Squadron (Guernsey's Own)

Set of 6 stamps	£4.26
First Day Cover	£5.46
Presentation Pack	£5.16
Sheets of 10	£12.60
Miniature Sheet	£3.00

First Day Cover	£4.20
Presentation Pack insert	£4.90

2nd May 2018 EUROPA: Bridges

Set of 6 stamps	£4.26
First Day Cover	£5.46
Presentation Pack	£5.16
Sheets of 10	£42.60
Souvenir Sheet	£4.26
First Day Cover	£5.46
Presentation Pack insert	£4.46

The Royal Wedding: Prince Harry and Meghan Markle

Miniature Sheet (2 stamps)	£4.00
First Day Cover	£5.20
Presentation Pack	£5.90

ALDERNEY

23 May 2018 65th Anniversary of The Queen's Coronation

Set of 6 stamps	£4.26
First Day Cover	£5.46
Presentation Pack	£5.16
Sheets of 10	£42.60

JERSEY POST

31st March 2018 - 100 Years of the RAF

Set 6 stamps	£4.79
First Day Cover	£5.94
Presentation Pack	£5.94
Souvenir Miniature Sheet	£1.59
First Day Cover	£2.74
Presentation Pack	£2.74
Prestige Booklet	£14.37

16th May 2018 Dam Busters – 75th Anniversary of Operation Chastise

Set of 6 stamps	£4.79
First Day Cover	£5.94
Presentation Pack	£5.94
Miniature Sheet	£2.00
First Day Cover	£3.15
Presentation Pack	£3.15

25 May 2018 JSPCA – Jersey Animal Shelter – 150th Anniversary

Set of 8 stamps	£8.81
First Day Cover	£9.96
Presentation Pack	£9.96
Souvenir Miniature Sheet	£1.76
First Day Cover	£2.91
Presentation Pack	£2.91

18 June 2018 Frankenstein – 200 Years

Set of 8 stamps	£8.81
First Day Cover	£9.96
Presentation Pack	£9.96
Miniature Sheet	£3.00
First Day Cover	£4.15
Presentation Pack	£4.15
Souvenir Sheetlet	£8.81
First Day Cover	£9.96
Presentation Pack	£9.96

Due to the loss of LVCR, Jersey Post now collects the appropriate rate of VAT on the various products at the point of sale and pre-pays HMRC on all orders entering the UK. Post & packing charges CI - £1.85, UK - £1.94 (incl. VAT), Europe - £ 2.00 and the Rest of the World - £3.00. Note: This is the basic charge only.

Jersey Post charges 5% GST to Jersey customers on CTO stamps (and complete CTO sheets) only.

C.I.S.S. PUBLICATIONS

**Our current stock of merchandise at
reasonable prices.**

However postage is extra and will be invoiced.

Write to: C.I.S.S. Book Sales at 64, Falconers Green, Burbage.
Hinckley. Leics. LE10 2SX or Email – rflemming@talktalk.net

- | | |
|--|--------|
| 1. 'waists getting waspish' – A Guernsey Red Cross study (76pp) | £6.00 |
| 2. The Post Office in the Smaller Channel Islands (154pp) | £12.00 |
| 3. The Postal History of the Guernsey Sub-Post Offices (265pp) | £10.00 |
| 4. Red Cross Postal Message Scheme with the Channel Islands
during the Occupation 1940-45 (389pp) | £8.00 |
| 5. Islanders Deported Part 11 (246pp) | £4.00 |
| 6. The Postal History of the Jersey Sub-Post Offices (376pp)
(<u>This book is reduced in price as staples are slightly rusting</u>) | £15.00 |
| 7. Registered Mail of the Guernsey Sub-Offices 1968-1990 Vol 2 | £3.00 |
| 8. Registered Mail of the Guernsey Sub-Offices 1968-1990 Vol 3 | £3.00 |
| 9. Jersey & Guernsey Slogan Postmarks of the 20th \century (85pp) | £7.50 |

Also available:-

Binders for 'Les Iles Normandes' holding 12 issues @ £4.50 each or
three for £12.50 plus postage.

Society Ties: In blue or maroon with CISS motif @ £8.00 each plus postage.

Payment may be made by Visa/Access/Mastercard or Paypal.

Please quote your card number, expiry date and card settlement address.

**Please do not send payment until you receive an invoice
for the cost of your order plus the postage and packing.**

Channel Islands

at Auction

Grosvenor holds regular specialised public auctions of Great Britain stamps and postal history in central London, heart of the international philatelic market, achieving consistently high results. Interesting Channel Islands material features regularly.



Each auction is available to view, with additional illustrations, on our website, **www.grosvenorauctions.com**, and our exceptional printed catalogues are generously distributed, complimentary copies being available on request.

We work closely with collectors to ensure that presentation and prices meet vendors' highest expectations. Commission charges are generous, fully inclusive, and negotiable for valuable consignments. Contact **Andrew Williams** or **Glyn Page** today at the address below for further information on how Grosvenor can maximise the sale potential of your collection.

GROSVENOR

399-401 Strand 2nd & 3rd Floors London WC2R 0LT

T: 020 7379 8789 F: 020 7379 9737 E: info@grosvenor-auctions.co.uk

www.grosvenorauctions.com