



**CHANNEL ISLANDS  
SPECIALISTS' SOCIETY**

March 2013

Volume 32 No.1

# THE CHANNEL ISLANDS SPECIALISTS' SOCIETY

*Founded in 1950*

*for the study of the stamps and postal history of the Channel Islands*

## OFFICERS

**President:** Alan N. Moorcroft FRPSL

**Chairman:** Dave Edwards

**Secretary:** Gerald Marriner FRPSL

3, Barfoot Close, Fleckney. Leics. LE8 8TD

E-mail:- [gerald.marriner@gmail.com](mailto:gerald.marriner@gmail.com)

**Treasurer:** Robert Porter

3, Nursery Road, Hoddesdon. Herts. EN11 9LA

**Journal Editor:** David Gurney FRPSL

Yopps Green Cottage Yopps Green Plaxtol Kent TN15 0PY

**Packet Secretary:** John Triggs

“SUNNYSIDE”, La Gibauderie, St. Peter Port, Guernsey GY1 1XF

**Auction Secretary:** Gavin Wood

3, Hockenhull Crescent, Tarvin. Chester. CH3 8LJ

**Membership & Subscription Secretary:** Moira Edwards

86, Hall Lane, Sandon. Chelmsford. Essex. CM2 7RQ

**Advertising & Press Officer:** Stephen Wells

The Hollies. 42, High Street, Tarring. Worthing. West Sussex. BN14 7NR

**Competitions Secretary:**

**CISS Internet address:- [www.ciss1950.org.uk](http://www.ciss1950.org.uk)**

**e-mail addresses:- [gerald.marriner@gmail.com](mailto:gerald.marriner@gmail.com)**

Membership is open to all interested in Channel Islands stamps  
and postal history, postcards and ephemera.

Membership application forms can be obtained from the Membership Secretary.  
Exchange Packets are circulated regularly. A Postal Auction is held twice yearly.

A 36 page colour Journal is published quarterly.

Meetings are held three or four times a year in London and the Provinces.

## ADVERTISEMENT RATES IN LES ILES NORMANDES

Outside back cover: £40.00. Full page: £30.00. Half page: £18.00

©The Channel Islands Specialists' Society

## SUBSCRIPTIONS and STANDING ORDERS

Will members please note the following points:-

1. Subscriptions, which are due on **1<sup>st</sup> January**, should be sent direct to **Moira Edwards** and **NOT** to any other officer of the Society. A Subscription Invoice will be sent in the December issue of the Journal.
2. All members may now pay by credit card. The amount will be the normal subscription plus 5% for charges. Send your card details including number and expiry date to **Moira Edwards** and to no one else.
3. Overseas members may still pay by STERLING cheque drawn on a U.K. Bank. Non-sterling cheques and non-sterling currency notes will no longer be accepted. Money Orders in sterling currency are acceptable.
4. Members who have not paid by **14<sup>th</sup> February** are assumed to have resigned.
5. Standing Order forms should be **sent by members to their own bank** and not to the Subscription Secretary.

**The Subscription rates for the year 2013 are:-**

COUNTRIES	CLASS OF POSTAGE	ANNUAL SUBSCRIPTION RATES
Great Britain	2 <sup>nd</sup> Class Letterpost	<u>Life Members:</u> £6.00 <u>Credit card:</u> £6.30 Ordinary Members: (18-65): £15.00 <u>Credit card:</u> £15.75 Juniors, Senior Citizens and Registered Disabled: £7.50 <u>Credit card:</u> £7.88
Europe	Airmail Printed Paper/ Small Packet Rate	<u>Life Members:</u> £6.00 <u>Credit card:</u> £6.30 Ordinary Members sterling: £15.00 <u>Credit card:</u> £15.75
Rest of the World	Airmail Printed Paper/ Small Packet Rate	<u>Life Members:</u> £6.00 <u>Credit card:</u> £6.30 Ordinary Members sterling: £17.00 <u>Credit Card:</u> £17.85

**We are pleased to welcome the following new Members:-**

2097 Sheila Mallet, Jersey; 2098 Rupert Hague-Holmes, Jersey;  
 2099 Stuart Phillips, Cheshire; 2100 Howard Wunderlich, USA.

We regret to record the recent death of 698 Lewis Elliott, Goring-by-Sea.

## CONTENTS

Editorial.....	2
Secretary's Clipboard.....	3
Important Notice – Change of date of 2013 AGM .....	4
CISS Meeting, London, Saturday 17th November, 2012 .....	4
November 2012 Auction - Some Realisations.....	5
Jersey April Weekend – Thursday/Saturday Provisional Programme .....	5
An 1840 Mulready envelope to Jersey.....	6
Forged enhancements to German Occupation envelopes .....	7
New Life Members .....	8
An unrecorded Jersey registration handstamp .....	9
News of Members .....	10
Members Wants.....	10
Brecqhou Island Postal Affairs .....	10
Ettore Arcelli – An Italian in the wrong place at the wrong time .....	11
1803 Wrapper from St Croix, Virgin Islands to Guernsey.....	26
JERSEY Modern Postage Due Markings .....	30
A very unusual Occupation advertising cover .....	32
Forthcoming New Stamp Issues – 2013 .....	35

Whilst every care is taken in the production of this Journal statements expressed in articles in *LES ILES NORMANDES* are the sole responsibility of the author(s) and are not necessarily endorsed by the Editor or by the Channel Islands Specialists' Society neither of whom can be held responsible for the accuracy of the information therein or any consequence arising there from

## **EDITORIAL**

Included in this edition is the final half of Ron Brown's study of the correspondence of an Italian resident of Jersey, first interned by the British in 1940 and then released by the Germans following their Occupation of the Island. Other diverse and interesting articles on postal history and stamps are included too.

Concern continues over the increasing numbers of forged and enhanced Occupation items appearing in the market and an illustrated note on pages 7 and 8 re-visits this. If in any doubt **DO** refer to us before purchasing anything either from dealers or from the Internet that you might suspect.

## **SECRETARY'S CLIPBOARD**      **by Gerald Marriner FRPSL**

I am writing these notes on a frosty morning early in the New Year. We can reflect that 2012 was another successful year for our Society. However, I worry as to the future of our great hobby. Now with the age of electronics dominating people's spare time, hobbies such as ours are finding it more difficult to attract new younger members. It appears that the fun of collecting has diminished. Because of emails, less mail arrives through the letter box and when it does, it is rarely enriched with a stamp. Consequently, I feel that we do not market our hobby to younger people sufficiently enthusiastically. Is this decline worldwide? So, my thought for the New Year is how can we try to reverse this trend.

Secondly, I would like to see more of our members (**YES, YOU!!**) attend our meetings. We have very friendly meetings and the displays shown are NOT 'high powered!' We have introduced short room auctions. We **mostly** go to the 'Pub' for lunch. Why not make a New Year's Resolution to attend one of our meetings **and enjoy the displays and company**.

There are still places available for our Jersey weekend meeting in April. If you have mislaid your booking form, another form is enclosed

The weekend will be at the Mayfair Hotel in St Helier, Jersey from 12<sup>th</sup> to 14th April. We have used this hotel before so please come along and help to make it an enjoyable and memorable weekend.

**\*\*\* Please note the revised date for the AGM – see below. \*\*\***

It is hoped that the 28 September meeting will be in the Bournemouth area for a change and NOT London. More details in the next Journal.

Advance notice – I have again arranged for an outside speaker to give a Social Philately display at the December meeting. The subject will be Scott of The Antarctic. The speaker will be Trevor Cornford. I have seen this fantastic display which also includes letters from Scott and postcards.

Our London meetings at 41, Devonshire Place, close to Baker Street and Regents Park Underground Stations always commence from 10.30 a.m. (for an 11.00 a.m. start) until 5.00p.m. Location was shown on the map in the March 2007 Journal. There is free coffee and biscuits available on arrival.

Forthcoming meetings are –

**12 – 14 April 2013      Society weekend, Jersey**

**8 June 2013              Society A.G.M. & Members displays**

**(Please NOTE: A NEW REVISED DATE for A.G.M. meeting)**

- 28 September 2013**      **Members General Displays** – where covers /items are postmarked with a date ending in a ‘3’, such as 1903.
- 14 December 2013**      **Social Philately – Morning:** - Members displays  
**Afternoon:** ‘Scott of The Antarctic’ T Cornford

### **IMPORTANT NOTICE ~ CHANGE OF DATE OF 2013 A.G.M.**

The Secretary wishes to inform the Membership that the date of this year’s AGM meeting has been changed. Please NOTE that the new date for the 2013 AGM will be **Saturday June 8<sup>th</sup>**. Please amend your diaries.

### **C.I.S.S. MEETING, LONDON, Saturday 17th November, 2012.**

The meeting began with an invited display on Social Philately. The Guest speaker was **Tony Bosworth FRPSL** who gave a 180 sheet display on the Berlin Olympics which proved to be a very fascinating story.

The afternoon began with a 50 lot room only auction. There was some spirited bidding with only 5 lots remaining unsold. This was followed by 5 displays.

**Mike Thompson** displayed a selection of Herm and Jethou stamps.

**Bob Macdonald** showed his latest acquisitions from the Occupation period – a scarce radio message card and a Jersey 1943 registered cover with an unusual registration handstamp

**Jon Aitchison** presented a social philately display, the subject of which was Guernsey Bus Services.

**Mark Bailey** displayed a large variety of Chausey cachets.

**Gerald Marriner** completed the short displays with his recent acquisitions on the subject of Jersey hotels. This included a scarce 1898 advertising cover from the Hotel de Paris, Jersey addressed to France. This later became known as the Mercantile Hotel. A photograph was shown of the Mercantile Hotel from 1907. Gerald concluded his display with a 1938 registered cover from Barcelona to the Royal Bank of Scotland in London. This was at the time of the Spanish Civil War and the item was opened and censored in Barcelona. The addressee had gone on holiday and the cover was re- routed to the Grouville Hall Hotel in Jersey. On arrival, the cover had received a Grouville arrival datestamp.

**Gerald Marriner FRPSL**

## November 2012 AUCTION - Some Realisations

LOT	Description	Reserve	Realisation
24	Jersey – 1817 Entire with Jersey Scroll	£50	£90
33	Sark – 1913 Parcel Post Label	£20	£200
76	Occupation 1941 cover – France/ Guernsey	£60	£85
117	Guernsey – ½d Imprint block -1st printing	£25	£60
118	Guernsey - ½d Imprint block – 3rd printing	£25	£60
129	Guernsey – 1944 Fortress Mail cover	£350	£350
130	Occupation – Radio Message card	£450	£450
131	Sark 1942 German Permit	£50	£95
132	Internee – 1943 – Compiègne to SARK	£400	£525
167	Jersey – 1943 Reg advertg cvr (Cheapside)	£25	£75
172	Eire to Jersey – Nov 1940 censored cover	£250	£400
193	French Red Cross Window envelope	£80	£85
200	Guernsey 1969 5d booklet stamp – red shift	£50	£75
201	Guernsey 1969 5d booklet stamp – no gold	£100	£225
217	Alderney 1947 cvr HMS Alderney cachet	£40	£60
271	Jersey – LL postcard – LL12 used	£45	£65
313	Jersey – Allix Card No 27 – Theatre	£20	£33
346	Guernsey –LL postcard LL164 Moulin Huet	£40	£55
352	Jersey – LL postcard No210 printed in plum	£25	£55
369	Sark – LL postcard No 39 – The Avenue	£20	£36
371	Sark – LL postcard no 43	£30	£120
376	Herm – 1959 1d green Map stamp (Marginal strip of 3- Imperf. between)	£40	£75
383	Herm – 1953 Coronation overprints (Imperf set in marginal pairs)	£200	£375
412	Herm – 1959 Map & Boats set -8 Doubles (Perforated Proof pair in trial colours)	£30	£65

## Jersey April Weekend meeting – Thursday 11<sup>th</sup> April

Mark Bailey is organising a three hour cruise to Les Minquiers in a fast rigid inflatable boat departing St Helier at 2.00pm and returning at 5.00pm. This boat can take 12 passengers, the cost will be approx. £39 per person and will include a 20-30 minute stop on one of the Islands to see fisherman's huts, cottages and wildlife. Members interested in this trip should contact Mark Bailey on tel: 0118 973 6079 or by email at [mark.bailey@hotmail.com](mailto:mark.bailey@hotmail.com) for full details.

## Saturday Provisional Programme

Morning - Bourse & 100 lot room only auction

(Note the usual large postal only Auction will be held in late April)

**Afternoon** – FREE, BUT an option is John Triggs organising a Regional Meeting of the Royal Philatelic Society London from 1.30pm until 5.00pm during the afternoon. CISS members who are not members of, but potential new members of, the Royal, may also attend as guests, but should inform John Triggs beforehand by telephone 01481 725847 or by email at [jtriggs@cwgsy.net](mailto:jtriggs@cwgsy.net)

## An 1840 Mulready envelope to Jersey



This rare illustrated envelope, a caricaturised version of the original Mulready design, was posted in London on the 12<sup>th</sup> July 1840 to Jersey and bears a plate 3 Penny Black adhesive with the corner letters 'LG'. The envelope also bears a red Maltese Cross cancellation in the original red ink in addition to a red London transit datestamp. It was sold privately by Stanley Gibbons in London for £12,500.



## Forged enhancements to German Occupation envelopes.



Members are again warned about further extraordinary covers appearing on ebay and offered by sellers from Guernsey. These are pretty, but that is all



that can be said as the added stamps and cachets have been applied later to

genuine original Red Cross envelopes and ordinary envelopes used during the German Occupation of the Island. The defacing of these envelopes makes them quite worthless and they have no part to play in the story of the postal affairs of the German Occupation of the Channel Islands.

**Do not waste your money on purchasing these fabricated items.**



### **New Life Members**

We are pleased to announce the achievement of Life Membership awarded to: 1479 N. H. Nelson, Wilts; 1480 Roger Cichorz, U.S.A.; 1485 Dr Mark Fox, Kent; 1491 Roger Jones, Cornwall.

## An unrecorded Jersey registration handstamp

Our member Bob MacDonald recently saw this cover at a stamp fair offered by a German dealer. The Registration mark was unfamiliar to him, but is it genuine or another example of a bogus mark?



The back is plain and the flap sealed and not opened. Having referred this to several of us, the considered conclusion is that this is a manufactured handstamp probably of recent origin!

Considerations supporting this view are:-

- ..The first such example seen after 69 years, either here or abroad.
- ..Registration reference books do not record a similar label or handstamp.
- ..This is a handstamp and not a large sheet label. The large sheet labels always had a number either below or above the **R** in a small box.
- ..The design of the **R** is clever as it is very similar to the **R** used in large sheet labels in Great Britain during the wartime period.
- ..There is no obvious evidence of registration viz no crossed blue lines or cancel on the back over the envelope flap required under PO Regulations.
- ..The writing in the box suggests *Jarsey* rather than *Jersey*.
- ..We know of the temporary registration marks used with the prefix **A**, **B** or **C** before numbers from 1943, so why should this boxed handstamp have been made and used?

Reference to Michael Wieneke in Germany has confirmed that this is the first example he has seen and he regards it as bogus too.

Has any member another example of this handstamp or ever seen one?

### News of Members

Congratulations to **Jon Aitchison, FRPSL**, recently appointed as Assistant Honorary Secretary at the Royal Philatelic Society London, who has now been elected as a Fellow of the Society at the Council meeting on 22 November 2012.



Congratulations also to **Phil Kenton, FRPSL** for the award of a Large Silver at Autumn Stampex for his postal history entry *The Passage and Acceleration of GB mail*.

### Members Wants

New Swedish member specializing in **Herm Island** is searching for commercially used covers and postcards. Also any genuine use of the higher value stamps. Wants List available. Can you help? If so, please send an email to Bo Olsson at [cfx987z@tninet.se](mailto:cfx987z@tninet.se) or advise the Editor

### Brecqhou Island Postal Affairs

Our member Simon Coombe of Guernsey has written on various topics with his experience as a former senior member of the Guernsey Postal Administration and in particular with regard to the carriage labels of this small Island. Prior to the Bailiwick's postal independence there was much debate over the then existence (in particular Herm's) of such labels and after much consideration all were rendered illegal by the Post Office (Guernsey) Law of 1969 and confirmed by the 2001 replacement. In respect to the more recent Brecqhou examples the Law Officers 'batted' the matter across to the Post Office and/or the Office of Utility Regulation. The Guernsey Post Office justified them on the basis that "a normal postal service is not provided to Brecqhou by Guernsey Post Ltd" and the labels are thus "considered not to contravene the provisions of the law".

Simon recently contacted Chris Le Tissier who is involved with the production of the labels with a view to providing photos of the posting box and telephone box and both are kindly shown here by Chris who writes that the post box is situated at the entrance to the staff village; mail is posted here for onward shipping to Guernsey by boat and to the U.K. by helicopter.



**Copyright Brecqhou Island**



**Copyright Brecqhou Island**

The old telephone box is situated outside the 'Dog & Duck Pub' on the Island.

Featured below is the £2 Christmas 2006 carriage label depicting the postbox. The artwork was by Wendy Bramall and used on both the label and that year's Christmas card.

Acknowledgement is given to Chris Le Tissier and Brecqhou Development Ltd.





## ETTORE ARCELLI – AN ITALIAN IN THE WRONG PLACE AT THE WRONG TIME by Ron Brown.

(Continued from December Journal 2012 Volume 31 No.4.)



Fig. 15.

Figure 15 above is a letter dated 1 July 1941, some two months later than the previous example, which had then been opened and censored by the Italians. The letter had been opened on three sides and sealed with Italian censor tapes. On the reverse is a violet circular censor mark '93' over 'II' in a circle which was applied in Bologna. 'A/d', 'R' and '2' in circles are all Munich markings. The letter does not appear to have been re-opened for censorship by the Germans.

In July 1941 the mail service to and from the Channel Islands was officially established, but it was still a new service and because of that the Feldpost in Paris again added '405' (may be on the top letter of a bundle addressed to the Channel Islands) to ensure that all arrived by the Feldpost service at the correct office in St. Lo.

The Kenn-Nummer does not appear on any subsequent letters as the routing had become 'standard'.



Fig. 16 with obverse below.

Figure 16 above is a cover addressed to the Continental Hotel and date stamped 24 July 1941. It has been censored by the Italians at Bologna







Registration Certificate No. J24495

Issued at Jersey  
 on 13th August 1941

Name (Surname first in Roman Capitals)  
ARCELLI, Margorie Ellen  
mée Whitley

Left Thumb Print  
 (if unable to sign name  
 in English Characters)

PHOTOGRAPH

Signature of Holder M. S. Arcelli

Nationality Italian by marriage  
 Born on 7/10/1917 in Montreal Canada  
 Previous Nationality (if any) British

Profession or Occupation Household duties  
 Single or Married married  
 Address of Residence 1, Diadem Villas,  
 Parade Rd., St. Helier, Jersey  
 Arrived in United Kingdom on.....  
 Address of last Residence outside U.K.....  
 Government Service.....

Passport or other papers as to Nationality and Identity.  
Marriage Certificate no. 282  
issued at St. Helier, Jersey,  
on 28/1941.

Fig. 18.



Fig. 19.

Figure 19 is a cover, addressed to the Continental Hotel Jersey, dated 5 August 1941, some two weeks later than the previous letter and three days after Ettore's marriage. The 1 lira stamp is missing. This letter has not now been censored by the Italians, but censored by the Germans and sealed with German censor tape code 'd' (Munich). The other markings were also applied in Munich. The violet '2' in a circle is a style of cachet recorded by Landsmann in use in Munich from November 1940 to June 1944 with numbers up to 86. The tape is cancelled with a small circular spread eagle cachet. The boxed red numerals were the personal numbers of the German censors.



Fig. 20.

Figure 20 is a letter dated 27 September 1941. The letter has not been censored by the Italians, but has several German censor cachets applied in Munich. The plain censor tape has been applied over the Munich censor's boxed cachet and therefore has been applied after the letter left Munich. The letter may have been opened for censorship en route or on its arrival in Jersey and the plain censor tape is known to have been used in both Germany and Jersey.

The previous letters showed that they were generally opened for censorship by either the Italians or Germans, but not by both. The following two letters dated December 1941 have been opened and censored by both the Italians and Germans.

The Italian censor tapes are horizontal and the German censor tapes were applied to the end of the covers showing that the Germans did not disturb the Italian censor tapes.



**Fig. 21.**

Figure 21 above is a letter dated 5 December 1941 first censored by the Italians at Bologna with a censor tape on the reverse. The letter was then censored by the Germans at Munich and a tape applied to the left hand side. Both the letter and envelope on the obverse have the circular Italian censor cachet '309/ II' in violet - see the next page.





Fig 21a. Obverse of the letter on the previous page showing censor tape and cachet.



Fig. 22.

Figure 22 is a letter from Milan, dated 15 December 1941 and postmarked 22 December 1941, addressed to Ettore at the Grand Hotel. Ettore had left that Hotel some 18 months earlier and at this time was working at the Continental Hotel. The letter was opened for censorship in both Italy and Germany at Bologna and Munich respectively.

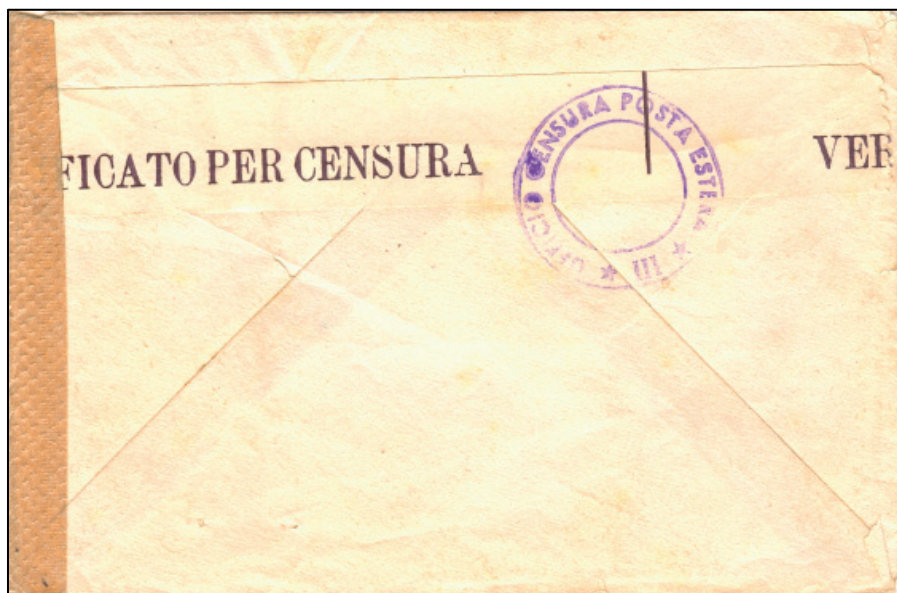
The letter has been cancelled with a slogan postmark **‘VISITATE L’ITALIA’** (Visit Italy) an inappropriate slogan in 1941, but an invitation that was taken up by the Allied Forces who landed on Sicily in 1943.



Fig. 23.

Figure 23 is an entire letter addressed to the Continental Hotel written on 23 March 1942 and datestamped 24 March.

Firstly the letter was censored by the Italians at Milan who applied a censor tape to the reverse and then by the Germans at Munich [Code d] to the left hand edge. See Figure 23a on the next page.



**Fig. 23a.** Obverse of letter on previous page showing re-sealing censor tapes.



**Fig. 24.**



Figure 24 above is a letter postmarked 10 September 1942 which was opened and censored by the Italians in Bologna where the censor cachet '67 over II' was applied to both the letter and envelope – see the obverse below showing the Italian censor tape, cachets and postmarks.



Fig. 24a.

The letter does not appear to have been re-opened by the Germans, but on the front a German machine ribbon cancellation with 'A/d' for Munich has been applied, signifying passed which is seldom seen on Channel Islands mails.



This was the last letter received by Ettore before his return to Italy.

Following the German Occupation all single Italian males were sent home to Italy for military service. They were followed by four Italians who had British wives. On their way home the four Italians had medical examinations and a 'friendly' French doctor pronounced three out of the four (including Ettore) as unfit for military service.

The four British wives did not accompany their husbands but, without notice, on the 8 October 1942 were ordered to make their way to the pier at St Helier harbour where at 4pm they boarded a barge and were initially given a private cabin from which they were evicted by a German officer. The barge joined a convoy heading for St Malo, but did not arrive until 9am the next morning. They sailed at the tail end of a cyclone which made for a very uncomfortable crossing and were given life jackets, but did not put them on as they considered that if the barge sank they would drown anyway.

On arrival in St Malo they were given a breakfast of sausage and black pudding and sent on to Rennes by train and then to Nantes by motor transport. Here they remained for about one month before being sent on to Italy to join their husbands. The four women were housed in a hotel and received one meal per day which was provided in the Soldatenheim (German NAAFI) where they ate in the Officer's mess on the first floor. They were unable to purchase any other food as they did not have any ration books.

One night they heard considerable noise on the roof and next day from the station opposite they saw that anti aircraft guns had been positioned on the roof. (This information was kindly provided by the Late Marjorie Arcelli on 27 October 2011).

2 ENDORSEMENTS AND REMARKS.	
<p></p> <p><i>Reported leaving for France.</i></p> <p></p>	<p><b>AVIS IMPORTANT.</b></p> <p>Dans le cas de changement de résidence, vous êtes tenu d'en donner information au Bureau des Etrangers, proche le Pont-à-Bascule de St. Hélier, et ce dans les quarante-huit heures de ce changement.</p> <p>Tout étranger négligeant de donner cette information se rendra passible de poursuites judiciaires et sera sujet à l'amende ou à un term d'emprisonnement.</p>



Above are pages from Marjorie's identification document.

On their return to Italy Ettore and Marjorie opened a grocers/greengrocers shop in Cremona where they remained until returning permanently to Jersey after the Liberation. During their four years in Italy they received letters from Jersey and tore the stamps off the envelopes and gave them to a boy for his collection! No other letters from or to the Arcelli's to and from Jersey survive.

4	5
ENDORSEMENTS AND REMARKS.	ENDORSEMENTS AND REMARKS.
<p><i>Permitted to land in Jersey on 20<sup>th</sup> October, 1946, on condition that the holder does not remain in Jersey longer than three months.</i></p> <p><i>L. L. H. Ching</i> <i>D.O.B.</i></p> <p><i>74 St. Saviours Rd., St. Helier.</i></p> <p><i>C.I. 303033</i> <i>90.458099</i></p> <p>ALIENS OFFICE 21 OCT 1946 JERSEY</p> <p>74 St. Saviours Rd., St. Helier.</p> <p>20 AUG 1948 JERSEY</p> <p><i>gab.</i></p>	

On his return to Jersey Ettore resumed employment in the hotel industry and at the time of his retirement he was the manager of the Beaufort Hotel in Green Street (now The Club and Spa Hotel).

Ettore passed away on 13 June 1981 and was survived by his charming widow Marjorie whom I met at her home on 27 October 2011.

On 28 October Marjorie was taken ill and went into a nursing home where she died on 5 November. I am fortunate to have met Marjorie before this story died with her, but I wish I had learnt more about her journey to Italy and return to Jersey.

*I am indebted to Graham Mark of the Civil Censorship Study Group, Michael Wieneke,, John Hailey and Michael Ginns MBE for so much of the information contained in this article and to Patrick Robbé for the material and the introduction to the Late Marjorie Arcelli.*

## Summary of letters and postcards in the Ettore Arcelli correspondence 16 March 1940 to 10 September 1942.

From	Date	Address	Censors	Notes
Milan	27.09.40			
Milan	15.03.40	Jersey, C.I. Inghilterra	UK PC66 label 1192	Fig 3
Pavia	19.04.40	Jersey, C.I. Inghilterra	UK Interim label 2320	Fig 6
Pavia	16.05.40	Jersey, C.I. Inghilterra	Jersey C.I. label	Fig 7
Pavia	07.06.40	Jersey, C.I. Inghilterra	UK octagonal lozenge	Fig 8
Milan	27.09.40	Jersey, C.I. Germania	Munich, opened. Censor tape	Fig 12
Pavia	05.04.41	Jersey, C.I. Germania	Munich, passed. Jersey opened FK 515. 1c	Fig 13
Pavia	26.04.41	Jersey, C.I. Germania	Munich, passed unopened	Fig 14
Pavia	01.07.41	Jersey, C.I. Territorio occupato Tedesco	Bologna opened 93/II	Fig 15
Pavia	24.07.41	Jersey, C.I. Territorio occupato Tedesco	Bologna opened 4/II. 126/II Censor tapes Munich passed unopened	Fig 16
Pavia	05.08.41	Jersey, C.I. Territorio occupato Tedesco	Munich, opened censor tape. No Italian markings	Fig 19
Pavia	27.09.41	Jersey, C.I. Kanal Insel, Territorio occupato Tedesco	Munich, passed unopened. Plain censor tape after Munich	Fig 20
Pavia	05.12.41	Jersey, Kanal Insel, Territorio occupato Tedesco	Bologna, opened 309/II, censor tape Munich, opened, plain censor tape.	Fig 21
Milan	22.12.41	Jersey, Kanal Insel, Territorio occupato Tedesco	Bologna, opened, censor tape. Munich, opened, censor tape	Fig 22
Pavia	24.03.42	Jersey, C.I. Kanal Insel, Territorio Occupato Tedesco	Milan, opened, censor tape. Munich, opened, censor tape	Fig 23
Pavia	10.09.42	Jersey, C.I. Kanal Insel, Territorio occupato Tedesco	Bologna, opened, censor tape. Munich, unopened, ribbon cancellation.	

## **CIRCULATING EXCHANGE PACKETS**

**New material that you may wish to sell is  
urgently needed for the Packets.**

**In particular your spare or duplicate  
Occupation and stamp related material.  
Send it priced for circulation to our Packet Secretary:**

**John Triggs,  
'Sunnyside', La Gibauderie,  
St Peter Port, Guernsey, GY1 1XF.  
Tel. 01481 725847. Email. [Jtriggs@cwgsy.net](mailto:Jtriggs@cwgsy.net)**

## **DISPOSAL OF YOUR CHANNEL ISLANDS' COLLECTIONS**

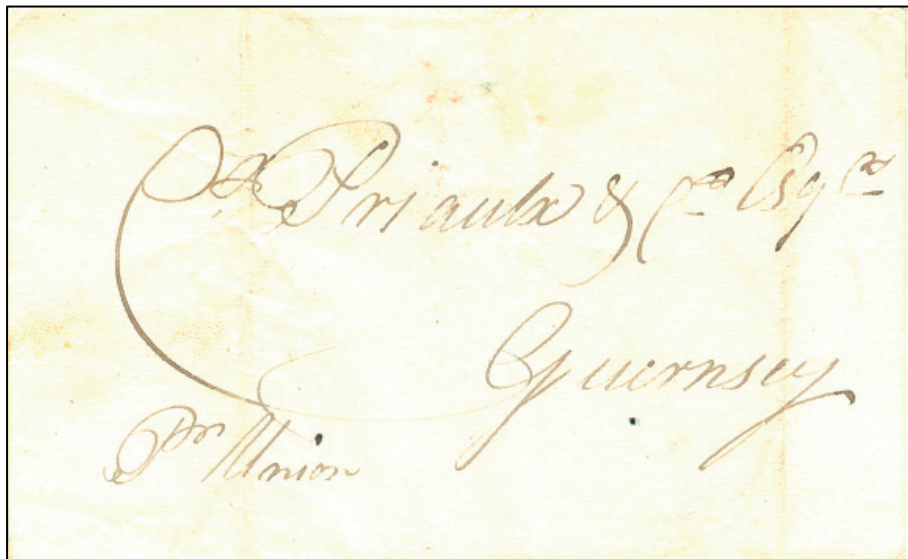
If you wish your collection to be sold in the event of a change of interest or death, the Society may be able to help in arranging disposal within the C.I.S.S. either by private treaty or through the Society's Auction and/or Packets.

The benefits can be:

1. Best realisation of value to the owner or dependents at least cost.
2. Opportunity for other members to obtain items at reasonable prices.
3. Society income enhanced. Commission is charged at only 5% on private treaty transactions, 10% on sale by auction or packet and the usual 2% insurance fee based on the value of the items handled. Several collections have been very successfully sold in this way in recent years to the benefit of the owners.

## 1803 Wrapper from St Croix, Virgin Islands to Guernsey.

by David Gurney FRPSL



This interesting wrapper purchased recently at Philatex was dispatched from St Croix in the Virgin Islands on the 29<sup>th</sup> May 1803 to Carteret Priaulx & Co Esq in Guernsey endorsed *Per Union*. The actual letter has been identified in the archives of the Priaulx Library in Guernsey and is shown below.

The large 'C', which I believe is abbreviated for Carteret, is flamboyant in style, but not unusual for the period concerned. It is also endorsed *Pd* just to the right of *Esq*. The *Pd* endorsement suggests the post was paid yet there is no indication that this letter has been put in the post, but rather perhaps carried privately.

The inside of this wrapper has been endorsed in pencil by the Late J.M.Y .Trotter, when Curator of the Priaulx Library, *P. BIENVENU /SOUTHAMPTON/EX VIRGIN IS./ST CROIX*.

This small box shows a part of the reverse side of the wrapper endorsed with the dispatch and receipt details.



Questions that arise are –

1. Was this letter carried in the post or privately, even on the ship itself?
2. Was the sender, Paul Bienvenu, one and the same person from the partnership of Priaulx & Bienvenu(e) in Southampton, recorded in business between 1796 and 1829?
3. Did the Late J.M.Y. Trotter assume in his pencil note that this was the case although there is no evidence that the letter has passed via Southampton.

The letter itself is most interesting providing a flavour of the time, but it is unclear quite why the ship should put to sea for a few days unless there was anticipated unrest ashore with the slave workers who would have been fully involved in harbour loading etc.

Reference to modern sources suggests a *Punchon* is an old English unit of wine cask, holding about 318 litres.

Further reference shows Puncheon rum to be a high proof heavy-type rum, a favourite with seafarers and estate workers traditionally providing comfort and warmth against the elements. From the early days of the plantations, this rum has been much sought after for blending in Europe.

A search made of the correspondence surrounding this letter in a visit to the Priaulx Library in September last to identify any other similar letters between say 1802 and 1804 unfortunately failed to find anything substantive.

S<sup>r</sup> Louis May 29<sup>th</sup> 1863

Gentlemen,

I take the opportunity of acquainting you  
of my being still at this port and am sorry  
to say so, but cannot help it, the sun before  
yesterday began to load this day have twenty  
nine <sup>Punichons</sup> on board. Mr Rogers assures me  
to be Ready to sail by the 12<sup>th</sup> of June —  
Capt<sup>r</sup> Tardiff calls this way two days ago  
& was advised by Mr Rogers to go to sea for  
a few days for fear Rum should rise  
Capt<sup>r</sup> Tardiff wants about 140 Punichons  
which he cannot get till I am loaded. —  
I expect to be home nearly as soon as the  
letter therefore I conclude & remain  
With Respect Your Obedt<sup>h</sup> Serv<sup>t</sup>  
Paul Bienville.



# Channel Island Postal BidSales

Gategny Chambers, 1st Floor, Bosq Lane, St. Peter Port, Guernsey, GY1 2LP.  
Tel: 01481 727353/Fax 01481 725981 Email: [dtomlin@cipostalbids.co.uk](mailto:dtomlin@cipostalbids.co.uk)

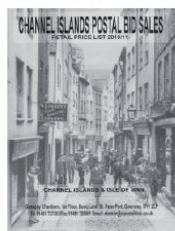
Postal Auction catalogues are produced 5 times a year and include a wide variety of Postal History and stamp issues. Including specialised listings.



We offer a wide range of Channel Islands and Isle of Man stamps in our Retail Catalogue.

Please visit our Website:

<https://www.cipostalbids.com> for all these and much more including Special Offers of rare and scarce items. Catalogue available by post on request.



**A set of 8 different postcards showing some Sub-Post offices of Guernsey have been produced specially for the Society's 60<sup>th</sup> Anniversary weekend meeting in Guernsey. The cards have the 'C.I.S.S. 60<sup>th</sup> Anniversary' inscription on the reverse.**

**This is a first for the Society and will make an attractive addition to your collection.**

**The set of 8 unused postcards are priced at £3 plus postage and are available from Richard Flemming, 64, Falconers Green, Burbage, Hinckley LE10 2SX.**



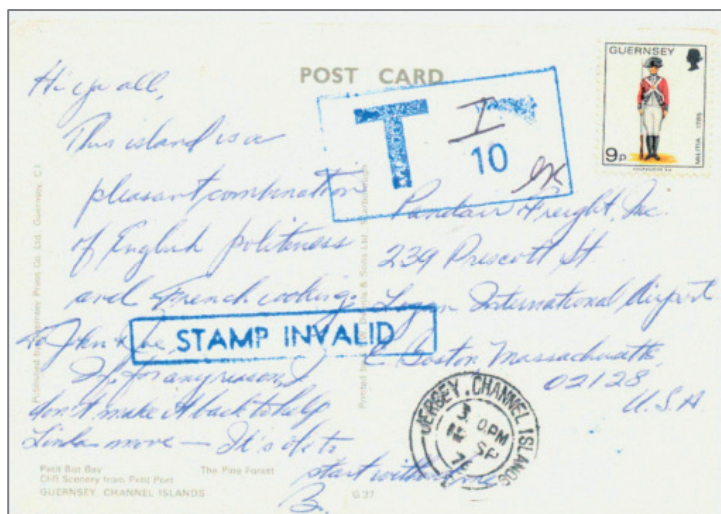
## JERSEY Modern Postage Due Markings

by Gerald Marriner FRPSL

Whilst at a recent Philatelic Conference I was shown some unusual Jersey postage due covers which I illustrate below.

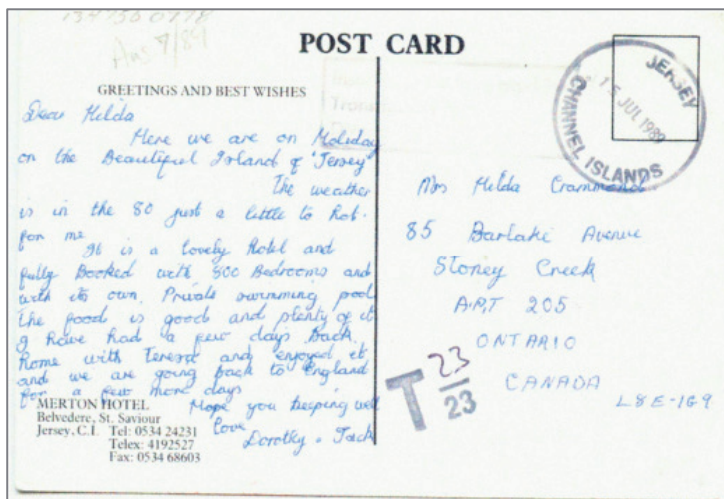


This cover was posted to Malta in 1977. It was underpaid – only paying the local Jersey rate. A framed T – handstamp was applied in violet. Both the numerator and denominator in this fraction were added in manuscript – 5 above 10 respectively. Note the Malta postage dues applied on arrival. I have not seen this marking before.





The second item illustrates an example of the seldom seen Jersey **T 10** handstamp. This shows the usage of a Guernsey stamp on a 1976 card from Jersey to America. The letter rate to America was 10p at this time. Guernsey stamps are not valid for postage in Jersey. Hence this card was surcharged in Jersey. The Z was inserted in manuscript.



The third item above shows an unpaid postcard from Jersey to Canada posted in 1989. The international letter rate was then 23 pence. This shows an example of the seldom seen Jersey **T 23** handstamp in grey black. The denominator in this fraction is also 23 because no postage has been paid. No postage due stamps were affixed on arrival in Canada.

I acknowledge with thanks Ken Snelson of Canada who supplied me with this information.

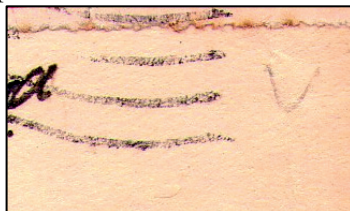
## A very unusual Occupation advertising cover

by Keith Raymond

A year ago I saw in auction another similar envelope to one I already had and not in quite as good a condition, but as it was an attractive cover I liked I thus decided to place a low bid and was successful.



When I examined this cover more closely I spotted a weak 'V' which I do not think has been added in pencil although I do not wish to apply a rubber eraser to the cover as a test. It is located at the end of the wavy line part of the machine cancel as indicated. Could this be a part of the passive resistance exercised by some Islanders during the German Occupation?



The use of the 'V' sign was quite apparent in the earlier part of the German Occupation until the German Authorities decided to take action and ultimately it became dangerous to risk initiating such a practice. From the depths of my memory I can recall the mention of the use of a 'V' for Victory in the format of a Channel Island machine cancel, hidden of course, but enquiries have not revealed any knowledge of such until I acquired this envelope.

Can any member expand on this and report a similar example?

## **C.I.S.S. PUBLICATIONS**

Our current stock of merchandise at  
reasonable prices.

However postage is extra and will be invoiced.

**Write to:** C.I.S.S. Book Sales at 64, Falconers Green, Burbage.  
Hinckley. Leics. LE10 2SX or Email – [rflemming@talktalk.net](mailto:rflemming@talktalk.net)

- |  |        |
|--|--------|
| 1. The Postal History of the Guernsey Sub-Post Offices (265pp)                                       | £10.00 |
| 2. Red Cross Postal Message Scheme with the Channel Islands<br>during the Occupation 1940-45 (389pp) | £8.00  |
| 3. Islanders Deported Part 1 (226pp) ex Library copies   | £10.00 |
| 4. Islanders Deported Part 11 (246pp)  | £4.00  |
| 5. A Study/Check List of Jersey Definitives/Booklet Panes 1969-1997                                  | £3.00  |
| 6. The Postal History of the Jersey Sub-Post Offices (376pp)   | £15.00 |

**(This book is reduced from £27 to £15 as staples are slightly rusting)**

### **NEW:-**

- |  |        |
|--|--------|
| 7. Jersey & Guernsey Slogan Postmarks of the 20th Century (85pp) | £7.50  |
| 8. Boat Services to the Smaller Channel Islands (2nd edition)    | £20.00 |

Also available:-

**Binders** for 'Les Iles Normandes' holding 12 issues @ £4.50 each or  
three for £12.50 plus postage.

**Society Ties:** In blue or maroon with CISS motif @ £8.00 each plus postage.

Payment may be made by Visa/Access/Mastercard. A service charge of 5% is made  
in accordance with the Credit Card (Prices Discrimination) Order.

Please quote your card number, expiry date and card settlement address.

# WARDROP & COMPANY LIMITED

*Philatelic Insurance Specialists*

**The insurance for the serious collector providing  
peace of mind at surprisingly low cost**

**What is covered** - Stamps, covers, envelopes, postcards, albums, philatelic literature, stamp boxes, and other articles of philatelic or postal history interest

**Insurance against** –All risks of physical loss or damage to property excluding wear, tear, gradual deterioration, moth, vermin, and damage or deterioration of any article directly caused while being worked upon or undergoing any process

**Scope of cover** – Anywhere UK (subject to prior advice of transits or locations other than the main dwelling for sums over £15,000) including postal or accompanied sendings

**Basis of valuation** – Market value

<b>Cost</b> –Anywhere UK	£3.75 reducing to £3.00 per £1,000 for higher sums
Normally Bank	£2.50 per £1,000 (30 days withdrawal any one year)
Bank only	£1.25 per £1,000

For a personal quotation and prospectus write to us at the address below, telephone **01376 563764**, email [john@wardrop.co.uk](mailto:john@wardrop.co.uk) or visit our website [www.wardrop.co.uk](http://www.wardrop.co.uk) for more information including lots of links to other philatelic sites and an online proposal form.

**Wardrop & Co Ltd  
PO Box 772, Coggeshall  
COLCHESTER CO6 1UW**

**Authorised and regulated by the Financial Services Authority**

## **FORTHCOMING NEW STAMP ISSUES – 2013.**

### **GUERNSEY POST**

<b>8th May</b>	<b>Europa: The Postman's Van</b>	
	Set of 6 stamps	£3.46
	First Day Cover	£4.66
	Presentation Pack	£4.36
	Sheets of 10	£34.60
	Souvenir Sheet	£3.46
	First Day Cover	£4.66
	Souvenir Sheet and Presentation Insert	£3.66
	(This set of stamps will be Non Value Indicators and Stamp Value subject to change)	

<b>29th May</b>	<b>Herm Island</b>	
	Set of 6 stamps	£3.46
	First Day Cover	£4.66
	Presentation Pack	£4.36
	Sheets of 10	£34.60

### **ALDERNEY**

<b>29th May</b>	<b>60th Anniversary of the Queen's Coronation</b>	
	Set of 6 stamps	£3.46
	First Day Cover	£4.66
	Presentation Pack	£4.36
	Sheets of 10	£34.60
	Prestige Booklet	£12.36

### **JERSEY POST**

<b>19th March</b>	<b>Europa 2013 – Postal vehicles</b>	
	Set of 4 stamps	£2.40
	First Day Cover	£3.50
	Presentation Pack	£3.50

<b>2nd April</b>	<b>Buses III – The JMT</b>	
	Set of 6 stamps	£3.96
	First Day Cover	£5.06
	Presentation Pack	£5.06
<b>11th April</b>	<b>Corbiere – Grand National Winner 1983</b>	
	Set of 4 stamps	£2.63
	First Day Cover	£3.73
	Presentation Pack	£3.73
<b>8th May</b>	<b>International Red Cross &amp; Red Crescent Movement</b>	
	6 stamps (NVIs)	£3.96
	Stamps First Day Cover	£5.06
	Stamps Presentation Pack	£5.06
	Miniature Sheet	£2.00
	First Day Cover	£3.10
	Presentation Pack	£3.10
<b>2nd June</b>	<b>The Coronation</b>	
	Se-tenant pair stamps	£4.00
	Stamps First Day Cover	£5.10
	Stamps Presentation Pack	£5.10
	Souvenir Miniature Sheet	£4.00
	First Day Cover	£5.10
	Presentation Pack	£5.10

Due to the loss of LVCR, Jersey Post now collects the appropriate rate of VAT on the various products at the point of sale and pre-pays HMRC on all orders entering the UK.

Post & packing charges CI - £1.85, UK - £1.94 (incl. VAT), Europe - £ 2.00 and the Rest of the World - £3.00

Note: This is the basic charge only.

Also, please be aware that from 2013, Jersey Post will be charging 5% GST to Jersey Customers on CTO stamps (and complete CTO sheets) only.

## **CHANNEL ISLANDS**

Postal History \* Occupation \* Revenues  
Herm \* Alderney \* Sark \* Jethou \* Lihou  
Independent \* Errors and Varieties

Postcards \* Ephemera from all periods  
**ALL TO BE FOUND IN MY REGULAR  
POSTAL AUCTIONS AND PRICE LISTS**

Send for the latest catalogue today (free of charge)  
and see for yourself!

## **WINDSOR STAMPS**

**1, Sausmarez Street, St. Peter Port,  
Guernsey, GY1 2PT. C.I.  
Tel: (01481) 725209**

\*\*\*\*\*

**VISITING GUERNSEY?**  
**THEN VISIT THE WINDSOR STAMPS**  
**“COLLECTORS CENTRE”**

**1, Sausmarez Street, St. Peter Port, GY1 2PT**  
**Tel: (01481) 725209**

*Stamps and Postal History \* Postcards*  
*Coins and Banknotes \* Cigarette Cards*  
*Antique Prints \* Engravings \* Maps, etc., etc.*

**WELL WORTH A VISIT!**

## **WHEN WAS THE LAST TIME**

you discussed your Home Insurances, to include your Channel Island Collection, with an Insurer who understands?

**TALK TO DAVID MORRIS** who knows about  
both Home Insurances and collecting Channel Island stamps,  
and ephemera

**DAVID J MORRIS ACII  
CHARTERED INSURANCE BROKER**

**J L MORRIS (INSURANCE BROKERS) LIMITED  
MANOR HOUSE, 1 MACAULAY ROAD  
BROADSTONE, BH18 8AS**

**TEL: 01202 642840**

**[www.jlmorris.co.uk](http://www.jlmorris.co.uk)**

**[enquiries@jlmorris.co.uk](mailto:enquiries@jlmorris.co.uk)**

J L Morris (Insurance Brokers) Limited is authorised and regulated by the Financial Services Authority