

**CHANNEL ISLANDS
SPECIALISTS' SOCIETY**

September 2025

Volume 44 No.3

THE CHANNEL ISLANDS SPECIALISTS' SOCIETY

Founded in 1950 for the study of the stamps and postal history of the Channel Islands

OFFICERS

President: David Laurillard
01264 393820 president@ciss.uk

Chairman: David Winnie FRPSL
01225 790394 chairman@ciss.uk

Secretary: Richard Flemming
64 Falconers Green, Burbage, Hinckley, Leicestershire, LE10 2SX
01455 613826 secretary@ciss.uk

Treasurer: Bryan Elliston
07785 310213 treasurer@ciss.uk

Les Iles Normandes Editor: Nick Martin FRPSL
07703 766477 editor@ciss.uk

Packet Secretary: John Triggs FRPSL
01481 725847 packets@ciss.uk

Auctioneer: Nick Stuart
3 Dudley Road, Walton on Thames, Surrey, KT12 2JT
01932 229316 auctioneer@ciss.uk

Membership Matters: membership@ciss.uk

Advertising & Press Secretary: Steve Wells
01903 501415 press@ciss.uk

Competitions Secretary: Julian Bagwell
07966 961998 competitions@ciss.uk

Archivist (Ex Officio): Mark Bailey FRPSL
07415 630448 archivist@ciss.uk

CISS Website: www.ciss.uk

To contact a society officer please use the email address listed above.

Honorary Life Members

Michael Wieneke
David Gurney, FRPSL

LES ILES NORMANDES

CONTENTS

Editorial.....	2
Secretary's Clipboard	3
New Members	4
Forthcoming Meetings 2025	5
Regional Meeting at Market Harborough.....	5
Annual Competition Day – 21 February 2026	6
The Guernsey Double-oval and Crown Handstamp.....	7
A Cover to Jersey during the Franco-German War	8
La Rocque, Jersey – Type D Registration Label.....	9
New Acquisition – 1921 Havre-des-Pas Registered Letter	11
German Ultimatum for Jersey's Surrender in 1940	12
Switzerland to Jersey: Compulsory Re-registration on Re- direction	20
PSJ Clark.....	23
An Underpaid Cover from St Servan to Jersey, 1966	25
Last Day of the La Baissieres Sub-Office in Guernsey, 1966	27
Town Post Office, Guernsey.....	28
Isle of Sark issues its own Postage Stamps	31
Jethou's 1963 Europa issue	32

CONGRATULATIONS

Congratulations to Jon Aitchison for his Large Vermeil Medal for *Egypt postal stationery registered envelopes, letter sheets and registered letter sheets*, to Gerald Marriner on his award of a Large Vermeil for his display *The German Occupation of The Channel Islands - Disruption to the Mail Service 1940-1945*; and Brian Sole for a Large Vermeil for his publication *A Reminder of the British Greetings Telegram Service*. We were also pleased to receive a Silver Medal for Les Isles Normandes.

LES ILES NORMANDES

EDITORIAL

We are three-quarters of the way through our Anniversary Year, with just a few meetings and our Autumn auction to go.

Europhilex was generally felt to have been a success. The CISS held a friendly meeting at the exhibition, and we were delighted to meet three new members and a member, Tim O'Shea from the United States.

The Autumn Season starts for us with our meeting at the RPSL on Saturday 13 September. Our meetings are always friendly, and there is the opportunity to buy some lots from our small auction, as well as meeting other members and perhaps chatting over a beer at lunchtime. If you are within travelling distance of the city, please come along to the comfortable surroundings of the RPSL. The September meeting will be followed by our "Country" meeting at Market Harborough, which will hopefully be a convenient venue for members in the Midlands and further north to join us.

I hope that you have all had a good summer, mostly average weather notwithstanding, and have not deserted your collections altogether.

Best wishes,

Nick

MORE CONGRATULATIONS

Congratulations to Howard Hughes for his display *The Maltese Cross*, and Jon Aitchison and James Grimwood-Taylor, RDP, jointly with Bill Hedley for their display in the Court of Honour at Europhilex *Early Writing, Clay Tablets from 4,000 years ago*.

LES ILES NORMANDES

SECRETARY'S CLIPBOARD

Richard Flemming

By the time you read this, Summer will have come and gone, and we will start to notice the evenings drawing in. Can I thank those eighteen members who attended the 75th AGM at the RPSL in person, and the eight members who joined us via Zoom, including one member linking up from the USA. Thank you also to Mark Bailey for setting up the Zoom equipment for us.

I am pleased to report that all those committee members who had put their names forward for re-election were elected to serve for a further twelve months. A full copy of the Minutes of the 75th AGM are available to view on the Society's website at www.ciss.uk; click on [News](#). Please note that several of the committee members have now been serving on either the Executive or Full committee for several years, even decades, and we need some new blood for the future. If you fancy becoming a member of the CISS committee, and would like to 'shadow' a committee member to see what their role involves, then please contact me at secretary@ciss.uk.

Looking forward, the Society will be holding another Members' Day Meeting on Wednesday 15 October, this time at the Three Swans Hotel in Market Harborough. Hopefully many members will be able to attend. The event is free, but there is a three-course buffet lunch available at £25 per person. The booking form is available on the website [Society News Archives - Channel Islands Specialists' Society](#).

Due to the high costs to members and the Society, the planned Members' Weekend Meeting for April 2026 at Chester has now

LES ILES NORMANDES

been moved to Kenilworth, Warwickshire, of which further details of dates and costings will be available in due course.

As the evenings start to draw in, it is time to think of putting your competition entries together for the 2026 Members' Competition Day, on Saturday, 21 February 2026. Rules and entry forms will be available on the website. Remember, entries cannot be accepted on the day of the meeting. Please see Page 6 below.

NEW MEMBERS

We are very pleased to welcome the following who have joined the CISS recently and we were pleased to meet some of you at our summer meetings.

Martin Gill of Fakenham, Norfolk
Ravi Mahija of Bedford
David Street of Uxbridge, London
Robert Brunel of Kaufbeuren, Germany
Lee Quinn of Abbots Langley, Hertfordshire
Anthony Henderson of Caerphilly, Gwent
Albert Jackson, Wimborne, Dorset
Mark McShane, Wickford, Essex
Paul Wyer of Wissett, Norfolk
Stephen Smith of Peterborough, Cambridgeshire
Simon Adams of Poole, Dorset
Lorraine Ecuyer of St Pierre du Bois, Guernsey
Simon Golland of St Peters, Guernsey
Deryck Hamon of Petworth, Sussex
Peter Friedmann of London
Dane Garrod of Abingdon, Oxfordshire
Dave Lee of Leighton Buzzard, Bedfordshire
Stewart Glasgow of Southampton

LES ILES NORMANDES

FORTHCOMING MEETINGS 2025

- 13 September 2025 Members' Meeting – Postcards. Includes a 50-lot auction.
- 15 October 2025 Regional Meeting at The Three Swans Market Harborough. (This is an additional meeting). Convenor: Gerald Marriner.
- 29 November 2025 Joint meeting with the Great Britain Philatelic Society (GBPS). Please note the change of programme. The venue is unchanged – The Royal Philatelic Society London, Abchurch Lane EC4N 7BW. No room auction.

Unless stated otherwise, all meetings are held at the Royal Philatelic Society London, 15 Abchurch Lane, London EC4N 7BW with meetings commencing at 11.00am. Tea and coffee is available from 10.30am in the Members' Lounge.

Please see the Society's website at www.ciss.uk for dates of news and other events.

REGIONAL MEETING AT MARKET HARBOROUGH

Wednesday 15 October 2025

The Three Swans Hotel, 21 High Street,
Market Harborough, Leicestershire, LE16 7NJ

Please contact the Convenor, Gerald Marriner, if you would like to display - gerald.marriner@gmail.com

The meeting is free. Buffet lunch £25 per head.

There is plenty of parking space.

LES ILES NORMANDES

ANNUAL COMPETITION DAY – 21 FEBRUARY 2026

Next year's Competition Day will be on Saturday 21 February 2026 at The Royal Philatelic Society London.

In line with last year, as many exhibits as possible will be available for viewing on the CISS website, as well as on the day at our meeting at the Royal. The rules can be found on our website on the [Competitions](#) page, where an entry form can also be found. Please note that all entries must be submitted in scan or photocopy form by the deadline date, Saturday 24 January 2026. Entries submitted after that date will not be considered.

Entry forms and scans of entries should be sent to the Competitions Secretary by Saturday 24 January 2026 at competitions@ciss.uk. Photocopies should be mailed to the Competitions Secretary at the address given on the entry form. UK based members are encouraged to bring their entries to the Royal on Competition Day to share them with other members.

Please feel free to contact me, the Competitions Secretary, at competitions@ciss.uk with any queries. Enquiries can be made by phone on 01865 378012

As always, we look forward to receiving your interesting and varied entries. The competition rules are easy to follow, and members often find that they can display previously written up material with relatively little amendment. I am happy to help members who may be new to competitions; feel free to contact me.

Julian Bagwell
Competitions Secretary
competitions@ciss.uk

LES ILES NORMANDES

THE GUERNSEY DOUBLE-OVAL AND CROWN HANDSTAMP

Richard Flemming

In 1799, the Ship Letter Office was established in London with the necessary Parliamentary enactment. The double oval and crown replaced the previous two-line handstamp. The Crown handstamp sent to Guernsey in 1802 had two periods of use, from 1802 to 1815, and again from 1844 to 1849. Because the ship letter charges were strenuously opposed by the islanders as they were seen as a levy on incoming mail from private ships, little mail was ever handed over to the Post Office. As a result of this, the double oval Guernsey ship letter handstamp lay idle for most of its life. Consequently, to date only five or six examples for the 1802 to 1815 period of use are known to exist. A few more are known from the 1844 to 1849 period.



The rare entire shown dated 30 December 1814 (first period of use) sent from Rotterdam to Guernsey and bears a Type 2 double-oval/Crown/GUERNSEY handstamp applied at the Guernsey post office. Notably, the letter was charged at the short-lived 6d ship letter rate.

LES ILES NORMANDES

A COVER TO JERSEY DURING THE FRANCO-GERMAN WAR

Nick Martin, FRPSL

The postal history of the Franco-German War of 1870 and its consequences is a matter of special interest to me, so I was pleased to receive a scan of this cover from Henri Chartier.



Figure 1

The cover (Figure 1 above) from Chartres to St Helier was posted on 13 November 1870, at the beginning of the German forces' occupation of Alsace-Lorraine and much of northern France.

It was incorrectly franked with an 1867 Issue 20c *Napoléon lauré* instead of at the correct rate of 40c. The framed AFFRANCHISSEMENT INSUFFISANT cachet (*insufficiently franked*) in black was added and twice the missing 20c charged at 4 décimes (40c.).

LES ILES NORMANDES

The letter took a month to arrive and was backstamped on 13 December 1870 on arrival (see *Figure 2*).



Figure 2. The reverse of the cover has a French Type 16 datestamp of 10 December 1870. The town name is faint but the departmental number 34 (Ille-et-Vilaine) includes St Malo, which the cds probably shows. The cover arrived on Jersey on 13 December where it received a Type J37 datestamp on arrival.

LA ROCQUE, JERSEY – TYPE D REGISTRATION LABEL

Guy Dandoy

I recently acquired this registered letter sent from the La Rocque sub-post-office with a previously unrecorded label from that office. Shown at *Figure 2* is a registered letter dated SP 8 09 from La Rocque to Cannanore (or officially Kannur) in the state of Kerala, India. The registered label (*Figure 1*) is Type D and has a single circle Code C datestamp from the same day.



Figure 1

LES ILES NORMANDES

On the reverse side is a Malabar arrival postmark dated 26 September 1909.

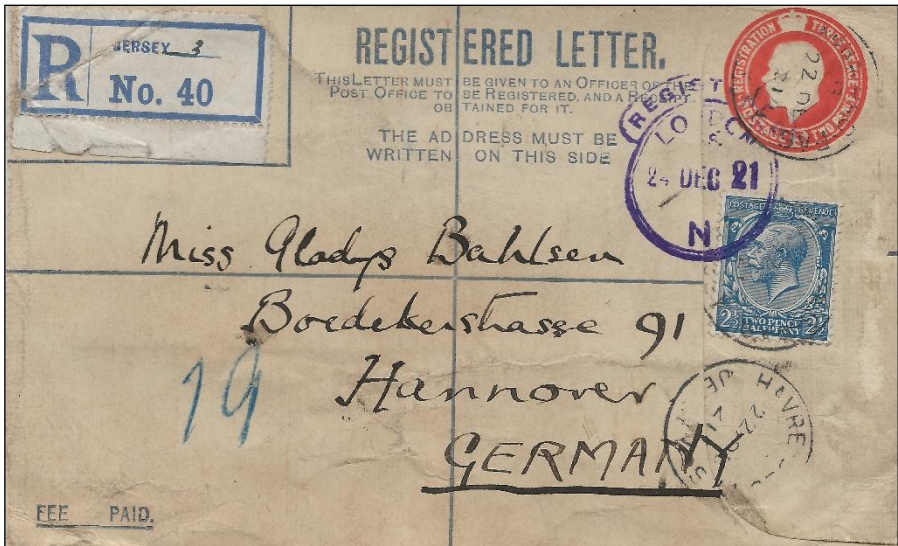


Figure 2

These type D labels were issued in 1907 for small offices that could not justify the expense of printing personalised labels. They were printed in the form of perforated sheets of fifty labels numbered in series from 1 to 50. It should also be noted that the R and the number are on the right-hand side. On delivery of these labels it was required that each label be stamped with the office datestamp but with the date and code removed. In this instance, the sub-postmaster did not follow these instructions. This example is a very early usage, as in 1910 the position of the R and the number on the label was moved to the left side to comply with UPU rules.

LES ILES NORMANDES

NEW ACQUISITION – 1921 HAVRE-DES-PAS REGISTERED LETTER David Winnie, FRPSL



Very recently, I purchased the above Registered Letter on ebay which was sent to Hanover, Germany, on 21 December 1921. The 5d embossed stamp shows that the registration fee was 3d plus 2d for postage, and was uprated by a further 2½d with the addition of a KGV blue definitive to make up the 7½d overseas rate. The stamps were cancelled by a 25mm single circle datestamp with Code B inserted. Also shown on the front, is a London Hooded registered circle in purple for 24 December 1921. On the reverse is a smart Hanover receiving mark for 26 December 1921.

The registered label is a C Type small sheet label recorded as used from this Town office in 1921. This shows JERSEY in small upper-case letters and the office number 3 inserted in manuscript. This label is illustrated in David Gurney's *The Postal History of the Jersey Sub-Post Offices*.

LES ILES NORMANDES

GERMAN ULTIMATUM FOR JERSEY'S SURRENDER IN 1940

Roger E Harris

In September 2024 I made the most important and exciting find of my entire Channel Islands collecting career. The item has no exciting cachets or postmarks but is one of three copies of the most important German document of the occupation dropped by air over Jersey on 1 July 1940. It is a copy of the German ultimatum for Jersey's surrender in its original envelope, found at the airport and thought lost for the past 84 years. It is also the first German airmail of the Occupation

At 05.40 on 1 July 1940, three pouches trailing red and blue streamers were dropped over Jersey by a German aircraft. Two pouches landed in St. Helier and the third landed at the airport. The pouches contained envelopes bizarrely addressed "On the Governor of the Isle of Jersey" (sic) and in them was a two-page typed ultimatum itemising the terms of surrender for the island. The Jersey Airport Controller, Charles Roche, found the letter dropped at the airport (*Figure 1*) and telephoned the Bailiff of Jersey, Alexander Coutanche, who ordered him to keep it and remain at his post as he had already been given two dropped on St. Helier. The German ultimatum demanded that by 07.00 on 2 July 1940, white flags and white crosses should be prominently displayed in the town and at the airport to indicate total surrender. (*Figures 3 & 4*) The States ordered a translation of the ultimatum be printed and posted immediately (*Figure 5*) and a translation appeared on the front page of that afternoon's *The Evening Post*.

At 07.00 the following morning, Oberleutnant Richard Kern, the 25-year-old pilot of a Dornier Do 17z flew over Jersey and observed the displayed surrender signs. He promptly landed at

LES ILES NORMANDES

the airport to be the first German to 'capture' Jersey and was met by Charles Roche who informed him that Jersey was ready to accept the occupation terms. Oberleutnant Kern returned to base to report his actions and in the afternoon eight Dornier Do 17z aircraft and two Junkers Ju 52/3m troop transporters landed at the airport with German assault troops and Luftwaffe officers led by Hauptmann Gussek. The German occupation of Jersey had begun.

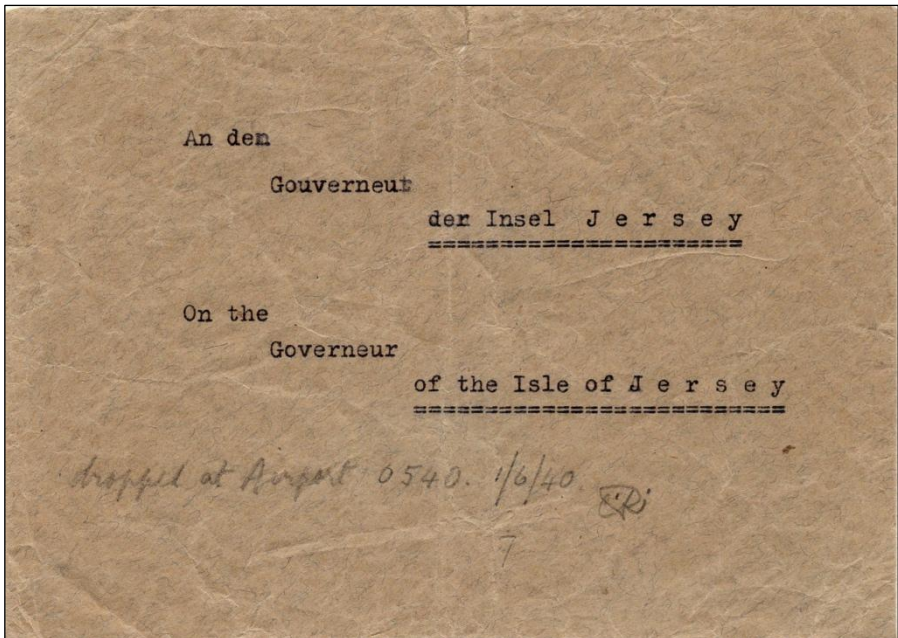


Figure 1 The bizarrely addressed envelope dropped at Jersey Airport and found by Charles Roche is endorsed and initialled by him: "dropped at Airport 0540.

1/6/40 CR". In his heightened anxiety, Roche has dated the endorsement 1/6/40, not 1/7/40.

Charles Roche had kept the airport letter and endorsed the envelope in pencil with the location, time and date of dropping but in the heat of the moment he initialled and dated it 1/6/40

LES ILES NORMANDES

(rather than 1/7/40). Order 5. of the ultimatum demanded that “Representatives of the Authorities must stay at the Airport until the occupation.”, so obeying Coutanche’s order, Roche had remained on duty to await the arrival of the German troops.

Roche was not a Channel Islander; he was an Englishman born in 1897, and a retired First World War R.A.F. lieutenant. His previous R.A.F. career should have rung alarm bells with the Germans but despite it they foolishly kept him in his crucial role managing the Airport where he was credited with destroying at least 28 German aircraft and crew by cutting the runway grass to an unsafe short level so that aircraft would skid and crash on landing. The Germans remained unaware of his sabotage regime, but it was nevertheless curtailed in 1942 when he and his wife Mary were deported to Biberach internment camp in Germany along with most of the other English born residents in Jersey. (Figure 2)

IDENTITY CARD No. 11205	
Surname	ROCHE.
Christian Names	Charles Paul Victor
Maiden Name	
Place of Birth	London. England.
Date of Birth	1/19/1897.
Residential Address	marshlands, Beaumont, St Peter.
Status	married.
Occupation	Airport management.
Transported to Germany on 29-9-'42.	




Figure 2 Roche’s wartime identity card states “Transported to Germany on 29-9-42”

Charles and Mary were in their late 40s when they were deported, but they must have been in ill health because Mary was repatriated to England on the first Red Cross mercy

LES ILES NORMANDES

repatriation via neutral Sweden of the elderly and infirmed in September 1944, and Charles followed on the second in March 1945. They were reunited in England and eventually able to return to Jersey after the liberation when Charles resumed his old job as airport controller until his retirement in 1957.

The three German ultimatum letters were the first and probably the most important documents of the occupation. They can also be regarded as the first airmail of the German occupation, but none of the three copies has ever been on public display. The two dropped on St. Helier and handed to the Bailiff remained in the Coutanche archive but the history of the letter dropped at the airport is more obscure.

When Coutanche told Roche that he did not need the letter dropped at the airport as he had already been given the two dropped on the town, Roche may not have realised its significance as he may have thought there were others. He is unlikely to have taken it with him into internment but there is no record of him giving it to someone for safe keeping or hiding it until his return to Jersey. It has always been assumed that it was destroyed or lost.

America in 2024 saw the first two parts of a charity auction of the Alfred F. Kugel military postal history collection, a philatelic collection of worldwide military mail dating from the late 1800s to modern times, valued at several million dollars. There were only two lots from Jersey in the auction; one was a genuine set of the "Swastika Jersey 1940" overprinted King George VI stamps along with the Bigwood trial, and the other, a poorly photographed envelope that purported to have contained the German ultimatum dropped on 1 July 1940.

LES ILES NORMANDES

I recognised that the envelope might be the missing Roche letter and attempted to authenticate it before the auction closed. I obtained good photographs of the envelope and its contents and approached various authorities in Jersey who might have seen the other two letters. Only two people had.

Damien Horn, owner of The Channel Islands Military Museum had seen one of the letters complete with its pouch and ribbons that had been kept by Coutanche, and he thought a second one was also in the Lord Coutanche collection.

Georgie Bois, Archives Officer of Jersey Heritage confirmed that they held the Lord Coutanche Collection containing one of the letters with the original pouch, but the collection was not yet catalogued, and the letter was not on display. As the collection is not catalogued, this raises the possibility that the collection holds both letters dropped on St. Helier.

Nobody was able to offer me any more information about the third letter and the auction house knew no more provenance although it was thought Kugel had acquired the letter from a German collector in the 1980s along with the swastika over-printed stamps. After some strong bidding (I was not the only person to have recognised the letter's significance), I managed to acquire the letter in the American auction in September 2024, and I've since displayed it at the CISS 75th Anniversary Display at the Royal Philatelic Society in January, and again during our weekend visit to Guernsey in April this year.

A very important German occupation document and first occupation airmail letter has at last seen the light of day.

LES ILES NORMANDES

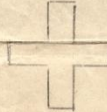
Den 1. Juli 1940

An den

Chef der militärischen und Zivilen Dienststelle

Jersey (St. Helier).

- 1.) Ich beabsichtige die militärischen Einrichtungen von Jersey durch Besetzung zu neutralisieren.
- 2.) Zum Zeichen, daß die Insel, sowie ihre militärischen und sonstigen noch vorhandenen Einrichtungen kampflos und unzerstört übergeben werden, ist ab 2. Juli 1940 07.00 Uhr vormittags ein großes weißes Balkenkreuz



auszulegen.

- a) auf der Mitte des Flugfeldes im Osten der Insel,
- b) auf der höchsten Fläche der Hafenbefestigung,
- c) auf dem Platz nördlich des inneren Hafenbeckens.

Ferner haben sämtliche Befestigungen, Bauten, Anlagen und Häuser die weiße Flagge zu zeigen.

- 3.) Sind diese Zeichen der friedlichen Übergabe bis zum 2. Juli 40 07.00 Uhr nicht zu beobachten, so wird ein schweres Bombardement einsetzen
 - a) gegen alle militärischen Anlagen,
 - b) gegen alle Anlagen und Einrichtungen, welche der Verteidigung Nutzen bringen.

- 2 -

Figure 3 The first page of the ultimatum letter indicating the style of white cross to be painted on the ground.

LES ILES NORMANDES

- 2 -

- 4.) Die Zeichen der Übergabe müssen bis zur Besetzung der Inseln durch deutsche Truppen ausliegen.
- 5.) Die Vertreter der Behörden haben sich bis zur Besetzung auf dem Flugfeld aufzuhalten.
- 6.) Jeder Radioverkehr und sonstiger Verkehr mit Stellen ausserhalb der Inseln wird als feindliche Handlung aufgefasst und hat das Bombardement zur Folge.
- 7.) Jede feindselige Handlung gegen meine ~~meine~~ Beauftragten hat das Bombardement zur Folge.
- 8.) Im Falle der friedlichen Übergabe wird den friedfertigen Bewohnern Leben, Eigentum und Freiheit feierlich zugesichert !

Der Kommandant der Deutschen Luftstreitkräfte in der Normandie


General.

Figure 4 The second page of the ultimatum letter signed by The Commander of the German Air Forces in Normandie

LES ILES NORMANDES

Translation of a Communication addressed to the Governor of the Isle of Jersey.

1st July, 1940.

To the Chief of the Military and Civil
Authorities

Jersey (St. Helier).

1. I intend to neutralize military establishments in Jersey by occupation.
2. As evidence that the Island will surrender the military and other establishments without resistance and without destroying them, a large White Cross is to be shown as follows, from 7 a.m. July 2nd, 1940.
 - a. In the centre of the Airport in the East of the Island.
 - b. On the highest point of the fortifications of the port.
 - c. On the square to the North of the Inner Basin of the Harbour.Moreover all fortifications, buildings, establishments and houses are to show the White Flag.
3. If these signs of peaceful surrender are not observed by 7 a.m. July 2nd, heavy bombardment will take place.
 - a. Against all military objects.
 - b. Against all establishments and objects useful for defence.
4. The signs of surrender must remain up to the time of the occupation of the Island by German troops.
5. Representatives of the Authorities must stay at the Airport until the occupation.
6. All Radio traffic and other communications with Authorities outside the Island will be considered hostile actions and will be followed by bombardment.
7. Every hostile action against my representatives will be followed by bombardment.
8. In case of peaceful surrender, the lives, property, and liberty of peaceful inhabitants are solemnly guaranteed.

The Commander of the German Air Forces in Normandie,

General

The States have ordered this Communication to be printed and posted forthwith, and charge the Inhabitants to keep calm, to comply with the requirements of the Communication and to offer no resistance whatsoever to the occupation of the Island.

*Figure 5 The States' translation of the ultimatum, printed and posted for the
"Inhabitants" of Jersey.*

LES ILES NORMANDES

SWITZERLAND TO JERSEY: COMPULSORY RE-REGISTRATION ON RE-DIRECTION Bob Medland

Summary

Mail re-directed from the address on an item of mail but dropped in a letter box was treated as "Posted Out of Course" and was compulsorily re-registered for delivery to the new address.

Original posting

The letter shown below was sent from Hagendorn (Canton Zug) in Switzerland on 26 February 1948, franked with a 60 centimes stamp for 30c letter rate + 30c registration fee (*Figure 1*).



Figure 1

LES ILES NORMANDES

It was addressed to the Ritz Hotel, St Helier, Jersey and received the oval registration arrival mark REGISTERED / JERSEY CHANNEL IS. / 2 MR 48 on the back (*Figure 2*).

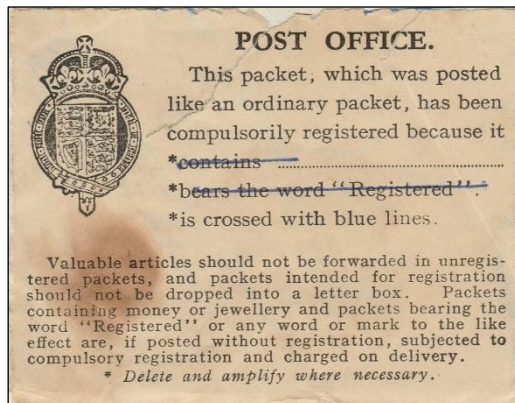


Figure 2

Re-redirection

Following delivery, the letter was re-directed to the Montfort (House) Hotel, Great Union Road, and apparently dropped in a letterbox without payment of an additional registration fee. The fact that the cover was marked with the usual blue cross was sufficient for the post office to re-register it compulsorily. The partially adhesive label was attached (*Figure 3*) with the explanation, and the cover was struck with the boxed cachet TO PAY POSTED OUT OF COURSE with the Jersey main post office identifier 409 at bottom left and 3 (pence) inserted in manuscript for the standard registration fee.

Figure 3



LES ILES NORMANDES

The Hotels

Both the Ritz Hotel (*Figure 4*) and the Montfort House Hotel (*Figure 5*) were developed in the heyday of Channel Island tourism in the 1930s but both were closed as part of the sector's general decline in the 1980/90s.



Figure 4



Figure 5

LES ILES NORMANDES

PSJ CLARK

Information supplied by Mark Bailey, FRPSL

In the September 2024 issue of *Les Iles Normandes*, member Roger Cichorz was trying to get to grips with who P S J Clark was.

Peter Sidney John Clark was born on 31 March 1921 in Caterham, Surrey. His father was Sidney Clark. In 1939 he was living with his parents and older brother, Jack, at 52 Foxon Lane, Caterham, Surrey.

In 1941, he joined the Royal Regiment of Artillery with the service number 1817689. In 1952, he married Annemarie Katharina Van Kempen (1925-2011).

In the late 1950s and early 1960s, he was the Honorary Secretary of The British Businessmen's Club, with an address at Tannenstrasse 8, Düsseldorf, Germany.

As a Member of the Institute of British Engineers he used the postnominal M. Inst. B.E.

Peter Clark was an expertiser, and from 1961 he was a member of the Bund Philatelistischer Prüfer E.V., the leading German association for the examination of philatelic collectibles. His areas of expertise were of the German Occupation of the Channel Islands, Lundy Island, and Propaganda Forgeries. It was within these philatelic categories that he issued expertisation certificates.

In Surrey, he was at 122 Eldon Road, Caterham and he later moved to 68 Norman Avenue, Sanderstead, South Croydon.

LES ILES NORMANDES

This address was one he used as a return address for items of post he had sent Poste Restante.

On 16 December 1990, Annemarie Katherina Clark and Peter Sidney John Clark were appointed Directors of Palex Consultants Ltd. This business services company was registered on 23 June 1988, and it was active until 31 March 1991.

Peter and Annemarie lived at 68 Norman Avenue until the end of their lives.

Peter Clark died on 23 March 2010, and Annemarie died on 26 October 2011.

Other than as an addressee on items of mail, Mark has found no references to a Patricia Clark associated with Peter and Annemarie.



CHANNEL ISLANDS AUCTIONS

To include many items of Channel Island interest:
postcards, stamps, postal history, ephemera, German
Occupation, banknotes, books, and coins.

www.easyliveauction.com/channelislandsauctions

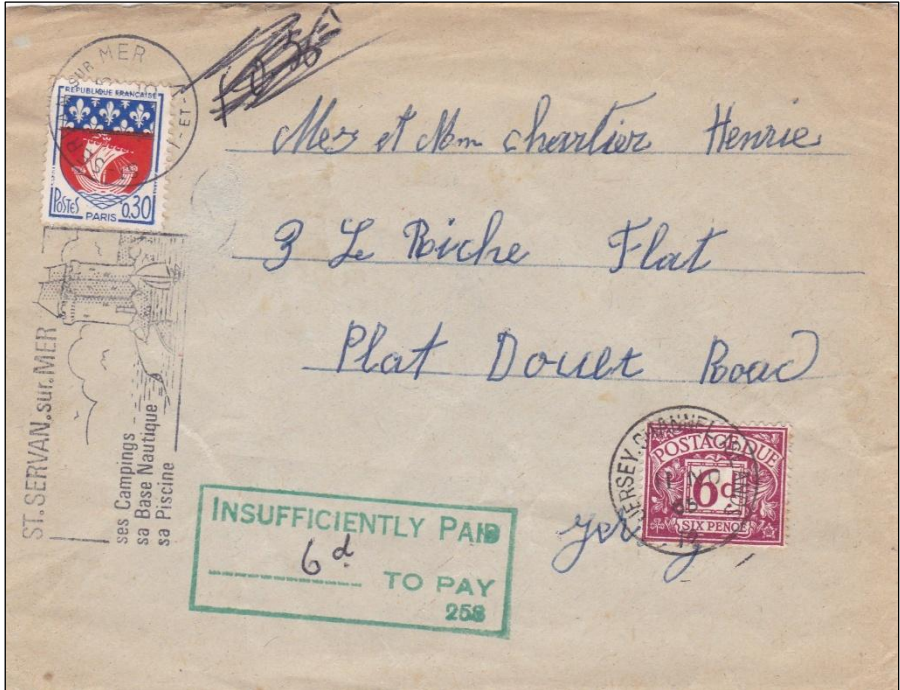
For further information contact Norman Wilkinson
e-mail: cia@cwgsy.net phone: 07781 113463

LES ILES NORMANDES

AN UNDERPAID COVER FROM ST SERVAN TO JERSEY, 1966

Nick Martin, FRPSL

The scan of the cover below is another sent in by Henri Chartier.



It was posted at St Servan, a town on the semi-tidal River Rance which flows into the English Channel between Dinard and Saint-Malo to Jersey. It was posted in November 1965, franked at 30c instead of at 60c, and received a nice publicity cancellation for the town as a centre for sea activities, its camping sites and swimming pool. How does a 6d postage due charge in 1965 relate to an underpayment of 30c?

Thanks to Gerald Marriner, and Ken Snelson of the Postage Due Mail Study Group for commenting on the surcharge marking and postage charges.

LES ILES NORMANDES

At that time the French charge for UPU mail was 60c and the letter was therefore 30c underpaid. The calculation of the fee is as follows: 30c deficiency is $30/60 \times 6d = 3d$ postage due, doubled to a minimum charge of 6d.

Both Ken and Gerald commented that the green charge mark 258 was struck at Dover.

“Merci”, Henri, for the scan, and to Ken and Gerald for their interpretation.

**CHANNEL ISLANDS LOCAL ISSUES
HERM, JETHOU, LIHOU,
ALDERNEY PARCEL DELIVERY SERVICE,
COMMODORE SHIPPING COMPANY**

**CHAUSEY AND OTHER FRENCH CHANNEL ISLANDS
PRIVATE ISSUES AND REVENUES**

Regular retail lists and auctions

Please contact me for your copy today:

JON AITCHISON, Old Tithe Hall, Start Hill,
Near Bishop's Stortford CM22 7TF, United Kingdom.

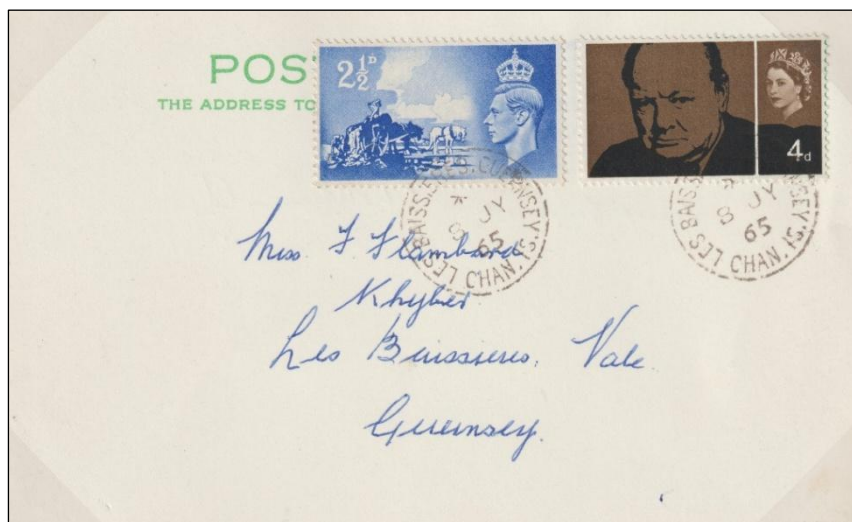
Telephone: +44 (0)1279 870488. Email: britishlocals@aol.com

LES ILES NORMANDES

LAST DAY OF THE LA BAISSIERES SUB-OFFICE IN GUERNSEY, 1966

John Triggs FRPSL

The postcard illustrated below was franked with a 1948 Third Anniversary of the Liberation 2½d and a 1965 Churchill Commemoration 4d (on the first day of issue). The two stamps on the postcard are struck with the Type 1 date stamp, with a despatch date of 8 July 1965, and addressed to Miss F Flambard, Khyber, Les Baissières, The Vale, as the road running westwards has the St Peter Port-Vale parish boundaries through it.



A Type 1 registration label was issued for use from opening on 1 February 1952. Almost 1,400 registered letters were recorded but not many examples are known to have survived. This sub-post office closed on the 8 July 1968 after only 16 years of serving this area of western St Peter Port.

Coincidentally, the 8 July datestamp on the postcard for the first day of use of the Churchill 4d stamp is also the closure date of this sub-office.

LES ILES NORMANDES

TOWN POST OFFICE, GUERNSEY

David Winnie FRPSL and John Triggs FRPSL

On 20 May 2025, Guernsey Post formally announced that the Town post office, situated in the old Tourist Information Centre, would close on Friday 4 July and would be relocated to a new home at 7 Commercial Arcade – a familiar location that housed the Arcade sub-post office many years ago.

The decision to vacate the North Plantation building had to be made as it was to be re-purposed as the Victor Hugo Centre.

Three counter positions were in use at the time of the announcement, and these were to be dismantled and rebuilt at the new office at 7 Commercial Arcade. Consequently, while this took place, the post office moved temporarily within the North Plantation building, but with only two counter positions being available in the interim period.

The Town office had used three datestamps originally but, during the interim period, only the datestamps with Codes F and G were used. The datestamp with Code H was returned to Envoy House.

However, on close examination of the datestamps used on the covers obtained on the last day of opening, there is clear evidence that those datestamps issued and used when the office was opened in April 2024 had been replaced.

This is illustrated below (*Figures 1 and 2*) of like-to-like scans of the two datestamps with Code F inserted. On examination, it is evident in (*Figure 2*) that the date is much larger than in the original datestamp and GUERNSEY/POST at the foot of the datestamp is also larger, and the lettering spaced differently.

LES ILES NORMANDES

This change has now been confirmed by Guernsey Post, although the specific date of the change is not available. It is believed that the new datestamps were issued sometime during 2025.



Figure 1

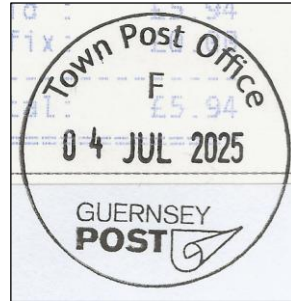


Figure 2

At 8.30am on Tuesday 8 July 2025, the new Town post office at 7 Commercial Arcade officially opened to the public. The new location would offer a full range of postal services in a more modern and central setting. The branch would also include Saturday opening hours. (Fig 3 below). The new office has three counter positions and therefore all three datestamps with Codes F, G and H are in use.



Figure 3

LES ILES NORMANDES

The photograph below (*Figure 4*) shows how this new type of datestamp arrives from the manufacturer. The main element of the datestamp is in blue ink and the date is in red ink.



Figure 4

It is Guernsey Post's usual practice to only use black ink. However, as can be seen from the Special Delivery envelope below (*Figure 5*), cancelled on the first day of opening, this has not been the case as the "spare" datestamp with Code H inserted and returned from Envoy House, is in blue ink with the date in red ink. It looks most unusual!!



Figure 5

LES ILES NORMANDES

Guernsey Post also announced that a small Postal Museum would be located on the top floor of the building and would be open to visitors on Tuesday 29 July to coincide with the 200th Anniversary of the opening of Commercial Arcade on that day. The museum showcases the Island's rich postal and philatelic heritage. An interesting new venue for our members to visit.

ISLE OF SARK ISSUES ITS OWN POSTAGE STAMPS

On 27 August Guernsey Post issued the Isle of Sark's first postage stamps of its own.

The first set commemorates the island's wartime history with stamps depicting key moments from the German Occupation during World War II, and the 80th anniversary of the island's Liberation on 10 May 2025.

A definitive stamp series is to be released on 3 September, featuring Sark's extraordinary wildflowers and depicting several species.

We no longer include notifications of new issues in Les Isles Normandes, but this is a reminder that we are able to purchase these new issues as well as other current Islands issues direct from the respective postal authorities direct links are available on the CISS webpage and by copying this link you can reach the correct pages: [Links - Channel Islands Specialists' Society](#)

LES ILES NORMANDES

JETHOU'S 1963 EUROPA ISSUE

André Dufresne RNCP

When Captain Cliff decided to issue a set of stamps for Jethou to commemorate Europa 1963, he chose to have the stamps printed by Thomas De La Rue & Co. Ltd. rather than by Guernsey Lithoprint Ltd. It could be that he wanted a better quality of printing but the real reason for the change could well be that Guernsey Lithoprint Ltd. did not want to repeat their disastrous experience at perforating a large quantity of stamp sheets. After all, Cliff intended to issue 50 000 sets of the Europa 1963 stamps. The designer was again Charles Coker, who submitted a first proposal to Captain Cliff (*Figure 1*) and Cliff settled for a two-values set, 3d and 1/9.



Figure 1

LES ILES NORMANDES

Coker's first draft for a 3d stamp differs in many details from the final issue: most notably the value is within a square whereas in the issued stamp it is within a circle; there is a line around the whole design in the final version but no such line in this rough draft; the sky and the sea have fewer lines in the final design and the bird, a razorbill, is much more detailed in the issued version. Additionally, there is no designer's name at the bottom left of the design in this first draft. As Coker wrote in the upper margin, it was only a rough draft. He drew a 38mm x 22mm rectangle at the upper left to show what the final size of the stamp should be, and he wrote "x 3½" at top right to indicate that this drawing was 3½ times the size of the final stamp. The overall size of the paper is 248mm x 176mm, whereas the drawing itself measures 133mm x 77mm.

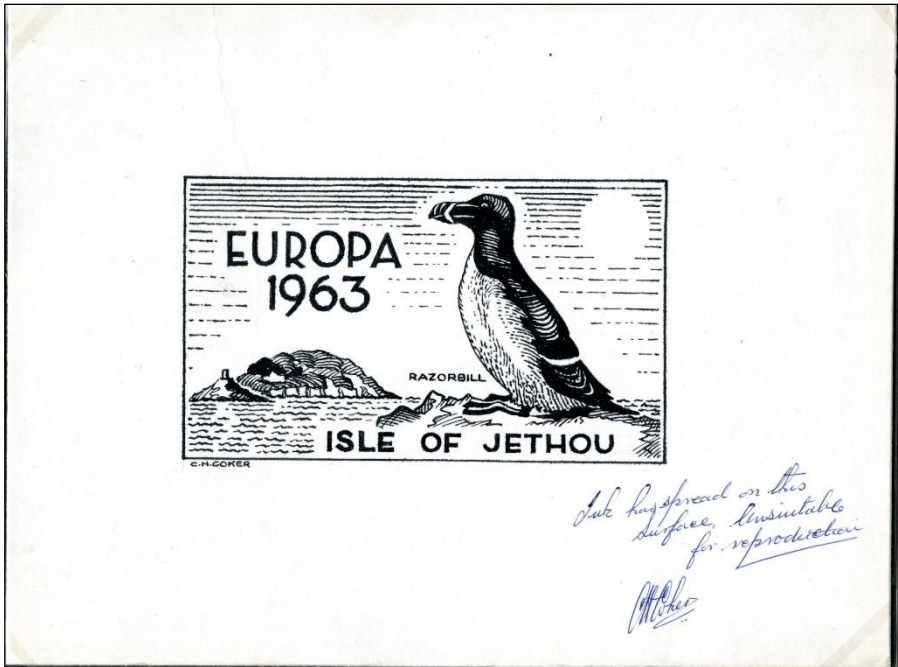


Figure 2

LES ILES NORMANDES

Captain Cliff wrote his comments in the right-hand margin: *"3d vignetted, line right round, Isle of Jethou reduced in size"*. Charles Coker corrected his design accordingly and he submitted a second draft (*Figure. 2 above*), which was unfortunately drawn on porous paper.

The paper size is 245mm x 184mm while the design measures 133mm x 78mm. Coker made the corrections requested by Captain Cliff and he added his name below the design at bottom left. But because the paper was porous the ink bled and Coker wrote *"Ink has spread on this surface. Unsuitable for reproduction"*. We must conclude that he redid his design once again, but I have no clue as to the whereabouts of this final, printer-ready design.

Normally, Bradbury Wilkinson would submit colour essays on cards and as we will see in the next article, they did so for the Europa 1964 issue. I have never seen such De La Rue colour proofs on cards of the Europa 1963 issue and they are not mentioned in Backman's catalogues, which does not mean that they don't exist of course. Imperforate proofs in the issued colours are not rare (*Figure 3*). According to Backman and Forrester, the same plate was used for printing the colour background of both values, but different plates were used for the black part.



Figure 3

LES ILES NORMANDES

This issue was printed by De la Rue in small sheetlets of 12 stamps (4 across and 3 down), set up in larger printer's sheets of 4 sheetlets arranged 2 across and 2 down (see Figure 4 below for a reconstruction of a printer's master sheet), as shown in Backman's *Jethou of the Channel Islands Specialized Catalogue* published in 1976 and in Backman & Forrester's *The Channel Island of Jethou, Its stamps and postal history of 1978*.

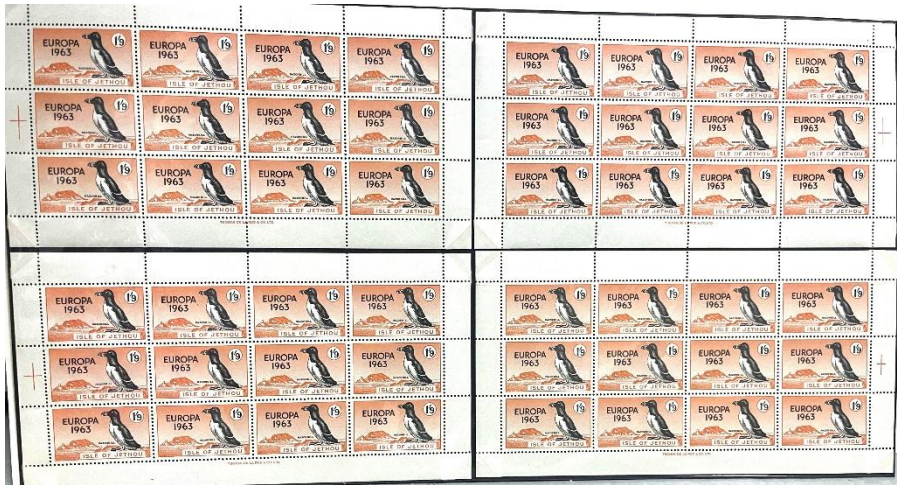


Figure 4

The printer's imprint appears once at the center of the bottom margin of each sheetlet of twelve. The four sheetlets can be identified as follows: the perforation guide in the shape of a cross in the left or right margin identifies a left or right pane, and the bottom margin of the bottom panes is imperforate through, but it is perforated in the upper panes.

In the next instalment covering the Europa 1964 issue we will see some very interesting De La Rue proof cards.

JERSEY and GUERNSEY

A large stock of all issues from their first issues in October 1969 to date. Our stock includes mint, used, FDCs and Presentation Packs, also a large stock of pre-independent issues of Occupation and Regionals.

Send for our latest price list today
(Free of charge) and see for yourself.

We also stock C. I. Postal History & Postcards
L.L. and Allix wants lists welcome

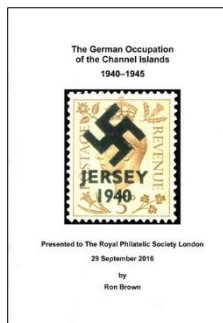
G. ROBBE LTD., P.T.S.
35, Mont Pelle,
Tower Road
ST Helier Jersey JE2 3LW
TEL: 01534 723084
e-mail: robbestamps@hotmail.com

THE CHANNEL ISLANDS SPECIALISTS' SOCIETY

Founded in 1950 for the study of the stamps and postal history of the Channel Islands

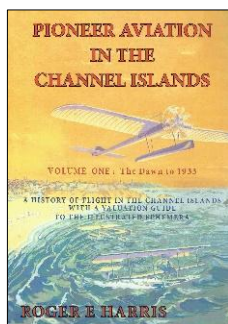
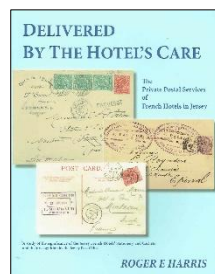
C.I.S.S. PUBLICATIONS

Recent Publications

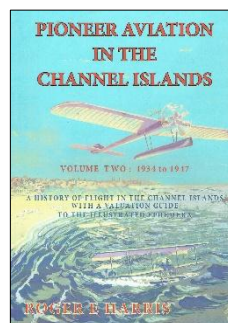


The German Occupation of the Channel Islands 1940-1945, Ron Brown, 2016, 114pp, (A4), *Handout to the Royal Philatelic Society London*. **Price now reduced to £15 including postage and packing**

Delivered by the Hotel's Care, Roger Harris, 93pp, softback, 2022. *The private postal service of the French Hotels in Jersey*. **£4.00**



Pioneer Aviation in the Channel Islands, Roger Harris, two volumes, 527pp, 2020. **£30.00 per volume or special members' price £48.50 for both volumes.**



Prices include postage and packing within the UK.
Orders from books@ciss.uk

Further titles are available. Please see our website -
www.ciss.uk/publications

GROSVENOR



Grosvenor is home to the only regular major auctions of specialised Great Britain stamps and postal history. Interesting and unusual Channel Islands material features regularly.

Complimentary copies of our popular catalogues are available to members on request and each auction is available to view, with additional illustrations, on our website.

We work closely with vendors to ensure that presentation and prices achieve the highest possible results. Commission charges are fully inclusive with no hidden 'extras' and are negotiable for valuable consignments.

Contact **Tom Margalski** or **Ben Palmer** at the address below for further information and assistance.

399-401 Strand Third Floor London WC2R 0LT

T: 020 7379 8789 E: info@grosvenor-auctions.co.uk

www.grosvenorauctions.com