



**CHANNEL ISLANDS
SPECIALISTS' SOCIETY**

September 2014

Volume 33 No.3

THE CHANNEL ISLANDS SPECIALISTS' SOCIETY

Founded in 1950

for the study of the stamps and postal history of the Channel Islands

OFFICERS

President: Alan N. Moorcroft FRPSL

E-mail: anmoorcroft@btinternet.com

Chairman: Dave Edwards

E-mail: bedenesteda86@btinternet.com

Secretary: Richard Flemming

64, Falconers Green, Burbage, Hinckley. LE10 2SX. *E-mail: rflemming@talktalk.net*

Treasurer: Robert Porter

3, Nursery Road, Hoddesdon. Herts. EN11 9LA. *E-mail: robertwporter@btinternet.com*

Journal Editor: David Gurney FRPSL

4, Kingscote, Tree Lane. Plaxtol Kent TN15 0QA. *E-mail: nangurney1@aol.com*

Packet Secretary: John Triggs

"SUNNYSIDE", La Gibauderie, St. Peter Port, Guernsey GY1 1XF. *E-mail: jtriggs@cwgsy.net*

Auction Secretary: Nick Stuart

3, Dudley Road, Walton on Thames, KT12 2JT *E-mail:- nick_stuart@talk21.com*

Membership & Subscription Secretary: Moira Edwards

86, Hall Lane Sandon. Chelmsford. Essex. CM2 7RQ. *E-mail: membership@ciss1950.org.uk*

Advertising & Press Officer: Stephen Wells

The Hollies. 42, High Street, Tarring. Worthing. West Sussex. BN14 7NR
E-mail: press@ciss1950.org.uk

Competitions Secretary: Gavin Wood

3, Hockenhull Crescent, Tarvin. Chester. CH3 8LJ *E-mail: gavinwood1@btinternet.com*

CISS Internet address:- www.ciss1950.org.uk

Membership is open to all interested in Channel Islands stamps
and postal history, postcards and ephemera.

Membership application forms can be obtained from the Membership Secretary.
Exchange Packets are circulated regularly. A Postal Auction is held twice yearly.

A 36 page colour Journal is published quarterly.

Meetings are held three or four times a year in London and the Provinces.

ADVERTISEMENT RATES IN LES ILES NORMANDES

Outside back cover: £40.00. Full page: £30.00. Half page: £18.00

©The Channel Islands Specialists' Society

SUBSCRIPTIONS and STANDING ORDERS

Will members please note the following points:-

1. Subscriptions, which are due on **1st January**, should be sent direct to **Moira Edwards** and **NOT** to any other officer of the Society. A Subscription Invoice will be sent in the December issue of the Journal.
2. All members may now pay by credit card. The amount will be the normal subscription plus 5% for charges. Send your card details including number and expiry date to **Moira Edwards** and to no one else.
3. Overseas members may still pay by STERLING cheque drawn on a U.K. Bank. Non-sterling cheques and non-sterling currency notes will no longer be accepted. Money Orders in sterling currency are acceptable.
4. Members who have not paid by **14th February** are assumed to have resigned.
5. Standing Order forms should be **sent by members to their own bank** and not to the Subscription Secretary.

The NEW Subscription rates for the year 2014 are:-

COUNTRIES	CLASS OF POSTAGE	ANNUAL SUBSCRIPTION RATES in Pounds Sterling
Great Britain	2 nd Class Letterpost	Ordinary Members: £20.00 , or choosing an electronic copy of quarterly Journal in place of a posted hard copy; £15.00 Juniors, Senior Citizens and Registered Disabled: £10.00 , or choosing an E-Journal: £7.50 Life Members: £10.00 , or choosing an E-Journal: £6.00
Europe	Airmail Printed Paper/ Small Packet Rate	Ordinary Members: £25.00 , or choosing an E-Journal: £15.00 Life Members: £10.00 , or choosing an E-Journal: £6.00
Rest of the World	Airmail Printed Paper/ Small Packet Rate	Ordinary Members: £30.00 , or choosing an E-Journal: £15.00 Life Members: £10.00 , or choosing an E-Journal: £6.00

PLEASE ADD A 5% SERVICE CHARGE TO ALL CREDIT CARD PAYMENTS

We are pleased to welcome the following new Members:-
2123 Mike Moody, Wilts; 2124 Rod Mountcastle, Lincs.

CONTENTS

Secretary's Clipboard	3
Member's Meeting Report 5th July 2014	4
Members' Wants	5
The Guernsey Maltese Cross cancellation	6
Guernsey Post Office EPOS Postage Labels	7
The postal relationship between the Channel Islands and France	14
Channel Islands' mails via Weymouth 1794 – 1845	18
Vatican Apostolic Delegation	27
A hand sewn Occupation postage due cover	32
64th Annual General Meeting Report	33
Unrecorded Midget Parcel Post Labels	36
Forthcoming New Stamp Issues in 2014	39

Whilst every care is taken in the production of this Journal statements expressed in articles in *LES ILES NORMANDES* are the sole responsibility of the author(s) and are not necessarily endorsed by the Editor or by the Channel Islands Specialists' Society neither of whom can be held responsible for the accuracy of the information therein or any consequence arising there from

EDITORIAL

Another 40 page Journal in order to cope with the several articles I have to hand – a real bonus for an Editor today although I do keep twisting arms and spotting interesting Channel Islands items elsewhere suitable for this Journal. In particular I plan to commence serialisation from the December issue of an important and long examination of the German censorship of mails during the Occupation.

This edition includes another interesting range of shorter articles on various subjects, also highlights some important new finds and completes Ron Brown's story of the Channel Islands mail service via Weymouth from 1794 to 1845. Enclosed also are the Booking Form for the Guernsey weekend meeting next April, a Notice of the important Grosvenor auction of the John Bamberry Gold Medal Postal History collection and the Society October Auction list with many fine items for you all.

Members may also find the Report of the 64th Annual General Meeting interesting as it marks the work of your Committee during the past year.

SECRETARY'S CLIPBOARD

by Richard Flemming

By the time you read this, the summer will be coming to a close and nights are starting to draw in. Thank you to all those members who attended the 64th Annual General Meeting held at No. 41 Devonshire Place, London. Once again there was an excellent room auction with Gerald Marriner acting as auctioneer. Herm was the key theme for members' displays and some excellent material was on show.

You should be receiving your copy of *Les Iles Normandes* before the Wakefield Regional Meeting, hosted by David Horner, is to be held at the York House Hotel, Wakefield, WF1 2TE on **Saturday, 20th September** commencing at 10.00 until 17.00. The theme for any display is "Channel Islands material with the letters C or D".

Preparations for the 2015 Members' Weekend at the Peninsula Hotel, Guernsey are well underway and thanks must go to John Triggs for his hard work behind the scenes. You will see that the hotel requires us to pay the full amount for the weekend before we arrive. I hope you will understand that this is a requirement of the hotel as a part of their policy. If you are intending to travel to Guernsey remember that you will require health insurance. As Guernsey is not a member of the EU, current reciprocal health care agreements do not apply. I suggest the same for your hotel account so you would be covered if you could not travel at the last minute.

Forthcoming meetings:

20 September 2014	Wakefield Regional Meeting, Yorkshire
13 December 2014	Members' Meeting. Theme: December dates, Christmas issues, etc. at RPSL, London
14 February 2015	CISS Members' Annual Competition Day plus members' standing displays at RPSL, London
24th – 26th April 2015	Members' Weekend at Peninsula Hotel, Guernsey

Wakefield Regional Meeting Saturday 20th September, 2014

Hosted by David Horner, to be held at the York House Hotel, Wakefield, WF1 2TE commencing at 10.00 until 17.00. Theme for any display is "Channel Islands material with letters C or D".

All members and guests are welcome.

MEMBER'S MEETING REPORT 5th July 2014

Twenty one members and one guest were present at the Royal Philatelic Society London at 41, Devonshire Place, for the 'Members' Meeting' prior to the 64th AGM. The themes for the meeting were 'Herm' and 'New Acquisitions'. The meeting was preceded by a 50 lot room auction, with Gerald Marriner acting as auctioneer. Bidding was brisk with only a few lots left unsold and when the figures were added up, the sum realised was just over £610.

As we still had time before breaking for lunch at the Kings Head it was agreed to commence with some of the members' displays. Apologies if details are not entirely correct.

John Hurst presented three sheets that showed Herm Churches. This was followed by one of our new members, **Kim Pitts**, who displayed Herm stamps and covers including the 1953 Coronation issue, 1959 Royal Visit and booklets of the 1958 Map definitives. Well done Kim.

Norman Sansom described his display as a 'selection of Herm stamps' which started when he collected some Herm stamps following a visit to the Island. Norman showed an extensive range of Herm issues including stamps on cover, trial colours and proofs, ending on the 1969 'Ships' issue.

Robert Shaw showed a two-frame display of what he termed 'Herm artwork' showing work that was used to produce Herm stamps. This was followed by **Bob McDonald** who showed items including an embossed 1d pink envelope cancelled by a Guernsey Maltese Cross and an interesting "Old Mother Hubbard" Red Cross message form, where coded messages were sent indicating the state of the food supply within the Islands, and a St. Aubin FDC with the 1d 'Views' stamp bisected and a ½d Jersey 'Arms' dated 1-6-43.

Gerald Marriner showed two sheets, one of Alderney and the other Herm following cessation of the German Occupation. **Nick Stuart** showed his FDC of Herm 'Scenes' and the Herm Pigeon Post stamps on envelope and a Pigeon Post message form. There was also a price list for Herm stamps dated 1954 and finally booklet cover proofs.

Shirley Hancock presented items of the Herm 1962 'Anti-malaria campaign' stamps that she managed to obtain as an auction lot. Included in the lot were two examples of the issue in proof format.

Jon Aitchison concluded the first half with a display of the 1962 Europa issue of Herm including colour plates from the Harrison archives. Also displayed were several Herm baggage labels and ultimately items from the

SS Ibex display that had been shown at the Society of Postal Historians weekend at Redditch.

Following the AGM, **Jon Aitchison** continued with items of Herm postal history, including a 1758 lease for Herm Island and the 1780 copy when the lease was changed. There was also an 1823 letter from Herm to Jersey and an item of registered mail that followed Princess Wanda, who had just left Herm to go to London and, seemingly, beyond. Originally sent to Herm, it was forwarded to London. Upon arrival at London Princess Wanda had travelled on to Yorkshire. The item was forwarded on, but placed in a letter box and was deemed “Posted out of course” and therefore was re-registered.

In Jon’s final frame there were rare examples of the Herm Post Office double circle datestamp used on mail from 1929-36 and a 1942 rainfall census postcard from Herm. There were also examples of the 1949 Neopost franking machine that was used on Herm for only six weeks. Finally there were several examples of Herm registration labels used on Sark and registered labels of Guernsey used on Herm.

Richard Flemming concluded the day’s displays with several items that he recently acquired from an auction including a Les Gravees Parcel Post label used in April 1922 and a Guernsey Customs Duty Parcel Post Label used in 1956. The final item was a postcard displaying a **1d/TO PAY/LIABLE TO/POSTCARD RATE** handstamp.

Richard Flemming Secretary

Member’s Wants.

Andy Mazzara in the USA is still looking for the Guernsey un-mounted mint imprint blocks from the 5th and 13th printings of the 1d Arms stamps. If you can help, please contact him by email at me.inc@comcast.net or contact the Editor.

Geoff Cory has acquired a Red Cross envelope addressed to St Peter Port, Guernsey with a Guernsey datestamp with this four digit boxed number on the back. Could this boxed 1988 be a Census Enumerator’s mark perhaps applied at Frankfurt or something else? Those known so far are all three digit boxed numbers and not four digit. Replies to: geoff@corygallery.com or to the Editor.



The Guernsey Maltese Cross cancellation.

by David Gurney FRPSL

Our member, Bob MacDonald, has recently acquired this interesting and rather nice cover which is a new addition to my database of Maltese Crosses used in the Islands.



The Guernsey Maltese Cross is a near perfect strike and the envelope most interesting with its re-direction from Aldershot to Farnham Surrey (sic).



This example brings the database numbers to Guernsey Cross: **89** including **8** Mulready letters and the Jersey Cross: **148** including **12** Mulready letters identified to date.

Guernsey Post Office EPOS Postage Labels.

by Jon Aitchison FRPSL

This article is a follow-up to another entitled 'Jersey Counter Printed Stamps' in the September 2013 edition of *Les Iles Normandes*. That article speculated that Guernsey also probably had their own version of counter printed stamps. This has now been confirmed and they have an official name, EPOS Postage Labels, which stands for Electronic Point of Sale postage labels.

Guernsey first used these sometime prior to the 12th December 2008. The original series only showed the Guernsey Post logo with a top border made of squares, as illustrated here.

In June 2010, however, Guernsey Post started producing pictorial labels and I am indebted to Bridget Yabsley, their Marketing Manager, for providing comprehensive details and images.



Each label measures 75mm wide by 58mm high and is self-adhesive on concertina backing paper. They are pre-printed with a frame, Guernsey Post logo and pictorial artwork, in full colour. Details of date and time of use, Post Office location, weight and postal category, price and a reference number are printed onto the labels by the counter machine at the point of sale. The blank labels are printed in tete-beche pairs on a continuous run of between 50,000 and 100,000 at a time, which are ordered as and when required. No record has been kept of quantities printed or reprinted as the labels themselves have no monetary value. The counter machines produce accurate records of the quantity and value of sales, which is not in the public domain, but do not record the number of each type of label used as it is of no accounting relevance. The labels are not available for direct purchase to be taken away by the public, whether overprinted with the value etcetera or not, so their issue has not been publicised to collectors. The only way to obtain them is off mail. They cannot be purchased from the Philatelic Bureau.

Guernsey Post has not given any instructions regarding whether or not they should be cancelled. As mail bearing them has to be retained by the counter clerk there should be none in circulation so a cancel is unnecessary. The two examples seen by me so far do however have cancellations. In theory an uncanceled example removed from an envelope and re-used would have to be placed in a postbox and should therefore attract postage due. I feel sure someone will try that now, so please let me know the outcome!



Because the counter printer imprints details of the issuing office, it is possible to identify examples issued on Alderney and Sark. Cancellations will also indicate on which Island they were used. The two examples illustrated above were issued by the L'Islet Sub-Post office, cancelled Guernsey, and Alderney Sub-Post office, cancelled Alderney. My thanks to Bob MacDonald for providing the latter.

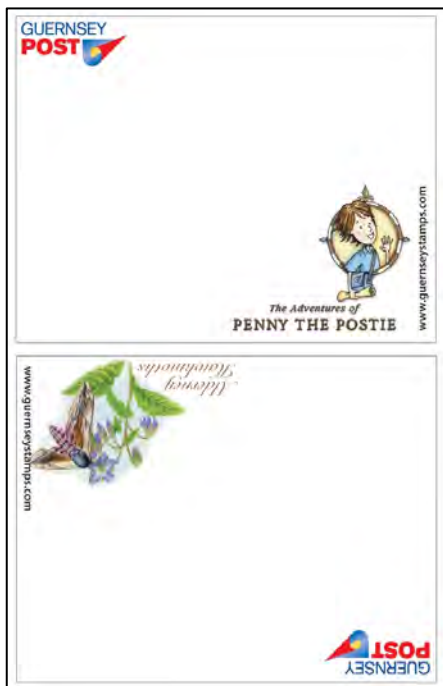
At the time of writing, November 2013, there have been seven issues each comprising two label images. Four of the images have been used twice so there are a total of ten different illustrated types. Guernsey Post prepared the artwork in-house using vignette images from Guernsey special issues. Image and issue dates with descriptions follow:

Please note that all the illustrations in this article have been reduced in size by approximately 22%.

June 2010 – Illustration from the Europa set: Children’s books – Guernsey Stamps new book character Penny the Postie, from *Penny and the Pirates* book (with website shown in blue), coupled with Sherlock Holmes.



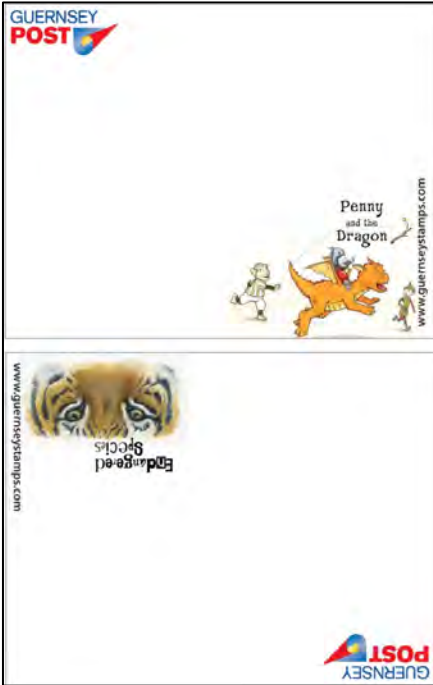
November 2010 – Illustration from the Europa set: Children’s books – Penny the Postie (same illustration, but with website in black), coupled with 150th Anniversary of J. M. Barrie, showing Captain Hook from *Peter Pan*



April 2011 – Illustration from the Europa set: Children's books – Penny the Postie (with website lettering in black) repeated, coupled with Alderney Hawkmoths.

January 2012 – Illustration from the Europa set: Forest, a character from the second Penny the Postie book – *Penny and the Dragon*, coupled with a repeat of Alderney Hawkmoths.



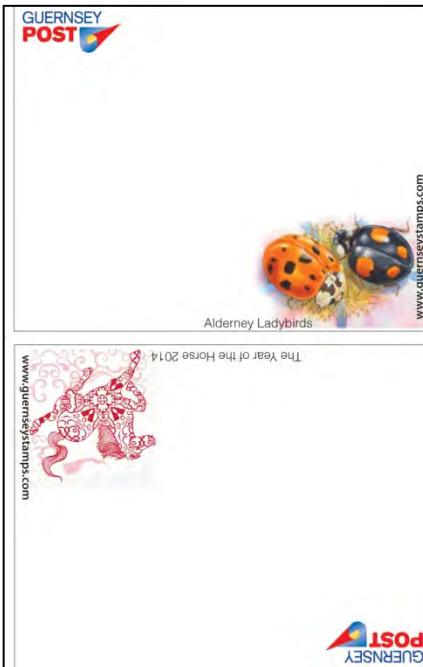
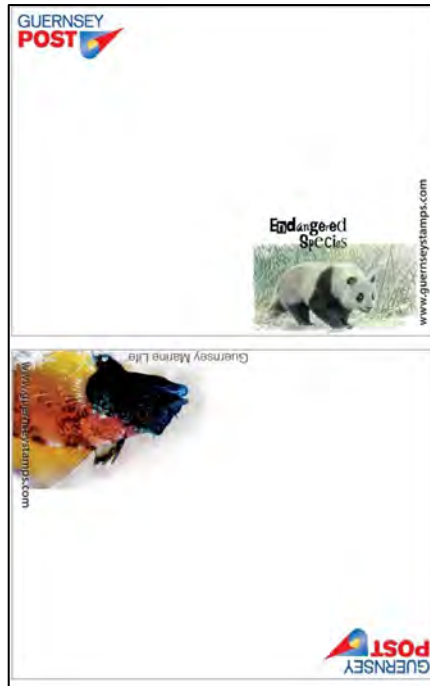


May 2012 – Illustration from Europa set: Forest, repeated and coupled with Endangered Species: Bengal tiger.

November 2012 – Illustration from Endangered Species: Bengal tiger repeated and coupled with The War of 1812 showing Sir Isaac Brock.



May 2013 – Illustrations from Endangered Species set: Giant Panda coupled with Guernsey Marine Life showing a black-face blenny.



Prior to going to press I have been advised that an eighth pair of labels is being prepared which will be introduced from summer 2014 as each office runs out of current stocks. The illustration shows Alderney Ladybirds and The Year of the Horse 2014.

CIRCULATING EXCHANGE PACKETS

**New material that you may wish to sell is
urgently needed for the Packets.**

**In particular your spare or duplicate
Occupation and stamp related material.
Send it priced for circulation to our Packet Secretary:**

**John Triggs,
'Sunnyside', La Gibauderie,
St Peter Port, Guernsey, GY1 1XF.
Tel. 01481 725847. Email. jtriggs@cwgsy.net**

PAST JOURNALS and BULLETINS.

The Society has a stock of past issues of the **Bulletins** and the Journal '**LES ILES NORMANDES**'. These are available at £1.00 each, and the Bulletins at £0.50 each, postage and packing is extra. The indices to both the Bulletins and Journals can be found on the website; **www.ciss1950.org.uk**

To enquire about past issues please contact Moira Edwards at 86, Hall Lane, Sandon, Chelmsford, CM2 7RQ, or email:

membership@ciss1950.org.uk

The postal relationship between the Channel Islands and France

by Tony Peters

My question in this context is who made or received the profit on the mails passing between the Channel Islands and France? I am thus showing some letters between the Channel Islands and France and for each letter I give an alternative calculation of the postage rate.



Letter from Rio de Janiero dated 22.06.1833 to St. Malo via the Jersey Agent Amiraux Le Breton & Co.

The letter was received at St. Malo on 06.09.1833 where it was struck with the datestamp and the 'GRANDE BRETAGNE par...' on arrival and 6 D for the shipping fee from a British province.

Postage rate calculation:

Shipping charge	6 D
French Inland postage rate for 7,5 – 10 g, up to 40 km:	3 D
Total:	9 D

The endorsement from the agent shows that he was resident in Jersey therefore it was classified by the St.Malo Postmaster as from a British Province thus applying a 6 D postage rate for the shipping charge. If he had read the complied endorsement and looked on the back where there

was no British postmark, he should have known that the letter did not originate from a British Province, so he had to calculate under the “Outre-Mer” rule = 2 D shipping charge. The total was now 5 Decimes.

The next letter is from a familiar correspondence. I think that the writer wanted to show his national thinking. If he didn’t write “Angletterre” in the address, the letter was delivered via Granville or St.Malo.



Letter from Rouen, dated 08.08.1836, via London, to Guernsey

On the front it shows the departure datestamp, dated 08.08.1836 and the rectangular boxed **BRITISH/FOREIGN** and the manuscript charge 2/6d. On the back are the London transit marks, dated 11.08.1836. The manuscript “9” shows the French inland postage with the shipping fee to Dover (as the Convention states), which was not paid. The 2/6d shows the postage which had to be paid on arrival at Guernsey.

Postage rate calculation:

Rouen – Dover	9 D = 9 d
Dover – London – Southampton – Guernsey	<u>21 d = 1/9d</u>
Total:	2/6d

Alternative calculation:

Rouen – Granville or St.Malo, till 300 km	7 D = 7d
St.Malo – Guernsey	<u>2d</u>
Total	9d

The following letter was posted at the Jersey Post Office and delivered by the GPO over the principal exchange. As the Convention of 1836 shows, a local exchange was not made. The General Post Office preferred this as the ordinary route gave them a higher profit.



Letter from Jersey, dated 27.11.1840, to Cognac via London and Paris.

As the front shows, the postage of 10d to the frontier was paid by the sender – London-Paid-mark dated 30.11.1840 and P-F mark (Jersey received a *P-F*. mark in circle in 1843).

The French Post Office calculated 14 Decimes for the unpaid letter from Calais to Cognac, where it arrived on 04.12.1840

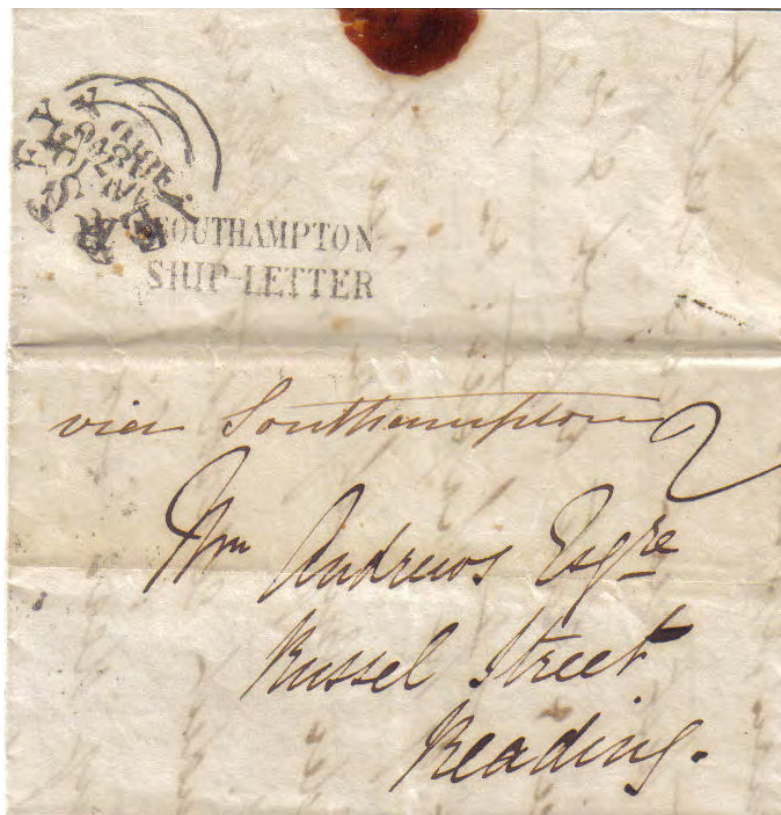
Postage rate calculation:

Route via GPO

Jersey – London - Calais	10 d
Calais – Cognac	<u>14 D / d</u>
Total	24 D / d

Alternative via French relation:

Jersey – St.Malo	2 d / D
St.Malo – Cognac	<u>8 D / d</u>
	10 D / d



The last letter above was written in Dinan, France on 07.08.1840, but posted at Jersey for Reading and routed via Southampton, charged at the then inland rate of 2d.

I have to say that it would seem the sender had the best information or knowledge as no one could say if he or a friend or an agent had posted the letter at Jersey, they must have known the new postage rules of the General Post Office at that time as from January, 9th 1840 the new 1d inland postage rate was introduced.

Alternatively if the sender had posted the letter at the French Post Office the calculation of the rate would have been:

Dinan – Dover (Brit. Province rule): 11 D / d

(which had to be paid by the sender)

Dover – Reading* 1 d unpaid = 2d

Total: 13d or 1/1d

* I'm not sure if the 1d postage rate was also valid on foreign mails?

Channel Islands' mails via Weymouth 1794 – 1845

by Ron Brown

(Continued from the last Journal)

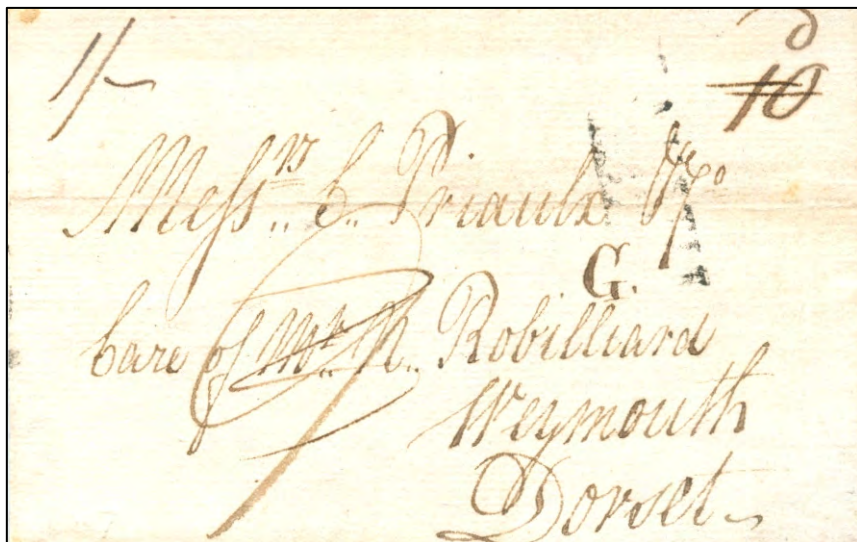


Fig.20

Another example of a Bye Boat letter is shown above in Fig.20 clearly indicating the code letter 'G' enabling identification as a letter intended for

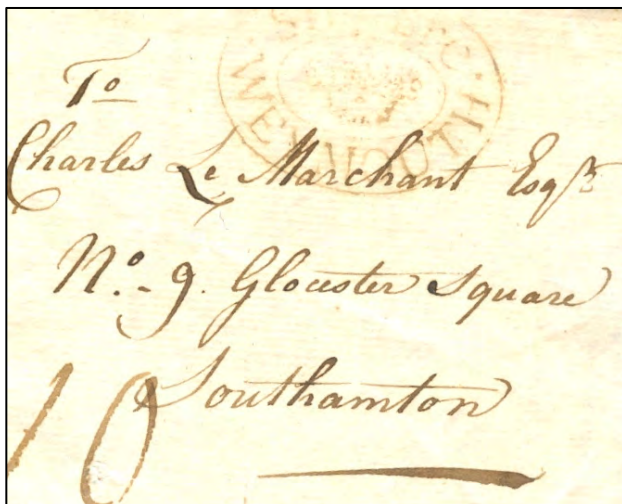
Guernsey. Rated at 1/- being the 1907 inland rate from Mevagissey to Weymouth of 10d plus the Bye Boat fee of 2d and an Agents fee of 1d.

The Post Office introduced a second weekly packet in 1807 thus reducing the need for the bye-boat service. By 1810 Nicholas Robilliard was experiencing financial difficulties as a result of smuggling problems and debt collection and in that year was declared bankrupt

LETTER SENT BY PRIVATE SHIP

Figure 21 here is an entire letter dated 31 March 1801 from Guernsey to Southampton which could have been sent for less postage by private ship direct to Southampton or alternatively by Packet to Weymouth.

Fig.21.



However the sender chose to send the letter by private ship to Weymouth and as such it was treated as a ship letter and received an oval **Ship Lre/WEYMOUTH** with crown handstamp. When this letter was written on 31 March 1801 the Weymouth Packet only sailed once a week and mail was often sent by private ship rather than wait for the weekly Packet. In 1807 the Packet sailings were increased to twice weekly and by 1829 to three times weekly in the summer months from April to September.

From 1799, with the opening of the Ship Letter Office in London, the 4d ship letter rate was confirmed and the Master's gratuity was raised from 1d to 2d thus the charge for the above letter in Fig. 21 was Inward Ship Letter rate of 4d plus the inland letter rate of 6d from Weymouth to Southampton giving an endorsement of 10d.

DISPUTE BETWEEN WEYMOUTH PACKET OFFICE AND THE JERSEY HARBOUR COMMITTEE

Figure 22 below is an entire letter written 31 March 1840 from the 'Superintendent of H M Packets, Weymouth' to 'The Chairman of the Committee for Piers and Harbours, St Heliers' voicing his concern about the berthing of merchant vessels in the berth 'set apart' for the Packet.

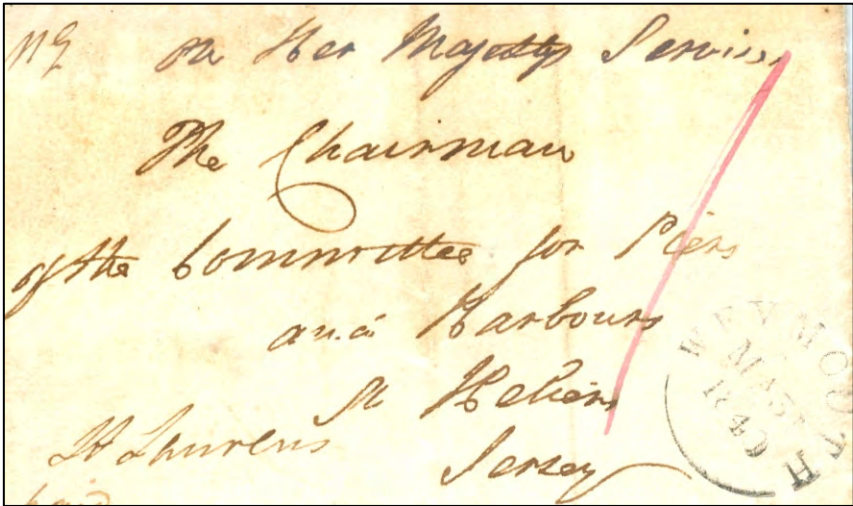


Fig. 22.

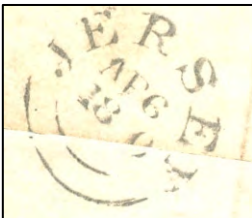


Fig. 23

The diagonal red slash on the right of the letter denotes the 1d post paid as endorsed at the bottom Pd and the WEYMOUTH arc datestamp beside is 31 March 1840. On the reverse is the Jersey double arc 6 April 1840 indicating an unusually long journey time between Weymouth and Jersey of some six days.

*Her Majestys
Packet Office Weymouth
March 31st 1840*

Sir,

The Commander of HMP Wildfire has given me a copy of the Act passed by the Committee of Piers and Harbours in the island of Jersey on the 25th instant, directing their Harbour Master to place merchant vessels who may arrive at the berth set apart for Her Majestys vessels, as well as those outward bound, thus materially altering the act of the 9th May 1834. Before I lay this circumstance before the Lords Commissioners of the Admiralty will you be pleased to inform me to what extent the new Act is likely to deprive Her Majestys vessels of the accommodation heretofore afforded them, and which is essential to their safety.*

I am

your very obedient servant

Agnew Stevens

Superintendent of H M Packets

*To the Chairman of
the Harbour Committee, Jersey*

**The 'Wildfire' was originally named 'Watersprite' and was a 162 ton paddle steamer built in 1826 and re-named by the Admiralty in 1837.*

Ph Marett, President Committee of Harbours replied on the 11th April 1840.

'In answer to your letter of the 31st Ultimo I beg to inform you that the Act of the Committee of the 25th was passed on the application of the Proprietor of a large Vessel which arrived with a valuable cargo and was obliged to remain at anchor in the roads from the want of sufficient water in any part of the Harbour but in the berth originally set apart for her Majesty's Vessels and the Committee considered that a vessel arriving on a neap tide was of the two better entitled to take advantage of the berth than vessels outward bound, as the former were frequently forced to remain for several days in the exposed roadstead to the risk of the loss not only of the valuable property but also of the lives of the Crews in the event of bad weather. It was further observed that the present construction of the Steam vessels is so different from what it was in 1834 that those vessels can now take the ground without requiring a Key to support them, it is not the

intention of the committee that Vessels either inward or outward bound should be placed in the reserved berth except in cases of necessity when no other accommodation can be afforded them'.

*Agnew Stevens Esq
Superintendent of H M Packets
Weymouth*

*I am Sir
Your Most obedient Servant
(Signed) Ph Marett
. President Committee of Harbours*

The outcome of the dispute is not known.

WEYMOUTH TO ST MALO



Fig. 24.

Figure 24 is an entire letter dated 2 November 1833 originally addressed to Jersey, endorsed in red ink **P 3** and at the bottom in black ink *Post paid* and carried on the Weymouth Packet. On arrival in Jersey the letter was re-addressed to St Servan (just to the south of St Malo). On arrival at St Malo the two line ship letter mark **GRANDE BRETAGNE/PAR ST MALO** was applied and the letter date stamped ST.-MALO (34)/6 NOV/1833. The black **6** is a French mark signifying unpaid postage due.

UNIFORM POSTAGE



Fig. 25.

Uniform postage was introduced on 5 December 1839 at the rate of 4d. Red ink was used to indicate pre-payment and black ink for unpaid mail, which was charged at the same rate. The 4d rate applied for mail weighing up to a ½ ounce. Uniform postage was of special benefit to the Channel Islands as, prior to uniform postage, Channel Islands mails were charged 3d Packet rate in addition to British mileage rates.

Figure 25 above is an entire letter dated stamped GUERNSEY DE 30/1839 and also backstamped in London on 1 January 1840. The uniform

fourpenny postage only lasted until 9 January 1840, just 35 days, when it was replaced by uniform penny postage. Less than ten items of mail are known from the Channel Islands used during the uniform fourpenny postage period.

Uniform penny postage was introduced on 10 January 1840 and on 6 May 1840 the world's first postage stamp, the 1d black, was issued. The stamps were not available for sale in the Channel Islands until June 1840.



Fig. 26.

Figure 26 above is an entire letter dated 15 June 1840 from Guernsey to Liverpool with the 1d black cancelled with an orange-red Guernsey Maltese Cross handstamp. On the reverse side of the letter is a first type **GUERNSEY** double arc datestamp of JU 15/1840 together with a red London transit mark and a red Liverpool arrival mark.

DEMISE OF THE WEYMOUTH PACKET

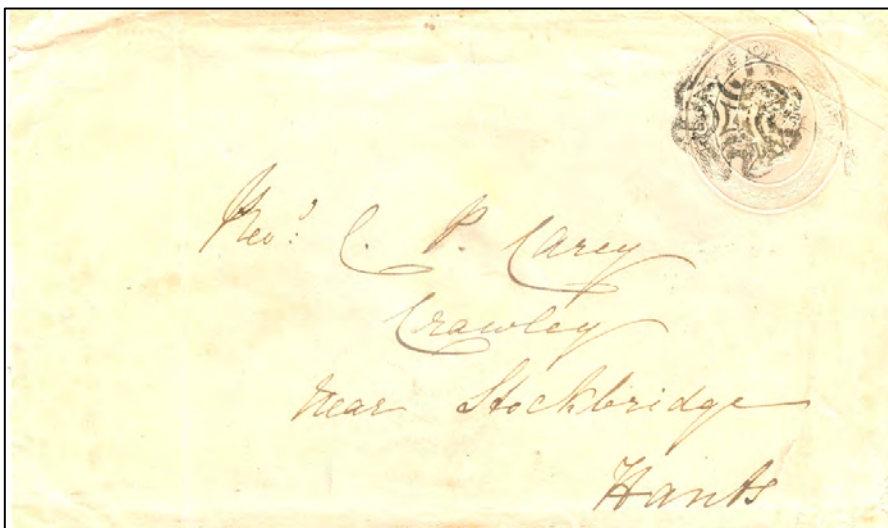


Fig. 27.

With the introduction of uniform 1d postage and the opening of the railway between Southampton and London the time for mail to reach London from the Islands was considerably reduced. The consequence of these changes was that the volume of mail via Weymouth declined.

Before the opening of the railway between London and Southampton mail between London and Weymouth was transported by horse drawn mail coaches which took the best part of a day. The rail connection between London and Southampton was completed on 11 May 1840 which reduced the journey time to London to three hours, hence a day could be saved on the journey between London and the Channel Islands. Immediately on the opening of the rail connection the Post Office allowed mail to pass through Southampton as well as Weymouth. It was stipulated that such mail should be endorsed 'per private steamer via Southampton'. In later years this often appeared in abbreviated form.

The decline in the volume of both mail and passengers in 1840, together with the growth of Southampton as a major port and the loss of the advantage of prevailing winds for sailing ships no longer a factor after the introduction of paddle steamers in the 1830's, brought about the closure of the Weymouth Packet service in 1845 thus bringing to an end a colourful period in the Channel Islands mail service from 1794 to 1845.

Figures 27 above and 28 below are two letters from the same correspondence. The first would have been sent on the packet to Weymouth and the second to Southampton as it is endorsed 'via Southampton'.

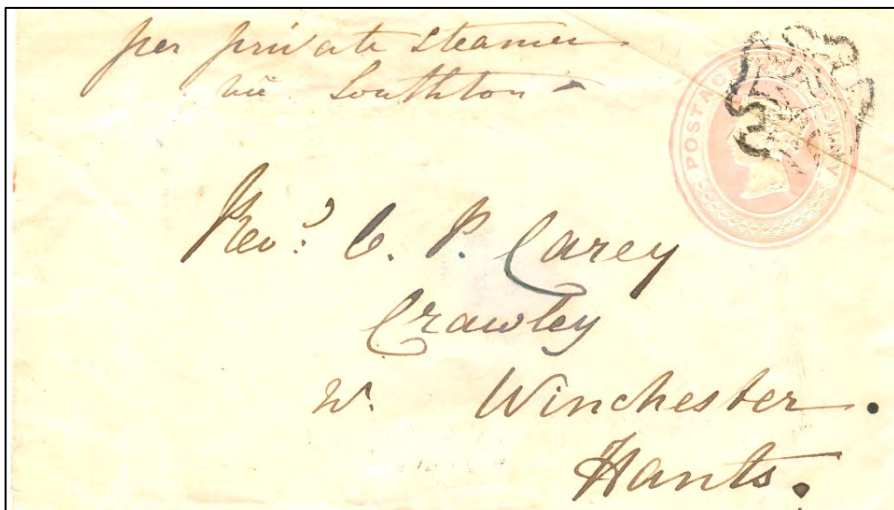


Fig. 28.

Sources and acknowledgements

Stamps and Post History of the Channel Islands – William Newport – Heinemann Philatelic Series 1972

United Kingdom Letter Rates Inland and Overseas 1635-1900 – Colin Tabeart – H H Sales - 2003

Letter Forwarding Agents of Great Britain handling Channel Island letters 1673-1855 – David Gurney FRPSL – The Rossiter Trust 2011

The Weymouth – Guernsey 'Bye-Boat' – John Simpson and Leo Mayr – CISS Journal 1983

Mail Ships of the Channel Islands – Richard Mayne – Picton Publishing 1971

Mail per private steamer via Southampton – Alan Moorcroft FRPSL – CISS Journal

I wish to thank Colin Tabeart for his invaluable assistance with regard to the various postal charges, Alan Moorcroft FRPSL for his advice and knowledge with regard to the subject and our ever patient Editor David Gurney FRPSL.

VATICAN APOSTOLIC DELEGATION

by Gerald Marriner FRPSL

During World War 1 the Vatican established a limited communication service relating to military personnel. This service was expanded greatly during World War II. A special message service and communication network was established at the Vatican Office of Information. This service initially sent messages over the Vatican radio. A written message scheme followed which connected people in over 50 countries linking prisoners of war, civil internees and separated families. Mail from this service appears to be extremely scarce and little information has been recorded in print.

The Apostolic Delegation had offices in many countries including London which was situated at 11 Cavendish Square and was known as The Vatican War Enquiry Dept.

Some time ago I illustrated a message form from the Apostolic Delegation in London addressed to Guernsey ~ shown below. This was titled

‘DELAGAZIONE APOSTOLICA DI LONDRA’ and has a reply on the reverse and could have been forwarded in an envelope.

However as the form is inscribed in Italian, I believe that the message would have been transferred by radio to the Vatican Office of Information in the Vatican. It would then have been transcribed on to the special form printed in Italian. How would this have then been forwarded to Guernsey?

My reason for this theory is that I have seen a form sent in English from the London Apostolic Delegation to Bexley Heath in 1943. This was headed ‘SECRETARY OF STATE TO HIS HOLINESS’ and had been posted in a plain envelope with a

73
DELAGAZIONE APOSTOLICA DI LONDRA
6. Oct 1941
Si desiderano notizie del
(New wanted of)
Mrs. C. O'DONOVAN, "Eveleigh",
Braye Road, Guernsey.
and
their brother,
Rev. Bro. Celsus,
St. Joseph's College,
Beulah Hill,
London, S.E. 19.
e si prega far sapere che
(please inform that)
(Voltare per la risposta).

red London circular PAID handstamp, (1).

English messages were often accompanied by a small instructional leaflet, entitled 'VATICAN WAR ENQUIRY DEPT.' 11, Cavendish Square, London. The message on the leaflet read ~ 'The enclosed message was collected by a representative of His Holiness The Pope and is forwarded to you on behalf of His Holiness by Archbishop Godfrey, the Apostolic Delegate in Great Britain'. (1)

I have recently acquired a similar plain cover dated June 1943- unfortunately with no contents which I illustrate below.



This rare cover was addressed to Mr Gosselin in St Clements, Jersey It has the rectangular framed cachet – '**PRISONER OF WAR DEPARTMENT/ APOSTOLIC DELEGATION / LONDON**'. This was then posted in London receiving a red meter PAID mark. As there was no direct postal communication service with the Channel Islands, the cover then received a framed cachet – '**NO SERVICE/ RETURN TO SENDER**'. Has any other member got a similar cover in their collection or is this unique? Why did the Delegation try to post this to Jersey by normal postal means? Was this included in a batch of similar envelopes destined for addresses in England by mistake? Or did the Delegation not realise that there was no direct service? Or did someone just think that Jersey was IN England?!

In my other collecting area – Belgian Congo – I have also come across three scarce World War 2 covers which have been sent from the Apostolic Delegation in Leopoldville, Belgian Congo. For completeness of my story I illustrate the front and reverse of one such cover



This cover was sent internally from Leopoldville to Jadotville. Unlike the English Delegation, it can be seen that the Apostolic Delegation in Leopoldville had specially printed envelopes for their service. Unfortunately no message was enclosed.

To show that this message service was wide spread I have found reference to a message form from the Apostolic delegation in Palestine sent to Hungary in 1942. This form mentions that replies to messages can be made via the Vatican Radio.

Ref – (1) Smithsonian Postal Museum lecture - September 2008 by Gregorio Pirozzi

PAST JOURNALS and BULLETINS.

The Society has a stock of past issues of the **Bulletins** and the Journal '**LES ILES NORMANDES**'. These are available at £1.00 each, and the Bulletins at £0.50 each, postage and packing is extra. The indices to both the Bulletins and Journals can be found on the website; **www.ciss1950.org.uk**

To enquire about past issues please contact Moira Edwards at 86, Hall Lane, Sandon, Chelmsford, CM2 7RQ, or email:

membership@ciss1950.org.uk

DISPOSAL OF YOUR CHANNEL ISLANDS' COLLECTIONS

If you or your relatives wish your collection to be sold due to change of interest, incapacity, or death the Society could assist you by arranging for its disposal within the C.I.S.S. through the Society's auctions and/or circulating Packets.

Benefits can be:

1. Best realisation of value to owner or dependents.
2. Opportunity for members to obtain items reasonably.
3. Society income enhanced with commission charged at 10% on sale by auction or packet plus 2% insurance.

Several collections have been successfully sold in this way in recent years to the benefit of the owners.

LOCAL ISSUES OF THE CHANNEL ISLANDS

HERM, JETHOU, LIHOU, BRECQHOUE,
COMMODORE SHIPPING COMPANY,
ALDERNEY PARCEL DELIVERY,
ISLE OF SARK SHIPPING CO,
FRENCH C.I. & SMALLER ISLANDS

**REGULAR RETAIL LISTS
& AUCTIONS SENT FREE**

JON AITCHISON

Old Tithe Hall,
Start Hill, Near Bishop's Stortford,
CM22 7TF, Great Britain.

Telephone: 01279 870488

Email: britishlocals@aol.com



Channel Island Postal BidSales

Gategny Chambers, 1st Floor, Bosq Lane, St. Peter Port, Guernsey, GY1 2LP.

Tel: 01481 727353/Fax 01481 725981 Email: dtomlin@cipostalbids.co.uk

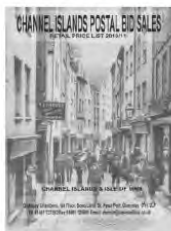
Postal Auction catalogues are
produced 5 times a year
and include a wide variety of
Postal History and stamp
issues. Including specialised
listings.



We offer a wide range of Channel Islands and Isle
of Man stamps in our Retail Catalogue.

Please visit our Website:

<https://www.cipostalbids.com> for all these and
much more including Special Offers of rare and
scarce items. Catalogue available by post on
request.



A hand sewn Occupation postage due cover.

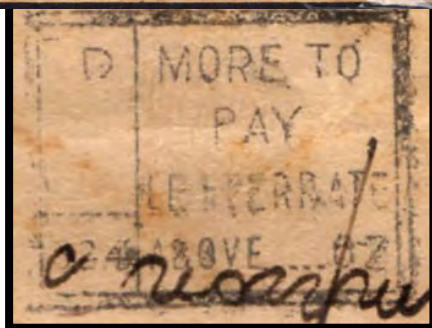
by Gerald Marriner FRPSL

An interesting local hand made cover posted on the 28th July 1944 to St Sampsons with the sides stitched together on a sewing machine with a piece of cotton left hanging off the cover.



The cover has been underpaid by a 1d – hence the **2d/324** surcharge in black ink and the impression of the boxed Guernsey handstamp '**MORE TO / PAY / LETTER RATE / ABOVE.....OZ. '**

This is a very scarce combination of such marks used in the period of the German military Occupation of the



Island and is listed as **R** on page 222 of the German publication **KANALINSELN** by Leopold Mayr and Michael Wieneke.

64th ANNUAL GENERAL MEETING REPORT

Held at No. 41 Devonshire Place, London on 5th July 2014 at 2.00pm
Present: Chair was taken by Dave Edwards with 21 members and one guest in attendance.

- 1. Apologies:** M. Bailey, A. Chappell, B. Coles, P. Grimley, A Holyoake, P. Malkin, T. Merson, M. Moody, R. Osborne, K. Raymond, P. Saunders, S. Wells, G. Wood, L. Woolf, B. Young and R. Young.
- 2. Minutes** of the 63rd AGM as published in *Les Iles Normandes* Vol. 32, No.3, pp 34-38 were proposed for adoption by J. Hurst and seconded by J. Triggs and passed unanimously.
- 3. Matters arising** Action taken was circulated and accepted by members present.
- 4. Officers' Reports**

These had already been circulated in the preceding Journal apart from the Membership Secretary's Report and Competitions Secretary's Report and hereby given below:

- 4.1** Membership Secretary, Moira Edwards, reported on the 25th April 2014 that membership stood at 288 persons (192 UK members, 48 Channel Islands members, 26 European members and 22 Rest of World members). Moira was able to update these figures which now stand at 292 members (195 UK, 48 CI, 27 Europe and 22 Rest of World).
- 4.2** Competitions Secretary, Gavin Wood, reported that entries for the various competitions were low, with seemingly the same members entering the competition year on year. Class winners can be viewed on the Society's website. Following decisions made by the committee the 'Society plate for local issues' and 'Absent Members Competition' will be dropped forthwith. It was also agreed to change the marking criteria in line with the Association of British Philatelic Societies standards except for

the Postcards Competition that will remain as previous. It was also agreed at committee that winning entries should be encouraged to enter national competitions and that the CISS would sponsor a one off, first time entry for a single frame entry to the sum of £15.

4.3 Treasurer's Report This had been previously circulated in the *Les Iles Normandes* and showed an excess of income over expenditure of £109. Gerald Marriner proposed the adoption of the accounts. This was seconded by John Hurst and accepted unanimously.

4.4 Book Sales Richard Flemming reported that book sales continue at a steady rate, with sales totalling £183. Stocks of some of the books was low although he still had large stocks of the *Red Cross Message Service, Jersey and Guernsey Slogans* and *Islanders Deported-Part 2*. He was also able to report that he was now in receipt of the new stock of binders for *Les Iles Normandes* and that they would be on sale at £5.50 plus P&P.

4.5 Archivist Mark Bailey reported that the archive holding continued to increase with each new issue of *Les Iles Normandes* and the philatelic bulletins issued by Jersey and Guernsey Post Offices. In addition, a number of auction/sales catalogues relating to Channel Islands material have been added to the archive. A list of the content of the archive is now available on the Society's website.

5. Election of Officers

		Proposer	Secunder
Chairman	Dave Edwards	R. Bartlett	G. Cory
Secretary	Richard Flemming	D. Edwards	G. Marriner
Treasurer	Robert Porter	R. Flemming	J. Hurst
Editor	David Gurney	D. Winnie	J. Triggs
Packet Sec	John Triggs	G. Marriner	D. Gurney
Auction Sec.	Nick Stuart	R. Flemming	G. Wood
Membership Sec	Moirra Edwards	D. Somerville	R. Harris

Competition Sec Gavin Wood
Advertising Sec Steve Wells

G. Marriner R. Flemming
D. Winnie A. Moorcroft

At this point in the meeting, Alan Moorcroft, President, CISS presented Gerald Marriner with an engraved tankard in recognition of the many years of service that Gerald has given to the CISS as Secretary, Auction Secretary and in other supporting roles.

6. Joan Flood Salver

This was not awarded this year

7. Any other business

Jon Aitchison asked the Membership Secretary how the membership figures for 2014 compared to those of 2013. The response was that there were six less members than 2013. Jon Aitchison also thanked the committee members for making the changes to the Society's annual competitions. Jon also asked if overseas members would be able to enter other classes for the annual competitions. It was confirmed that overseas members would be able to submit photocopies of their entry/entries for judging. It was also confirmed that the postcard competition would remain as current rules dictate.

7.1 David Laurillard asked whether we could have a non-Channel Island 'philatelic' event instead of the usual Channel Island related meetings. It was agreed by the Chairman that this would be considered at the next committee meeting.

7.2 Gerald Marriner stated that other philatelic societies issue membership cards with dates of meetings, committee members, etc and asked if it was possible for members of the CISS could be issued with the same. The Chairman confirmed that this would be considered at the next committee meeting.

7.3 Gerald Marriner detailed plans for the forthcoming CISS weekend to be held in Guernsey at the Peninsula Hotel, 24-26th April 2015, details of which would be published in the September edition of *Les Iles Normandes*.

8. There being no further business the meeting was closed at 15.20.

9. Date of next Annual General Meeting is Saturday, 11th July 2015.
Richard Flemming Secretary

Unrecorded Midget Parcel Post Labels

by David Winnie

Shown below are two examples of anonymous or midget type Parcel Post labels in an upright rouletted format.



The first is for Braye Road where the words **PARCEL POST** are 25mm in length with thick lettering. This label was used on the 28th August 1948.

The second is for Pleinmont Road in a slightly different format, where the words **PARCEL POST** are 29mm in length with much thicker lettering.

This label was used on the 15th November 1963.

These labels were only used infrequently in the Channel Islands. As such, very few have survived and examples from these two Sub-Offices are unrecorded to date.



C.I.S.S. PUBLICATIONS

Our current stock of merchandise at
reasonable prices.

However postage is extra and will be invoiced.

Write to: C.I.S.S. Book Sales at 64, Falconers Green, Burbage.
Hinckley, Leics. LE10 2SX or **Email** – rflemming@talktalk.net

- | | |
|--|--------|
| 1. The Channel Islands Sub-Post Offices and their Postmarks (292pp) | £6.00 |
| 2. The Post Office in the Smaller Channel Islands (154pp) | £12.00 |
| 3. The Postal History of the Guernsey Sub-Post Offices (265pp) | £10.00 |
| 4. Red Cross Postal Message Scheme with the Channel Islands
during the Occupation 1940-45 (389pp) | £8.00 |
| 5. Islanders Deported Part 1 (226pp) ex Library copies | £10.00 |
| 6. Islanders Deported Part 11 (246pp) | £4.00 |
| 7. A Study/Check List of Jersey Definitives/Booklet Panes 1969-1997 | £3.00 |
| 8. The Postal History of the Jersey Sub-Post Offices (376pp) | £15.00 |
| <u>(This book is reduced from £27 to £15 as staples are slightly rusting)</u> | |
| 9. Registered Mail of the Guernsey Sub-Offices 1968-1990 Vol 2 | £3.00 |
| 10. Registered Mail of the Guernsey Sub-Offices 1968-1990 Vol .3 | £3.00 |
| 11. Channel Islands Revenues (Fifth Edition) – 1997 | £6.00 |
| 12. Jersey & Guernsey Slogan Postmarks of the 20 th Century (85pp) | £7.50 |
| 13. Boat Services to the Smaller Channel Islands (2 nd edition) | £20.00 |

Also available:-

Binders for 'Les Iles Normandes' holding 12 issues @ £5.50 each or
three for £15.00 plus postage.

Society Ties: In blue or maroon with CISS motif @ £8.00 each plus postage.

Payment may be made by Visa/Access/Mastercard. A service charge of 5% is made
in accordance with the Credit Card (Prices Discrimination) Order.

Please quote your card number, expiry date and card settlement address.

**Please do not send payment until you receive an invoice
for the cost of your order plus the postage and packing.**

WARDROP & COMPANY LIMITED

Philatelic Insurance Specialists

**The insurance for the serious collector providing
peace of mind at surprisingly low cost**

What is covered - Stamps, covers, envelopes, postcards, albums, philatelic literature, stamp boxes, and other articles of philatelic or postal history interest

Insurance against –All risks of physical loss or damage to property excluding wear, tear, gradual deterioration, moth, vermin, and damage or deterioration of any article directly caused while being worked upon or undergoing any process

Scope of cover – Anywhere UK (subject to prior advice of transits or locations other than the main dwelling for sums over £15,000) including postal or accompanied sendings

Basis of valuation – Market value

Cost –Anywhere UK	£3.75 reducing to £3.00 per £1,000 for higher sums
Normally Bank	£2.50 per £1,000 (30 days withdrawal any one year)
Bank only	£1.25 per £1,000

For a personal quotation and prospectus write to us at the address below, telephone **01376 563764**, email john@wardrop.co.uk or visit our website www.wardrop.co.uk for more information including lots of links to other philatelic sites and an online proposal form.

**Wardrop & Co Ltd
PO Box 772, Coggeshall
COLCHESTER CO6 1UW**

Authorised and regulated by the Financial Conduct Authority

FORTHCOMING NEW STAMP ISSUES – 2014.

GUERNSEY POST

6th November 2014 Guernsey Christmas stamps

Set of 7 stamps	£4.09
First Day Cover	£5.29
Presentation Pack	£4.99

11th November 2014 (first of a five part series, one a year)

Stories of The Great War

Set of 6 stamps	£3.73
First Day Cover	£4.93
Presentation Pack	£4.63
Prestige Booklet	£14.92

ALDERNEY

6th November 2014 Christmas stamps

Set of 7 stamps	£4.09
First Day Cover	£5.29
Presentation Pack	£4.99

The Christmas stamps have been designed by local school children this year and are really delightful!

JERSEY POST

15th September 2014 New Jersey 350 Years

Set of 6 stamps	£4.07
First Day Cover	£5.22
Presentation Pack	£5.22
Souvenir Sheetlet	£4.07
First Day Cover	£5.22
Presentation Pack	£5.22

9th October 2014 Oyster Fishing

Set of 6 stamps	£4.07
First Day Cover	£5.22

Presentation Pack	£5.22
Miniature Sheet	£2.00
First Day Cover	£3.15
Presentation Pack	£3.15
Prestige booklet	£14.21

30th October 2014 Pirates & Privateering

Set of 4 stamps	£3.11
First Day Cover	£4.26
Presentation Pack	£4.26
Souvenir Sheetlet	£3.11
First Day Cover	£4.26
Presentation Pack	£4.26

12th November 2014 My Moments

12 x self-adhesive NVI stamps	
6 x local @ 46p each and 6 x UK @ 56p each	
Set value	£6.12
First Day Cover	£7.27
Presentation Pack	£7.27

27th November 2014 Santa Claus

Set of 8 stamps	£5.27
First Day Cover	£6.42
Presentation Pack	£6.42

Due to the loss of LVCR, Jersey Post now collects the appropriate rate of VAT on the various products at the point of sale and pre-pays HMRC on all orders entering the UK.

Post & packing charges CI - £1.85, UK - £1.94 (incl. VAT), Europe - £2.00 and the Rest of the World - £3.00

Note: This is the basic charge only.

Also, please be aware that from 2013, Jersey Post will be charging 5% GST to Jersey customers on CTO stamps (and complete CTO sheets) only.

CHANNEL ISLANDS

Postal History * Occupation * Revenues
Herm * Alderney * Sark * Jethou * Lihou
Independent * Errors and Varieties

Postcards * Ephemera from all periods

**ALL TO BE FOUND IN MY REGULAR
POSTAL AUCTIONS AND PRICE LISTS**

Send for the latest catalogue today (free of charge)
and see for yourself!

WINDSOR STAMPS

1, Sausmarez Street, St. Peter Port,

Guernsey, GY1 2PT. C.I.

Tel: (01481) 725209

VISITING GUERNSEY?

THEN VISIT THE WINDSOR STAMPS

“COLLECTORS CENTRE”

1, Sausmarez Street, St. Peter Port, GY1 2PT

Tel: (01481) 725209

*Stamps and Postal History * Postcards
Coins and Banknotes * Cigarette Cards
Antique Prints * Engravings * Maps, etc., etc.*

WELL WORTH A VISIT!

J. L. MORRIS (Insurance Brokers) LTD.

Manor House, 1 Macaulay Road, Broadstone BH18 8AS

01202 642840 info@jlmorris.co.uk

www.jlmorris.co.uk



CISS member David J Morris ACII Chartered Insurance Broker runs his Insurance Broking business giving concern to the quality of the cover and the quality of the insurer, above all else. As not all insurances provide the same benefits it makes sense to obtain independent professional advice to assist you in making your decision as to which policy is right for you.

With claims being handled by David and his colleagues – in conjunction with the insurance company – you will receive a quicker and more efficient settlement than if you were left to your own devices.

PROFESSIONALLY ARRANGED and MANAGED INSURANCES – from the time of the first enquiry to your claim being concluded

Some areas of speciality:

Home insurances – to include your philatelic and other collections

Charity and not for profit – from philatelic societies to amateur dramatics

Community radio stations – David's keen knowledge of the UK radio scene helps!

Let properties

- Commercial landlords
- Self catering properties
- Long term let (AST)

Unoccupied properties – commercial and residential

Regulated and authorised by the Financial Conduct Authority (Register Number 306499)