



**CHANNEL ISLANDS  
SPECIALISTS' SOCIETY**

September 2015

Volume 34 No.3

# THE CHANNEL ISLANDS SPECIALISTS' SOCIETY

*Founded in 1950*

*for the study of the stamps and postal history of the Channel Islands*

## OFFICERS

**President: Alan N. Moorcroft FRPSL**

*E-mail: anmoorcroft@btinternet.com*

**Chairman: Dave Edwards**

*E-mail: bedenesteda86@btinternet.com*

**Secretary: Richard Flemming**

64, Falconers Green, Burbage. Hinckley. LE10 2SX. *E-mail: rflemming@talktalk.net*

**Treasurer: Robert Porter**

3, Nursery Road, Hoddesdon. Herts. EN11 9LA. *Email: robertwporter@btinternet.com*

**Journal Editor: David Gurney FRPSL**

4, Kingscote, Tree Lane. Plaxtol Kent TN15 0QA. *Email: nangurney1@aol.com*

**Packet Secretary: John Triggs**

“SUNNYSIDE”, La Gibauderie, St. Peter Port, Guernsey GY1 1XF. *E-mail: jtriggs@cwgsy.net*

**Auction Secretary: Nick Stuart**

3, Dudley Road, Walton on Thames, KT12 2JT *E-mail:- nick\_stuart@talk21.com*

**Membership & Subscription Secretary: Moira Edwards**

86, Hall Lane Sandon. Chelmsford. Essex. CM2 7RQ. *E-mail: membership@ciss1950.org.uk*

**Advertising & Press Officer: Stephen Wells**

The Hollies. 42, High Street, Tarring. Worthing. West Sussex. BN14 7NR

*E-mail: press@ciss1950.org.uk*

**Competitions Secretary: Gavin Wood**

Green Looms Farm, Martins Lane, Hargrave, Chester, CH3 7RX

*E-mail: gavinwood1@btinternet.com*

**CISS Internet address:- [www.ciss1950.org.uk](http://www.ciss1950.org.uk)**

Membership is open to all interested in Channel Islands stamps  
and postal history, postcards and ephemera.

Membership application forms can be obtained from the Membership Secretary.

Exchange Packets are circulated regularly. A Postal Auction is held twice yearly.

A 36 page colour Journal is published quarterly.

Meetings are held three or four times a year in London and the Provinces.

### ADVERTISEMENT RATES IN LES ILES NORMANDES

Outside back cover: £40.00. Full page: £30.00. Half page: £18.00

©The Channel Islands Specialists' Society

## SUBSCRIPTIONS and STANDING ORDERS

Will members please note the following points:-

1. Subscriptions, which are due on **1<sup>st</sup> January**, should be sent direct to **Moir Edwards** and **NOT** to any other officer of the Society. A Subscription Invoice will be sent in the December issue of the Journal.
2. All members may now pay by credit card. The amount will be the normal subscription plus 5% for charges. Send your card details including number and expiry date to **Moir Edwards** and to no one else.
3. Overseas members may still pay by STERLING cheque drawn on a U.K. Bank. Non-sterling cheques and non-sterling currency notes will no longer be accepted. Money Orders in sterling currency are acceptable.
4. Members who have not paid by **14<sup>th</sup> February** are assumed to have resigned.
5. Standing Order forms should be **sent by members to their own bank** and not to the Subscription Secretary.

**The NEW Subscription rates for the year 2015 are:-**

COUNTRIES	CLASS OF POSTAGE	ANNUAL SUBSCRIPTION RATES in Pounds Sterling
Great Britain	2 <sup>nd</sup> Class Letterpost	Ordinary Members: <b>£20.00</b> , or choosing an electronic copy of quarterly Journal in place of a posted hard copy; <b>£15.00</b> Juniors, Senior Citizens and Registered Disabled: <b>£10.00</b> , or choosing an E-Journal: <b>£7.50</b> Life Members: <b>£10.00</b> , or choosing an E-Journal: <b>£6.00</b>
Europe	Airmail Printed Paper/ Small Packet Rate	Ordinary Members: <b>£25.00</b> , or choosing an E-Journal: <b>£15.00</b> Life Members: <b>£10.00</b> , or choosing an E-Journal: <b>£6.00</b>
Rest of the World	Airmail Printed Paper/ Small Packet Rate	Ordinary Members: <b>£30.00</b> , or choosing an E-Journal: <b>£15.00</b> Life Members: <b>£10.00</b> , or choosing an E-Journal: <b>£6.00</b>

**PLEASE ADD A 5% SERVICE CHARGE TO ALL CREDIT CARD AND PAYPAL PAYMENTS**

We are pleased to welcome the following new Members:-

2138 Andrew Cresswell, Kent; 2139 David Jones, Sussex; 2140 John Blackwell, Spain.

## CONTENTS

Secretary's Clipboard .....	3
London Meeting Report Saturday 11th July 2015 .....	4
News of Members.....	7
New find – Havre des Pas 24½mm single circle datestamp .....	7
Twice used Inter-Island cover of Lloyds Bank .....	9
April CISS Postal Auction Report .....	10
An early entire letter from British Guiana to London dated 8th July 1840 and forwarded to Jersey .....	12
A forged Channel Islands Distinctive Maltese Cross .....	13
St. Johns, Guernsey Midget Parcel label .....	14
A previously unlisted LL postcard .....	15
Unknown St. Brieux postmark on Channel Islands mail .....	16
Who was General Boulanger? .....	17
A commercial use of a Jersey 1d Arms stamp in Guernsey during the Occupation .....	18
ANGL MB CALAIS - A new find used on the Channel Islands to France route .....	20
A 1943 philatelic postcard from Guernsey to Kiel, Germany .....	22
St.Peters, Jersey Sub-Post Office .....	23
In postal history do not always take things at face value - Noah Le Cras .	24
Guernsey NVIs .....	28
65th Annual General Meeting Report .....	29
An S.S. Vega Mystery .....	33
Forthcoming New Stamp Issues in 2015 .....	34

Whilst every care is taken in the production of this Journal statements expressed in articles in *LES ILES NORMANDES* are the sole responsibility of the author(s) and are not necessarily endorsed by the Editor or by the Channel Islands Specialists' Society neither of whom can be held responsible for the accuracy of the information therein or any consequence arising there from

## EDITORIAL

This is a really packed Journal with some very interesting shorter contributions covering a wide field of interest. I hope members will respond to some of the points raised and provide further information for us.

## SECRETARY'S CLIPBOARD

by Richard Flemming

Thank you to all those members who made the journey to London for the 65<sup>th</sup> Annual General Meeting held at No. 41 Devonshire Place, London with the Minutes appearing elsewhere within this edition of *Les Iles Normandes*. The meeting commenced with an excellent room auction with Nick Stuart acting as auctioneer and continuing with the smaller Islands theme, Sark was the subject of this meeting's members' displays, details of which appear elsewhere.

Following on from the success of last year's Regional Meeting held at Wakefield, we are holding this year's **September Regional Meeting at the Sketchley Grange Hotel, Burbage, Hinckley on Saturday, 19<sup>th</sup> September commencing at 10.00am**. As with previous Regional Meetings we are continuing with letters of the alphabet as the theme for this meeting, the letters in question for this meeting being E, F and G.

The December meeting at the Royal Philatelic Society London, 41 Devonshire Place commences with coffee and biscuits at 10.30 followed by a room auction and members' displays, the theme of which will be based on World War 1 1914-1918 so dig out your World War 1 material.

### **Forthcoming meetings:**

**19 September 2015 Members Regional Meeting at Sketchley Grange Hotel, Burbage, Hinckley. Theme: "Items beginning with letters E, F and/or G".**

**5 December 2015 Members Meeting Theme: World War 1 1914-1918**

**20 February 2016 CISS Members Annual Competition**

**15-17 April 2016 Members Weekend Meeting at The Hallmark Hotel, Bournemouth**

**9 July 2016 Annual General Meeting**

## **CISS OCTOBER POSTAL AUCTION**

**Will be as large as ever with more rare LL postcards, a good selection of 65 Allix postcards and a wide range of stamps, old and recent postal history including more Occupation material too for all tastes.**

## LOCAL ISSUES OF THE CHANNEL ISLANDS

HERM, JETHOU, LIHOU, BRECQHOUE,  
COMMODORE SHIPPING COMPANY,  
ALDERNEY PARCEL DELIVERY,  
ISLE OF SARK SHIPPING CO,  
FRENCH C.I. & SMALLER ISLANDS

**REGULAR RETAIL LISTS  
& AUCTIONS SENT FREE**

**JON AITCHISON**

Old Tithe Hall,  
Start Hill, Near Bishop's Stortford,  
CM22 7TF, Great Britain.

Telephone: 01279 870488

Email: [britishlocals@aol.com](mailto:britishlocals@aol.com)



## London Meeting Report Saturday, 11<sup>th</sup> July 2015

by Richard Flemming

Nineteen members and one guest attended the Member's Meeting and Annual General Meeting with 18 members sending their apologies.

The meeting commenced at 10.30am with coffee and biscuits and it was good to see a new member, David Rolf, in attendance. This was followed by the room auction with Nick Stuart acting as auctioneer and ably supported by Robert Porter. Bidding was brisk, but some of the higher priced lots remained unsold. In all, sales for the auction totalled £440.

Following a brief pause, CISS President, **Alan Moorcroft**, was invited to present certificates to **Jon Aitchison**, **Ron Brown** and **Moirra Edwards** who were the competition winners for the Society's 2015 competitions held in February. We then commenced with members' displays, **Jon Aitchison** providing an extensive nine frame display of Sark related material starting with a 1703 legal document. There were also several items of mail to and from William Toplis, with some of those from Sark cancelled with the SARK 'A' single ring datestamp and a rare SARK 'B' single ring datestamp. There were several items of Sark Occupation mail including

registered mail where, due to shortages of the SARK registered mail label, the Herm registered label was used, with the Herm lettering deleted and a manuscript SARK inserted. Jon also informed those present of the story of the man who posted himself to Sark. Jon then concluded this part of his display with several examples of colour trials, complete sheets, imperforated sheets, first day cards of the Sark Commodore Shipping Co., including those printed in French, German, Portuguese and Italian. Jon then produced some items of Sark ephemera including landing cards, a tax disc for a tractor, cycle tax disc, tractor driving license, dog license and a horse drawn vehicle driving license.

**Ron Brown** apologised for not bringing any Sark items, but displayed a single frame of extremely rare Alderney occupation mail (ex-Michael Wieneke collection), including an item of mail from the Sylt Concentration Camp. There were also two examples of Feldpost mail from the Island's first Kommandant to Germany written on Judges Courthouse headed note paper (a potential court martial offence). There was also an example of Feldpost mail from Hungary, Libya and Spain to Alderney together with a rare Feldpost mail into Alderney bearing a LUFTPOST Feldpost label which was only applied to mail from the Eastern Front.

Finally, the last item before lunch was a photocopy of an item of SS Vega mail believed to be associated with someone connected with the S.S. Vega or Consular staff sent from Lisbon to Brussels. **David Gurney** posted this item asking if any members has any information regarding mail from the crew of the SS Vega, which as members will recall, delivered Red Cross food parcels to the Islands during the latter part of the war.

Immediately following lunch 18 members reconvened for the 65<sup>th</sup> AGM. Once the AGM business was completed we returned to members' displays relating to the Island of Sark (or any new material). **Bob McDonald** provided material relating to the Sark Post Office over the years including pictures of when the pillar box was painted gold. There was also a 1942 real photo of the Sark amateur dramatics group and 1945 picture postcard of the German forces leaving Sark. To conclude the Sark items, Bob showed a Notice referring to the tariff of letters from Sark to Guernsey and vice versa dated 1838.

Bob also showed an interesting Biberach internee item of mail that was sent from East Grinstead. The item had been censored by a British censor and resealed with PC 90 censor tape. The item was then further censored by the German forces and resealed with German Oberkommando der Wehrmacht



sensor tape. It is not sure if this is a unique censorship of an item of Biberach internet mail.

**John Hirst** showed an eclectic range of Sark postcards including the gold painted Sark pillar box. There were also items showing Sark prison, Sark Ambulance Service, horse drawn transport on Sark and finally Sark parish church.

**Robert Shaw** commenced his display with a poster advertising the GUERNSEY, ALDERNEY & SARK S.S. Co. Ltd. "ACCELERATED/SARK SERVICE". Noting the rate for a single trip to Sark was 1/6d. Robert then showed items from the 3<sup>rd</sup>, 4<sup>th</sup> and 5<sup>th</sup> issues of Sark Commodore Shipping Co. labels and concluded with correspondence from 1958 to 1966 between Sq Ldr Stratton regarding the supply of [new issue] stamps.

**Dave Edwards** showed early pre-1900 photographs of Creux Harbour, Sark and items that are termed "Carte de visit" from the 1860s that showed the old tunnel that was used on Sark to transport passengers and goods from the steep up hill road that led from the harbour. Dave also produced examples of stereo cards of Sark views and lists Singleton, Carl Norman and Poulton as the sources of these photographs.

Finally, to conclude the displays, **Richard Flemming** showed a range of early Sark letters and a 1609 legal document written on vellum. One letter dated four days after the battle of Waterloo (18<sup>th</sup> June 1815) gave some insight into the progress of the battle itself.

There was also a letter into Sark bearing an early example of the 1d black and maybe one of the earliest known usage into Sark. There were also two items of mail dated 1838 that discussed the use of the mail basket for the carriage of mail between Sark and Guernsey and vice versa, and interestingly relates to the 1838 Notice of tariffs displayed earlier by Bob McDonald. To conclude the Sark section of his display, Richard showed a rare SARK undated double arc handstamp applied to the reverse of an envelope dated September 30, 1859.

Richard also showed two items of early mail between the Channel Islands and France. The first was an entire from Guernsey to France via St. Malo that carried the 28 x 3½mm ST MALO handstamp as listed in the catalogues of Channel Islands postal history and used from 1798-1800. The second item also bears a ST MALO handstamp but this one, dated 1814, measures 33 x 5mm and is unlisted in any catalogue. By 1814 St.Malo was using the COLONIES PAR/ST MALO handstamp.



## NEWS OF MEMBERS

**Hugh Jefferies MBE FRPSL** – Editor, *Gibbons Stamp Monthly* and the SG Stamp Catalogues, has been appointed a Member of the Most Excellent Order of the British Empire (MBE) for services to Philately.

The announcement of the award in the 2015 Queen's Birthday Honours was made in The London Gazette on 12 June. Only four others have received the MBE for services to Philately

Congratulations to our following members who achieved awards at the London 2015 EUROPHILEX exhibition as under:

### **Jon Aitchison FRPSL**

- Large Vermeil - The Isle of Man before Postal Independence. Steps on a route to a Postal identity.

### **Graham Booth FRPSL**

- Gold - Spoon Cancellations of Great Britain

### **Alan Holyoake FRPSL**

- Large Gold - Secured Delivery Leading to the Introduction of UK Registration of Internal, External and Transit of Mail 1450-1852.
- Large Vermeil - The World's First Postage Stamp (Literature)

### **Chris King RDP FRPSL**

- Large Vermeil - Denmark and the Second World War 1939 - 1949 Overseas Mail

### **Brian Sole FRPSL**

- Large Vermeil - The Story of the British Greetings Telegram Service

### **New find – Havre des Pas 24½mm single circle datestamp**

by David Winnie

At the recent CISS Auction, I acquired this registered cover dated January 1961 as shown below.

David Gurney's Jersey Sub-Post Office book refers to a 24½ mm single circle steel datestamp having been despatched by the GPO in London on 11 March 1958. This datestamp is distinctive by the number **2** at the foot and is shown as Type 3 in the book.



To date no example of use had so far come to light to my knowledge, but the cover clearly shows the use of this datestamp. The registered cover is addressed to Munich, Germany sent by A Steiner and has been opened for Customs and Currency examination in London and re-sealed at the Post Office.

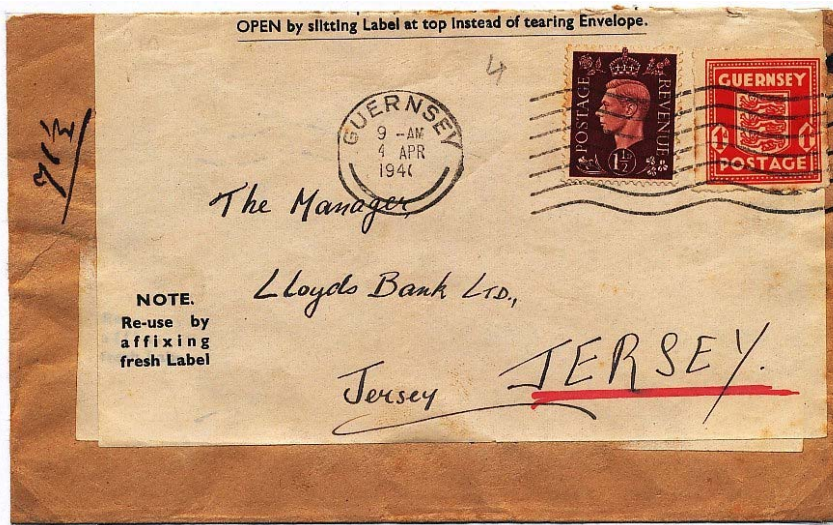


Since acquiring my cover I have learned that another example does in fact exist in the collection of Guy Dandoy in Belgium. Guy has provided David with a scan and I can show one of the backstamps from this second registered letter which is addressed to Glasgow on 30 April 1962. Can any member report yet another example?

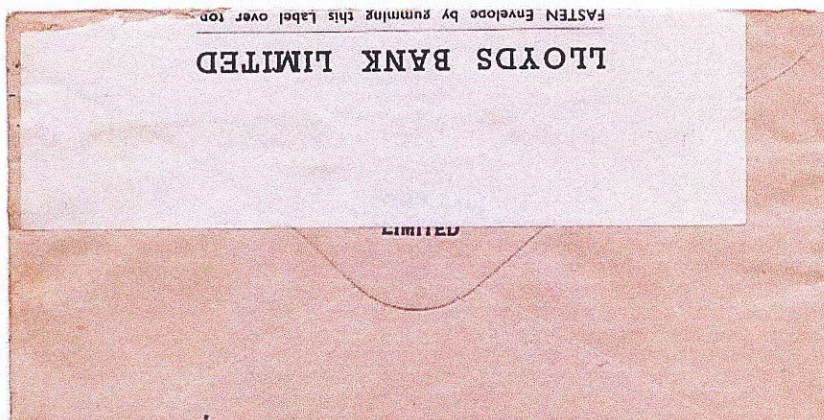
## Twice used Inter-Island cover of Lloyds Bank

by Leo Mayr

The envelope shows the printed words “Lloyds Bank Limited“ on the back partly below the label, but it is unclear which branch office sent it originally or to whom, as the original address-label on the front has been partly torn off, although remainders are still visible below the Re-use label.



The second use was from Guernsey on 4th April 1940, using a printed Re-use-label of Lloyds Bank Limited.



## **DISPOSAL OF YOUR CHANNEL ISLANDS' COLLECTIONS**

**If you or your relatives wish your collection to be sold due to change of interest, incapacity, or death the Society could assist you by arranging for its disposal within the C.I.S.S. through the Society's auctions and/or circulating Packets.**

**Benefits can be:**

- 1. Best realisation of value to owner or dependents.**
- 2. Opportunity for members to obtain items reasonably.**
- 3. Society income enhanced with commission charged at 10% on sale by auction or packet plus 2% insurance.**

**Several collections have been successfully sold in this way in recent years to the benefit of the owners. In the first instance please contact the Secretary at [rflemming@talktalk.net](mailto:rflemming@talktalk.net) or ring 01455 613826**

### **APRIL CISS POSTAL AUCTION REPORT by Nick Stuart**

The Auction produced sales of £10,779 from 83 bidders.

There was a good interest across the postal history sections with a Jersey straight line mark, second type, selling for £48, an entire to Guernsey endorsed '*Forwarded by yr H Servant Peter Cailletau*' for £120. The cover with the St. Sampsons undated arc on the front and a blue Guernsey datestamp on the back went for £290.

A Jersey 1836 entire with a good Jersey/Penny Post mark sold for £210 as well as a range of CI/French mails and early Guernsey and Jersey postmarks.

There was also a good range of Occupation unmounted mint imprint blocks selling between £10 and £55 and Jersey views covers with Sub Office cancellations. The Jersey Views ½d half size essay in brown attracted much interest and went for £280.

The Red Cross messages and Internee Mail section was, as usual, popular amongst the bidders with a range of prices being achieved from £4.50 to £48. The uncirculated 1/- Jersey Occupation banknote, estimated at £20 sold for £42

Herm locals attracted a lot of attention and the two Triangular 4d and 1/- proofs went for £100 each. Many lots were sold close to estimate so the early bidders were often the winners.

This auction also had a good range of rare, quality postcards for which there was some fierce bidding with many sold well above their estimate. Some examples are:

GUERNESEY LL 48 'Desembarkment from Sarck' mint 5\* card - £170

SARK LL 55. - Joung Girl vertical mint 5\*card - note spelling error - £85

SARK LL 58. - Harvest time mint 4\* card - £65

CHANNEL ISLANDS LL 215. - Hortensias colour mint 5\* card - £120

JERSEY LL 248. - Bouley Bay Harbour mint 5\* card - £220

JERSEY LL 258. - Beach of Lecq Pavillion Hotel mint 5\* card for £220

JERSEY LL 4051. - Rough Sea, Corbiere Rocks - said to be unlisted - mint 5\* card - £230

JERSEY LL 4052. - Rough Sea, Corbiere Rocks (different view to above card and not listed as such) mint 5\* card - £230

### **ANY UNWANTED SOCIETY JOURNALS?**



Please do **not** throw your Journals or old Bulletins away. Send to the Membership Secretary, **Moirra Edwards at 86, Hall Lane, Sandon, Chelmsford. Essex. CM2 7RQ** for recycling to other members.



**An early entire letter from British Guiana to London dated 8<sup>th</sup> July 1840 and forwarded to Jersey by Alan Moorcroft FRPSL**

What a treat to see this early letter from British Guiana to London forwarded to Jersey in the last Journal No.2 Vol.34. A lovely item belonging to Mike J. Y. Roberts.



However, I do not agree with the write-up which states the 1d black added to the cover was 'unnecessary'. The 8d Ship Letter charge covered the letter's journey from entry into England at Liverpool to its destination in London.

On receipt in London the letter was endorsed 'St Helier, Jersey' the 1d black added to cover the journey from London to Jersey. On the

introduction of Uniform Penny Postage on 10<sup>th</sup> January 1840 re-directed letters were charged for the second and any subsequent journeys at the uniform rate based upon weight. Thus the 1d charge was correct and hence why the 1d black has been cancelled with a London Maltese Cross.

## **A Forged Channel Islands Distinctive Maltese Cross**

by Guy Dandoy



In March of this year I purchased this genuine stamp, but with a forged postmark, for the sum of Euros 25.00. It is good to have an example of a forgery which is why I purchased this for my collection.

The postmark is, as David Gurney says, just too good to be true and members are cautioned to be careful as so many examples of this Maltese Cross are forged and can often attract high asking prices



# St. Johns, Guernsey Midget Parcel Label

by Guy Dandoy

I have this extraordinary large piece in my collection bearing at least 78 x ½d QEII stamps, a Customs Declaration label and a midget type parcel label of St. Johns dated 5 JU 59 addressed to Alderney in an upright rouletted format different to that in David Gurney's collection, now in the possession of David Winnie.



## A previously unlisted LL postcard.

by Henri Chartier



I recently acquired this scarce un-numbered postcard which was previously unknown, although I am now informed it is recorded in the recently published *Catalogue of Jersey Postcards published by Levy Sons & Co., Paris* by Bob Mallett where it is listed in the sepia large white border set.

Does any other member have a copy of this postcard?

## C.I. Postal Stationery – A request by Gerald Marriner FRPSL

I am doing some research on overprinted postal stationery of the Channel Islands. The 1st edition of the SG Channel Islands catalogue only lists earlier items of course. If any CISS member has information / listings on postal stationery of Jersey and Guernsey (airletters, registered envelopes, reply coupons, etc) could they please email me at ([gerald.marriner@gmail.com](mailto:gerald.marriner@gmail.com)) or telephone Gerald on 0116 240 2064.

## Unknown St. Brieux postmark on Channel Islands mail.

by Tony Peters



The P21P ST. BRIEUC postmark is known from 1820 on C.I. mail. Now I can show you an example of the postmark 21/ ST. BRIEUX from 1818. I have this postmark on a letter from Guernsey dated 18.08.1818 to Morlaix as shown above.

The letter was posted paid as a French inland letter which was not legal, the French inland postage to 6 g (4g) to 100 km = 3D.

The entrance to the harbour of St.Brieux (now St.Brieuc) lies in Le Légué, the biggest part is a part of Plerin and St. Brieuc is about 3 km away. During this early time there was only a Post Office at St.Brieux.

Today St.Brieuc and also Carteret are important harbours for small merchant ships and for industrial goods.

## Who was General Boulanger?

Researched by the Late Harold Gough

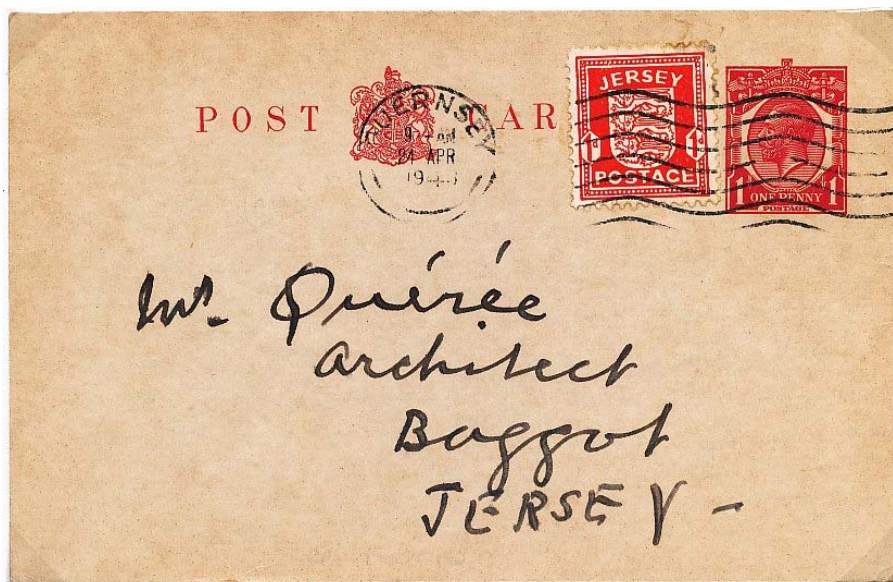


Postcard collectors will be aware of this LL postcard 220 Jersey which features General Boulanger's house at St Brelade, Jersey.

George Ernest Jean Marie Boulanger was born at Rennes in 1837 and was educated at St Cyr. He joined the French Army serving in Italy, China and the Franco-German war being several times wounded and was eventually promoted to General. Through radical influence he served as Minister of War from January 1886 until May 1887. However he then became involved in several political controversies and was arrested for remarks made about the then War Minister. In 1888 he was deprived of his command for disobedience to orders, but immediately elected a Deputy for the Dordogne and Nord. He was subsequently wounded in a duel with M Floquet, the Minister President. He became really formidable in 1889 supported with large sums of money by leading Royalists for their own ends. However when the Government prosecuted Boulanger he lost courage and fled the country. He was condemned in his absence, his schemes wholly collapsed and he shot himself in Brussels in 1891. Georges Boulanger had lived in Jersey for a short time in the house at St Brelade's Bay, since demolished.



## A commercial use of a Jersey 1d Arms stamp in Guernsey during the Occupation by Leo Mayr

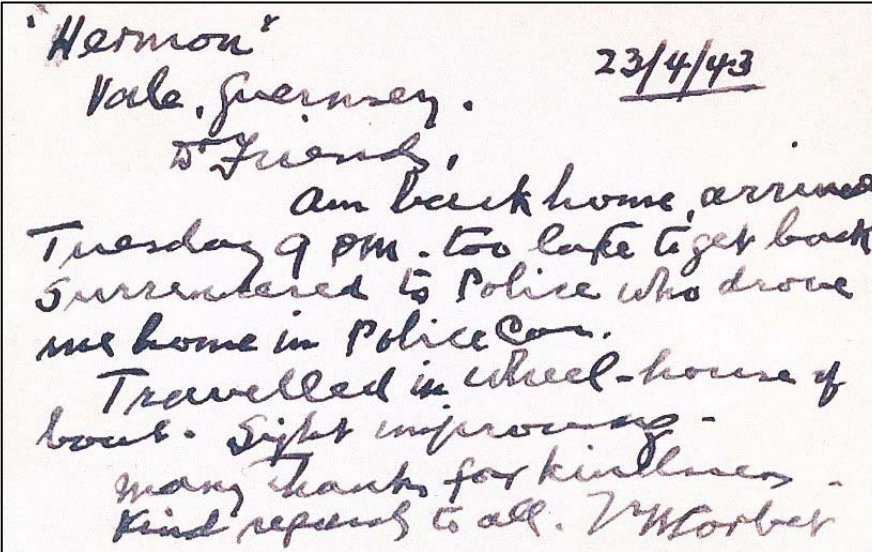


The occupation stamp issues of Jersey were not sold at the Post Offices in the Bailiwick of Guernsey, but they were valid for postage there. Philatelists took care that Jersey stamps with Guernsey cancellations are not really scarce. However, such covers are 'philatelic' and do not represent an actual commercial use.

There were cases, though, when a Jersey stamp was used in Guernsey by someone without any philatelic background as the following story shows. When I acquired the card I did it mainly because I was interested in a postal stationery card used on inter-island mail. The text of the message also gave an interesting reading and it was obvious that the card had been used by a Mr. Corbet upon his return from Jersey by boat, in order to inform his friend in Jersey of his safe return. Mr. Corbet must have brought the card with him from Jersey. As it was a pre-war card still bearing a printed stamp for the former postcard rate of 1d, an additional 1d stamp was required. This, Mr. Corbet had bought before his return, at a Jersey Post Office (hence a Jersey stamp), and when he posted the card in Guernsey on 24th

April 1943, the Jersey stamp became commercially used with a Guernsey postmark.

There were two words in the message that hit my eyes: “*Sight improving.*” I instantly thought that this could have something to do with an eye-operation or treatment. On the next occasion when I visited the Guernsey Archives I tried to find out something about this Mr. Corbet and as I knew for his journey between the Islands he would have needed a German permit I went through the respective German records from April 1943 backwards. Eventually I found his name on a list of permits granted on 26th January. A Mr. William Corbet, living in Guernsey, was permitted to go to Jersey *for c. 14 days*, the reason given as “*treatment by an oculist*”. Whether his stay in Jersey was extended later for medical reasons or whether he did not leave before early April, it seems more than obvious that this document shows that Mr. Corbet visited Jersey because of problems with his eyes and the card I had acquired was posted on his safe return. There is hardly a better way to prove that this particular Jersey stamp was absolutely commercially used in Jersey.



“Hermon”  
Vale, Guernsey. 23/4/43  
To friends,  
Am back home, arrived  
Tuesday 9 PM. Too late to get back  
Surrendered to Police who drove  
me home in Police Car.  
Travelled in wheel-house of  
boat. *Sight improving.*  
many thanks for kindness -  
Kind regards to all. W. Corbet

Nebenstelle Guernsey  
der  
Feldkommandantur 515  
Az.: Ic I

O.U., den 26. Januar 1943

An die 319. J.D.

Betr.: Sonderreisegenehmigungen fuer Zivilisten.  
Bezug: Befehl vom 7.10.1942 Nr. 4323/42 geh.

28 JAN 1943

Liste

der in der Woche vom 20. - 26. Januar 1943 seitens der Nebenstelle Guernsey der Feldkommandantur 515 erteilten Sonderreisegenehmigungen:

Name	wohnhalt	nach	Dauer	Begrundung:
Le Patourel, A.D.	Guernsey	Herm	1 Tag	Sammeln der
Ogier, H.	"	"	"	"
Dorey, J.N.	"	"	"	Schafe auf Herm
Bourgaise, J.A.	"	"	"	"
Le Patourel, H.O.	"	"	"	(unter Aufsicht
De Garis, J.A.	"	"	"	von KVOT.Oser)
Dorey, L.G.	"	"	"	"
Collas, M.	"	"	"	"
De Garis, E.	"	"	"	"
MacDonald, Laura	Herm	"	dauernd	Frau des Verwalters auf Herm
De Page, Marg.	"	"	"	Frau des Schaeffers auf Herm
Help, Percy	Guernsey	Alderney	"	Aufnahme der
Richard, Clifford	"	"	"	Arbeit fuer
Elen, Thomas	"	"	"	Wehrmacht.
Chazel, Dorothy	Jersey	Jersey	"	Rueckkehr zum Wohnort.
Corbet, William	Guernsey	"	ca. 14 Tage	Behandlung dch. Augenspezialisten.
Vaudin, George	"	Granville	dauernd	Platzuefer der Staaten von Guernsey.

gez. v. Aufsess  
Kriegsverwaltungsrat.

II Abdruck an Feldkommandantur 515 -Ic -  
mit der Bitte um Kenntnisnahme.

III W.V. 2.2.1943

K.V.R.

## ANGL MB CALAIS - A new find used on the Channel Islands to France route by Luc Content.

With great attention I have read the article *ANGL MB CALAIS – A new find used on the Channel Islands to France route* in *Les Iles Normandes* of December 2014 (volume 33 – n° 4) written by Henri Chartier. I came to the conclusion that the content of this article is an incorrect description of an already known 'ambulant'-stamp, used on the French border.



The stamp has the following legible inscription “ANGL/ MB. CALAIS” and not “ANGL/ BM CALAIS” as suggested by the author in the article. Hereby I have to conclude that this concerns a bad print of the stamp “ANGL/ AMB. CALAIS/ 14JY14/ 1857” + illegible littera.

A correct explanation for the letter is the following: The letter was sent on July 13, 1857 from Jersey (JERSEY/ JY 13 1857 - littera A) over London (Crown 14 JY 14 1857 - littera RM) via the British mail boat between Dover and Calais (ANGL/ AMB. CALAIS/ 14 JY 14 1857 + illegible littera) to Paris (PARIS/(3) 15 JUIL. 57).

Here you find a clear example of the incorrectly described stamp:



The search for the Boîte Mobile stamp of Calais remains open ...



## Channel Island Postal BidSales

Gategny Chambers, 1st Floor, Bosq Lane, St. Peter Port, Guernsey, GY1 2LP.  
Tel: 01481 727353/Fax 01481 725981 Email: [dtomlin@cipostalbids.co.uk](mailto:dtomlin@cipostalbids.co.uk)

Postal Auction catalogues are produced 5 times a year and include a wide variety of Postal History and stamp issues. Including specialised listings.



We offer a wide range of Channel Islands and Isle of Man stamps in our Retail Catalogue.

Please visit our Website:

<https://www.cipostalbids.com> for all these and much more including Special Offers of rare and scarce items. Catalogue available by post on request.



## A 1943 philatelic postcard from Guernsey to Kiel, Germany.

by Michael Wieneke

As requested by our Editor, David Gurney FRPSL, I comment below on this interesting postcard which was first sent to David by our member in Belgium, Guy Dandoy, seeking my view on this.



This postcard never travelled in the post from Guernsey nor in the Feldpost. It obviously was a souvenir put into an envelope – which maybe – was sent by a German soldier or sailor.

The rate of 1d on the one hand was insufficient for a postcard sent inside Guernsey, because it had more than 5 words (2d), whilst on the other hand the address was “Kiel, Germany” and this was a foreign country so the postal rate for civilian mails was 15 Pfennig in German stamps and posting via the fieldpost office (with fieldpost cancel), of course being normal fieldpost-mail from a soldier (or sailor), was free of charge!

The fieldpost number **M 27727** belonged to a supply-ship called **BORDSEE**. This ship was a small vessel of less than 3000 tons, because it

is not listed in my files (containing only ships of more than 3000 tons). I do not have any information concerning this small vessel. Maybe it also sailed to the Channel Islands with supplies, but I do not know. If so, the sender must have been a crew member and made a “souvenir” for a friend in Germany, to show a “piece of Britain, occupied by Germany”?

## ST. PETERS, JERSEY SUB-POST OFFICE

by Tony Peters

I show a cover from St. Peter's, Jersey to Hendon with the double circle



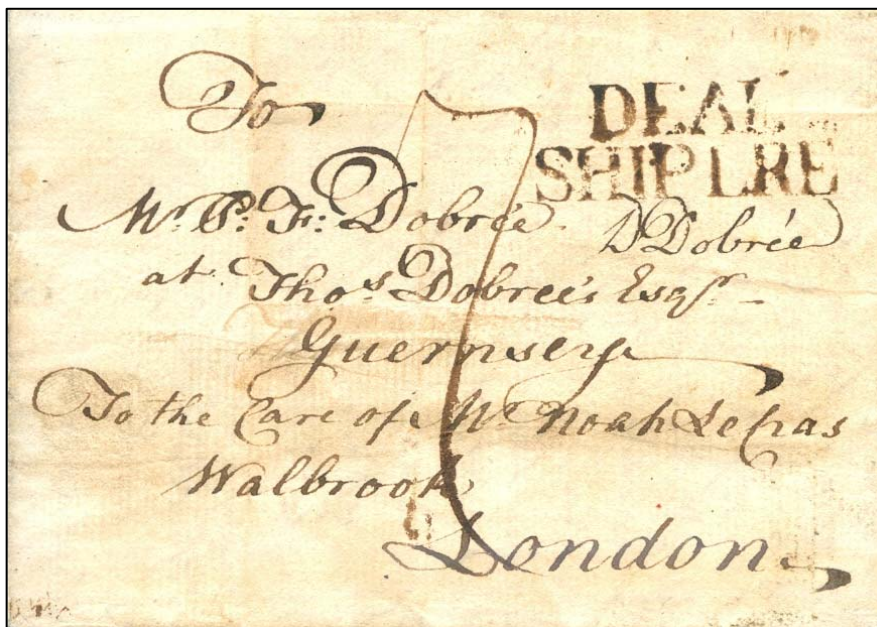
date stamp dated 14.12.1946.

The cover has no postage stamp, but shows a manuscript ‘1’. It seems there may have been a shortage of stamps at this country Sub-Post Office at that time.

## In postal history do not always take things at face value – Noah Le Cras!

by David Gurney FRPSL

When acquiring new material it is always important to check the detail and look again at rates for example to see if you are in complete agreement with the description given. I recently added this entire letter to my Letter Forwarding Agents collection and looking carefully at the address I was not convinced with the interpretation of the lettering of the 'Care of' name.

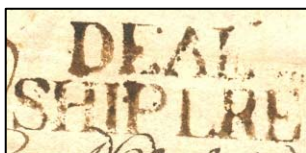


I had been aware of this letter some years ago and when researching for my book *Letter Forwarding Agents of Great Britain handling Channel Islands letters 1673 – 1855* I recalled that it had been sold to the previous owner as a rare London Forwarding Agent named Noah Sepas. However, this did not strike me as an appropriate name and certainly not a Channel Island name as most London Agents handling Channel Islands mails were merchants many of whom were related to Island families. Interpretation of 18c hand writing can be difficult to the uninitiated and following discussion some years ago with the staff of the Manuscript Department at the Guildhall

Library in London (recently transferred to the London Metropolitan Archive), whom are expert in deciphering early hand writing, we concluded this surname might in fact be Le Cras and not Sepas. They suggested a double check of the name by reference to the London Commercial Directories of the 1770s whereupon I found a Noah Le Cras listed as a Merchant at 6, Walbrook. Further I found that in 1776 Noah Le Cras had entered into partnership with Paul Le Mesurier, another Channel Island Merchant, Forwarding Agent and future Lord Mayor of London. A very successful partnership of Le Cras and Le Mesurier ensued whereby they made a fortune as Prize Agents.

Noah Le Cras is a very scarce Agent as very few examples of letters handled by him are known. When I eventually read the contents of this very long and bulky letter mention was made of the Le Cras family in London whom appeared to be closely associated with the writer who was a naval officer on board HMS Deal Castle at that time.

The letter was written on the 4<sup>th</sup> January 1774 on board the Deal Castle at Montserrat and was endorsed inside the folded flap "*To Mr Nicholas Dobree, on board his Majesty Ship Deal Castle To be left at Messrs Scotts & Dover at Antigua*". With the re-folding of the letter it is probable this endorsement was apparent on the back of this large letter when written



The letter was then carried privately to England where it was landed at (coincidentally) Deal and received a good strike of the two line **DEAL / SHIP LRE**



handstamp in black ink. It was charged 7d to enter the post being the inward ship letter rate of 1d at that time plus the inland letter rate to London of 3d doubled to 6d. The letter received the London Bishop mark dated 8 AP and was then delivered and carried privately to Guernsey. I had wondered at one stage whether the endorsed '7' was in fact an 18c '3', but concluded that it was indeed a '7'. Although I doubted the rate at 7d it is generally felt to be correct. Perhaps someone may disagree with this conclusion and I would be very interested to learn any views on this.





Further enquiries have revealed that HMS Deal Castle was a 6<sup>th</sup> rate frigate similar to the above impression with 24 cannon and built in 1756 by Perry, Blackwall, London. She is reported to have foundered on the 11<sup>th</sup> October, 1780 off Puerto Rico in the Great Hurricane which destroyed much of the British war fleet stationed near to St Lucia at that time.

Royal naval vessels lost in the Great Hurricane of 1780 in the West Indies were:

3<sup>rd</sup> Rate ship of the line STIRLING CASTLE

5<sup>th</sup> Rate frigate PHOENIX

6<sup>th</sup> Rate frigates ANDROMEDA, **DEAL CASTLE**, LAUREL and SCARBOROUGH.

Sloops of war BARBADOES, BEAVER PRIZE and ENDEAVOUR

Gun-Brig VICTOR.

## C.I.S.S. PUBLICATIONS

Our current stock of merchandise at  
reasonable prices.

However postage is extra and will be invoiced.

**Write to:** C.I.S.S. Book Sales at 64, Falconers Green, Burbage.  
Hinckley. Leics. LE10 2SX or **Email** – rflemming@talktalk.net

- |     |   |        |
|-----|---|--------|
| 1.  | The Channel Islands Sub-Post Offices and their Postmarks (292pp)                                  | £6.00  |
| 2.  | The Post Office in the Smaller Channel Islands (154pp)  | £12.00 |
| 3.  | The Postal History of the Guernsey Sub-Post Offices (265pp)                                       | £10.00 |
| 4.  | Red Cross Postal Message Scheme with the Channel Islands<br>during the Occupation 1940-45 (389pp) | £8.00  |
| 5.  | Islanders Deported Part 11 (246pp)  | £4.00  |
| 6.  | The Postal History of the Jersey Sub-Post Offices (376pp)   | £15.00 |
|     | <b><u>(This book is reduced from £27 to £15 as staples are slightly rusting)</u></b>              |        |
| 7.  | Registered Mail of the Guernsey Sub-Offices 1968-1990 Vol. 2                                      | £3.00  |
| 8.  | Registered Mail of the Guernsey Sub-Offices 1968-1990 Vol .3                                      | £3.00  |
| 9.  | Channel Islands Revenues (Fifth Edition) – 1997   | £6.00  |
| 10. | Jersey & Guernsey Slogan Postmarks of the 20th Century (85pp)                                     | £7.50  |

### **Also available:-**

**Binders** for 'Les Iles Normandes' holding 12 issues @ £4.50 each or  
three for £12.50 plus postage.

**Society Ties:** In blue or maroon with CISS motif @ £8.00 each plus postage.

Payment may be made by Visa/Access/Mastercard or Paypal.

A service charge of 5% is made in accordance with the  
Credit Card (Prices Discrimination) Order.

Please quote your card number, expiry date and card settlement address.

**Please do not send payment until you receive an invoice  
for the cost of your order plus the postage and packing.**



## **Guernsey NVIs.**

by Ray B. Dixon

With reference to the two recent NVI sets issued on 1st May 2015 for Guernsey (Liberation) and Alderney. (Flora and Fauna). The set of six was therefore £3.62.

On **June the 1st** Guernsey raised their rates as follows -

GSY Letter/Local Letter 42p. UK Letter 56p.

GSY Large Letter/Local Large Letter 57p. Europe Letter 62p.

Rest of World Letter 68p. UK Large Letter 77p.

The stamps noted above were released on 1st May 2015; the Guernsey postage rates increased on 1st June. Guernsey states that the stamps were released on 1st May, but carried the new rates of 1st June, and the price for those stamps was the same on 1st May and 1st June. They were always sold at that price.

**My query is that although the sets were clearly sold from the Bureau at £3.62, what about stamps and prestige booklet that were sold from Post Offices for postal use during the month of May before the rates went up? Were the stamps not distributed to Post Offices or not used until 1st June?**

The rates then were;

GSY Letter/Local Letter 41p. UK Letter 55p.

GSY Large Letter/Local Large Letter 54p. UK Large Letter 74p.

Europe Letter and ROW Letter didn't exist stamps were Int 20g and Int 40g

This situation also arose in 2010 when Guernsey issued a new set of NVI's on 18th March 2010 and a new rate increase was implemented on the 1st April 2010. I received my sets all charged at the new rate.

Guernsey also issued their Penny Black and Europa sets on the 1st of May, but these were not NVI stamps. Strange that they would issue a Europa set that in effect the values were only good for a month!

Can any member comment?

## **65<sup>th</sup> ANNUAL GENERAL MEETING REPORT**

Held at No. 41 Devonshire Place, London on 11<sup>th</sup> July 2015 at 2.00pm

Present: Chair was taken by Dave Edwards with eighteen members in attendance.

1. **Apologies:** M. Bailey, R. Brown, A. Chappell, B. Coles, Mrs. J. Flemming, A. Holyoake, D. Horner, M. Jay, G. Marriner, T Merson, T. Norgate, R. Osborne, J. Parsons, D. Tate, J. Triggs, D. Winnie, G. Wood and B. Young
2. **Minutes** of the 64<sup>th</sup> AGM as published in *Les Iles Normandes* Vol. 33, No.3, pp 33 – 36 were proposed for adoption by J. Hirst and N. Stuart and passed unanimously.
3. **Matters arising**

7.1 The Secretary, R. Flemming, reported that this was discussed by the Committee and it was agreed by the Committee that it was deemed inappropriate to hold a non-Channel Islands ‘philatelic’ event.

7.2 The Secretary, R. Flemming, reported that this request for membership cards was discussed at the next committee meeting and it was requested by the Committee that the Secretary could look into this matter and report back to the Committee.

### **4. Officers’ Reports**

These had already been circulated to members prior to the AGM. Updates following receipt of the Officers’ Reports are given below.

**4.1 Membership Secretary,** Mrs. Moira Edwards, reported that membership now stood at 283 members with two new members from the UK and one from Europe.

**4.2 Treasurer’s Report.** This was presented to those members present and showed that there had been an excess of income over expenditure of £1556.70. J. Hirst proposed the adoption of the Society’s accounts. This was seconded by D. Laurillard and carried unanimously.

**4.3 Archivist.** As Mark Bailey was unable to attend the AGM he kindly forwarded his report to the Secretary who read his report to those members present.

**4.4 Book sales** Richard Flemming reported that book and sundry sales had been somewhat slow over the past 12 months with only nine requests for books. A few items were sold at the Members' Weekend in Guernsey.

## 5. Election of Officers

		<b>Proposer</b>	<b>Seconder</b>
Chairman	Dave Edwards	R. Bartlett	G. Cory
Secretary	Richard Flemming	D. Edwards	G. Marriner
Treasurer	Robert Porter	R. Flemming	J. Hirst
Editor	David Gurney	A. Moorcroft	D. Winnie
Membership Sec.	Moirra Edwards	L. Mayr	D. Somerville
Packet Sec.	John Triggs	R. Flemming	A. Moorcroft
Auction Sec.	Nick Stuart	J. Triggs	D. Gurney
Advertising Sec.	Steve Wells	D. Winnie	A. Moorcroft
Competition Sec.	Gavin Wood	R. Flemming	G. Marriner
Member's Rep	Alan Moorcroft	D. Gurney	D. Edwards
Member's Rep	David Winnie	D. Gurney	R. Flemming

## 6. Joan Flood Salver

This was awarded to Bob Mallet for his publication *A Catalogue of Jersey Postcards Published by Levy and Sons and Co., Paris* at the 2015 Members' Weekend meeting at Guernsey.

## 7. Location of Member's Weekend meeting 2016

The Member's Weekend meeting will be held in Bournemouth, 15th – 17th April 2016 at The Hallmark Hotel.

## **8. Any other business**

- 8.1** Jon Aitchison thanked the Committee for producing the certificates that were presented to the 2015 Competition winners.

He also enquired whether the competition trophies will be withdrawn and placed into the care of the Society's Archivist. Jon was informed that this will be discussed by the Committee at its next meeting.

- 8.2** Jon Aitchison asked whether further discussion had been taken by the Committee as to whether it had considered the possible move from the meeting room at RPSL 41 Devonshire Place to the Council Chamber within the same building. Jon informed the meeting that there would be a cost saving if this was the case. Jon was informed that this was considered and that other venues were also under consideration and that once all information had been received a decision would be made by the Committee.

- 8.3** There being no further business the meeting was closed at 2.28pm.

**Richard Flemming**  
**Secretary**

# WARDROP & COMPANY LIMITED

*Philatelic Insurance Specialists*

**The insurance for the serious collector providing  
peace of mind at surprisingly low cost**

**What is covered** - Stamps, covers, envelopes, postcards, albums, philatelic literature, stamp boxes, and other articles of philatelic or postal history interest

**Insurance against** –All risks of physical loss or damage to property excluding wear, tear, gradual deterioration, moth, vermin, and damage or deterioration of any article directly caused while being worked upon or undergoing any process

**Scope of cover** – Anywhere UK (subject to prior advice of transits or locations other than the main dwelling for sums over £15,000) including postal or accompanied sendings

**Basis of valuation** – Market value

<b>Cost</b> –Anywhere UK	£3.75 reducing to £3.00 per £1,000 for higher sums
Normally Bank	£2.50 per £1,000 (30 days withdrawal any one year)
Bank only	£1.25 per £1,000

For a personal quotation and prospectus write to us at the address below,

telephone **01376 563764**, email [john@wardrop.co.uk](mailto:john@wardrop.co.uk) or visit our website [www.wardrop.co.uk](http://www.wardrop.co.uk) for more information including lots of links to other philatelic sites and an online proposal form.

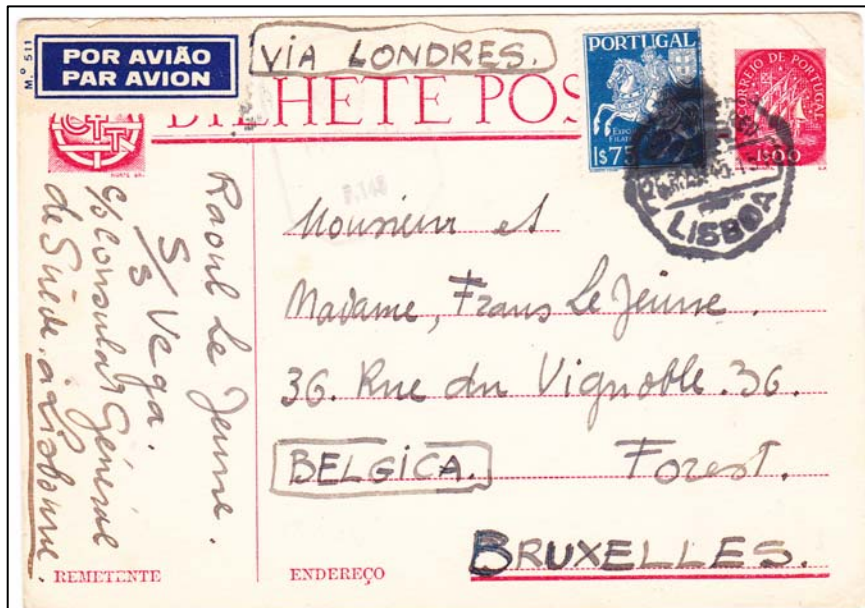
**Wardrop & Co Ltd  
PO Box 772, Coggeshall  
COLCHESTER CO6 1UW**

**Authorised and regulated by the Financial Conduct Authority**

## AN S.S. VEGA MYSTERY

by David Gurney FR SPL

This interesting card came to light in a discussion between Moira Edwards and Peter High of Banstead, a Past President of the Forces Postal History Society, at the recent Midpex Fair.



The postcard was written on the S.S.Vega on the 27<sup>th</sup> March and cancelled at Lisbon on the following day. It is endorsed VIA LONDRES in ink and there is a faint impression of the British octagonal Crown over Passed censor 149 mark in red.

Who was Raoul le Jeune? Was he on the Vega, connected with or part of a team working with the Swedish Consulate in Lisbon, was he connected with the Swedish Red Cross or some other official?

Which route might the card have taken? Why was it censored in England - evidence of the red octagonal mark towards top left? Close examination shows there is possibly the trace of an octagonal cachet at top right on the text side, the numbers 1/8/8/12 in manuscript along the left of the reverse side and faint signs of another manuscript marking on the address side between BELGICA and ENDERECO.

Does anyone have any correspondence at all with this name or a similar card or letter addressed in this manner? Can any member throw any further light on this unusual card?

27 Mars 1945.  
 Chère Maman, Cher Papa,  
 J'allais reprendre la mer.  
 Soir, après avoir reçu vos bonnes  
 nouvelles. Mon ami, notre cousin  
 malade, a dû être déposé, pour être  
 admis à l'hôpital, afin de s'y faire soigner.  
 Il est de bonne constitution, comme  
 la nôtre. A notre retour nous le repren-  
 drons. J'espère bien, qu'à cette date  
 vous avez vu mon Ami Georges, et  
 que ses instructions ici, j'en aurai, les  
 instructions pour revenir au  
 Pays, après de vous. J'emploierai  
 mes derniers moments libres, pour  
 vous donner davantage de nouvelles.  
 En vous embrassant bien tendrement. René

A rough translated summary of the message on the reverse side of this card is "the son writing to his parents saying that he is replying to the good news on their health and that he also had an illness and that it must be their constitution that is good. He also says that have they seen his friend George's and he has instructions/ directions for him. Finally he takes his last free moments to wish them all the best"

Ed. Our thanks to Patrick Robbe for this and to David Laurillard for his analysis of the card with different scans.

## FORTHCOMING NEW STAMP ISSUES – 2015.

### GUERNSEY POST

#### 6th November 2015 Christmas Stamps

Set of 7 stamps	£3.99
First Day Cover	£5.19
Presentation Pack	£4.89



### **11th November 2015 Stories from the Great War: Part 2**

Set of 6 stamps	£3.62
First Day Cover	£4.82
Presentation Pack	£4.52
Sheets of 10	£36.20
Prestige Booklet	£14.48

## **ALDERNEY**

### **6th November 2015 Christmas Stamps**

Set of 7 stamps	£3.99
First Day Cover	£5.19
Presentation Pack	£4.89

### **10th November 2015 70th Anniversary of Homecoming**

Miniature Sheet	£3.00
First Day Cover	£4.20
Presentation Pack	£3.90

## **JERSEY POST**

### **22nd September 2015 Links with China – Garden Flowers**

Set of 6 stamps	£2.82
First Day Cover	£3.97
Presentation Pack	£3.97
Souvenir Miniature Sheet	£0.94
First Day Cover	£2.09
Presentation Pack	£2.09

### **15th October 2015 Jersey Seasons – Autumn**

Set of 8 stamps	£6.17
First Day Cover	£7.32
Presentation Pack	£7.32

### **9th November 2015 My Jersey**

5 x Local Letter NVI stamps and 5 x UK Priority Letter stamps

Set value £5.20

First Day Cover £6.35

Presentation Pack £6.35

### **27th November 2015 Stained Glass Windows**

**Details to be confirmed in due course.**

### **1st December 2015 Jersey Post Yearbook**

**Details to be confirmed in due course.**

Due to the loss of LVCR, Jersey Post now collects the appropriate rate of VAT on the various products at the point of sale and pre-pays HMRC on all orders entering the UK.

Post & packing charges CI - £1.85, UK - £1.94 (incl. VAT), Europe - £ 2.00 and the Rest of the World - £3.00

Note: This is the basic charge only.

Also, please be aware that from 2013, Jersey Post will be charging 5% GST to Jersey customers on CTO stamps (and complete CTO sheets) only.

## **CHANNEL ISLANDS**

Postal History \* Occupation \* Revenues  
Herm \* Alderney \* Sark \* Jethou \* Lihou

Independent \* Errors and Varieties

Postcards \* Ephemera from all periods

**ALL TO BE FOUND IN MY REGULAR  
POSTAL AUCTIONS AND PRICE LISTS**

Send for the latest catalogue today (free of charge)  
and see for yourself!

## **WINDSOR STAMPS**

**1, Sausmarez Street, St. Peter Port,  
Guernsey, GY1 2PT. C.I.**

**Tel: (01481) 725209**

\*\*\*\*\*

## **VISITING GUERNSEY?**

**THEN VISIT THE WINDSOR STAMPS  
“COLLECTORS CENTRE”**

**1, Sausmarez Street, St. Peter Port, GY1 2PT**

**Tel: (01481) 725209**

*Stamps and Postal History \* Postcards  
Coins and Banknotes \* Cigarette Cards  
Antique Prints \* Engravings \* Maps, etc., etc.*

**WELL WORTH A VISIT!**

# Channel Islands

## at Auction

Grosvenor holds regular specialised public auctions of Great Britain stamps and postal history in central London, heart of the international philatelic market, achieving consistently high results. Interesting Channel Islands material features regularly.



Each auction is available to view, with additional illustrations, on our website, **[www.grosvenorauctions.com](http://www.grosvenorauctions.com)**, and our exceptional printed catalogues are generously distributed, complimentary copies being available on request.

We work closely with collectors to ensure that presentation and prices meet vendors' highest expectations. Commission charges are generous, fully inclusive, and negotiable for valuable consignments. Contact **Andrew Williams** or **Glyn Page** today at the address below for further information on how Grosvenor can maximise the sale potential of your collection.

## GROSVENOR

399-401 Strand 2nd & 3rd Floors London WC2R 0LT

T: 020 7379 8789 F: 020 7379 9737 E: [info@grosvenor-auctions.co.uk](mailto:info@grosvenor-auctions.co.uk)

[www.grosvenorauctions.com](http://www.grosvenorauctions.com)