



**CHANNEL ISLANDS
SPECIALISTS' SOCIETY**

March 2016

Volume 35 No.1

THE CHANNEL ISLANDS SPECIALISTS' SOCIETY

Founded in 1950

for the study of the stamps and postal history of the Channel Islands

OFFICERS

President: Alan N. Moorcroft FRPSL

E-mail: anmoorcroft@btinternet.com

Chairman: Dave Edwards

E-mail: bedenesteda86@btinternet.com

Secretary: Richard Flemming

64, Falconers Green, Burbage. Hinckley. LE10 2SX. *E-mail: rflemming@talktalk.net*

Treasurer: Robert Porter

3, Nursery Road, Hoddesdon. Herts. EN11 9LA. *E-mail: robertwporter@btinternet.com*

Journal Editor: David Gurney FRPSL

4, Kingscote, Tree Lane. Plaxtol Kent TN15 0QA. *E-mail: nangurney1@aol.com*

Packet Secretary: John Triggs FRPSL

“SUNNYSIDE”, La Gibauderie, St. Peter Port, Guernsey GY1 1XF. *E-mail: jtriggs@cwgsy.net*

Auction Secretary: Nick Stuart

3, Dudley Road, Walton on Thames, KT12 2JT *E-mail: - nick_stuart@talk21.com*

Membership & Subscription Secretary: Moira Edwards

86, Hall Lane Sandon. Chelmsford. Essex. CM2 7RQ. *E-mail: membership@ciss1950.org.uk*

Advertising & Press Officer: Stephen Wells

The Hollies. 42, High Street, Tarring. Worthing. West Sussex. BN14 7NR

E-mail: press@ciss1950.org.uk

Competitions Secretary: Gavin Wood

Green Looms Farm, Martins Lane, Hargrave, Chester, CH3 7RX

E-mail: gavinwood1@btinternet.com

CISS Internet address:- www.ciss1950.org.uk

Membership is open to all interested in Channel Islands stamps
and postal history, postcards and ephemera.

Membership application forms can be obtained from the Membership Secretary.
Exchange Packets are circulated regularly. A Postal Auction is held twice yearly.

A 36 page colour Journal is published quarterly.

Meetings are held three or four times a year in London and the Provinces.

ADVERTISEMENT RATES IN LES ILES NORMANDES

Outside back cover: £40.00. Full page: £30.00. Half page: £18.00

©The Channel Islands Specialists' Society

SUBSCRIPTIONS and STANDING ORDERS

Will members please note the following points:-

1. Subscriptions, which are due on **1st January**, should be sent direct to **Moira Edwards** and **NOT** to any other officer of the Society. A Subscription Invoice will be sent in the December issue of the Journal.
2. All members may now pay by credit card or PayPal. The amount will be the appropriate subscription rate plus 5% for charges. Send your card details including number and expiry date to **Moira Edwards**, send your PayPal payment to **treasurer@ciss1950.org.uk**.
3. Overseas members may still pay by STERLING cheque drawn on a U.K. Bank. Non-sterling cheques and non-sterling currency notes will no longer be accepted. Money Orders in sterling currency are acceptable.
4. Members who have not paid by **14th February** are assumed to have resigned.
5. Standing Order forms should be **sent by members to their own bank** and not to the Subscription Secretary.

The Subscription rates for the year 2016 are:-

COUNTRIES	CLASS OF POSTAGE	ANNUAL SUBSCRIPTION RATES in Pounds Sterling
Great Britain	2 nd Class Letterpost	Ordinary Members: £20.00 , or choosing an electronic copy of quarterly Journal in place of a posted hard copy: £15.00 Juniors, Senior Citizens and Registered Disabled: £10.00 , or choosing an electronic copy of the Journal: £7.50 Life Members: £10.00 , or choosing an electronic copy of the Journal: £6.00
Europe	Airmail Printed Paper/ Small Packet Rate	Ordinary Members: £25.00 , or choosing an electronic copy of the Journal: £15.00 Life Members: £10.00 , or choosing an electronic copy of the Journal: £6.00
Rest of the World	Airmail Printed Paper/ Small Packet Rate	Ordinary Members: £30.00 , or choosing an electronic copy of the Journal: £15.00 Life Members: £10.00 , or choosing an electronic copy of the Journal: £6.00

PLEASE ADD A 5% SERVICE CHARGE TO ALL CREDIT CARD AND PAYPAL PAYMENTS

We are pleased to welcome the following new Members:- 2144 Christine Earle, Surrey; 2145 Mike Norman, Midlands; 2146 Nick Hayley, Surrey; 2147 Steve Cope, Leicestershire.

CONTENTS

Secretary's Clipboard.....	3
Meeting Report December 2015	3
News of Members	5
Obituary The Late Francis Kiddle RDP Hon FRPSL	6
A new Carrefour Selous, Jersey registration label	8
Jersey 1969-74 Definitive Presentation Packs	9
An unrecorded Foreign Relations Card FR/C/10	15
Cover to Lieutenant General Graf von Schmettow.....	19
The importance of a Field Post Number	21
1942 Jersey unsealed 1d letter rate	26
Jersey Home for Boys	27
Service suspended 1940 cover.....	30
New find – St. Marys, Jersey undated double arc in blue	31
Bournemouth Weekend meeting 15 – 17 April.....	34
Forthcoming New Stamp Issues in 2016	34

Whilst every care is taken in the production of this Journal statements expressed in articles in *LES ILES NORMANDES* are the sole responsibility of the author(s) and are not necessarily endorsed by the Editor or by the Channel Islands Specialists' Society neither of whom can be held responsible for the accuracy of the information therein or any consequence arising there from

EDITORIAL

This edition has an interesting contribution of modern Jersey definitive Presentation Packs sent in by our Canadian member, Ray Dixon, and a range of other smaller articles on new finds. Do please let me have new articles which keeps our Journal alive and informative, even scans or colour copies of unusual items with just a few words are welcome.

A reminder for our weekend meeting in Bournemouth, Friday 15th to Sunday 17th April, when the postal auction of many exciting lots will be held in the room, so a great opportunity to actually view every lot and also enjoy the bourse with many interesting items for sale. Always a good opportunity to meet some of your fellow members from the Islands and abroad and to view some very interesting material on display.

SECRETARY'S CLIPBOARD

by Richard Flemming

As you read this, Spring has now been with us for a few weeks, although as I write this, a few days into the New Year, it already feels like Spring. In a few weeks time it will be the Society Weekend at the **Hallmark Hotel, Bournemouth from Friday, 15th April to Sunday, 17th April** and I look forward to seeing as many of you as possible at this event. Once again, thanks must go to Gerald Marriner for organising the hotel for us. If you are leaving it until the last minute to book a room at the hotel, may I urge you to contact Gerald as soon as possible so as to avoid disappointment. The programme will be much the same as usual, with a "Three Sheets to tell a story" following Friday night's dinner. Again, there will be members' displays on the Saturday and Sunday morning. If you are planning to bring a display can I ask you to bring a brief write-up as to its content. It makes it so much easier for me to write notes for the next *Les Iles Normandes* Journal.

The Annual General Meeting will be held on Saturday, 9th July 2016. If any member wishes to have a question raised at this event could you please email your question to me so that, hopefully an answer will be available at the AGM, thus speeding up the proceedings.

Unless listed differently, all CISS meetings are held at the RPSL, 41 Devonshire Place, Marylebone, London, with coffee and biscuits served at 10.30am (for an 11am start) and finishing at approximately 4.00pm.

Forthcoming meetings:

15th - 17th April 2016 Society weekend at the Hallmark Hotel,
Bournemouth.

9th July 2016 Annual General Meeting including members'
displays (Theme: Alderney or anything new)

10th September 2016 Regional meeting at Wakefield.

11th December 2016 Theme: Anything ending in a 6.

London Meeting Report Saturday 5th December 2015.

by Richard Flemming

There were twenty members and two guests present at the Christmas meeting with apologies from fourteen members. The theme for the day's meeting was World War I and/or member's recent acquisitions.

As with other London meetings the day commenced with coffee, tea and biscuits at 10.30am followed by a room auction of 75 lots at 11.00am, the

majority of which sold at estimate or above. Following the auction **David Laurillard** was invited to show his display of World War 1 material. David explained that he liked to get close and personal to the history of the personnel he wishes to talk about. This included a letter from Sgt. Maj. Sweeney that was charged 1d bearing a 1^D/I.S/C handstamp. There was a similar item from a William Fitzgerald dated 1914 that again was charged 1d postage due and with a 1^D/FB/A handstamp. David then explained about the Royal Guernsey Light Infantry (RGLI) and their role in World War 1. Of the 2000 men who joined in 1916, over half were either killed or wounded. Here David showed examples of postcards illustrating the RGLI., including an interesting picture postcard to a Miss B. Edmonds of St. Sampsons. There was an example of an 'honour envelope' dated 1917 from Private. A. Mahy with an **"EXAMINED/BY/BASE CENSOR"** label too.

In contrast to finish the morning session **George King** displayed a virtually complete range of Channel Islands modern postal stationery including International and Commonwealth Reply Coupons; air letters of Jersey and Guernsey; registered letters of all sizes from both Jersey and Guernsey, Jersey Special Delivery and Guernsey Post Office Priority Service items.

Bob McDonald showed the 100th anniversary of WW1 stamp issue and a miniature sheet of a WW1 recruitment poster and the Jersey 2015 World War 1 issue titled "Change". Bob also showed a WW1 'honour' envelope from India to Samares, Jersey. **Robert Shaw** showed new acquisitions including a Herm Ferry ticket and then *"now for something completely different"*, Robert played a recording titled "Smokes for Tommies" which told of the Cigarette and Tobacco Fund whereby people of Guernsey were encouraged to donate 6d to the Fund. It was based in St. Georges Hall, St. Peter Port and employed 130 people. In all, some 20 tons of tobacco were sent to the troops via the Fund. Amongst the many items showed by **Gerald Marriner** was a telegram dated 20th June 1940 regarding the evacuation of the Channel Islands. There were also items of mail sent via the Apostolic Delegation, London including an August 1940 letter from Jersey sent via Eire and a September 1940 cover sent via the American Consul in Lisbon. Both received **"UNDELIVERED FOR REASON STATED/RETURN TO SENDER"** handstamps. There was also a rare example of an **AUSWEIS/LICENSE** bearing an **INSEL/KOMMANDANT/JERSEY** label.

Dave Edwards showed postcards, mainly by Thomas Bramley, which illustrated how WW1 impacted on Guernsey and the Islanders from 1914 -

1919 and this was followed by **Moira Edwards** with some interesting information about a Guernsey footballer by the name of John Mahy who won 15 Muratti caps between 1906-14. As a Sergeant in the Royal Engineers he was awarded the French Croix de Guerre for exceptional gallantry and courage in May 1918. Moira also mentioned Private Alfred Priaulx who joined the 1st Battalion of the RGLI in 1917. Unfortunately he was killed later that year and has no known grave, however, he is commemorated on five Memorials, and then interesting information regarding the Edward's family tree which she described as "a small branch". She mentioned Dave's grandfather and four great uncles who served with the RGLI in France. His grandfather became a POW and was repatriated to England in 1918. One of Dave's great uncles was killed in France in December 1917.

Finally Richard Flemming showed two items of WW1 German POW mail from the POW camp at Blanchés Banques, Jersey, each bearing the single circle **POST FREE/PRISONER OF WAR/P.C.** handstamp and this was followed by a recent auction purchase (a real bargain he said) of QV mail sent from either Jersey or Guernsey to overseas destinations including America, Canada, New Zealand and Ceylon (Sri Lanka).

News of Members

Congratulations to Bryan Elliston on his election to membership of the Royal Philatelic Society London.

CONGRATULATIONS TO PETER MOLLETT

Peter (Member No. 149), Hants, joined the Society in 1964.

It is with very great pleasure that the Society recognises this achievement of 50 years of active membership and extends our warmest congratulations and thanks for such continuing support.

New Life Members

We are pleased to announce the achievement of Life Membership awarded to 1563 Luc Content, Belgium and 1569 Richard Oliver, South Africa.

OBITUARY – THE LATE FRANCIS KIDDLE RDP Hon FRPSL



Francis died suddenly on the 21st October 2015, aged 73 years, following a short illness. He first joined this Society in 1972 and built a good Channel Islands collection amongst his other many and varied philatelic interests. He became a Life Member of this Society in 1997.

However his main achievements were outside this Society where he was a member of many other Societies in particular the Royal Philatelic Society London which he joined in 1972 and became Hon. Librarian (1979-1994), Vice President (1992-1994) and President (1994-1996) receiving the Society Medal for services to the Society in 1991. Francis was awarded an Honorary Fellowship in 2009, received the Bacon Medal in 2014 and went on to continue to play a major role in philately generally.

In addition to this, Francis was actively involved in both national and international philatelic judging at the highest levels and received various important appointments. Such involved contributions brought him wide recognition and in 1995 he was invited to sign the Roll of Distinguished Philatelists. Additionally he received a Royal Mail Lifetime Achievement Award in 2001, the Smithsonian Museum Lifetime Achievement Award in 2006 and the Collectors Club of New York Alfred E. Lichtenstein Award for Distinguished Service to Philately in 2012.

His personal collecting interests included Australian revenues and railways, Morocco Agencies, GB Mulready envelopes and letter sheets, Kuwait, Queensland Chalon heads, Mexico Hidalgo Express, GB overprints, GB Uniform Penny Postage Jubilee, GB Philatelic Congresses, Channel Islands, Peru and South West Africa Revenues, postage dues of the world on cover and thematic collections of Golf and Goats.

I have known Francis for very many years and can only echo the sentiments of others in recording that his untimely departure is a very great loss to his family, to philately and to the many institutions he served with such interest and dedication.

David Gurney FRPSL.

JERSEY and GUERNSEY

A large stock of all issues from their first issues in October 1969 to date. Our stock includes Mint, Used, FDC and Presentation Packs also a large Stock of Pre-Independent issues of Occupation and Regionals.

Send for our latest Price List today (Free of Charge) and see for yourself.

**We also stock C. I. Postal History & Postcards
L.L. and Allix wants list welcome.**

**G.ROBBE LTD PTS
YORK CHAMBERS
YORK STREET
ST HELIER JERSEY JE2 3RQ
TEL 01534 723084 FAX 01534 767680
E.MAIL: robbestamps@hotmail.com**

A new Carrefour Selous, Jersey registration label

by Olaf Beecken

I have just acquired a Jersey Carrefour Selous registered envelope from the post liberation period with a hitherto unrecorded label which is just printed CARREFOUR, / JERSEY and is numbered 0055. This suggests at least 54 other examples must have existed at some time although nothing has come to light until now. A lot of similar philatelic registered covers are known



with the date of the 8th December 1945 used at various Sub-Post offices, but this is the first example seen to date of just **CARREFOUR, / JERSEY**.

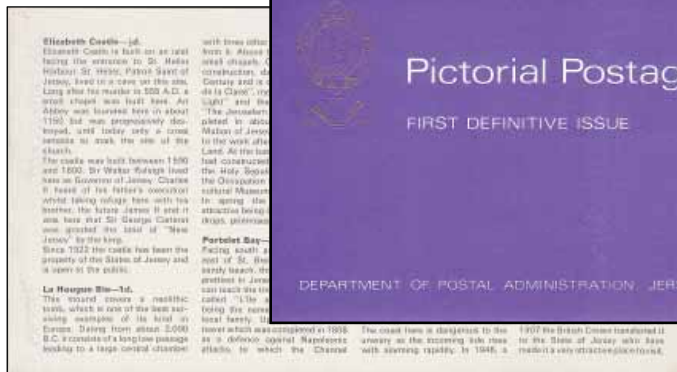
Can any member report another example of this particular label in their collection?



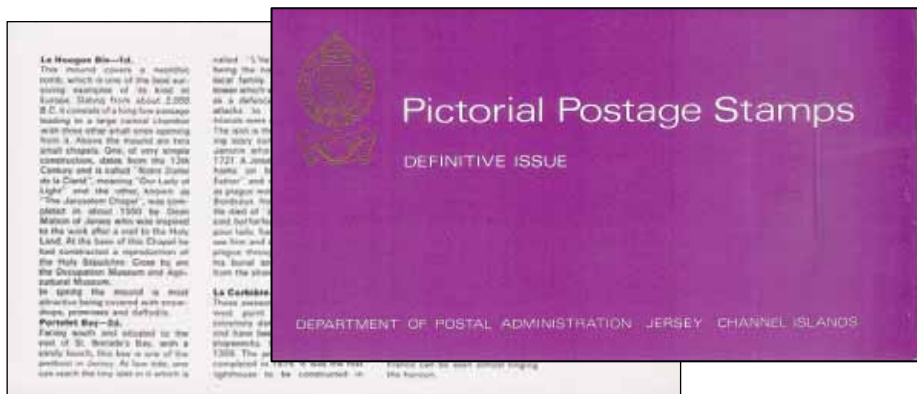
JERSEY 1969-74 DEFINITIVE PRESENTATION PACKS

by Ray B Dixon

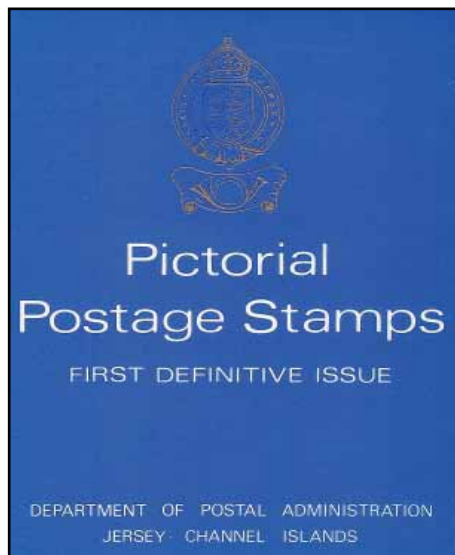
In the *SG Collect Channel Islands and IoM stamps* (29th Edition) it lists three presentation packs for the pre-decimal definitive issue. In the notes, it states that four packs were issued during the period the first definitive series of stamps were on sale, (October 1969 – February 1972). Details are as follows:-



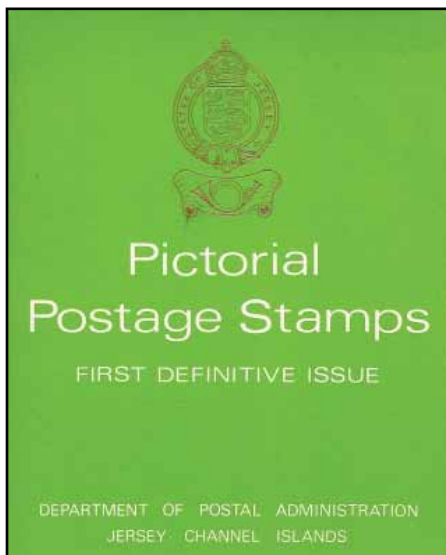
Although the covers illustrated give no details of the actual contents, the original pack, (in purple), contained eight values (½d to 9d). The early packs have no punched holes and both Low Value packs measure 217mm by 119mm. The Jersey emblem is embossed in gold, the original pack inside cover gives details of all the values including the ½d Elizabeth Castle stamp, this pack sold for 3s 7d, (18p).



With the ½d value sold out in October 1969 the decision was taken not to reprint the stamp due to impending decimalization. However, a new low value presentation pack appeared, (in pale mauve) in July 1970. This time only seven stamps were enclosed, (1d to 9d) and the inside text was modified accordingly.



**(Blue) 4 medium values, 1/- to 2/6d
Pack Sold for 7s 9d, (39p)**

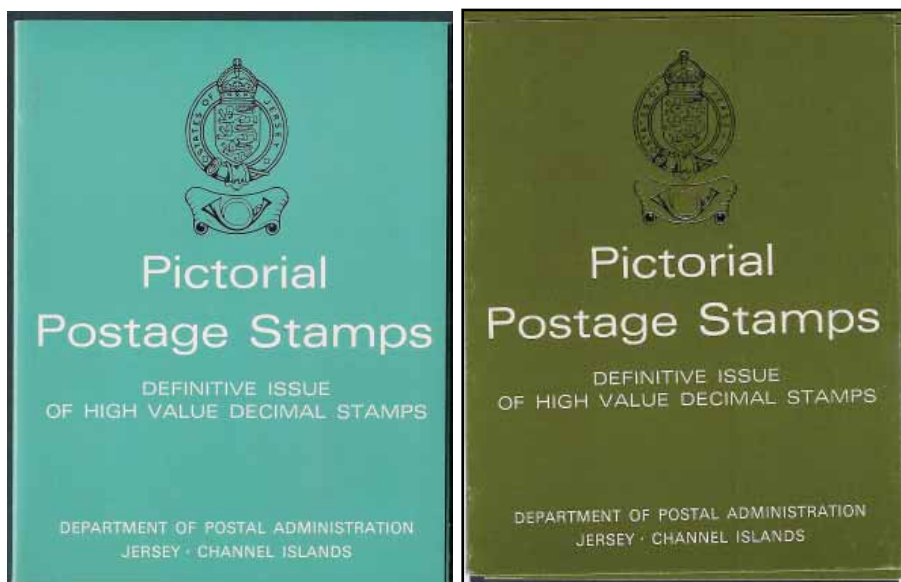


**(Green) 3 high values, 5/- to £1
Pack Sold for £1 16s, (£1.80p)**

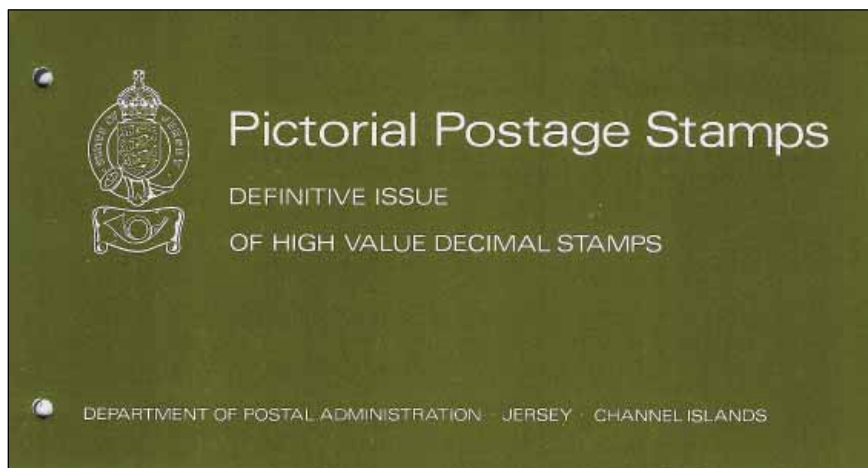
Both packs above were embossed with a gold Jersey emblem and measured 109mm x 140mm. No punched holes are present and similar to the two earlier low value pre-decimal definitive packs the covers give no clue to their actual contents. This was rectified when the decimal definitive packs were issued. The price in the *SG Collect CI IoM* catalogue is for a set of three – either low value pack. All of the pre-decimal packs along with the stamps were invalidated on the 14th February 1972. The printer of the pre-decimal definitive issue packs is not recorded, but I suspect they were printed at the House of Questa.

JERSEY DECIMAL DEFINITIVE PRESENTATION PACKS

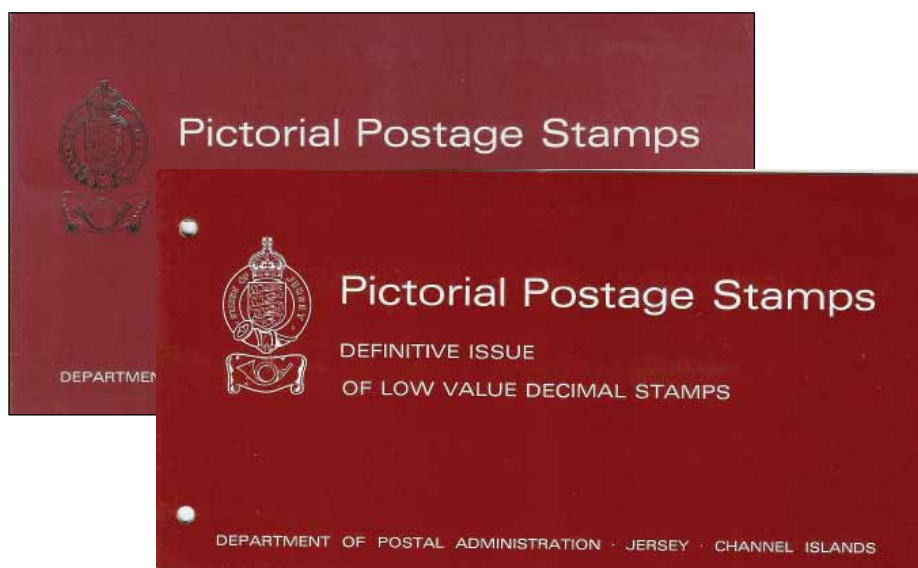
Also, in the 29th edition of the *SG Collect Channel Islands and IoM stamps* catalogue it lists four presentation packs for the decimal definitive issue. In the notes that follow the 1970-74 definitive listings it gives details of variations found in the subsequent printings of the presentation packs. The following narrative along with an illustration of each decimal definitive pack cover, will show, (I hope) a more complete picture. The first decimal pack released was the one for the high values, making its debut on the 1st of October 1970. Jersey was the first British Postal administration to issue any decimal stamps.

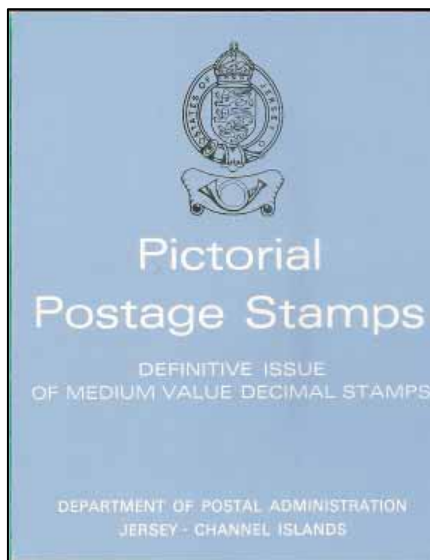


Each of these three high value packs contained four values, (10p to £1). Similar to the pre-decimal definitive packs with wrap around covers, the original pack, (in teal) and reprint, (in olive) both measured in at 110mm x 140mm. The Jersey emblems were each embossed in gold. Both packs were printed by Questa Colour Ltd at the House of Questa and sold for £1.85p.



Eventually the wrap cover packs were replaced with the 'standard' style of pack having two round punched holes and dimensions of 223mm x 115mm. The final version of the high value decimal definitive pack had a white printed Jersey emblem; it was produced by Paramount-Lithoprint. On the 15th of February 1971, (Decimal Day) Jersey Post Office released the low and medium value Decimal Definitive Packs.





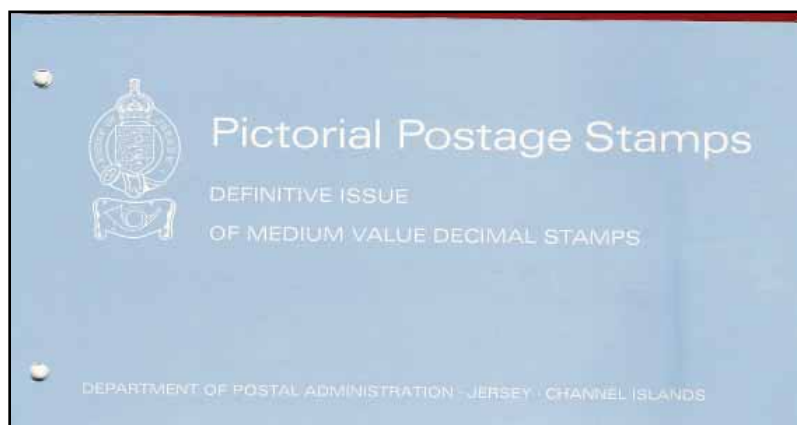
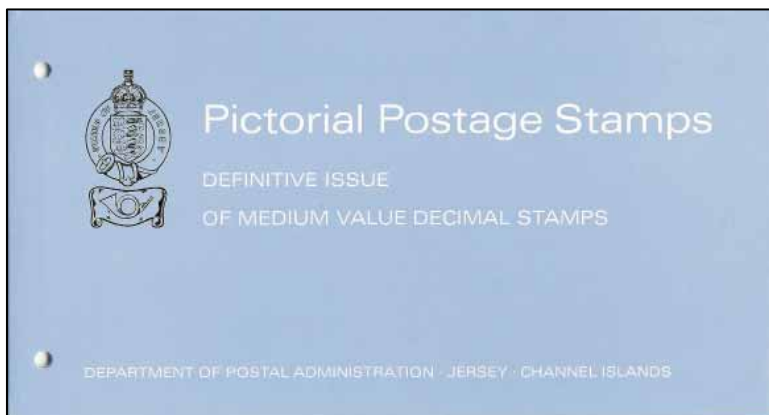
The original and reprint Low Value packs (in brown) measure 223mm x 115mm, both contained eight values, ($\frac{1}{2}$ p to 4p) and cost 23p. Both packs were printed at the House of Questa. The original pack had no holes and the Jersey emblem was gold embossed. The reprint has two round punched holes and the Jersey emblem is printed in white on the front cover.

The first Medium Value Decimal Definitive pack, (light blue) was in wrap covers, (110mm x 140mm), with a gold emblem and contained

four stamps, (5p to 9p), it was priced at 32½p.

On the 31st October 1974, three new values, (4½p, 5½p and 8p) were added to the decimal definitive range in order to accommodate changes in tariff. The medium value packs were re-issued in the larger format, (223mm x 115mm) in order to more readily display all seven stamps the pack now contained.

Both packs were printed at the House of Questa and received the two round punched holes for inserting into the standard presentation pack binder. The main visible difference between the packs is shown below, with the Jersey emblem in embossed gold and the reprint now showing the Jersey emblem in white. Both of the packs sold at a price of 53p.



The new 8p definitive was issued with PVA and PVA (D) gum. The (D) stands for Dextrine, which gave a green tinge to the adhesive. This in effect means that both of the above packs can contain either stamp.

The price in the SG catalogue is for four packs. This is made up from a Low Value Pack, (choice of two), plus the original Medium Value Pack and a High Value Pack, (choice of three). The fourth item from the set will be from either of the two packs illustrated above, with the three additional decimal definitives.

An unrecorded Foreign Relations Card FR/C/10

by Ron Brown

A previously unrecorded British Red Cross Foreign Relations Department card FR/C/10 has come to light, not mentioned by David Gurney in his

FR/C/10.

Foreign Relations Department,
Red Cross & St. John War Organisation,
The Lord Chamberlain's Office,
St. James's Palace, S.W.1.

Tel: Whitehall 3007.

Date as postmark.

In answer to your communication of 7. 7. 10.
will you kindly send the following details of
your missing relatives:- full names and last
known address (in block letters), and we will
endeavour to trace them for you. No private
correspondence can be forwarded at present.

We may have to communicate with a good many
offices here and abroad, so you must not expect
a reply for a considerable time.

Sympathising with your anxiety.
Yours faithfully,
S.J. WARNER.

 **SUPPORT THE RED CROSS**  **POST CARD** 

ADDRESS ONLY TO BE WRITTEN ON THIS SIDE

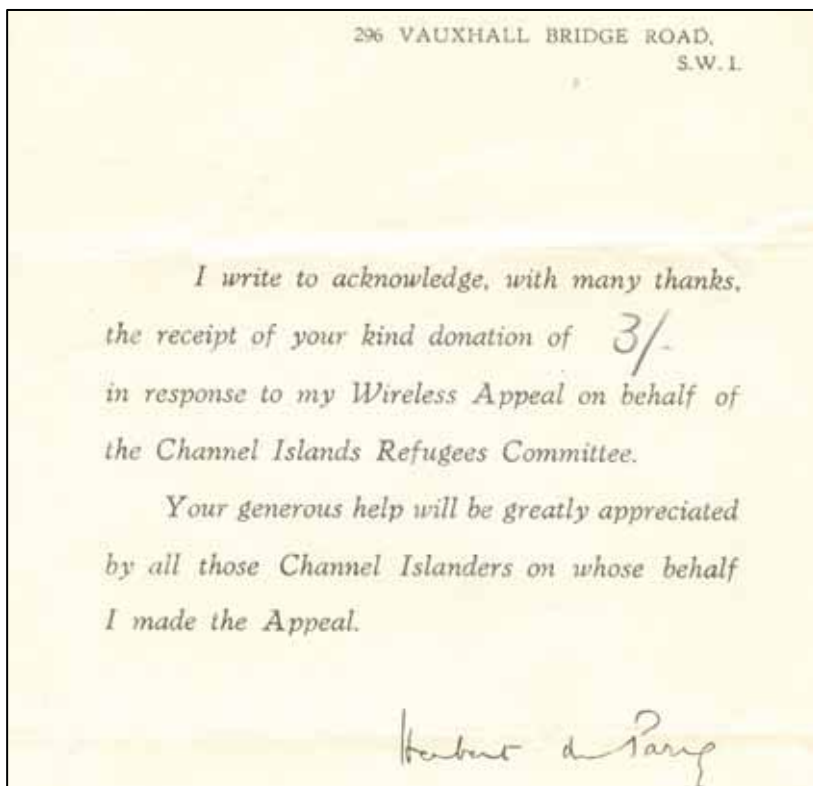


*Miss Constance Mayo.
c/o Miss Tubbo:
Glen Bove.
Upper Warren Ave:
Caversham Reading*

*David Gurney
Viggo
Ada
Cecilia
B. Nicholson*

1992 book *'The RED CROSS CIVILIAN POSTAL MESSAGE SCHEME with the CHANNEL ISLANDS during THE OCCUPATION 1940 – 45'*.

On the 7th July 1940 within a week of the German Occupation of the Channel Islands, Miss Constance Mayo wrote to the Red Cross no doubt enquiring as to the well being of her relatives who were in Jersey. As Miss Mayo's address is shown as C/O it is likely that she was a Channel Islands evacuee. The Red Cross at St James's Palace, London replied to Miss Mayo on the 7th July using this postcard FR/C/10 requesting further details in order that enquiries could be made.



By October 1940 Miss Mayo's address was in Sunningdale, Berks from where she had made a donation of 3/- to the Wireless Appeal on behalf of the Channel Islands Refugees Committee shown in this acknowledgement

form and its address side.



Another interesting and unrecorded wrapper from this correspondence shown below is from St. James's Palace to Miss Mayo in June 1944 then living in Reading. Can any member report further examples?

GUERNSEY MONTHLY MEETINGS

**CISS and RPSL members are
welcome to attend monthly
meetings in Guernsey, contact
John Triggs on 01481 725847 or
jtriggs@cwqsy.net for details.**

DISPOSAL OF YOUR CHANNEL ISLANDS' COLLECTIONS

If you or your relatives wish your collection to be sold due to change of interest, incapacity, or death the Society could assist you by arranging for its disposal within the C.I.S.S. through the Society's auctions and/or circulating Packets.

Benefits can be:

1. Best realisation of value to owner or dependents.
2. Opportunity for members to obtain items reasonably.
3. Society income enhanced with commission charged at 10% on sale by auction or packet plus 2% insurance.

Several collections have been successfully sold in this way in recent years to the benefit of the owners. In the first instance please contact the Secretary at rflemming@talktalk.net or ring 01455 613826

ANY UNWANTED SOCIETY JOURNALS?



Please do **not** throw your Journals or old Bulletins away. Send to the Membership Secretary, **Moirra Edwards** at **86, Hall Lane, Sandon, Chelmsford. Essex. CM2 7RQ** for recycling to other members.

Cover to Lieutenant General Graf von Schmettow

by Gerald Marriner FRPSL

Further to Ron Brown's article on page 30 of the December Journal Vol. 34 No.4, I illustrate a recent acquisition addressed to Lieutenant General Graf von Schmettow, Feldpost nr 24200 sent from Wiesegrade, Oels-Land, in

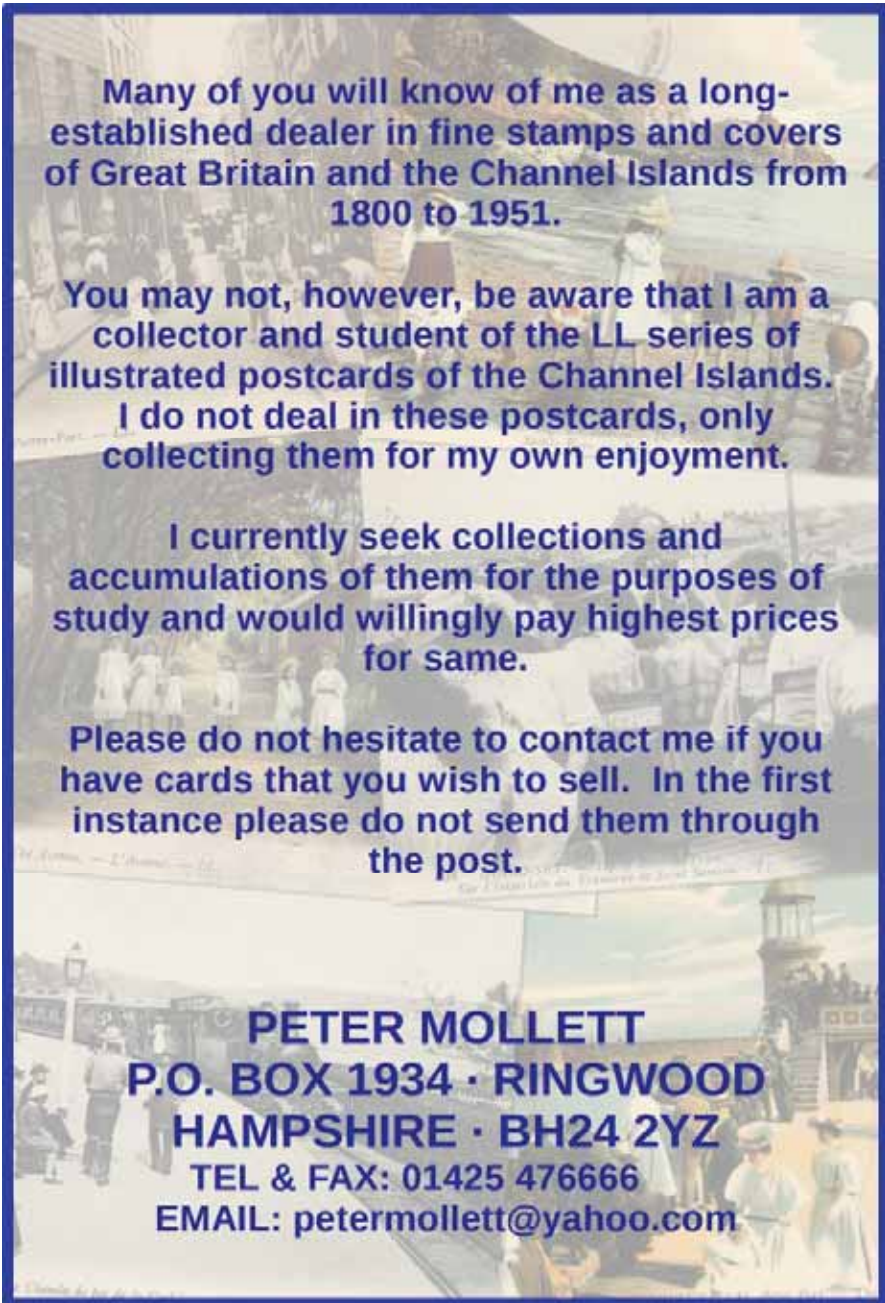


Germany.

The German airmail labels are cancelled with an OELS double circle datestamp for 21 June 1944. The cover is endorsed in pencil – 937 – a routing indicator and also '13 VII 44' in pencil. This is probably the arrival date in the Islands – (13th July 1944). The labels are cancelled with a three line boxed German cachet in violet, which reads (in English) **Unit of addressee/does not take part in the Air Mail Service of the Fieldpost/Air Mail Office.**

These cachets on Channel Islands mails are quite scarce.

(My thanks to Michael Wieneke for his kind assistance).

The background of the entire page is a collage of various vintage postcards from the Channel Islands. The postcards depict different scenes: a busy street with many people, a lighthouse on a rocky shore, a group of people in period clothing, and a coastal town. The text is overlaid on this collage in a dark blue, bold font.

Many of you will know of me as a long-established dealer in fine stamps and covers of Great Britain and the Channel Islands from 1800 to 1951.

You may not, however, be aware that I am a collector and student of the LL series of illustrated postcards of the Channel Islands.

I do not deal in these postcards, only collecting them for my own enjoyment.

I currently seek collections and accumulations of them for the purposes of study and would willingly pay highest prices for same.

Please do not hesitate to contact me if you have cards that you wish to sell. In the first instance please do not send them through the post.

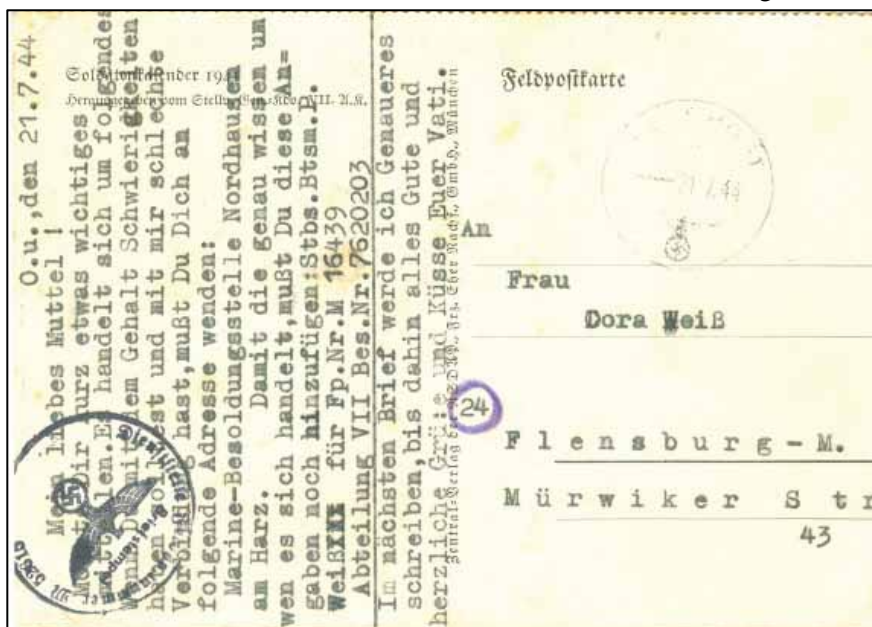
**PETER MOLLETT
P.O. BOX 1934 · RINGWOOD
HAMPSHIRE · BH24 2YZ
TEL & FAX: 01425 476666
EMAIL: petermollett@yahoo.com**

The importance of a Field Post Number

by Ron Brown

The items below were from Michael Wieneke's collection and he explains how they came into his possession – *“One day a colleague in the Investigation Service came into the office, a collector of German colonies, and was aware that I collected Channel Islands. He had a number of communications sent by his father, Paul Weiss, from the fortresses of both Guernsey and Lorient, but no corresponding items from Germany”.*

The reason for this lack of mail becomes clear from the following -



above dated 21 July 1944, we know that this was written when Paul Weiss was still in Guernsey.

Oberkommando der Kriegsmarine (1) Berlin W 35
Datum des Poststempels

305/123/wo

Nachstehende Nachricht wurde durch Funk aus der eingeschlossenen
Festung Lorient übermittelt.

Zu Deinem Geburtstag die allerherzlichsten Glück-
wünsche!

Luer V a t i

1. Antwortmöglichkeit von der Heimat zur Festung:
a) sofort mit anhängender Karte oder
b) durch Feldpostbrief in beschränktem Umfange an alte Feldpostnummer, soweit keine neue mit-
geteilt wurde, und
c) nur in dringenden Fällen (Geburten, Todesfall oder ähnliches) durch Rundfunk.
Derartige Nachricht in kurzer Form (in Telegrammstil) auf offener Postkarte richten an:
„Kameradschaftsdienst West, Gruppe PK“, Haus des Rundfunks, (1) Berlin-Charlottenburg,
Masurenallee. Dabei nicht vergessen, Dienstgrad, Vor- und Zuname des Empfängers und
die Festung, in der er sich befindet, anzugeben.
Briefe werden vom Kameradschaftsdienst nicht angenommen.

2. Bitte keine Rückfrage oder Antworten an Oberkommando der Kriegsmarine oder andere Dienst-
stellen der Kriegsmarine richten, da diese keine Nachrichten an Festungen weiterleiten können
und auch nicht mehr über das Schicksal der einzelnen Soldaten wissen, als mit dieser Karte
mitgeteilt wird.

This radio message card dated 24th January 1945 was sent from the fortress

Feldpostkarte

18
24.1.45-73
5

Frau

W e i s s

24 Flensburg-Mürwik
Mürwikerstr. 43

Oberkommando der Kriegsmarine

of Lorient and in which Paul Weiss sends congratulations to his wife for her birthday.

Lorient, located on the Atlantic west coast of France, was one of the major U-Boat bases with the massively fortified pens capable of holding thirty U-Boats. For a time Grand Admiral Karl Dönitz had his headquarters at Kernével facing the U-Boat pens.

Next is a postcard dated 14th March 1945 from Paul Weiss giving his Fp-Nr 52615 which was still the number of a Guernsey based unit although sent from fortress Lorient.

Absender: Dienstgrad: Ob.Rtsm. Paul Weiss M 52615 Vor- und Zuname: M.PP.A. Wiesbaden Feldpostnummer: <small>(Bezeichnung des Truppenteils verheben. Als Dienstgrad nicht Schütze, Pionier, Flieger usw. angeben, sondern nur Soldat, Gefreiter, Leutnant usw.)</small>		Feldpost 
In diesem Sinne moechte ich die wenigen Zeilen beenden. Seid alle recht herzlich gegruesst und gekuesst von Euerem Sohn und Bruder <i>Paul</i> <i>Boat</i>		An XXXXXXXXXXXXXXXXXXXX XXXXXXXXXXXX Familie XXXXXXXXXX Robert Weiss 19 Halberstadt in Tulpenweg 22 <small>Strasse, Hausnummer, Gebäudetitel, Stadtviertel oder Postkassenfachnummer</small> (3-45) Δ Fp 50 Din A 6

„Es ist gänzlich unwichtig, ob wir leben, aber notwendig ist, daß unser Volk lebt, daß Deutschland lebt.“
(Adolf Hitler am 1. 9. 38)

Interestingly on the reverse side of this card shown on the next page, Paul is complaining that he never receives any mail from home. Not surprising as his mail was being sent to Guernsey and there was no longer the means of forwarding it to Lorient.

Liebe Eltern u. Geschwister.

Seit langer Zeit habe ich keine Post mehr von Euch bekommen. Woran das liegt wissen wir nicht. Trotzdem will ich Euch heute einige Zeilen schreiben. Mir geht es soweit noch gut und hoffe es auch von Euch. Wenn ich wenigstens einmal von Dorle ein Lebenszeichen haette. Sollte diese Karte bei Euch ankommen, dann schreibt bitte auch meiner Dorle gleich, damit sie sich nicht unnoetige Gedanken macht. Ich habe ihr ja jah immer regelmaessig geschrieben, weiss aber nicht, ob die Post ihren Bestimmungsort wirklich erreicht hat. Wir sind ja froh, wenn wenigstens unsere Post bei Euch ankommt, wir wollen uns, auf unsere Post zu warten, noch gedulden bis bessere Zeiten in der Postbefoerderung eintreten. Im Uebrigen hoffe und wuensche ich, dass bei Euch auch noch alles in bester Ordnung ist. Ein Tag wird schon kommen; indem wir endlich einige Erleichterungen auf allem gebieten haben werden.

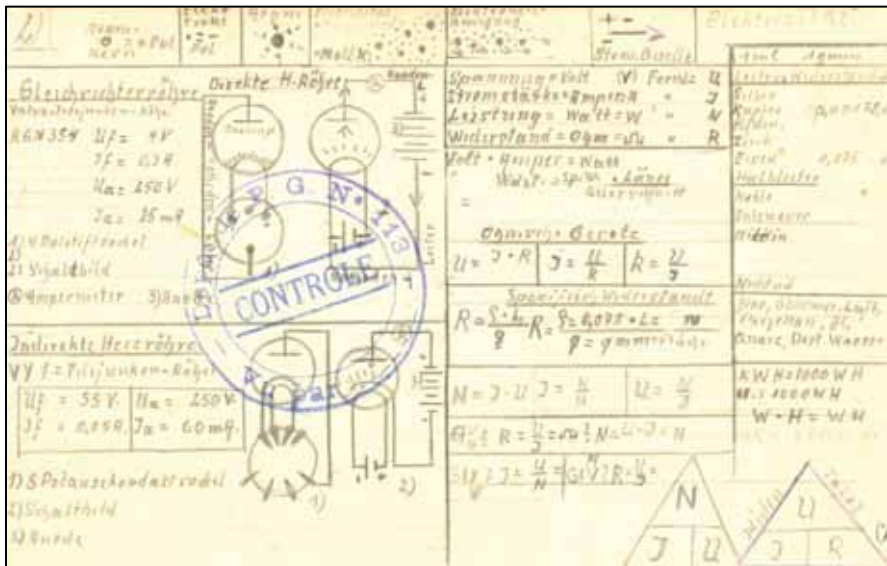
Allied forces reached the outskirts of the town on the 7th August 1944 and the last U-Boat departed on the 5th September. The town was by-passed by the advancing allies and, like the Channel Islands, Lorient held out as a 'festung' (fortress) until the end of the war when the garrison of some 15,000 German troops surrendered and became prisoners of war.

It is recorded that at least one Channel Islands 'fortress' flight came via Lorient!



A signed photograph of the Commander of the ship on which Paul Weiss served, (photo reduced in size). The insignia shows that he was a First Lieutenant with the very high decoration of a German Cross in gold awarded for personal bravery and was just one decoration below the Knight's Cross. He also wears the Iron Cross, so a well decorated Officer.

Interestingly the reverse side of this photograph shows detailed instructions in manuscript of how to make a radio set shown below.



1942 Jersey unsealed 1d letter rate

by Patrick Robbe



In 1942 due to the shortage of stamps and so as to help people in the country parishes, envelopes with an undated 2½d PAID handstamp applied were distributed to the Sub-Post Offices to cover the sealed letter rate when posted and the Head Post Office usually cancelled them.

For a very long time I have searched for the possible discovery that the unsealed letter rate of 1d should also exist and, at last, I have found this postcard with an undated 1D PAID handstamp with the Jersey single circle datestamp 4 AU/42 of the Head Post Office.

Can any member report a similar example of this JERSEY 1d PAID handstamp without date?

Jersey Home for Boys

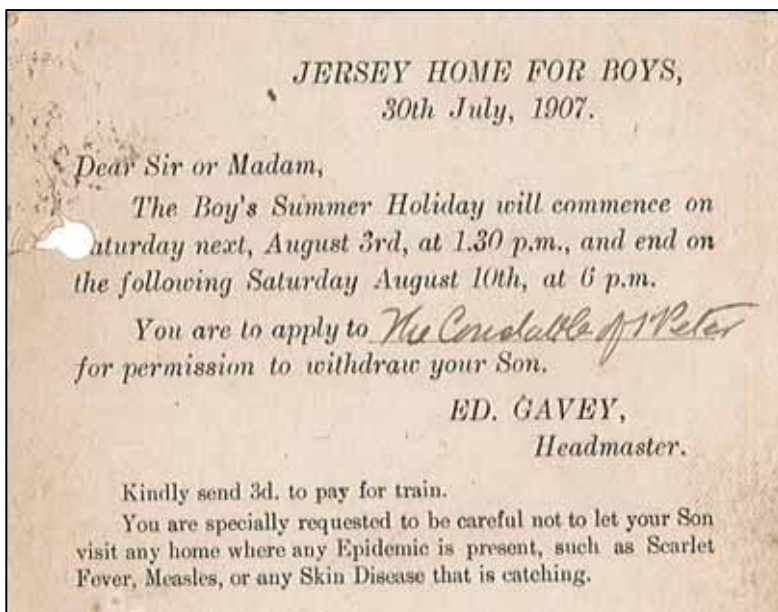
by Roland Young



I recently acquired this 1907 postal stationery card as I was curious about the Home and also felt it was cleanly postmarked when posted out of the Gorey, Jersey Sub-Post Office in July 1907.

I am intrigued to learn more and will be most interested if one of our Jersey members can provide more information about the home – when started and closed, and also its location.

Did it eventually evolve into the Haut de la Garenne which in recent years became the subject of a police investigation and much comment in the Press?



I will be most interested in any general and historical information that our Jersey members might be able to provide in regard to this card. For example when was Home first built and for what purpose? Has it always been a Home for Boys?

HELP PLEASE.



currently compiling.

Tony Peters will be most grateful if the present owner of this cover – see his article on page 20 in the last Journal – could contact the Editor please to provide the precise measurements of the AR hand stamp at bottom left for the purposes of a catalogue he is



Channel Island Postal BidSales

Glatigny Chambers, 1st Floor, Bosq Lane, St. Peter Port, Guernsey, GY1 2LP.

Tel: 01481 727353/Fax 01481 725981 Email: dtomlin@cipostalbids.co.uk

Postal Auction catalogues are produced 5 times a year and include a wide variety of Postal History and stamp issues. Including specialised listings.



We offer a wide range of Channel Islands and Isle of Man stamps in our Retail Catalogue.

Please visit our Website:

<https://www.cipostalbids.com> for all these and much more including Special Offers of rare and scarce items. Catalogue available by post on request.



PAST JOURNALS and BULLETINS.

The Society has a stock of past issues of the **Bulletins** and the Journal '**LES ILES NORMANDES**'. These are available at £1.00 each, and the Bulletins at £0.50 each, postage and packing is extra. The indices to both the Bulletins and Journals can be found on the website; www.ciss1950.org.uk

To enquire about past issues please contact Moira Edwards at 86, Hall Lane, Sandon, Chelmsford, CM2 7RQ, or email:

membership@ciss1950.org.uk

SERVICE SUSPENDED 1940 COVER

by David Gurney FRPSL

Whilst attending a postal history weekend recently I was shown this unusual 1940 cover addressed to Guernsey which was posted too late for the post to reach its destination as the Island had been occupied by the German armed forces for some days and postal services had been suspended.



Cover postmarked 3rd July 1940, Ipswich, England to Guernsey, Channel Islands.

This cover, from a well known philatelic dealer, was machine cancelled with 1d, the printed paper rate. However there are two boxed handstamps **SERVICE SUSPENDED** and **Undelivered for/ reason stated./1d POSTAGE DUE RETURN TO SENDER**, both in violet . There is a violet date stamp of 6 July 1940, but there are no marks on the back of the cover.

The Service Suspended (SS) mark is listed in Deery 2nd Edition 2015 (with number HS-UK-B7) on three covers known, the earliest dated 30/5/40 and the latest 28/6/40. See (Deery p63 and p92). All three were on covers to Jersey or Guernsey. This is clearly the fourth recorded and the latest usage.

A number of questions arise:

- 1) Where were the handstamps applied?
- 2) Why was a return fee of 1d charged. (The h/s is not listed in Deery). This is most unusual, the only time I have seen returned SS mail charged for?
- 3) Does this 1d postage due h/s appear on the other 3 covers known?
- 4) Is the SERVICE SUSPENDED h/s known on mail other than mail addressed to the CI?
- 5) If not why was this h/s exclusively used on CI mail as appears to be the case?
- 6) When was mail to the CI first suspended and this h/s applied?. The earliest example quoted by Deery is on a cover dated 30/5/40, a month before the Occupation. The h/s appears to have been replaced by a different h/s (Deery HS-UK-B8) again apparently exclusively used on CI mail (7 covers known dated 29/6/40 to 1/7/40)
- 7) Where was the date stamp of 6 July applied?

Answers to these questions and any other information would be very much appreciated to be on-provided.

New find – St. Marys, Jersey undated double arc in blue
by Guy Dandoy.

I can report a third example of this very scarce St. Marys, Jersey undated double arc handstamp shown below used in 1857 in dark-blue on the reverse of this envelope to Bordeaux from Jersey together with the blue Jersey dated arc of NO 27 57.



The envelope has been rated 4d as can be seen and has been cancelled with the Jersey circular 409 obliterator, has then received the red London transit datestamp on the reverse for NO 28 57 and then the Calais cds and red PD in circle (Paid to Destination) on the front. The Jersey marks on the reverse side are somewhat overstruck by the French transit and arrival datestamps.

David Gurney's book *The Postal History of the Jersey Sub-Post Offices* records the two previously known examples as blackish-green on an 1853 wrapper and blue-black on the reverse of an 1859 envelope.

WARDROP & COMPANY LIMITED

Philatelic Insurance Specialists

**The insurance for the serious collector providing
peace of mind at surprisingly low cost**

What is covered - Stamps, covers, envelopes, postcards, albums, philatelic literature, stamp boxes, and other articles of philatelic or postal history interest

Insurance against –All risks of physical loss or damage to property excluding wear, tear, gradual deterioration, moth, vermin, and damage or deterioration of any article directly caused while being worked upon or undergoing any process

Scope of cover – Anywhere UK (subject to prior advice of transits or locations other than the main dwelling for sums over £15,000) including postal or accompanied sendings

Basis of valuation – Market value

Cost –Anywhere UK	£3.75 reducing to £3.00 per £1,000 for higher sums
Normally Bank	£2.50 per £1,000 (30 days withdrawal any one year)
Bank only	£1.25 per £1,000

For a personal quotation and prospectus write to us at the address below,

telephone **01376 563764**, email john@wardrop.co.uk or visit our website www.wardrop.co.uk for more information including lots of links to other philatelic sites and an online proposal form.

**Wardrop & Co Ltd
PO Box 772, Coggeshall
COLCHESTER CO6 1UW**

Authorised and regulated by the Financial Conduct Authority

**LARGE POSTAL AUCTION
DURING
BOURNEMOUTH
WEEKEND MEETING
Friday 15th to Sunday 17th April 2015**

**Please don't delay in sending in your booking forms
for the meeting as only a few rooms left and this
has the prospect of being a very good event.**

**The auction has some exceptional Occupation,
Internee and Red Cross items together with a good
range of postal history, rare Herm proofs, interesting
and difficult WW1 items, scarce Allix & LL
and other better postcards.**

FORTHCOMING NEW STAMP ISSUES – 2016.

GUERNSEY POST

6th May 2016 Europa: Think Green

Single stamp	£0.64
First Day Cover	£1.84
Presentation Pack	£1.54

6th May 2016 Victor Hugo: Toilers of the Sea

Set of 6 stamps	£3.70
First Day Cover	£4.90

Presentation Pack	£4.60
Sheets of 10	£37.00
Prestige Booklet	£14.80

25th May 2016 Seasons (SEPAC)

Set of 4 stamps	£2.34
First Day Cover	£3.54
Presentation Pack	£3.24
Sheets of 10	£23.40

25th May 2016 World Stamp Show: Memorial Day Commemorative (Subject to Royal Approval)

Souvenir Sheet	
Miniature Sheet	£2.00
First Day Cover	£3.20
Presentation Pack	£2.90

ALDERNEY

25th May 2016 Her Majesty The Queen's 90th Birthday

Set of 6 stamps	£3.70
First Day Cover	£4.90
Presentation Pack	£4.60
Sheets of 10	£37.00
Prestige Booklet	£14.80

(Programme subject to change for operational reasons and without notice)

JERSEY POST

21st April 2016 The 90th Birthday of HM The Queen

Set of 10 stamps	£7.49
First Day Cover	£8.64
Presentation Pack	£8.64
Prestige Booklet	£14.98

29th April 2016 The 5th Wedding Anniversary of TRH The Duke & Duchess of Cambridge

Set of 5 stamps	£4.11
First Day Cover	£5.26
Presentation Pack	£5.26

Miniature Sheet	£2.00
First Day Cover	£3.15
Presentation Pack	£3.15

3rd May 2016 Europa 2016 – Think Green

Set of 4 stamps	£3.79
First Day Cover	£4.94
Presentation Pack	£4.94

11th May 2016 Einstein's Theory of General Relativity

Set of 6 stamps	£4.38
First Day Cover	£5.53
Presentation Pack	£5.53
Souvenir Sheetlet	£4.38
First Day Cover	£5.53
Presentation Pack	£5.53
*Miniature Sheet	£2.00
*First Day Cover	£3.15
*Presentation Pack	£3.15

*Overprinted version of the Miniature Sheet will be produced for the World Stamp Show New York (May 28)

Due to the loss of LVCR, Jersey Post now collects the appropriate rate of VAT on the various products at the point of sale and pre-pays HMRC on all orders entering the UK.

Post & packing charges CI - £1.85, UK - £1.94 (incl. VAT), Europe - £ 2.00 and the Rest of the World - £3.00

Note: This is the basic charge only.

Also, please be aware that from 2013, Jersey Post will be charging 5% GST to Jersey customers on CTO stamps (and complete CTO sheets) only.

CHANNEL ISLANDS

Postal History * Occupation * Revenues
Herm * Alderney * Sark * Jethou * Lihou

Independent * Errors and Varieties

Postcards * Ephemera from all periods

**ALL TO BE FOUND IN MY REGULAR
POSTAL AUCTIONS AND PRICE LISTS**

Send for the latest catalogue today (free of charge)
and see for yourself!

WINDSOR STAMPS

**1, Sausmarez Street, St. Peter Port,
Guernsey, GY1 2PT. C.I.**

Tel: (01481) 725209

VISITING GUERNSEY?

**THEN VISIT THE WINDSOR STAMPS
"COLLECTORS CENTRE"**

**1, Sausmarez Street, St. Peter Port, GY1 2PT
Tel: (01481) 725209**

*Stamps and Postal History * Postcards
Coins and Banknotes * Cigarette Cards
Antique Prints * Engravings * Maps, etc., etc.*

WELL WORTH A VISIT!

Channel Islands

at Auction

Grosvenor holds regular specialised public auctions of Great Britain stamps and postal history in central London, heart of the international philatelic market, achieving consistently high results. Interesting Channel Islands material features regularly.



Each auction is available to view, with additional illustrations, on our website, **www.grosvenorauctions.com**, and our exceptional printed catalogues are generously distributed, complimentary copies being available on request.

We work closely with collectors to ensure that presentation and prices meet vendors' highest expectations. Commission charges are generous, fully inclusive, and negotiable for valuable consignments. Contact **Andrew Williams** or **Glyn Page** today at the address below for further information on how Grosvenor can maximise the sale potential of your collection.

GROSVENOR

399-401 Strand 2nd & 3rd Floors London WC2R 0LT

T: 020 7379 8789 F: 020 7379 9737 E: info@grosvenor-auctions.co.uk

www.grosvenorauctions.com