



**CHANNEL ISLANDS  
SPECIALISTS' SOCIETY**

**March 2017**

**Volume 36 No.1**

# THE CHANNEL ISLANDS SPECIALISTS' SOCIETY

*Founded in 1950*

*for the study of the stamps and postal history of the Channel Islands*

## OFFICERS

**President: Alan N. Moorcroft FRPSL**

*E-mail: anmoorcroft@btinternet.com*

**Chairman: Dave Edwards**

*E-mail: bedenesteda86@btinternet.com*

**Secretary: Richard Flemming**

64, Falconers Green, Burbage. Hinckley. LE10 2SX. *E-mail: rflemming@talktalk.net.*

**Treasurer: Robert Porter**

3, Nursery Road, Hoddesdon. Herts. EN11 9LA. *Email: robertwporter@btinternet.com*

**Journal Editor: David Gurney FRPSL**

4, Kingscote, Tree Lane. Plaxtol Kent TN15 0QA. *Email: nangurney1@aol.com*

**Packet Secretary: John Triggs FRPSL**

“SUNNYSIDE”, La Gibauderie, St. Peter Port, Guernsey GY1 1XF. *E-mail: jtriggs@cwgsy.net*

**Auction Secretary: Nick Stuart**

3, Dudley Road, Walton on Thames, KT12 2JT *E-mail: - nick\_stuart@talk21.com*

**Membership & Subscription Secretary: Moira Edwards**

86, Hall Lane Sandon. Chelmsford. Essex. CM2 7RQ. *E-mail: membership@ciss1950.org.uk*

**Advertising & Press Officer: Stephen Wells**

The Hollies. 42, High Street, Tarring. Worthing. West Sussex. BN14 7NR

*E-mail: press@ciss1950.org.uk*

**Competitions Secretary: Alan N. Moorcroft FRPSL**

2, Ramparts Court, Bakers Lane, Braiswick. Colchester. CO4 5BJ

*E-mail: anmoorcroft@btinternet.com*

**CISS Internet address:- [www.ciss1950.org.uk](http://www.ciss1950.org.uk)**

Membership is open to all interested in Channel Islands stamps  
and postal history, postcards and ephemera.

Membership application forms can be obtained from the Membership Secretary.  
Exchange Packets are circulated regularly. A Postal Auction is held twice yearly.

A 36 page colour Journal is published quarterly.

Meetings are held three or four times a year in London and the Provinces.

**ADVERTISEMENT RATES IN LES ILES NORMANDES**

Outside back cover: £40.00. Full page: £30.00. Half page: £18.00

©The Channel Islands Specialists' Society

## SUBSCRIPTIONS and STANDING ORDERS

Will members please note the following points:-

1. Subscriptions, which are due on **1<sup>st</sup> January**, should be sent direct to **Moira Edwards** and **NOT** to any other officer of the Society. A Subscription Invoice will be sent in the December issue of the Journal.
2. All members may now pay by credit card or PayPal. The amount will be the appropriate subscription rate plus 5% for charges. Send your card details including number and expiry date to **Moira Edwards**, send your PayPal payment to **treasurer@ciss1950.org.uk**.
3. Overseas members may still pay by STERLING cheque drawn on a U.K. Bank. Non-sterling cheques and non-sterling currency notes will no longer be accepted. Money Orders in sterling currency are acceptable.
4. Members who have not paid by **14<sup>th</sup> February** are assumed to have resigned.
5. Standing Order forms should be **sent by members to their own bank** and not to the Subscription Secretary.

**The Subscription rates for the year 2017 are:-**

COUNTRIES	CLASS OF POSTAGE	ANNUAL SUBSCRIPTION RATES in Pounds Sterling
Great Britain	2 <sup>nd</sup> Class Letterpost	Ordinary Members: <b>£20.00</b> , or choosing an electronic copy of quarterly Journal in place of a posted hard copy: <b>£15.00</b> Juniors, Senior Citizens and Registered Disabled: <b>£10.00</b> , or choosing an electronic copy of the Journal: <b>£7.50</b> Life Members: <b>£10.00</b> , or choosing an electronic copy of the Journal: <b>£6.00</b>
Europe	Airmail Printed Paper/ Small Packet Rate	Ordinary Members: <b>£25.00</b> , or choosing an electronic copy of the Journal: <b>£15.00</b> Life Members: <b>£10.00</b> , or choosing an electronic copy of the Journal: <b>£6.00</b>
Rest of the World	Airmail Printed Paper/ Small Packet Rate	Ordinary Members: <b>£30.00</b> , or choosing an electronic copy of the Journal: <b>£15.00</b> Life Members: <b>£10.00</b> , or choosing an electronic copy of the Journal: <b>£6.00</b>

**PLEASE ADD A 5% SERVICE CHARGE TO ALL CREDIT CARD AND PAYPAL PAYMENTS**

We are pleased to welcome the following new Members:-  
2159 Marvin Murray, USA; 2160 Alan Whittaker, Hampshire.

## **CONTENTS**

Secretary's Clipboard.....	3
News of Members .....	3
London Meeting Report, 10th December 2016 .....	4
Guernsey Prestige Booklet Panes .....	6
Unusual Registered Letter from St Aubyns to Paris in 1899 .....	9
Late use (1946) of Jersey hexagonal Taxe mark in red ink on postcard to France.....	12
Another (1946) scarce use of the Jersey hexagonal Taxe mark in red ink on an airmail cover to Switzerland .....	13
The Silent Sentry.....	14
An interesting 1771 letter with POOL / SHIPLRE handstamp forwarded to Jersey by Clement Hilgrove of Southampton .....	18
Third Anniversary of Channel Islands Liberation stamps .....	20
Unrecorded Jersey Instructional mark .....	22
JERSEY - February 1920 'UNDELIVERED FOR REASON STATED' handstamp.....	23
St. Sampsons, Guernsey 1937 registered cover .....	24
1971 Rhodesian Emergency Mail Service to the Channel Islands .....	26
"Mint" Bradshaw Cards – Leftovers of the Guernsey RX Bureau.....	28
GUERNSEY Occupation 1d PAID datestamp used on a German Ausweis .....	32
Auction Report NS5 21st October 2016 .....	33
Forthcoming New Stamp Issues in 2017 .....	34

Whilst every care is taken in the production of this Journal statements expressed in articles in *LES ILES NORMANDES* are the sole responsibility of the author(s) and are not necessarily endorsed by the Editor or by the Channel Islands Specialists' Society neither of whom can be held responsible for the accuracy of the information therein or any consequence arising there from

## **EDITORIAL**

This edition includes a further variety of different articles on a diverse range of topics in which you may find much of interest.

Do try and book for the Cardiff weekend meeting 7th – 9th April when you will be able to view the whole postal auction and may be find a bargain!

## SECRETARY'S CLIPBOARD

by Richard Flemming

By the time you read this notice 2016 will be a distant memory and we will be well into 2017. The Society's Annual Competitions are already behind us as we look forward to the Member's Weekend meeting at the Jury Inn Hotel, Cardiff from 7<sup>th</sup> – 9<sup>th</sup> April. If you have not already confirmed a place, then it is vital that you contact Gerald Marriner as soon as possible to avoid disappointment. The programme has been organised and as usual we will have the 'Three Sheets to Tell a Story' on Friday evening following dinner, so get your thinking caps on and bring something to display. Also, if you are planning to bring a display to show at the meeting can you please provide me with a brief write-up of your material and bring it with you.

The full postal auction will take place in the afternoon and there will be some exciting lots on display and on offer.

The Annual General Meeting is scheduled for Saturday, 15<sup>th</sup> July; please note the change of date to that originally published on the Society's website. If you would like to have a question raised at the meeting could you send me your question at least two weeks before the meeting (1<sup>st</sup> July) so that we can possibly answer your question at the meeting.

Unless listed otherwise, all CISS meetings are held at the Royal Philatelic Society London, 41, Devonshire Place, Marylebone, London, with coffee and biscuits served at 10.30 (for an 11am start) and finishing about 4.30pm.

### **Forthcoming meetings:**

7th – 9th April 2017	Member's Weekend at Jury Inn Hotel, Cardiff
15th July 2017	AGM and members' displays. Theme; Open Philately
16th September 2017	Member's Meeting. Theme: Transport
9th December 2017	Member's Meeting. Theme; letters K and L

### **News of Members**

We are pleased to announce the achievement of Life Membership awarded to - 1571 Ron Brown, 1576 Guy Dandoy, 1582 David Russell, 1587 Jon Aitchison and 1588 Norman Wilkinson.

## CONGRATULATIONS TO COLIN TURNER

**Colin (Member No. 154), Kent, joined the Society in 1967.**

It is with very great pleasure that the Society recognises this achievement of 50 years of active membership and extends warmest congratulations and thanks for such continuing support.

## GUERNSEY MONTHLY MEETINGS

**CISS and RPSL members are welcome to attend monthly meetings in Guernsey, contact John Triggs on 01481 725847 or [jtriggs@cwgsy.net](mailto:jtriggs@cwgsy.net) for further details of where and when.**

### **London Meeting Report Saturday, 10<sup>th</sup> December 2016**

by Richard Flemming

Twenty-four members and guests attended the meeting which had a theme of 'Ending in 6' for those members brave enough to fill the display boards; we also accept members' new acquisitions as well. As we now traditionally start our meetings, **Nick Stuart** and **Gerald Marriner** provided us with a sixty-five lot room auction, plus 10 lots from the Wailen collection. Bidding was brisk and most of the lots were sold at or above reserve.

Once winning lots were collected and monies paid the remaining morning session consisted of members' displays. **Ron Brown** started proceedings with a fine display of some of his recent acquisitions including a 1943 'Return to Sender' that was sent to Belgium and a civilian cover sent to France bearing a Kriegsmarine handstamp [rare indeed]. There were several items of mail relating to Vichy France including an item that originated from the Channel Islands to Vichy France, but returned to

sender. However, Ron was able to display items of mail that did reach its destination in Vichy France. Of ephemeral interest was an OT travel voucher from Jersey to St. Malo and return.

**Robert Shaw** showed an interesting display of playing cards, basing his display on the fact that Robert de la Rue, who lived on Guernsey and was famous for his company printing postage stamps, also printed playing cards. Robert was also able to show examples of fare tickets including the Regent cable car and tickets for the small boat service from St. Peter Port to Fermain Bay.

**Gerald Marriner** also provided us with a 'recent acquisition' display including a letter dated 1<sup>st</sup> September 1945 from a Flt. Lt. Smith based at RAF Guernsey. Also included was a 1942 Organisation Todt cover from Guernsey to France, and then an 1890 unpaid letter from Jersey to Paris sent via St. Malo bearing a T/25 postage due handstamp. Gerald continued with a range of modern postage due (or unpaid marks) of the 1990s ranging from 34p to pay, rising to £1.12p.

The final display of the morning session was left to **Olaf Beecken** who showed a Deutsche Dienstpost (German official mail) envelope bearing a 6/9/1943 Guernsey machine cancel and a rare example of a family receipt Radio Message card for a radio message sent from the Channel Islands via Wilhelmshaven.

The afternoon displays commenced with **Jon Aitchison** focusing on 1966 including 1966 Churchill overprints on Herm's 1965 Liberation set, a Herm 1966 Europa set and a 1966 Jethou Norman year miniature sheet. The display concluded with two items of postal history including a Herm 1826 cover.

**Ron Osborne** showed several items ending in a 6 including an 1816 cover from Vlissingen to Guernsey sent via London, an 1846 1d red imperf bearing a POSTED AFTER/7 O'CLOCK AT NIGHT handstamp from London to Jersey. Also in the display was a 1946 envelope bearing 2 x 2½d Guernsey 'Arms' stamps addressed to Rotterdam and a letter from Alderney, also dated 1946.

**David Laurillard** focused his display on World War 1 material including a 1916 item headed 'Kriegsgefangensendung' [Warfare Consignment], a 1916 Xmas card and a November 1916 Active Service card. This was followed by **Dave Edward's** display of Guernsey postcards showing events that occurred during 1906. Included in the display were the Guernsey Cattle Show, the Summer Fete and the Guernsey Flower Show.

For 1926 there was the dedication of the Guernsey War Memorial and for 1936 Dave showed a postcard illustrating the 'Proclamation of Edward VIII' which, after his abdication, was followed by a postcard showing the 'Proclamation of King George VI'.

**John Triggs** started with a registered letter dated 1896 from A. Cameron in Jersey to Berlin, four items showing Jersey sub-post offices, all dated 1906, and 2x1d and 1x½d Occupation banknote paper adhesives tied to a 1946 envelope, concluding with a 1976 letter from Sark to Jersey. This display was followed by **Nick Stuart** who started his display with an 1846 JERSEY/SHIP LETTER handstamp on an entire addressed to Huth of London. This was followed by an 1866 letter from Guernsey to St. Malo via the Boite Mobile service, whereby the GB stamp was cancelled with a 3734 'lozenge' handstamp of St. Malo. Nick also provided an item of mail from the Dobree correspondence dated 1776 and bearing a scarce SMALO handstamp and concluded with a London to Guernsey letter dated 11<sup>th</sup> April 1946 and bearing a ½d 'Arms' stamp and 2x1d 'Arms' stamps of Guernsey. It was permissible to use the Arms stamps on the mainland and in the Channel Islands until 13<sup>th</sup> April 1946.

To conclude the afternoon displays, **Richard Flemming** showed three letters from the Dobree correspondence; one with the S.MALO handstamp, and another with the SMALO handstamp and finally the ST.MALO handstamp. To conclude his examples of 6d overseas rates, he showed a letter sent from Jersey to New Zealand dated 1879 at the 6d rate with 3x 1879 1d red (plate 177), a 2½d rosy-mauve (plate 15) and a ½d 'bantam' (plate 11).

## **GUERNSEY PRESTIGE BOOKLET PANES**

by Ray B Dixon

It may surprise the casual reader that the first Guernsey prestige booklet did not appear until July 1989; some 7 years after Jersey introduced their first prestige booklet in 1982. Those who currently collect GB prestige booklets now have to pay a premium of 95p per booklet, fortunately the Channel Island Prestige Booklet collector has, so far, escaped this surcharge.

The sizes of Guernsey's Prestige Booklets and panes are currently 163mm x 97mm and are stitched at the left. A few of Guernsey's 'full size' Airport booklet panes, (SG456a, 458a & 460a) are known with no stitching. An example from the 1989 Airport booklet, (SB39) is shown below. There is



also a line of roulettes at the left, between the stitched holes and GUERNSEY AIRPORT impression, which reduces the overall width by 10mm to 153mm. The line of roulettes, (not always present in every booklet) was in place to assist the quick removal of the booklet pane(s), without taking the whole booklet apart.



## Roulettes

The three Airport booklet panes are known on First Day Covers with full sized panes, (163mm x 97mm c/w Stitch holes) and smaller sized, (rouletted seperated) panes, (153mm x 97mm - no stitch holes).

So far I have not seen any of the full sized panes with no stitch holes, on a first day cover. Hopefully the membership will be able to set the record straight. These 'stitch hole free' booklet panes are not errors. Large Cover producers such as Benham, Bradbury and Mercury, place orders for 'full size' booklet panes, with no stitching, in order to produce their very own 'special' first day covers.

In addition to the 1989 Airport Anniversaries Issue, the four 1997 'Golden Wedding' booklet panes, (SG 754a/b, 756a & 758a) from booklet, (SG SB62) are known 'full size' with no stitch holes.

The Golden Wedding bottom pane, (SG754b) below are also known on Mercury 'Coin' first day covers.



When Guernsey was 'Incorporated' in 2001, they supplied a 'full size' £1



Booklet Pane, (SG927a) with no stitching holes, free to Philatelic Bureau Account holders. No other panes from the 2001 'Incorporation' booklet, (SG SB70) appear without holes.

So now we know of at least three Prestige Booklet issues that are known with this type of variety.

If any member can add or expand on this type of prestige booklet pane anomaly would you please advise the editor accordingly?

### **Unusual Registered Letter from St Aubyns to Paris in 1899**

by David Winnie

I recently acquired the registered letter illustrated below which, I believe, is unusual in two respects:



Firstly, the type of Registration Label used is one which I am not familiar with from the Islands. In 1894, if not earlier, the first type of adhesive labels used in England and Scotland, which consisted of the letter **R** in an upright oval, were restyled to include the words 'Fee Paid' and were printed in light blue. This type of label is shown on the cover with a manuscript '2' added for the registration fee and, as these labels were only

used at large Head Post Offices, it is to be assumed that it may have been added by the Head Post Office in St Helier.



Secondly, the routing does not pass the “makes sense” test. The markings are as follows:

Oct 11 1899 24mm single circle date stamp for ST. AUBYNS, on the rear as a receiving mark.

Oct 11 1899 REGISTERED / JERSEY oval cancellations applied by the Head Post Office in St Helier on front and back.

Oct 12 1899 circular cancellation for Brest on the front and Oct 13 1899 circular cancellation for Paris on the rear as an arrival mark.

Thus it would seem that the point of entry to France was Brest, but why would this cover not go via the usual routing from Jersey to Paris? My research has not thrown up a logical answer, thus why Brest?

Has any member a similar cover in their collection with a routing via Brest and can someone proffer an explanation for this please?



# **JERSEY and GUERNSEY**

**A large stock of all issues from their first issues in October 1969 to date. Our stock includes Mint, Used, FDC and Presentation Packs also a large Stock of Pre-Independent issues of Occupation and Regionals.**

**Send for our latest Price List today (Free of Charge) and see for yourself.**

**We also stock C. I. Postal History & Postcards  
L.L. and Allix wants list welcome.**

**G. ROBBE LTD    PTS**  
**YORK CHAMBERS**  
**YORK STREET**  
**ST HELIER JERSEY JE2 3RQ**  
**TEL 01534 723084 FAX 01534 767680**  
**E.MAIL: [robbestamps@hotmail.com](mailto:robbestamps@hotmail.com)**



## Late use (1946) of Jersey hexagonal Taxe mark in red ink on postcard to France by Henri Chartier



I have recently acquired this interesting postcard from Jersey to Paris, France posted on the 6<sup>th</sup> August 1946 showing a strike in red ink of the Jersey hexagonal Taxe mark for 25 denoting the deficiency in centimes.

David Gurney mentions that The Stanley Gibbons Channel Islands Postal History Catalogue describes the introduction of this mark on page 66 stating 'The Universal Postal Union decided in 1875 that underpayment on mail passing from one country to another should be indicated by striking a large letter "T" for Taxe) on the item. Under this system Jersey introduced a series of four hexagonal markings for underpaid mail to France (Type J151) as illustrated. The initial handstamps showed the figures 5, 10, 15 or 25 denoting the deficiency and not the surcharge in centimes. Four further values in this range were introduced in 1907 being 20, 30, 40 and 50'.



The SG catalogue only depicts this handstamp used in black ink and notes usage between 1890 and 1913 at that time – some 26 years ago when first compiled. The use in a red ink and such a late use in 1946 is certainly

unusual, but not unknown as Gerald Marriner can also record an example in his collection used in red ink in 1946 too shown in the following article.

**Another (1946) scarce use of the Jersey hexagonal Taxe mark in red ink on Airmail cover to Switzerland** by Gerald Marriner FRPSL.



Further to Henri Chartier's article I illustrate above in reduced format another example of the scarce **T25/JE** handstamp. This was introduced in 1890 and pre-1900 examples are recorded in black.

This cover was sent airmail from Jersey to Zurich. The correct airmail letter rate was 5d and the postage was made up with a KGVI 2d definitive and 3 x 1d Jersey Occupation Views stamps which were invalid for postage in April 1946, hence this cover was 3d deficient in postage.

Initially the Jersey Post Office applied a **1d / TO PAY** surcharge mark thinking that this cover was addressed to England. On realising that the destination was Switzerland the Jersey Post Office also applied the hexagonal **T25 / JE** handstamp in a red ink. My records show that most of the surcharge marks applied by the Jersey Post Office between 1946 and 1952 were in red. Can any other member report a similar usage?


## The Silent Sentry

by Ron Brown FRPSL

During the German occupation a farmer, Henry Ahier, (born 14 February 1891) was resident with his wife, Edith, and children Christine, Philip and Donald at Seymour Farm, Gorey. Part of his farm lay within a German restricted military area around Victoria Tower which was a Martello tower constructed in 1837 on which the Germans had placed a small anti-aircraft gun. It is apparent from the following correspondence that Henry Ahier went about his business without obtaining the local German guard's permission to enter the restricted area!

Telephone Central 301.

In your reply  
please quote Ref. **2/3/7/1/0.**



STATES OF JERSEY.  
DEPARTMENT OF AGRICULTURE,  
VICTORIA CHAMBERS,  
CONWAY STREET,  
ST. HELIER,  
JERSEY, C.I.

May 28th. 1942.

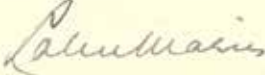
H. Ahier, Esq.,  
Seymour Farm,  
Gorey.

Sir,

The German Authorities have asked me to  
complain that you have been entering your fields,  
which are barred by the German Authorities, without  
first having obtained permission from the Guard. The  
German authorities require that you will for the future  
ask permission of the Guard before entering any of your  
fields which they have barred.

I am, Sir,

Your obedient servant,

  
Secretary.



The Germans complained to the States Authorities which resulted in the above letter from the Department of Agriculture instructing Mr Ahier *'for the future ask permission of the Guard before entering any of your fields which they have barred'*.



The envelope enclosing the letter had been re-used by the Department of Agriculture due to shortages of stationery during the German Occupation.

The original envelope had first been addressed to the Department of Agriculture with a 1d definitive with Jersey machine cancellation of the 12<sup>th</sup> March 1942. A printed REPLY adhesive label was then added addressed to H.Ahier, Esq., Seymour Farm, Gorey and affixed to the face of the envelope which was cancelled with a 2½d Jersey machine meter mark, the 1d being the open letter rate and the 2½d the sealed letter rate.

On the next page is a pass issued by the Germans with the photograph of Henry Ahier presumably, but with his wife's details, to access the restricted area of Victoria Tower. The pass below is similar for his daughter Christine and translates as *'Mss. Christine Ahier, born 11 August 1923, is allowed to enter the outer area of Stützpunkt (= stronghold, base) Victoria Tower. Oberleutnant und Batteriechef'* issued by the Staff of II. Detachment of 319 Artillery Regiment.



Mrs. Edith Lister, geb.  
am 29. Dezember 1902;  
ist berechtigt, den  
Stützpunkt Victoria  
Tower zu betreten.

*H. E. Stein*  
Stützpunkt u. Tower, Chef.



Mrs. Christine Anwar,  
geb. am 11. August 1923  
ist berechtigt, den  
Stützpunkt Victoria Tower  
zu betreten.

*H. E. Stein*  
Stützpunkt u. Tower, Chef.

Adjacent to the Ahier's farm was a sentry box and the children Philip and Donald were used to seeing the German sentry in the box, so just for fun at the end of the Occupation, when they came across a German uniform, they stuffed it with straw to replace the real thing!

In due course the lower part of the sentry box rotted and the top part was cut off to be used as a dog kennel. Finally this too rotted and was consigned to a bonfire!



My thanks to David Gurney, Olaf Beecken and Michael Wieneke for their assistance in compiling this information.

**An interesting 1771 letter with POOL/SHIPLRE handstamp forwarded to Jersey by Clement Hilgrove of Southampton.**

by Luc Content.

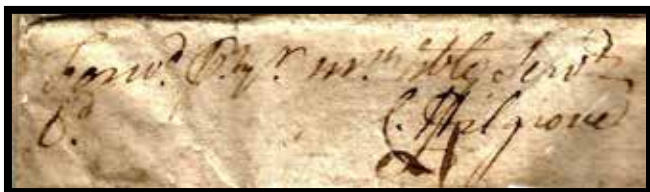
I show below this entire letter I've recently acquired which unfortunately isn't in a very good shape as the ink in the address is slightly faded.



The letter gives no indication of where it was written or sent from, but is in French and was landed at Poole where, as an inward ship letter, it was rated at 5d by the General Post Office being the inward Ship Letter charge of 1d (10/10/1765 - 5 George III, c25) plus the inland postage of 4d being more than 80 miles Poole-London-Southampton (01/06/1711 (9 Anne, c10) for a single page. Note the fine **POOL / SHIPLRE** struck in black ink.

This letter has been referred to David Gurney and Alan Moorcroft for their views on the routing of the letter by the General Post Office once landed in Poole as there are two possibilities which are not clear. The letter appears to be a single sheet with no evidence of an enclosure in the text hence a routing via London as suggested fits with the rate of 5d, but the absence of a London transit mark could indicate it did not take this route. An alternative routing could be

direct from Poole to Southampton via Ringwood which was very close and linked to Poole by a short post road. The charge could thus be explained as 1d Ship Letter and 4d as a double for two post stages (1765 Act) only assuming it may have been a double sheet letter or assessed as such by the General Post Office in Poole. On arrival in



Southampton the letter was passed to the Merchant/Agent, Clement Hilgrove, for forwarding to

Jersey where upon Hilgrove added his Agent's 1d charge making a total of 6d as evidenced here in the second line of his abbreviated endorsement. I am interested in other comments from members on the routing as the condition and creasing of the letter is not good.

## BUYING

### Channel Islands' Regionals and £sd Independence period

Commercially used covers, parcel pieces, errors, proofs, printers' waste, artwork, Regionals used in the UK after 31st October 1969, anything unusual.

Also buying Channel Island collections, postal history, revenues, locals, telegrams, almost anything. Please let me make you a good offer.

**Jon Aitchison**

Old Tithe Hall, Start Hill, Bishop's Stortford CM22 7TF,  
United Kingdom.

Telephone: UK 01279 870488. Email: [britishlocals@aol.com](mailto:britishlocals@aol.com)

## Third Anniversary of Channel Islands Liberation stamps

by Richard Wheatley FRPSL

On 10 May 1948 two stamps were issued to commemorate the third anniversary of the liberation of the Channel Islands. The actual anniversary date was 9th May, however, in 1948 the 9th was a Sunday, so they were issued a day later. The stamps depict Islanders gathering vraic (seaweed) which the Islanders use as a fertiliser.

The stamps were on sale in Guernsey and Jersey, and also at the London Chief Office plus the Regional Head Offices of: Bristol, Edinburgh, Leeds, Manchester, Birmingham, Cardiff and Belfast. They were withdrawn from sale on 30 September 1948. Altogether 5,933,779 of the 1d stamps were sold and 5,398,129 of the 2½d.





These two First Day covers have been sent to Boonton, New Jersey in America. The three 1d stamps pay the foreign 3d surface letter rate up to 1 ounce (1 May 1940 to 1 October 1950, but the Post Office have been most generous in allowing the ½d underpayment on the other cover! The stamps were intended to pay the 1d rate for sending newspapers abroad and 2½d for the inland letter rate up to 2 ounces.

At the time the stamps came in for a bit of stick, the designs being likened to "refuse carts", or "muck carts" pulled by "dejected horses" all under "gloomy clouds"!

References: The Postal Museum website, formerly B.P.M.A.



## Channel Island Postal BidSales

Glatigny Chambers, 1st Floor, Bosq Lane, St. Peter Port, Guernsey, GY1 2LP.  
Tel: 01481 727353/Fax 01481 725981 Email: [dtomlin@cipostalbids.co.uk](mailto:dtomlin@cipostalbids.co.uk)

Postal Auction catalogues are produced 5 times a year and include a wide variety of Postal History and stamp issues. Including specialised listings.



We offer a wide range of Channel Islands and Isle of Man stamps in our Retail Catalogue. Please visit our Website: <https://www.cipostalbids.com> for all these and much more including Special Offers of rare and scarce items. Catalogue available by post on request.



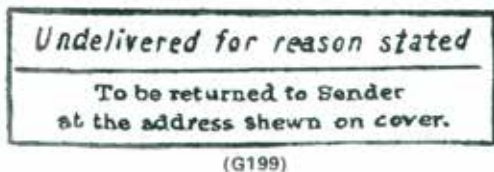
## Unrecorded Jersey Instructional mark by Tony Peters

In Journal Vol. 34 No.4 on page 26 I showed an unknown Jersey instructional mark.

Today I have the same cachet on a local Jersey letter dated 26.10.1931 shown below –



The two instructional marks show no differences although this cachet was first used between 06.02.1896 and 26.10.1931.



This mark is recorded by the Stanley Gibbons Postal History Catalogue for Guernsey (G199) in violet for 1916, but not for Jersey.

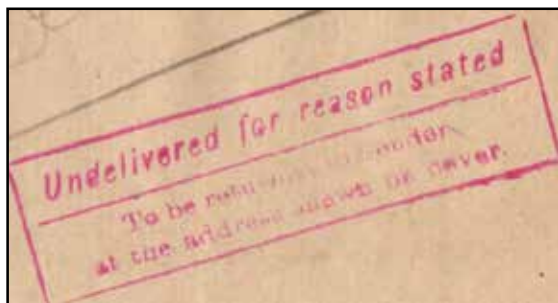


# **JERSEY - February 1920 'UNDELIVERED FOR REASON STATED' handstamp by Gerald Marriner FRPSL**



I illustrate above in reduced format an unusual KGV 1½d postal stationery envelope posted locally in Jersey addressed to Grouville. The addressee was deceased. The cover received a fine Grouville 1920 datestamp and was returned to the sender - Phoenix Assurance Company Ltd.

This cover received a similar three line 'Undelivered for reason stated' boxed handstamp similar to that described by Tony Peters in his article on the previous page. However this example was applied in red.



This handstamp appears identical to **Type G199** for Guernsey in the **Stanley Gibbons Channel Islands Postal History catalogue**. The lower two lines read 'To be returned to Sender / at the address shewn on cover.'

At the time when this SG catalogue was written in 1990 such a marking had not been recorded for Jersey. However, this is a very scarce handstamp

and it is the only example I have seen for Jersey in 40 years of collecting apart from the two now recorded by Tony Peters.



Note the black ink  $\frac{1}{2}$ d charge mark alongside the KGV embossed stamp.  $1\frac{1}{2}$ d was the correct letter rate until the end of May 1920. So was this cover returned to sender unsealed - in which case it would attract a  $\frac{1}{2}$ d surcharge?

An interesting cover and I will be interested to learn whether any member can report a similar example.

### St. Sampsons, Guernsey 1937 registered cover.

by Guy Dandoy

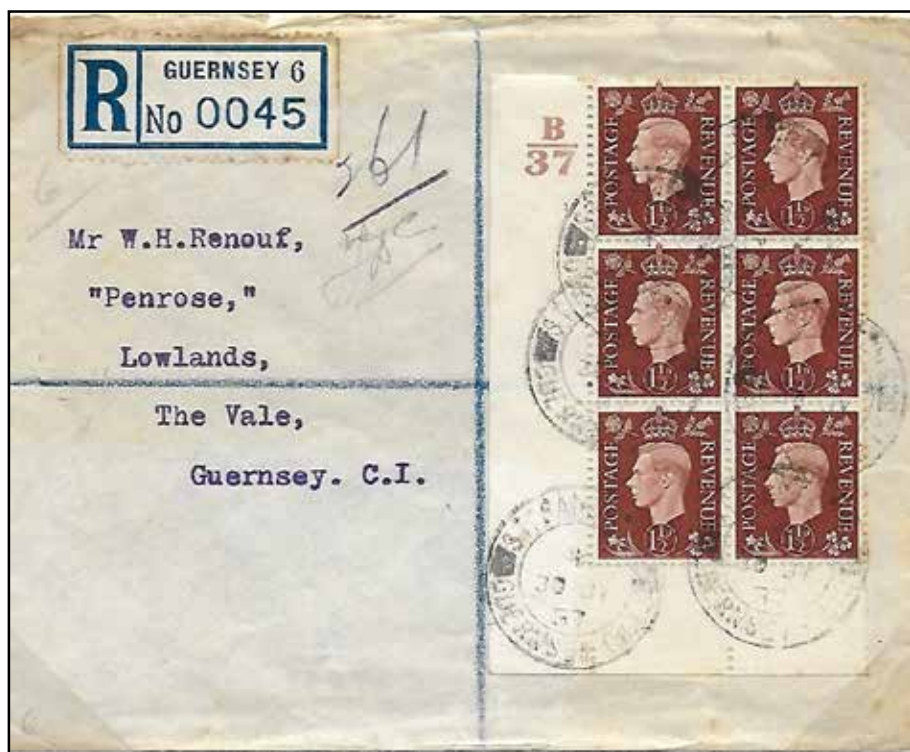


I recently purchased this registered letter sent from St Sampson's on the 10<sup>th</sup> May 1937 with the type 2 registration label.

David Gurney refers in his book *The Postal History of the Guernsey Sub-Post Offices* to the earliest date of the Type 2 registration label being the 30<sup>th</sup> July 1937 so my registered cover pre-dates this by some two and a half months as the first known date with the Type R2 label.

On my cover the large **R** is 11mm high and the **N** of No. 4mm high showing a slight variance which it is felt by both David Gurney and David Winnie to represent the use of an earlier different roll of the Type 2 labels.

Another early example from the same correspondence has been sent to me by David Winnie from his own collection which I am showing below.



This example of David's is dated the 30<sup>th</sup> July 1937 and it can be seen that the registration label is very similar in sizes of the letters, but with a

different sequence of number when related to the dates of use thus suggesting the labels are from different rolls.

## 1971 Rhodesian Emergency Mail Service to the Channel Islands

by David Gurney FRPSL

I have been asked by Dave Trathen, a member of the Rhodesia Study Circle, if any of our members can throw any light on the route into Europe that this service took during the British Postal Strike of February/March 1971?





To enable Rhodesians to get mail to the UK during the strike period the Rhodesian postal authorities set up an 'Emergency Mail Service' and for an extra 50 cents post was sent to Europe to be picked up by agents who carried the mail to the UK for delivery.

Little knowledge of the EMS is known as the methods and details were kept secret. The two envelopes shown addressed to Guernsey have no postal clues and beg the question how did they reach their destination? With earlier Rhodesian mail to the Channel Islands in the 'illegal' period of 1966 and 1970 all such mail was routed to the United Kingdom en route to the Channel Islands.

During February/March 1971 this could not have been done. There is a suggestion that Rhodesian mail went to Brussels, but Paris is also a possibility.



Can any member help with this interesting routing question please and let the Editor know by telephone 01732 810036 or by email nangurney1@aol.com?

## **ROLE OF MEMBERSHIP SECRETARY**

With effect from the July 2017 AGM the position of Membership Secretary will become vacant and applications are sought from members of the Society to take on this interesting job. It is a requirement of the position that you are computer literate with good website skills to keep in contact with the membership of the Society. Attendance at London based Committee meetings is not necessarily required. For further details contact Secretary Richard Flemming (tel: 01455 613826) at [rflemming@talktalk.net](mailto:rflemming@talktalk.net) or Membership Secretary Moira Edwards (tel: 01245 472813) at [membership@ciss1950.org.uk](mailto:membership@ciss1950.org.uk)

### **“Mint” Bradshaw Cards – Leftovers of the Guernsey RX Bureau** by Leopold Mayr

In the last couple of years more and more Bradshaw Cards have appeared on the market that do not fit into the common pattern we know of such cards. They were never posted, although some of them obviously had been prepared for use. This, and the fact that these cards are being offered by three or four antique and stamp dealers living in Guernsey, seems to indicate that recently someone acquired the stock of Bradshaw Cards that had become leftovers when the system with the notification cards ended in May 1942.

What we have are the following three types of unused cards:

## The Controlling Committee of the States of Guernsey.

A communication for you has been received through the  
International Red Cross, from \_\_\_\_\_

If you will call at 38, High Street, between 10 a.m. and  
12.30 p.m. on any morning, or between 2 p.m. and 4.30 p.m. on any  
afternoon (except Thursday), you can see the communication and send  
a reply not exceeding 25 words.

Please reply to this notice immediately. Even if you do not wish  
to answer the communication, let the Red Cross Department know or  
you will delay the return of many messages.

GEO. A. BRADSHAW,  
*Red Cross Department.*

**IMPORTANT.—Please bring this Card with you.**

GANF DU RO: PRINTING WORKS

Fig. 1 - completely mint cards, in particular of the types with the printed addresses "38, High Street" and "1, Market Street", but others might exist.

## The Controlling Committee of the States of Guernsey.

A communication for you has been received through the  
International Red Cross, from \_\_\_\_\_

If you will call at ~~38, High Street~~ <sup>1, MARKET</sup> Street, between 10 a.m. and  
1 p.m. on any morning, or between 2 p.m. and 4 p.m. on any  
afternoon (except Thursday), you can see the communication and send  
a reply not exceeding 25 words.

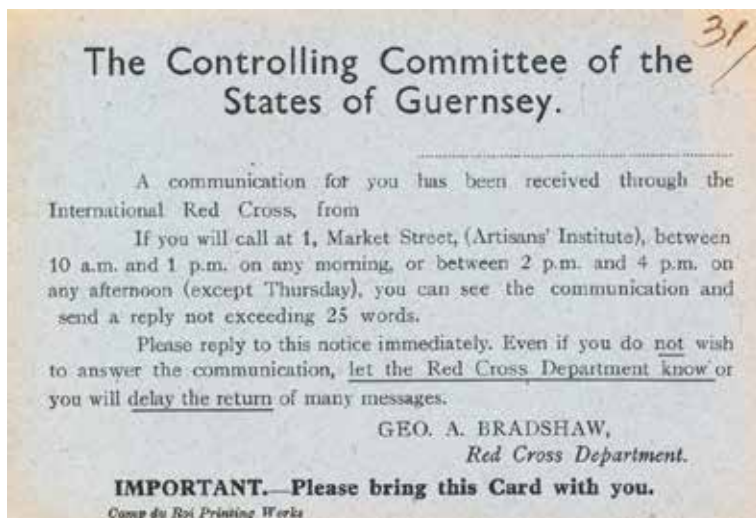
Please reply to this notice immediately. Even if you do not wish  
to answer the communication, let the Red Cross Department know or  
you will delay the return of many messages.

GEO. A. BRADSHAW,  
*Red Cross Department.*

**IMPORTANT.—Please bring this Card with you.**

GANF DU RO: PRINTING WORKS

**Fig. 2** - cards with printed address "9-11, High Street", mint, except for the address changed to "1, Market Street" in manuscript.



**Fig. 3** - cards as above, but with the indication of a batch number and no other endorsements.

All three cards depicted have a completely blank reverse.

The cards of **Fig. 2** mentioned above were obviously prepared for use when the Bureau changed its location, but were eventually not needed.

The situation with cards of **Fig. 3** is somehow similar. When a new batch arrived, cards were prepared by writing the batch number into the top right corner, followed by a slash, as we normally find on Bradshaw Cards. The actual serial numbers of the forms were to be endorsed at a later stage, but when too many cards with a batch number had been prepared, they became leftovers. I have seen blank cards with batch numbers in the range of 86 to 101, and do not bother about these. But, the really strange thing is that I also know of three cards with the batch numbers "31" and "42". They are all on cards that show the printed address "1, Market Street". The RX Bureau moved there on 18 December 1941, but the batches 31 and 42 were actually handled in March and May 1941, more than half a year earlier, when the Bureau was still located in Elizabeth College. The only reason I can think of is that the secretaries made a slip of the pen when they wrote



the batch numbers and therefore the cards were not used. Still, I am not really happy with this explanation. Anyone with a better theory?

## **LARGE ROOM AND POSTAL AUCTION**

### **DURING THE CARDIFF WEEKEND**

**MEETING SATURDAY 8<sup>TH</sup> APRIL 2017**

**Auction will include some rare Occupation items, internee and Red Cross, very scarce LL and Allix postcards, etc.**

## **DISPOSAL OF YOUR CHANNEL ISLANDS' COLLECTIONS**

- If you or your relatives wish your collection to be sold due to change of interest, incapacity, or death the Society could assist you by arranging for its disposal within the C.I.S.S. through the Society's auctions and/or circulating Packets.

Benefits can be:

1. Best realisation of value to owner or dependents.
2. Opportunity for members to obtain items reasonably.
3. Society income enhanced with commission charged at 10% on sale by auction or packet plus 2% insurance.

Several collections have been successfully sold in this way in recent years to the benefit of the owners. In the first instance please contact the Secretary at [rflemming@talktalk.net](mailto:rflemming@talktalk.net) or ring 01455 613826.

**GUERNSEY Occupation 1d PAID datestamp used on a German Ausweis by Gerald Marriner FRPSL**

**AUSWEIS.**  
**PERMIT.**

(Nur gueltig in Verbindung mit der Identitaetskarte).  
(Valid only in connection with Identity Card).

Der Inhaber dieses Ausweises: Jean Louis Blanchard.  
The holder of this Permit: \_\_\_\_\_

Identitaetskarte Nr. 1020302 Wohnhaft: Wajunga, Portlinter, Vale.  
Identity Card No. \_\_\_\_\_ Address: \_\_\_\_\_

Ich berechtige die Sperrzone fuer Zivilisten bei Grand Tourne, Grand Tourne, Grand Tourne  
is authorised to enter the Prohibited Zone for Civilians at: \_\_\_\_\_

Amarreurs, Picquerel, Port Grat, Pequeries & Saline Bays.

zum Zwecke Seetanggewinnung.  
for the purpose of gathering seaweed.

von  $\frac{1}{4}$  Stunde nach Sonnenaufgang bis  $\frac{1}{4}$  Stunde vor Sonnenuntergang zu betreten.  
from  $\frac{1}{4}$  hour after sunrise until  $\frac{1}{4}$  hour before sunset.

Dieser Ausweis ist gueltig bis 31. 5. 44.  
This Permit is valid until the 31. 5. 44.

Guernsey, den - 1. VII. 1943  
Guernsey, the - 1. VII. 1943

Nebenstelle Guernsey  
der  
Feldkommandantur 515.  
*[Signature]*  
KVR  
Major

Stempel.  
Stamp.  
S 4  
bis L

Further to Christine Earle's Ausweis article in the December Journal Vol.35 No.4 on page 29 I illustrate above in reduced format another unusual example of a Guernsey 1d PAID handstamp also used during the Occupation period on a German Ausweis (Permit) issued to Mr Blanchard of The Vale. The PAID datestamp only includes the day and month with no year date. However, from the permit this can be seen to be 1943. The permit allowed the holder to collect seaweed. It expired at the end of May 1944.

It appears that the Ausweis was folded horizontally in half - the two loose edges being secured with thin tape. It then entered the postal service and received the circular 1d PAID handstamp at the Guernsey Head Post Office ~ 1d being the correct printed matter rate. I would have thought that many German Ausweis forms were posted to their holders in a similar way, but examples of PAID handstamps on Ausweis forms appear to be scarce used in Guernsey as most were collected directly in person from FK 515.

As a matter of interest can any other member report a similar usage?

**Ed note....**Since the December Journal was published Karsten Runkel has reported three examples in his collection issued for the purposes of collecting seaweed, cultivating glasshouses and grazing cattle, Bob MacDonald and Ron Osborne have also reported similar examples, but these permits remain scarce and unusual with the 1D PAID datestamps.

## PAST JOURNALS and BULLETINS.

The Society has a stock of past issues of the **Bulletins** and the Journal '**LES ILES NORMANDES**'. The Bulletins are available at £0.50 each, and the Journals at £1.00 each, postage and packing is extra. The indices to both the Bulletins and Journals can be found on the website; [www.ciss1950.org.uk](http://www.ciss1950.org.uk)

To enquire about past issues please contact Moira Edwards at 86, Hall Lane, Sandon, Chelmsford, CM2 7RQ, or email:

[membership@ciss1950.org.uk](mailto:membership@ciss1950.org.uk)

### Auction Report NS5 21st October 2016 by Nick Stuart.

This auction generated sales of £13,213.40 and was the best one of the last five auctions with 77 bidders including several newish members.

There was a wide range of material from 14 members some of which was unusual such as the secret Occupation newsheets which were typed on very thin paper, sourcing the news from the BBC using clandestine radio sets. A

jailable offence if the listeners were caught or someone was found with a copy of the news sheet.

All sections of the auction sold well with most items having several bidders. One of the key sections was a large number of Allix cards, virtually all of which were sold with prices ranging from the reserve to well over £100 due to fierce bidding. Allix card 87, a coloured mint card of La Plage sold for £100. Card 98 of St. John's Church Jersey, postally used, went for £140 and another postally used card, Allix 132 of St. Saviour's Church and Parish Hall sold for £110. More Allix cards will also be included in the April 2017 postal auction to be held at the Cardiff weekend.

The whole range of World War I material was sold and most of the Occupation stamps. There were some cracking items which are rarely available such as the block of 12 Guernsey ½d Arms stamps unmounted mint from the top of the sheet, the right hand margin had a diagonal perforation due to a paper fold which resulted in one stamp being imperforated. This sold for £250, more than double the estimate. A strip of three Guernsey ½d Arms stamps unmounted mint which was imperforated between stamps two and three sold for £475 and an unmounted mint vertical pair imperforate went for £150.

There was, also, a good range of Jersey Occupation stamps with the star item being a ½d Arms unmounted mint vertical pair imperforate (SG1b) with certificate which sold for £450.

The Jersey ½d views half size essay signed by Cortot fetched £350 and the 3d Views proof also signed by Cortot sold for £160; both well over their estimates.

Having a good number of members supplying material helped to provide an interesting range of attractive items so I urge members to look out their surplus items and send them to Gerald Marriner for inclusion in future auctions.

**The next large CISS auction will be a combined postal and room auction to be held at the Members Weekend in Cardiff 7<sup>th</sup> to 9th April 2017. All the lots will be on display.**

## **FORTHCOMING NEW STAMP ISSUES – 2017.**

### **GUERNSEY POST**

#### **4th May 2017 EUROPA: Castles (NVI'S)**

Set of 6 stamps	£4.06
First Day Cover	£5.26
Presentation Pack	£5.26
Miniature Sheet	£3.00
First Day Cover	£4.20
Presentation Pack	£3.90
Sheets of 10	£40.60

#### **17th May 2017 Sepac: (Handcrafts) - The Guernsey Jumper \***

Set of 4 stamps	£2.56
First Day Cover	£3.76
Presentation Pack	£3.46
Sheets of 4	£25.60

### **ALDERNEY**

#### **17th May 2017 Alderney Scenes\***

Set of 6 stamps	£4.06
First Day Cover	£5.26
Presentation Pack	£4.96
Prestige Booklet	£16.24
Sheets of 10	£40.60

### **JERSEY POST**

#### **11th April 2017 Jersey Ancient Artefacts**

Set of 8 stamps	£8.45
First Day Cover	£9.60
Presentation Pack	£9.60
Prestige Booklet	£16.90

**12th May 2017 The Royal Legacy of Queen Victoria – King George VI**

Set of 6 stamps	£4.61
First Day Cover	£5.76
Presentation Pack	£5.76
Miniature Sheet	£2.00
First Day Cover	£3.15
Presentation Pack	£3.15

**7th June 2017 Lions Clubs International – 100th Anniversary**

Set of 6 stamps	£4.61
First Day Cover	£5.76
Presentation Pack	£5.76
Miniature Sheet	£2.00
First Day Cover	£3.15
Presentation Pack	£3.15

**14th June 2017 Durrell and Darwin Initiative**

Set of 6 stamps	£4.61
First Day Cover	£5.76
Presentation Pack	£5.76
Miniature Sheet (printed on FSC sycamore)	£3.00
First Day Cover	£4.15
Presentation Pack	£4.15

Due to the loss of LVCR, Jersey Post now collects the appropriate rate of VAT on the various products at the point of sale and pre-pays HMRC on all orders entering the UK. Post & packing charges CI - £1.85, UK - £1.94 (incl. VAT), Europe - £ 2.00 and the Rest of the World - £3.00. Note: This is the basic charge only.

Jersey Post charges 5% GST to Jersey customers on CTO stamps (and complete CTO sheets) only.

## **C.I.S.S. PUBLICATIONS**

**Our current stock of merchandise at  
reasonable prices.  
However postage is extra and will be invoiced.**

***Write to:*** C.I.S.S. Book Sales at 64, Falconers Green, Burbage.  
Hinckley. Leics. LE10 2SX or Email – [rflemming@talktalk.net](mailto:rflemming@talktalk.net)

- |   |        |
|---|--------|
| 1. The Channel Islands Sub-Post Offices and their Postmarks (292pp)   | £6.00  |
| 2. The Post Office in the Smaller Channel Islands (154pp)   | £12.00 |
| 3. The Postal History of the Guernsey Sub-Post Offices (265pp)  | £10.00 |
| 4. Red Cross Postal Message Scheme with the Channel Islands<br>during the Occupation 1940-45 (389pp)  | £8.00  |
| 5. Islanders Deported Part 11 (246pp)   | £4.00  |
| 6. The Postal History of the Jersey Sub-Post Offices (376pp)<br><u>(This book is reduced from £27 to £15 as staples are slightly rusting)</u> | £15.00 |
| 7. Registered Mail of the Guernsey Sub-Offices 1968-1990 Vol 2  | £3.00  |
| 8. Registered Mail of the Guernsey Sub-Offices 1968-1990 Vol 3  | £3.00  |
| 9. Channel Islands Revenues (Fifth Edition) – 1997  | £6.00  |
| 10. Jersey & Guernsey Slogan Postmarks of the 20 <sup>th</sup> Century (85pp)   | £7.50  |

**Also available:-**

**Binders** for '*Les Iles Normandes*' holding 12 issues @ £4.50 each or  
three for £12.50 plus postage.

**Society Ties:** In blue or maroon with CISS motif @ **£8.00** each plus postage.

Payment may be made by Visa/Access/Mastercard.or Paypal.

A service charge of 5% is made in accordance with the  
Credit Card (Prices Discrimination) Order.

Please quote your card number, expiry date and card settlement address.

**Please do not send payment until you receive an invoice  
for the cost of your order plus the postage and packing.**

# Channel Islands

## at Auction

Grosvenor holds regular specialised public auctions of Great Britain stamps and postal history in central London, heart of the international philatelic market, achieving consistently high results. Interesting Channel Islands material features regularly.



Each auction is available to view, with additional illustrations, on our website, **[www.grosvenorauctions.com](http://www.grosvenorauctions.com)**, and our exceptional printed catalogues are generously distributed, complimentary copies being available on request.

We work closely with collectors to ensure that presentation and prices meet vendors' highest expectations. Commission charges are generous, fully inclusive, and negotiable for valuable consignments. Contact **Andrew Williams** or **Glyn Page** today at the address below for further information on how Grosvenor can maximise the sale potential of your collection.

## GROSVENOR

399-401 Strand 2nd & 3rd Floors London WC2R 0LT

T: 020 7379 8789 F: 020 7379 9737 E: [info@grosvenor-auctions.co.uk](mailto:info@grosvenor-auctions.co.uk)

[www.grosvenorauctions.com](http://www.grosvenorauctions.com)