



**CHANNEL ISLANDS  
SPECIALISTS' SOCIETY**

**June 2017**

**Volume 36 No.2**

# THE CHANNEL ISLANDS SPECIALISTS' SOCIETY

*Founded in 1950*

*for the study of the stamps and postal history of the Channel Islands*

## OFFICERS

**President:** Alan N. Moorcroft FRPSL

*E-mail: anmoorcroft@btinternet.com*

**Chairman:** Dave Edwards

*E-mail: bedenesteda86@btinternet.com*

**Secretary:** Richard Flemming

64, Falconers Green, Burbage. Hinckley. LE10 2SX. *E-mail: rflemming@talktalk.net.*

**Treasurer:** Robert Porter

3, Nursery Road, Hoddesdon. Herts. EN11 9LA. *Email: robertwporter@btinternet.com*

**Journal Editor:** David Gurney FRPSL

4, Kingscote, Tree Lane. Plaxtol Kent TN15 0QA. *Email: nangurney1@aol.com*

**Packet Secretary:** John Triggs FRPSL

“SUNNYSIDE”, La Gibauderie, St. Peter Port, Guernsey GY1 1XF. *E-mail: jtriggs@cwgsy.net*

**Auction Secretary:** Nick Stuart

3, Dudley Road, Walton on Thames, KT12 2JT *E-mail: - nick\_stuart@talk21.com*

**Membership & Subscription Secretary:** Moira Edwards

86, Hall Lane Sandon. Chelmsford. Essex. CM2 7RQ. *E-mail: membership@ciss1950.org.uk*

**Advertising & Press Officer:** Stephen Wells

The Hollies. 42, High Street, Tarring. Worthing. West Sussex. BN14 7NR

*E-mail: press@ciss1950.org.uk*

**Competitions Secretary:** Alan N. Moorcroft FRPSL

2, Ramparts Court, Bakers Lane, Braiswick. Colchester. CO4 5BJ

*E-mail: anmoorcroft@btinternet.com*

**CISS Internet address:- [www.ciss1950.org.uk](http://www.ciss1950.org.uk)**

Membership is open to all interested in Channel Islands stamps  
and postal history, postcards and ephemera.

Membership application forms can be obtained from the Membership Secretary.  
Exchange Packets are circulated regularly. A Postal Auction is held twice yearly.

A 36 page colour Journal is published quarterly.

Meetings are held three or four times a year in London and the Provinces.

## ADVERTISEMENT RATES IN LES ILES NORMANDES

Outside back cover: £40.00. Full page: £30.00. Half page: £18.00

©The Channel Islands Specialists' Society

## SUBSCRIPTIONS and STANDING ORDERS

Will members please note the following points:-

1. Subscriptions, which are due on **1<sup>st</sup> January**, should be sent direct to **Moira Edwards** and **NOT** to any other officer of the Society. A Subscription Invoice will be sent in the December issue of the Journal.
2. All members may now pay by credit card or PayPal. The amount will be the appropriate subscription rate plus 5% for charges. Send your card details including number and expiry date to **Moira Edwards**, send your PayPal payment to **treasurer@ciss1950.org.uk**.
3. Overseas members may still pay by STERLING cheque drawn on a U.K. Bank. Non-sterling cheques and non-sterling currency notes will no longer be accepted. Money Orders in sterling currency are acceptable.
4. Members who have not paid by **14<sup>th</sup> February** are assumed to have resigned.
5. Standing Order forms should be **sent by members to their own bank** and not to the Subscription Secretary.

**The Subscription rates for the year 2017 are:-**

COUNTRIES	CLASS OF POSTAGE	ANNUAL SUBSCRIPTION RATES in Pounds Sterling
Great Britain	2 <sup>nd</sup> Class Letterpost	Ordinary Members: <b>£20.00</b> , or choosing an electronic copy of quarterly Journal in place of a posted hard copy: <b>£15.00</b> Juniors, Senior Citizens and Registered Disabled: <b>£10.00</b> , or choosing an electronic copy of the Journal: <b>£7.50</b> Life Members: <b>£10.00</b> , or choosing an electronic copy of the Journal: <b>£6.00</b>
Europe	Airmail Printed Paper/ Small Packet Rate	Ordinary Members: <b>£25.00</b> , or choosing an electronic copy of the Journal: <b>£15.00</b> Life Members: <b>£10.00</b> , or choosing an electronic copy of the Journal: <b>£6.00</b>
Rest of the World	Airmail Printed Paper/ Small Packet Rate	Ordinary Members: <b>£30.00</b> , or choosing an electronic copy of the Journal: <b>£15.00</b> Life Members: <b>£10.00</b> , or choosing an electronic copy of the Journal: <b>£6.00</b>

**PLEASE ADD A 5% SERVICE CHARGE TO ALL CREDIT CARD AND PAYPAL PAYMENTS**

We are pleased to welcome the following new Members:-  
2161 Mark Liquorish, Shropshire; 2162 Trevor Nichols, Spain.

## CONTENTS

Secretary's Clipboard.....	3
News of Members .....	3
CISS Competitions - 11th February 2017.....	5
London Meeting Report Saturday, 11th February 2017.....	6
Weekend Meeting Report, Cardiff 7th – 9th April 2017.....	7
New modern 2003 Guernsey stamp error .....	9
A new Jersey cachet discovered.....	10
Mulready envelope to London from St Aubin, Jersey dated 8th June 1840 .....	11
St. Aubin – ½d black Postal Stationery envelope? .....	14
Naval Harbour Surveillance Office 1942 Censor cachet .....	15
An early example of the Jersey dated arc with inverted '4'.....	17
Cobo Milk Permit .....	19
A new Guernsey slogan postmark.....	20
More 36mm skeleton datestamps used at St. Peters, Jersey .....	22
Undated double arc for Grouville, Jersey .....	26
Unusual Registered Letter from St Aubyns to Paris in 1899 .....	27
ORGANISATION TODT – TRAVEL VOUCHER.....	27
LISBON SUMMARY FORM from IRELAND .....	29
French 'CHARGE' mark applied to mail from the Channel Islands .....	31
CISS Auction Report for April 2017.....	32
Post and Go Update .....	33
Forthcoming New Stamp Issues in 2017 .....	34

Whilst every care is taken in the production of this Journal statements expressed in articles in *LES ILES NORMANDES* are the sole responsibility of the author(s) and are not necessarily endorsed by the Editor or by the Channel Islands Specialists' Society neither of whom can be held responsible for the accuracy of the information therein or any consequence arising there from

## EDITORIAL

Another new edition with hopefully much of interest to all.

Do try and attend our meeting on the Saturday 15<sup>th</sup> July with the theme on displays in Open Philately and after lunch the **Annual General Meeting** at which your views and votes are most important!

Welcome to the June edition of *Les Iles Normandes*. For myself the Cardiff Member's Weekend was a great success and my thanks to Gerald Marriner for arranging the Jurys Inn Hotel. The joint room and postal bid auction was mind boggling with some of the prices realised, especially in the post card section. The final sum is not yet available, but it seems as if we may be approaching, or exceeding, record sums of money realised. Thank you to all those of you who supplied lots and a big thank you to those who bid on the items. Plans are already in place for the 2018 Member's Weekend meeting in Jersey.

Back to reality now and our next Member's meeting will be on Saturday, 15<sup>th</sup> July 2017 at **the Royal Philatelic Society London** followed after lunch by the **Annual General Meeting (AGM)** to be held at 2.00pm and all members are urged to attend. The morning will be taken up with a mini room auction followed by members' displays, the theme being 'Open Philately' or any recent acquisitions you may have purchased. **If you wish to raise a question at the AGM please let me have a copy of your question at least two weeks before the 15<sup>th</sup> July so that I can forward it to the appropriate committee member for an answer.**

### Forthcoming Meetings:

15th July 2017	Member's meeting Theme: <b>Open Philately</b> followed by <b>AGM at 2pm</b>
16th September 2017	Member's meeting: Theme: <b>Transport</b>
9th December 2017	Member's meeting Theme: <b>Letters K and L</b>

### News of Members

David Gurney writes most regrettably our life member, **Brian Brookes FRPSL**, passed away peacefully on the 24th May 2017, after a long battle with cancer. I have known Brian for approximately 47 years and we have lost a great postal historian both in Channel Islands' terms and also in other collecting areas particularly with his various interests including Martinique.

Brian joined our Society in 1968 and has built up a large and very interesting collection. He was a Fellow of both the Royal and the Society of Postal Historians being also a Past President of the latter. He will be sorely missed both for his knowledge and also as a quite exceptional collector.

Warmest congratulations to our member, **Alan Holyoake FRPSL**, who has been elected as a signatory to the Roll of Distinguished Philatelists at the annual Board of Election meeting on 23rd March 2017.

Congratulations also to our following members for their successes in competitions at Spring Stampex:

**Alan Holyoake** a Large Gold for UK Registration during the 1s. and 6d  
Fee periods

**Jon Aitchison** a Gold for Ballon Monte and other Siege of Paris Mail to  
the Channel Islands

**Jon Aitchison** a Gold for Egyptian Officially Sealed Mail

**Jon Aitchison** a Gold for The Telegraph Service in the Channel Islands

**Graham Booth** a Gold for Mail carried by Brunel's Steamship the 'Great  
Britain'.

**Chris King** a Gold for Denmark and the Napoleonic Wars

**Jon Aitchison** a Large Vermeil for Egyptian Cassette Post

**Jon Aitchison** a Vermeil for Egyptian Interpostal Seals

**Jon Aitchison** a Vermeil for Greetings Telegrams of the Channel Islands

**Graham Booth** a Vermeil for Uniform Penny Post Handstruck Marks

**Brian Sole** a Vermeil for Guernsey Christmas Issue 19/11/85

**Jon Aitchison** a Large Silver for Letters, Documents and Mail from the  
Island of Jethou

**Brian Sole** a Silver for UK Philatelic Exhibitions 1890 – 1960

**On Wednesday 6th September 2017 Jon Aitchison FRPSL** will be presenting a display entitled *Unusual Aspects of the Channel Islands* to the Collectors Club of New York at 22 East 35th Street, New York, NY10016-3806 ([www.collectorsclub.org](http://www.collectorsclub.org)). This will include postal history, the smaller Islands, local issues, revenues, salvaged wreck mail, ballons montés into the Channel Islands from the Siege of Paris, aviation, railways, French Channel Islands and much more. There is a social hour from 5pm and the exhibit opens at 6pm. Anyone who would like to attend and is not a member of the Collectors Club is welcome to come as a guest of Jon, but please first advise him by email at [britishlocals@aol.com](mailto:britishlocals@aol.com) or telephone **01279 870488**.

## **Channel Islands Specialist Society Competitions - 11th February 2017** by Alan Moorcroft FRPSL.

The following competitions were judged by Graham Winters FRPSL and the respective standard is given for each entrant:

### **Sussex Cup for Postal History**

Ballons Montés and other mail to and from the Channel Islands – Jon

Aitchison FRPSL. Gold Winner

The Moveable Box Service between the Channel Islands and France – Ron

Brown FRPSL. Large Vermeil

Boîte Mobile Mail Service between the Channel Islands and France –

Richard Flemming. Vermeil

Parish of St Sampson's Guernsey Sub Post Offices – Nick Stuart. Silver

### **Society Cup for Stamps**

Jersey 1d Arms Stamps 1941-43 - Ron Brown FRPSL. Gold. Winner

Jersey Independent Postal Administration 1969-1975 – Richard Flemming.  
Silver Bronze

### **Tom Green Cup for Occupation Postal History**

The Surcharging of Mail during the German Occupation – Gerald Marriner  
FRPSL. Vermeil. Winner

German Occupation of the Channel Islands – Sark – Gavin Wood. Silver

### **Open Philately Competition Cup**

Channel Islands – Robert Porter. Bronze. Winner

### **Previous Winners Competition**

Jersey ½ d Arms Stamps – Ron Brown FRPSL. Gold. Winner

Herm Island 1962 Anti Malaria Issue – Jon Aitchison FRPSL. Large  
Vermeil

These two competitions were judged by the members present:

### **The Society Cup for Postcards**

Saumarez Park Bazaar – 1907 - Moira Edwards. Winner

Channel Islands' Novelty Postcards – Jon Aitchison FRPSL

### **Ephemera Competition Cup**

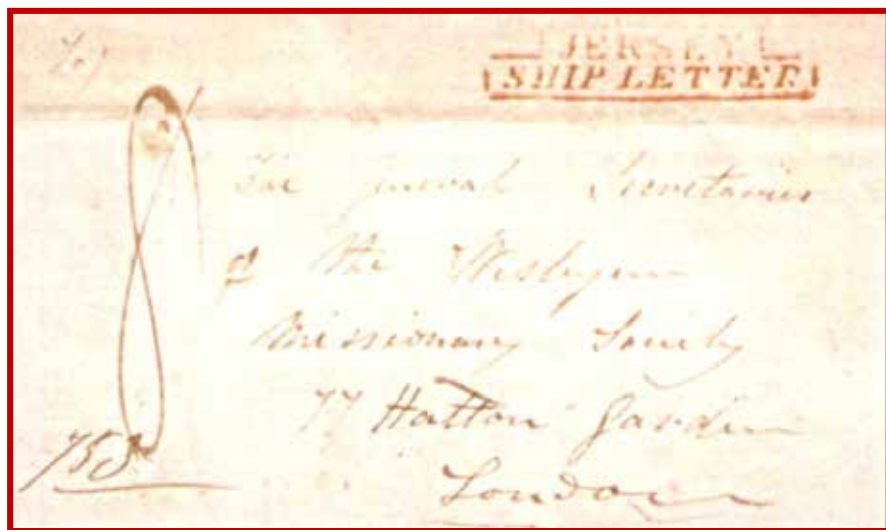
Greetings Telegrams used in the Channel Islands – Jon Aitchison FRPSL.  
Winner

## London Meeting Report Saturday, 11<sup>th</sup> February 2017.

by Richard Flemming

Seventeen members attended the Society's Annual Competition day, for which Alan Moorcroft has provided details. As well as the Competition entries, the morning saw a mini-room auction of some 60 lots as well as non-competitive displays from members. Jon Aitchison showed his "Channel Islands Taxation without Revenue Stamps" followed by Robert Shaw's display "Herm Flyers and Trade Labels".

Ron Brown FRPSL showed his recent auction purchase of the only known example of the step-type JERSEY/SHIP LETTER below.



Staying with the ship letter theme, Richard Flemming showed more examples of Channel Island Ship Letters. Nick Stuart entertained us with his Edmund Blampied covers and Gerald Marriner displayed some of his more unusual Red Cross Message Forms.



## Weekend Meeting Report, Cardiff 7<sup>th</sup> – 9<sup>th</sup> April 2017

by Richard Flemming

Forty-six members and guests attended this year's Weekend Meeting held at the Jurys Inn Hotel, Cardiff. The weekend began with a standing display by **Jon Aitchison** looking at the evolution of the ubiquitous telegram form. Following the evening's dinner we were invited to vote for the best "Three Sheets to Tell a Story" competition. Five members entered the competition and after we had all examined the displays, Ron Osborne was declared the winner with his "Friends, Family and World War 2 – a Tongue in Cheek Story"

Saturday morning began with a Bourse and the opportunity for members to view the 533 auction lots. Beginning at 11.15am with Messrs Marriner and Flemming as auctioneers with Gavin Wood as 'runner', some fevered bidding was brisk with several lots far exceeding their reserve. By 1.30pm the final lot was sold with an estimated £16,000 raised.

Following lunch, twenty-eight members and guests attended the Invited Member's display by **Gerald Marriner** titled "Red Cross Message Service". Later members and guests attended the annual dinner followed by Society President, Alan Moorcroft, presenting certificates to all those members who entered the Society's Annual Competition. Richard Flemming, Secretary, then thanked Gerald Marriner for arranging such an excellent weekend and also thanked Dave and Moira Edwards for their dedicated service as Chairman and Membership Secretary respectively with their retirement at the forthcoming Annual General Meeting.

Sunday morning traditionally consists of members' displays, and this year ten members provided displays as follows: **Olaf Beecken** showed "Into Alderney" comprising Feldpost items from Germany into Alderney, registered mail and also mail from Hungary, Spain and a 1943 item from Ukraine. **David Gurney** showed "Illustrated and Advertising Covers" including four Mulreadys, hand illustrated envelopes and the attractive Jersey and Guernsey 'Rose' with envelope. **Gerald Marriner's** study of Belgian Congo mail revealed an 1897 cover to Sark and also of interest a 7½d letter sent from the Channel Islands to Rhodesia during that country's declaration of UDI sent via Nigeria bearing "Return to Sender" as it was stopped at Lagos. **Jon Aitchison** provided an in-depth history of the Franco-Prussian War and showed some rare Balloon Monte mail sent to and from the Channel Islands during the 1869-70 Siege of Paris and also some World War 1 Austro-German civilian internee mail from the internee camp on Les Iles Chausey.

**Leopold Mayr** gave an excellent talk and display of Red Cross Form 61 explaining this was used during the early occupation of the Channel Islands July 1940 to January 1941. Messages were transcribed in Geneva, with Form 61 allowing only 10 words instead of the usual 25 words. Interestingly no British Red Cross cachets appear on Form 61 nor British censor marks so it appears that Forms

61 did not go to Britain with an estimated 6000 – 7000 Form 61s issued. **Brian Sole** described himself as a “thematic stamp collector” and supplied an excellent display of colour proofs from the 1969 Jersey Postal Independence ‘Views’ stamp issue. He also showed proofs of the Postage Due/To pay stamps, as well as original drawings for Jethou used for stamps.

**David Winnie**’s focus was on the Rouge Bouillon Sub-Post Office providing items dating from 1<sup>st</sup> February 1889 to 24<sup>th</sup> November 2001, including single ring datestamps, parcel post labels, German Occupation Feldpost mail (philatelic use), a Post Office Savings book, postal order and a REM envelope. **Gavin Wood** showed items of Occupation mail relating to Sark including a Guernsey cover from the States Committee for Control of Essential Commodities dated 17<sup>th</sup> February 1941 bearing a GVI 2d bisect and 1½d definitive machine cancelled addressed to Sark and a ‘local’ letter from Sark to Little Sark bearing a bisected GVI 2d Centenary.

**Ron Osborne** provided a 24-item display commencing with a 1902 Boer War cover from South Africa to Guernsey, a 1903 post card from France to Jersey with a boxed “Liable to letter rate/409”, two censored covers dated 1915 and 1917 respectively from Guernsey to Switzerland and Jersey to Holland. There was also a 1942 Feldpost letter from Russia to Guernsey and two Feldpost registered letters, one bearing Kenn. numbers 712 for Jersey and 937 for Guernsey. Ron’s final sheet consisted of two registered letters firstly, 29<sup>th</sup> April 1950 to the UK and secondly 4<sup>th</sup> September 1950 to South Africa from the First Tower Sub-Post Office in Jersey.

**Alan Moorcroft** provided 12 sheets all related to 1945 including a letter from the Channel Island Society, Mount Pleasant, London to Canada confirming the re-opening of the post with Jersey and Guernsey dated 4<sup>th</sup> May 1945, two FPO 138 mail items, the second being a rather long registered letter with registration label and a telegram form dated 14<sup>th</sup> May 1945, but not sent until 18<sup>th</sup> May 1945, probably due to the delay in getting the undersea cable reconnected to the mainland. Alan also showed an item of post-war POW mail bearing the 801 handstamp of Guernsey. The final display was provided by **Richard Flemming** with a single frame of mail to and from Sark, including a document dated 1609 and a letter dated 22<sup>nd</sup> June 1815 that describes some of the Battle of Waterloo and moving to 1859, an envelope bearing a rare SARK undated double arc.

## New modern 2003 Guernsey stamp error

by Ray B. Dixon

The illustration below of missing silver in the Guernsey 2003 Letters of Alphabet £5.00 value (SG 1008) showing the absence of the Queen's Head and GUERNSEY £5 in the left hand example is taken from a recent listing on Ebay by Rushstamps of Southampton.



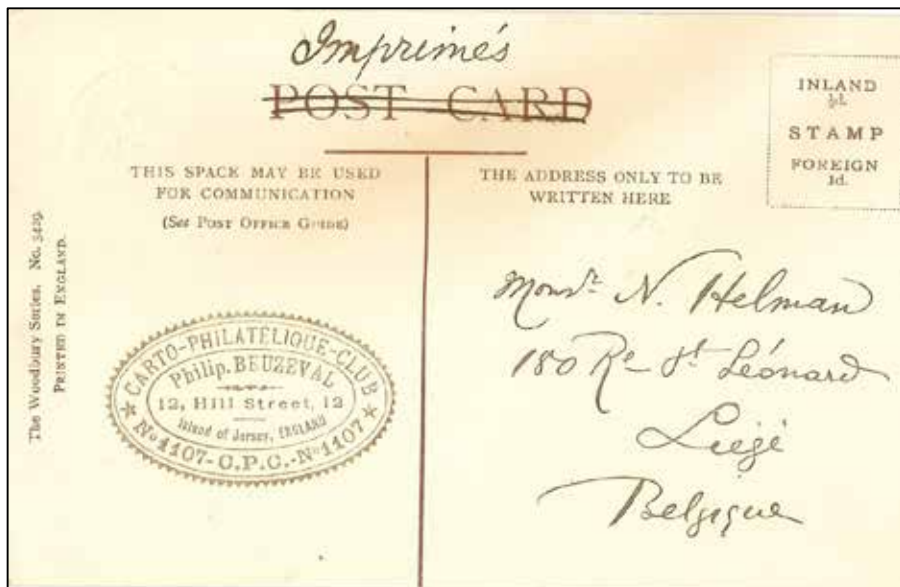
These were also included in the April postal auction catalogue of Provincial Philatelics with the description 'Guernsey 2003 £5 SG1008 missing silver x 2 (U/M and fine used on piece), Queen's Head, ""£5" and "Guernsey" all completely missing'.

I understand the stamps were issued in a sheetlet of four, (4x1) which was retained in use as a definitive stamp. The Ebay listing shows five were for sale. From these two sources it would appear there is more than one sheetlet with this error.

## A new Jersey cachet discovered.

by Henri Chartier

I recently found this interesting unrecorded cachet on a postcard of the



Rosery and Middle Lawn, Somerville Hotel, Jersey posted from Jersey on 25/9/07.

Can any member report a similar example?

## GUERNSEY MONTHLY MEETINGS

**CISS and RPSL members are welcome  
to attend monthly meetings in  
Guernsey, contact John Triggs on  
01481 725847 or [jtriggs@cwgsy.net](mailto:jtriggs@cwgsy.net) for  
further details of where and when.**

## Mulready envelope to London from St Aubin, Jersey dated 8<sup>th</sup> June 1840 by Guy Dandoy

I have recently purchased this Mulready stereo A142 envelope sent from Jersey to London which was posted at the St Aubin Receiving House on or about the 8<sup>th</sup> June 1840. It is cancelled at the Jersey Head Post Office with a reddish Jersey Maltese Cross handstamp, bears a reasonably good strike in black ink of the boxed No 1 handstamp on the lower face, the Jersey Head Post Office dated arc for 8 JU 1840 in black ink on the reverse together with London transit and arrival datestamps in red ink for 10<sup>th</sup> June 1840.



Reference to David Gurney FRPSL, who has maintained a database of the Islands' Maltese Crosses for some 30 years, reveals that this example was formerly unknown to him and is one of only 13 Mulreadys now recorded to have been used from Jersey! It is the first known example used from a Receiving Office (Sub-Post Office) in the Channel Islands. Only eight Mulreadys are recorded as used from Guernsey.

The reverse side of this Mulready letter is depicted on the next page.

Unfortunately the enclosed letter has not survived which could have provided more information of the writer and circumstances of the time.



## ANY UNWANTED SOCIETY JOURNALS?



Please do **not** throw your Journals or old Bulletins away. Send to the Membership Secretary, **Moir Edwards** at **86, Hall Lane, Sandon, Chelmsford. Essex. CM2 7RQ** for recycling to other members

# **JERSEY and GUERNSEY**

**A large stock of all issues from their first issues in October 1969 to date. Our stock includes Mint, Used, FDC and Presentation Packs also a large Stock of Pre-Independent issues of Occupation and Regionals.**

**Send for our latest Price List today (Free of Charge) and see for yourself.**

**We also stock C. I. Postal History & Postcards  
L.L. and Allix wants list welcome.**

**G. ROBBE LTD    PTS**  
**YORK CHAMBERS**  
**YORK STREET**  
**ST HELIER JERSEY JE2 3RQ**  
**TEL 01534 723084 FAX 01534 767680**  
**E.MAIL: [robbestamps@hotmail.com](mailto:robbestamps@hotmail.com)**

## St. Aubin – ½d black Postal Stationery envelope?

by David Winnie



The above postal stationery envelope has recently been acquired at auction. It has been sent from St. Aubin evidenced by the 24mm single circle datestamp of the 22<sup>nd</sup> July 1910 and is addressed to Paris, France having been routed via Granville. On the face of it, it is unusual as it shows the ½d embossed ED VII stamp making up the 2½d postage rate quite clearly in black, which is unrecorded. However, from investigations undertaken, it has been established that the embossed stamp was originally in yellow-green, but through oxidization over time, the colour has changed to black. My thanks go to Alan Huggins MBE RDP Hon. FRPSL for this explanation.





## Naval Harbour Surveillance Office 1942 Censor cachet

by Ron Brown FRPSL

During the Occupation period civilian mail could be sent between the Channel Islands and German occupied countries.

The mail was handled by the German Feldpost. The postage rate from the Islands was 25pf for a letter and 15pf for a postcard. The postage rate to the Islands was the external rate of the country of origin.



*A cover from Jersey to Amiens, France, postmarked 2 June 1942.*

On the next page the reverse side of this envelope is illustrated showing the censor cachet **Kriegsmarine Hafenuberwachungstelle** (Naval Harbour Surveillance Office).

This is the first time I have seen this cachet on civilian mail.

Can any member able to provide an explanation for the use of this cachet?



The cover is from a Miss Pluyinage whose address is given as the Sacre Coeur Orphanage.

It is not known whether Miss Pluyinage was an orphan or worker at the orphanage.

## **BUYING**

### **Channel Islands' Regionals and £sd Independence period**

Commercially used covers, parcel pieces, errors, proofs, printers' waste, artwork, Regionals used in the UK after 31st October 1969, anything unusual.

Also buying Channel Island collections, postal history, revenues, locals, telegrams, almost anything. Please let me make you a good offer.

**Jon Aitchison**

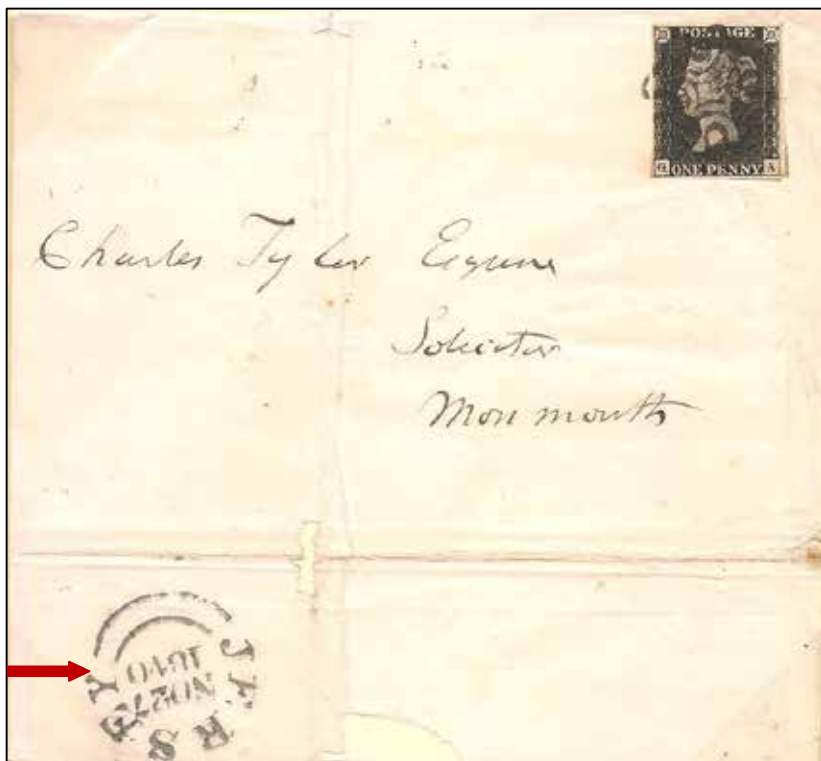
Old Tithe Hall, Start Hill, Bishop's Stortford CM22 7TF,  
United Kingdom.

Telephone: UK 01279 870488. Email: [britishlocals@aol.com](mailto:britishlocals@aol.com)

## **An early example of the Jersey dated arc with inverted '4'.**

by David Gurney FRPSL

**Lot 2** in the **Society April Postal Auction** included this 1840 wrapper from Jersey to Monmouth with a good three margin 1d black (plate 7) cancelled with a clear black Jersey Maltese Cross which is now recorded in my database. The unusual feature of this dated Jersey arc on the reverse is the inverted '4' in 1840 which did occur from time to time as also did the occasional omission of some figures of the date. Nonetheless a very collectable entire letter.



Entered in the Society Postal Auction with a reserve of £500.00 some competitive bidding realised the sum of £775.00, a very high price for this entire letter.

An amazing result in our April 2017 Auction at the Cardiff meeting!



# Channel Island Postal BidSales

Glategny Chambers, 1st Floor, Bosq Lane, St. Peter Port, Guernsey, GY1 2LP.

Tel: 01481 727353/Fax 01481 725981 Email: [dtomlin@cipostalbids.co.uk](mailto:dtomlin@cipostalbids.co.uk)

Postal Auction catalogues are produced 5 times a year and include a wide variety of Postal History and stamp issues. Including specialised listings.



We offer a wide range of Channel Islands and Isle of Man stamps in our Retail Catalogue.

Please visit our Website:

<https://www.cipostalbids.com> for all these and much more including Special Offers of rare and scarce items. Catalogue available by post on request.



## ROLE OF MEMBERSHIP SECRETARY

With effect from the July 2017 AGM the position of Membership Secretary will become vacant and applications are sought from members of the Society to take on this interesting job. It is a requirement of the position that you are computer literate with good website skills to keep in contact with the membership of the Society. **Attendance at London based Committee meetings is NOT required.** For further details contact Secretary: Richard Flemming (tel: 01455 613826) at [rflemming@talktalk.net](mailto:rflemming@talktalk.net) or Membership Secretary: Moira Edwards (tel: 01245 472813) at [membership@ciss1950.org.uk](mailto:membership@ciss1950.org.uk)

by David Winnie

I have recently acquired this Permit issued under the Milk Order, 1940 to supply Milk by Retail and this is illustrated above. The permit has been addressed to the Sub-Postmaster, Mr H.T. Duquemin at Cobo Post Office, who was permitted to sell milk and is dated the 9<sup>th</sup> October 1942.

This provides authorisation for changes to be made in the quantities and/or grade of milk that could be supplied. An unusual fit for my Sub-Office collection.

## A new Guernsey slogan postmark

by Steve Wells

I attach an image of a new Guernsey slogan mark on a moonpig.com envelope sent on the 14<sup>th</sup> February 2017 containing a birthday card.

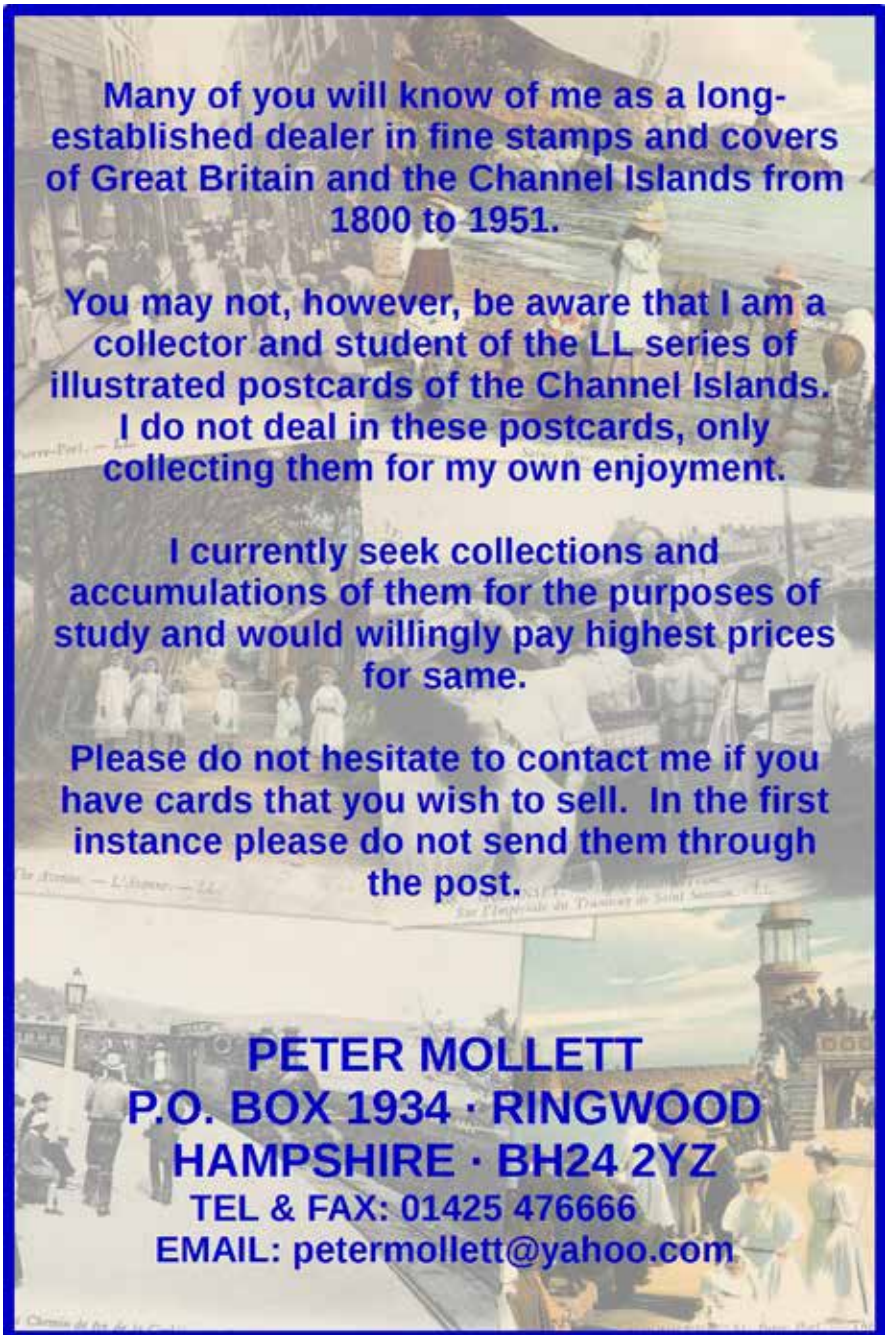
The British Postmark Society Journal January 2017 (Vol. 60 No.1) included articles on modern Jersey and Guernsey slogan marks (*Jersey News* by Malcolm Newton pp.60/2-5) and *Guernsey Special Event Postmarks 2016* compiled by Frank Harwood p.60/15).



Ed..... I noticed that the same slogan was used on a cover I received later in February per scan below:





The background of the entire page is a collage of various vintage postcards from the Channel Islands. The postcards depict different scenes: a busy street with many people, a lighthouse on a rocky shore, a group of people in period clothing, and a view of a town. The text is overlaid on this collage.

Many of you will know of me as a long-established dealer in fine stamps and covers of Great Britain and the Channel Islands from 1800 to 1951.

You may not, however, be aware that I am a collector and student of the LL series of illustrated postcards of the Channel Islands.

I do not deal in these postcards, only collecting them for my own enjoyment.

I currently seek collections and accumulations of them for the purposes of study and would willingly pay highest prices for same.

Please do not hesitate to contact me if you have cards that you wish to sell. In the first instance please do not send them through the post.

**PETER MOLLETT**  
**P.O. BOX 1934 · RINGWOOD**  
**HAMPSHIRE · BH24 2YZ**  
**TEL & FAX: 01425 476666**  
**EMAIL: [petermollett@yahoo.com](mailto:petermollett@yahoo.com)**

## More 36mm skeleton datestamps used at St. Peters, Jersey.

by Steve Power

It has long been thought that the large skeleton datestamp for St Peters consisted of five examples (CISS Journal 11/1 of 1992 and re-affirmed in David Gurney's *The Postal History of the Sub-Post Offices* 2001)

These are known recorded between the 13<sup>th</sup> June and 21<sup>st</sup> July 1910 and, whilst the dates still appear correct, there are now seven known examples as follows: -

13<sup>th</sup> June – on a local postcard addressed to a Miss Buesnel, Gorey

2<sup>nd</sup> July – again a local postcard to St Martin

18<sup>th</sup> July – on a postcard to Paris (owned by Tony Peters)

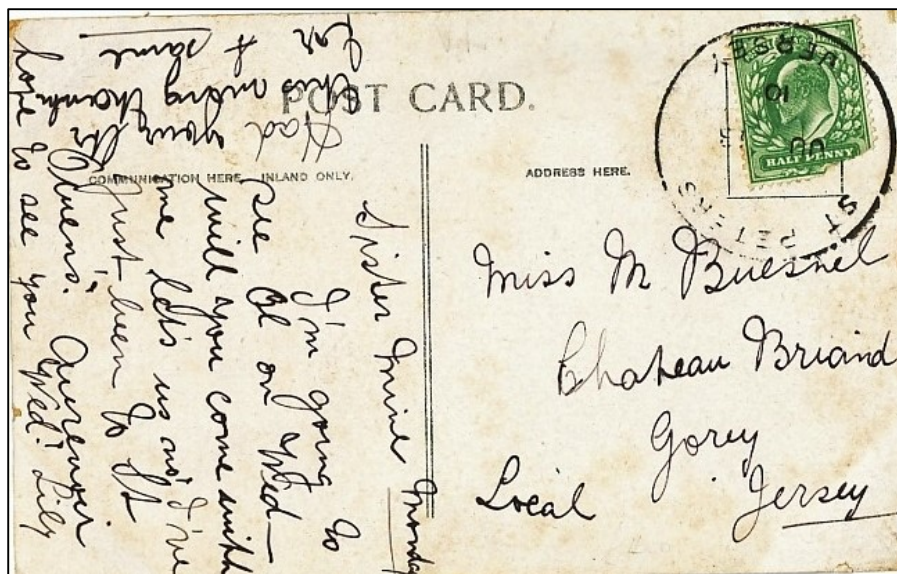
20<sup>th</sup> July – addressed to London and illustrated on the Les Iles Angle Normandes website

21<sup>st</sup> July – three examples, all on postcards addressed to Paris (all three having different addresses), two stamped and franked on the front face, with the third on the reverse.

If members have any further examples of any 36mm skeleton datestamps I would appreciate a copy. Illustrations shown below and on the following pages are reduced in size -









## DISPOSAL OF YOUR CHANNEL ISLANDS' COLLECTIONS

If you or your relatives wish your collection to be sold due to change of interest, incapacity, or death the Society could assist you by arranging for its disposal within the C.I.S.S. through the Society's auctions and/or circulating Packets.

Benefits can be:

1. Best realisation of value to owner or dependents.
2. Opportunity for members to obtain items reasonably.
3. Society income enhanced with commission charged at 10% on sale by auction or packet plus 2% insurance.

Several collections have been successfully sold in this way in recent years to the benefit of the owners. In the first instance please contact the Secretary at [rflemming@talktalk.net](mailto:rflemming@talktalk.net) or ring 01455 613826

## PAST JOURNALS and BULLETINS.

The Society has a stock of past issues of the **Bulletins** and the Journal '**LES ILES NORMANDES**'. The Bulletins are available at £0.50 each, and the Journals at £1.00 each, postage and packing is extra. The indices to both the Bulletins and Journals can be found on the website; [www.ciss1950.org.uk](http://www.ciss1950.org.uk)

To enquire about past issues please contact Moira Edwards at 86, Hall Lane, Sandon, Chelmsford, CM2 7RQ, or email:

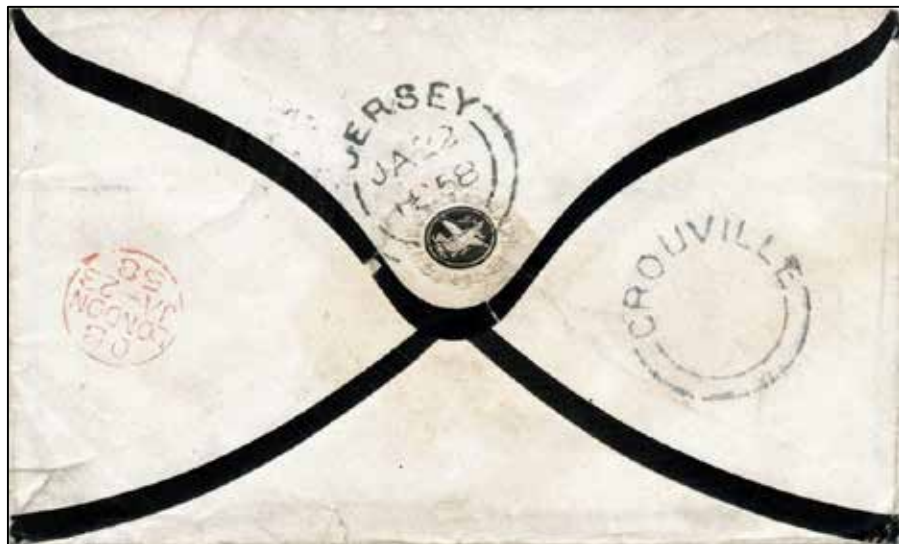
[membership@ciss1950.org.uk](mailto:membership@ciss1950.org.uk)

## Undated double arc for Grouville, Jersey

by Guy Dandoy

During March I bought in an auction house in Germany part of a collection of Jersey Sub-Post Offices.

Amongst this lot was the undated double arc of Grouville, which is described on page 132 of David Gurney's book *The Postal History of the Jersey Sub-Post Offices*.



A correctly spelt undated double arc handstamp is known struck as a receiving stamp on a cover addressed to London in 1858, but this particular handstamp is not recorded in the Proof Strike Books of the GPO in London.

This is a particularly good and complete strike of the GROUVILLE undated double arc in black which curiously appears to have a **C** rather than a **G** in the name.

As far as I know I believe this to be the only example known and I would be very grateful to learn from members whether another exists.

## **Unusual Registered Letter from St Aubyns to Paris in 1899**

Tony Peters writes in reference to the article by David Winnie in the last Journal Vol. 36 No.1 page 9 that the French postmark “**Brest A (Paris)**” indicates that the letter was delivered via the train line from Brest to Paris. To be specific, this cancellation was used by the Travelling Post Office on the train service between Brest and Paris; the postmark with an inner circle, as shown on the cover, indicates that it travelled on the day train and an inner octagonal would show that it travelled via the night train. It is not documented where the letter was handed over to the Travelling Post Office, and this is normal, but the train line did go via St. Malo.

## **ORGANISATION TODT – TRAVEL VOUCHER**

by Ron Brown FRPSL

Illustrated on the next page is a rare example of a travel voucher allocated by the Organisation Todt to Leopold Schictsc for travel from St Malo to Jersey and issued by the German Commandant at St. Malo on the 28<sup>th</sup> September 1942. The voucher is tri-lingual for use in France, Belgium and Holland with instructions that it should be left at the station (or port) of departure. It is probable in this case that the voucher was not used. It is not known if the recipient was a member of the OT or an employee.

Organisation Todt was founded by Dr Fritz Todt, an engineer and senior Nazi figure, who had direct access to Adolf Hitler and whose organisation was responsible for major construction works including the pre-war autobahns.

Dr Todt made only one visit to the Channel Islands in November 1941. He was killed in 1942 when the aeroplane in which he was travelling exploded. This may have been the result of sabotage. Albert Speer was also scheduled to be on this flight, but did not fly. On the death of Dr Todt the Organisation Todt was then taken over by Albert Speer.

Organisation Todt was a quasi-military group of construction companies. Despite being civilians the German OT personnel wore uniforms (mostly captured Czech khaki) and filled the posts of foremen, camp administrators and other officials enjoying paramilitary status. The workforce comprised well paid craftsmen, ‘volunteers’, conscripted, forced and slave labourers.



# MITTELEUROPAÏSCHES REISEBÜRO

PLACE DE L'OPERA - PARIS

2<sup>e</sup>  
3<sup>e</sup> classe

Die nicht zutreffende  
Klasse streichen  
Bijler l'indication de  
la classe non utilisée  
De niet benoemde  
klasse doorhalen

Gegen diesen Gutschein muss eine Bahnhofschahe  
mit Fahrkarte ohne Beschränkung gelöst werden

Contre ce billet de transport à échanger à la gare de départ contre un  
billet de transport à régler sur une autre voie au même prix

Daar het moet aan het station van vertrek worden ingewisseld  
tegen een andere plaatsbewijs

N° 269399

## O. T.

Verkehr - Traffic - Verkeer

### FRANCE — BELGIQUE — HOLLANDE

Die Organisation TODT ertucht die  
L'Organisation TODT demande à  
De Organisatie TODT verzocht de

S.N.C.F. français. Eisenbahnen  
S.N.C.B. belgische Eisenbahnen  
Ned.Sp. niederländ. Eisenbahnen

gegen diesen Gutschein zu liefern  
de délivrer contre ce bon  
tegen intrekking van deze bon af te geven

an Herrn  
à Monsieur  
an Mr.

*Schiller Leopold*

einen Farschein für  
un billet pour  
een plaatsbewijs voor

*1*

Person (en)  
personne (s)  
perso (s) n (en)

von  
de  
van

*ST 1746*

(France) nach  
(Belgique) à  
(Hollande) naar

*Tersch J. J. 1*

(France)  
(Belgique)  
(Hollande)

Nicht zutreffende  
Länder streichen  
Bijler les pays  
non utilisés  
Niet te aanmerking  
komende landen  
doorhalen

via  
Indication antérie de l'itinéraire à suivre  
et des points d'arrêt  
Naukeurige aanduiding van den te volgen  
reizeg en de grensovergangen

Railweg & Grenzübergangs  
gebruik aangeven

Unterchrift des Reisenden  
Signature du voyageur  
Handtekening van den reiziger

ORGANISATION TODT

In *ST 1746* den *28 9 46*  
à *10 10 46* en *10 10 46*  
te *10 10 46*  
Dienststelle *Koninkrijk 51746*

En du billet délivré  
Nr. van het afgegeven plaatsbewijs  
Tijds en date de la gare de départ  
Dato en tijdstip van het station van vertrek



Unterchrift  
Signature  
Handtekening  
*Schiller Leopold*



### OBSERVATIONS — OPMERKINGEN

A retirer par la gare de départ et à adresser en fin de mois au Contrôle des Recettes Voyageurs  
In te trekken door het station van vertrek en over te leggen aan de Administratieve Afdeling

# LISBON SUMMARY FORM from IRELAND

by Gerald Marriner FRPSL

3.



**Red Cross Message Bureau**

Summary of Civilian Message in suspense at Lisbon, Portugal.  
Destined for the Channel Islands.

---

FROM      Lady Shaw.  
              Dublin.

DATE OF MESSAGE      3.3.44.

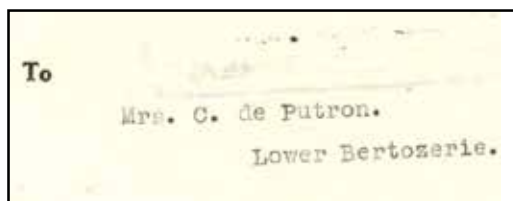
MESSAGE

Rejoice Owen better! Messages  
tedious but so welcome. All well.

RECEIVED 1944 MAR 10

I have recently acquired this Lisbon Summary Red Cross message form illustrated above which was sent from Lady Shaw in Dublin to her daughter, Mrs Annie de Putron, in Guernsey.

This was originally sent on 3 March 1944 and appears to be very unusual because of its origin – not from Great Britain, but from Ireland. I know of only one other example which is illustrated in the Mayr & Wieneke ‘Kanalinseln’ catalogue on page 180. This message, a part of the same correspondence, was originally dated 4 May 1944.



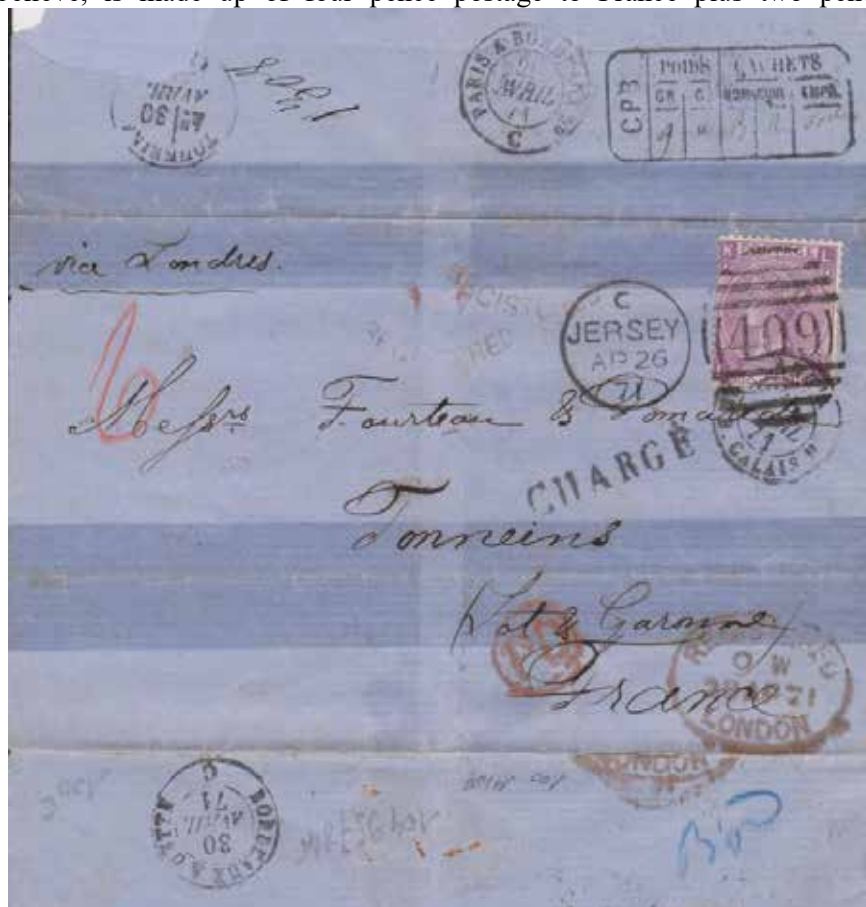
The Guernsey destination address is shown on the reverse side of the form.

Have members any other Lisbon forms from Ireland or are these the only two recorded?



## French 'CHARGE' mark applied to mail from the Channel Islands by Bob MacDonald.

I recently acquired this illustrated registered cover sent from Jersey to Lot and Garonne in south-west France dated 26 April 1871. The cover is reduced in size to fit and has been franked with a sixpenny stamp (which I believe, is made up of four pence postage to France plus two pence



Registration fee). Two feint incomplete Jersey Registration marks (SG JC94) and a PD (Paid to Destination) mark in red on the front. On arrival in London again two Registration marks have been applied. At some point on arriving in France the 'CHARGE' mark has been added. If this item has been paid to destination and registration is confirmed in Jersey and London

why is there an extra charge made in France? How much would this charge be? There is, also on the front, a red '6' in manuscript which may apply to the total postage or the French charge. I would appreciate any clarification by members on the question I have posed or any other relevant comments. Acknowledgements are given to David Gurney and Gerald Marriner in the preparation of this query.

## **CISS APRIL 2017 AUCTION REPORT**

This was another successful auction with a wide range of good material offered by 16 vendors covering Postal History including a good range of Island Sub-Post office datestamps, World War I, the Occupation, Liberation, Herm and Jethou, Revenues, an interesting range of Island Ephemera plus a great selection of postcards. Sales to date are just over £16,200. Prices achieved ranged from £3 to £775; many items selling at or close to their reserves so there was something for everyone's pocket.

Two Jersey POW Camp items sold for £165 each and all of the other WWI sold well above their reserves. As usual, a wide variety of Occupation Arms stamps were offered including many of the Imperforate items, the Jersey Imprint blocks and commercially used covers all sold well.

Most of the Feldpost items were sold including a cover from Unit FP Nr 33476 with Reg label Feldpost 937a which went for £140. Three of the rare Red Cross message forms sold well above estimate; a message from Eire to Guernsey with a reply (Gurney type F14b) £375; a form from India with reply went for £155 and a form from London with the rare 'VON DER BAILIFF' cachet sold for £325.

There was a rare Jersey Views ½ half size essay in two colours which sold for £550 and the other three proofs sold well above estimate. The ½ Jersey Views proof which had been signed by H Cortot went for £250.

This auction had another large range of Allix postcards which attracted some vigorous bidding between the room and postal bidders. All sold well above estimate which suggests these cards are rarer than was supposed. Several cards sold for above £100 each, including used ones. The mint and coloured ones fetched as follows: No. 148 of The Wolf Caves £130; 152 of SS Alberta £140; 166 Greve de Lecq Caves £130; 171 People's Park £250; 175 Havre de Pas Bathing Pools £170. Two mint cards of Samares Manor (No. 185 & 186) went for £300 each. Two of the postally used cards were in high demand - 173 Waterworks Valley fetched £170 and 179 Le Hocq

went for £140. Some of the Louis Levy cards commanded high prices. Two mint LL248 of the Jersey Government House sold for £85 and £150 respectively and a Les Vauxbelets mint card (No number) of Boys at Play fetched £150.

The past few auctions have shown that good material is in high demand. The success of future auctions is dependent on members providing items. Our next auction will be in October so, if you have any material for sale, **please send it to Gerald Marriner, 3 Barfoot Close, Fleckney, Leicester. LE8 8TD** as soon as possible and before the end of August if it is to be included in the October sale.

## Post and Go Update

by Ray B Dixon

For those members who collect or are interested in the new Post and Go 'stamps' from Guernsey and Jersey, there is another new issue available. Announced as a world first, the 'post and go' stamps from both Channel Island postal administrations were dispensed from a single kiosk at the recent **Melbourne International Stamp Expo**, held at the Caulfield Racecourse in Melbourne Australia between the 30<sup>th</sup> of March and the 2<sup>nd</sup> of April 2017.



The Kiosk was supplied by Cartor International Security Printers and printed on each stamp is the machine (Kiosk) identifier 'CSP1'. Although GB 'post and go' stamps have been dispensed from Jersey and Guernsey machines at various venues in the past, this is the first time two different



postal administrations 'post and go' stamps have been issued from the same kiosk at an international stamp exhibition. The stamps with the Melbourne overprint are also available from both Philatelic Bureaux; these are printed on the respective back room machines '**B002**'.

## **FORTHCOMING NEW STAMP ISSUES – 2017.**

### **GUERNSEY POST**

#### **19th July 2017 Guernsey Folklore**

Set of 6 stamps	£4.06
First Day Cover	£5.26
Presentation Pack	£4.96
Miniature Sheet	£3.00
First Day Cover	£4.20
Presentation Pack	£3.90
Sheets of 10	£40.60

### **1st September 2017 Guernsey Coasts (NVI's)**

Set of 10 stamps (5 GY/5UK)	£5.15
First Day Cover	£6.35
Presentation Pack	£6.05
Booklets of 10 (GY)	£4.40
Booklets of 10 (UK)	£5.90
Booklets of 50 (GY)	£22.00
Booklets of 50 (UK)	£29.50

### **1st September 2017 25th Anniversary of the Princess of Wales Royal Regiment** **(Subject to Royal Approval)**

Set of 6 stamps	£4.06
First Day Cover	£5.26
Presentation Pack	£4.96
Miniature Sheet ( <b>TBC</b> )	£3.00
First Day Cover M/S ( <b>TBC</b> )	£4.20
M/S Presentation Pack ( <b>TBC</b> )	£3.90
Sheets of 10	£40.60

### **ALDERNEY**

#### **19th July 2017 Coastal Eclipses**

Set of 6 stamps	£4.06
First Day Cover	£5.26
Presentation Pack	£4.96
Souvenir Sheet	£4.06
First Day Cover	£5.26
Presentation Pack insert	£4.26
Sheets of 10	£40.60

### **JERSEY POST**

#### **12th July 2017 Kaleidoscopes – 200 years**

Set of 6 stamps	£4.61
First Day Cover	£5.76
Presentation Pack	£5.76
Souvenir Sheetlet	£4.61
First Day Cover	£5.76
Presentation Pack	£5.76

#### **4th August 2017 The Great War – 100 Year, Part Four: War in the Air**

Set of 6 stamps	£4.61
First Day Cover	£5.76
Presentation Pack	£5.76
Miniature Sheet	£2.00
First Day Cover	£3.15
Presentation Pack	£3.15
Souvenir Sheetlet	£4.61
First Day Cover	£5.76
Presentation Pack	£5.76

#### **1st September 2017 Links with China - Butterflies**

Set of 6 stamps	£2.94
First Day Cover	£4.09
Presentation Pack	£4.09
Souvenir Miniature Sheet	£0.98
First Day Cover	£2.13
Presentation Pack	£2.13
Souvenir Sheetlet	£2.94
First Day Cover	£4.09
Presentation Pack	£4.09

Due to the loss of LVCR, Jersey Post now collects the appropriate rate of VAT on the various products at the point of sale and pre-pays HMRC on all orders entering the UK. Post & packing charges CI - £1.85, UK - £1.94 (incl. VAT), Europe - £ 2.00 and the Rest of the World - £3.00. Note: This is the basic charge only.

Jersey Post charges 5% GST to Jersey customers on CTO stamps (and complete CTO sheets) only.

## **C.I.S.S. PUBLICATIONS**

**Our current stock of merchandise at  
reasonable prices.  
However postage is extra and will be invoiced.**

***Write to:*** C.I.S.S. Book Sales at 64, Falconers Green, Burbage.  
Hinckley. Leics. LE10 2SX or Email – [rflemming@talktalk.net](mailto:rflemming@talktalk.net)

- |   |        |
|---|--------|
| 1. The Channel Islands Sub-Post Offices and their Postmarks (292pp)   | £6.00  |
| 2. The Post Office in the Smaller Channel Islands (154pp)   | £12.00 |
| 3. The Postal History of the Guernsey Sub-Post Offices (265pp)  | £10.00 |
| 4. Red Cross Postal Message Scheme with the Channel Islands<br>during the Occupation 1940-45 (389pp)  | £8.00  |
| 5. Islanders Deported Part 11 (246pp)   | £4.00  |
| 6. The Postal History of the Jersey Sub-Post Offices (376pp)<br><u>(This book is reduced from £27 to £15 as staples are slightly rusting)</u> | £15.00 |
| 7. Registered Mail of the Guernsey Sub-Offices 1968-1990 Vol 2  | £3.00  |
| 8. Registered Mail of the Guernsey Sub-Offices 1968-1990 Vol 3  | £3.00  |
| 9. Channel Islands Revenues (Fifth Edition) – 1997  | £6.00  |
| 10. Jersey & Guernsey Slogan Postmarks of the 20 <sup>th</sup> Century (85pp)   | £7.50  |

**Also available:-**

**Binders** for '*Les Iles Normandes*' holding 12 issues @ £4.50 each or  
three for £12.50 plus postage.

**Society Ties:** In blue or maroon with CISS motif @ **£8.00** each plus postage.

Payment may be made by Visa/Access/Mastercard.or Paypal.

A service charge of 5% is made in accordance with the  
Credit Card (Prices Discrimination) Order.

Please quote your card number, expiry date and card settlement address.

**Please do not send payment until you receive an invoice  
for the cost of your order plus the postage and packing.**

# Channel Islands

## at Auction

Grosvenor holds regular specialised public auctions of Great Britain stamps and postal history in central London, heart of the international philatelic market, achieving consistently high results. Interesting Channel Islands material features regularly.



Each auction is available to view, with additional illustrations, on our website, **[www.grosvenorauctions.com](http://www.grosvenorauctions.com)**, and our exceptional printed catalogues are generously distributed, complimentary copies being available on request.

We work closely with collectors to ensure that presentation and prices meet vendors' highest expectations. Commission charges are generous, fully inclusive, and negotiable for valuable consignments. Contact **Andrew Williams** or **Glyn Page** today at the address below for further information on how Grosvenor can maximise the sale potential of your collection.

## GROSVENOR

399-401 Strand 2nd & 3rd Floors London WC2R 0LT

T: 020 7379 8789 F: 020 7379 9737 E: [info@grosvenor-auctions.co.uk](mailto:info@grosvenor-auctions.co.uk)

[www.grosvenorauctions.com](http://www.grosvenorauctions.com)