



**CHANNEL ISLANDS  
SPECIALISTS' SOCIETY**

December 2017

Volume 36 No.4

# THE CHANNEL ISLANDS SPECIALISTS' SOCIETY

*Founded in 1950*

*for the study of the stamps and postal history of the Channel Islands*

## OFFICERS

**President:** Gerald Marriner FRPSL

E-mail: gerald.marriner@gmail.com

**Chairman:** David Winnie

E-mail: davidwinnie1@aol.com

**Secretary:** Richard Flemming

64, Falconers Green, Burbage. Hinckley. LE10 2SX. E-mail: rflemming@talktalk.net

**Treasurer:** Robert Porter

3, Nursery Road, Hoddesdon. Herts. EN11 9LA. Email: robertwporter@btinternet.com

**Journal Editor:** David Gurney FRPSL

4, Kingscote, Tree Lane. Plaxtol Kent TN15 0QA. Email: nangurney1@aol.com

**Packet Secretary:** John Triggs FRPSL

“SUNNYSIDE”, La Gibauderie, St. Peter Port, Guernsey GY1 1XF. E-mail: jtriggs@cwgsy.net

**Auction Secretary:** Nick Stuart

3, Dudley Road, Walton on Thames, KT12 2JT E-mail:- nick\_stuart@talk21.com

**Membership & Subscription Secretary:** Mark Bailey FRPSL

36, Jerry Moor Hill, Finchampstead, Wokingham. RG40 4UG E-mail: membership@ciss1950.org.uk

**Advertising & Press Officer:** Stephen Wells

The Hollies. 42, High Street, Tarring. Worthing. West Sussex. BN14 7NR

E-mail: press@ciss1950.org.uk

**Competitions Secretary:** Alan N. Moorcroft FRPSL

2, Ramparts Court, Bakers Lane, Braiswick. Colchester. CO4 5BJ

E-mail: [anmoorcroft@btinternet.com](mailto:anmoorcroft@btinternet.com)

**CISS Internet address:- [www.ciss1950.org.uk](http://www.ciss1950.org.uk)**

Membership is open to all interested in Channel Islands stamps  
and postal history, postcards and ephemera.

Membership application forms can be obtained from the Membership Secretary.

Exchange Packets are circulated regularly. A Postal Auction is held twice yearly.

A 36 page colour Journal is published quarterly.

Meetings are held three or four times a year in London and the Provinces.

## ADVERTISEMENT RATES IN LES ILES NORMANDES

Outside back cover: £40.00. Full page: £30.00. Half page: £18.00

©The Channel Islands Specialists' Society

## SUBSCRIPTIONS and STANDING ORDERS

Will members please note the following points:-

1. Subscriptions, which are due on **1<sup>st</sup> January**, should be sent direct to **Mark Bailey** and **NOT** to any other officer of the Society. A Subscription Invoice will be sent in the December issue of the Journal.
2. All members may now pay by credit card or PayPal. The amount will be the appropriate subscription rate. Send your card details including number and expiry date to **Mark Bailey**, send your PayPal payment to **treasurer@ciss1950.org.uk**.
3. Overseas members may still pay by STERLING cheque drawn on a U.K. Bank. Non-sterling cheques and non-sterling currency notes will no longer be accepted. Money Orders in sterling currency are acceptable.
4. Members who have not paid by **14<sup>th</sup> February** are assumed to have resigned.
5. Standing Order forms should be **sent by members to their own bank** and not to the Subscription Secretary.

**The Subscription rates for the year 2018 are:-**

COUNTRIES	CLASS OF POSTAGE	ANNUAL SUBSCRIPTION RATES in Pounds Sterling
Great Britain	2 <sup>nd</sup> Class Letterpost	Ordinary Members: <b>£20.00</b> , or choosing an electronic copy of quarterly Journal in place of a posted hard copy: <b>£15.00</b> Juniors, Senior Citizens and Registered Disabled: <b>£10.00</b> , or choosing an electronic copy of the Journal: <b>£7.50</b> Life Members: <b>£10.00</b> , or choosing an electronic copy of the Journal: <b>£6.00</b>
Europe	Airmail Printed Paper/ Small Packet Rate	Ordinary Members: <b>£25.00</b> , or choosing an electronic copy of the Journal: <b>£15.00</b> Life Members: <b>£10.00</b> , or choosing an electronic copy of the Journal: <b>£6.00</b>
Rest of the World	Airmail Printed Paper/ Small Packet Rate	Ordinary Members: <b>£30.00</b> , or choosing an electronic copy of the Journal: <b>£15.00</b> Life Members: <b>£10.00</b> , or choosing an electronic copy of the Journal: <b>£6.00</b>

## CONTENTS

Secretary's Clipboard.....	3
Future Members' Meetings moved to the Union Jack Club .....	4
Competition Day Saturday 10th February 2018 .....	6
News of Members .....	6
Member's Meeting, London 16th September 2017 .....	7
Jersey 1d Views Wrongly Dated Block .....	10
1940/41 The 'Difficult Period' for mails between the Occupied Channel Islands and France .....	12
The 'Difficult period' .....	14
Scarce Underpaid cover from America.....	19
'waists getting waspish' – A Review.....	20
St. Sampsons, Guernsey 1916 registered letter to Postal 99 on the Western Front – further information .....	22
Timmer Ltd 25 July 1940 cover to Dr Maas in Guernsey .....	23
A matching Jersey Red Cross message reply with an S.S. Vega abbreviated summary message .....	26
Rare 1858 cover from Braunschweig in the Duchy of Brunswick to St Peters, Jersey .....	30
On British Soil – Victims of Nazi Persecution in the Channel Islands.....	31
Forthcoming New Stamp Issues in 2018 .....	34

Whilst every care is taken in the production of this Journal statements expressed in articles in *LES ILES NORMANDES* are the sole responsibility of the author(s) and are not necessarily endorsed by the Editor or by the Channel Islands Specialists' Society neither of whom can be held responsible for the accuracy of the information therein or any consequence arising there from

## EDITORIAL

This edition has some important covers and articles arising from the Occupation period and inter-alia a Review of Leo Mayr's new CISS Monograph – '**waists getting waspish**', a study of the the functionality and procedures of the Guernsey Authorities and the Guernsey Red Cross Bureau 1940-45.

Also full details and a map helping you to find our new London meeting home from the 10<sup>th</sup> February 2018 Competition meeting.

## SECRETARY'S CLIPBOARD

by Richard Flemming

As Christmas is fast approaching we are already thinking ahead to our move to the Union Jack Club, Sandell Street (please see the notice on the next page) for our February meeting. Sadly, only thirteen members made the September Member's Meeting at No. 41, probably due to the bomb explosion on a London Underground train at Parsons Green station which, sadly, injured several people. For those members who made it to the meeting, an excellent day was had by all (please see meeting notes on page 7 of this edition).

Gerald Marriner has been busy putting the finishing touches to the Member's Weekend in Jersey, please see enclosed booking form. Please book early to ensure your place. The timetable for the weekend will be published in the March 2018 edition of *Les Iles Normandes*.

As the nights are drawing in it is time to think ahead to our Competition Day, Saturday 10<sup>th</sup> February 2018, so please get your entries prepared. For details of the different classes to enter please see page 6 and the CISS website. Also, talking about competitions, why not enter for Spring Stampex, please see *Les Iles Normandes*, September 2017, page 20 for further details.

Forthcoming meetings:

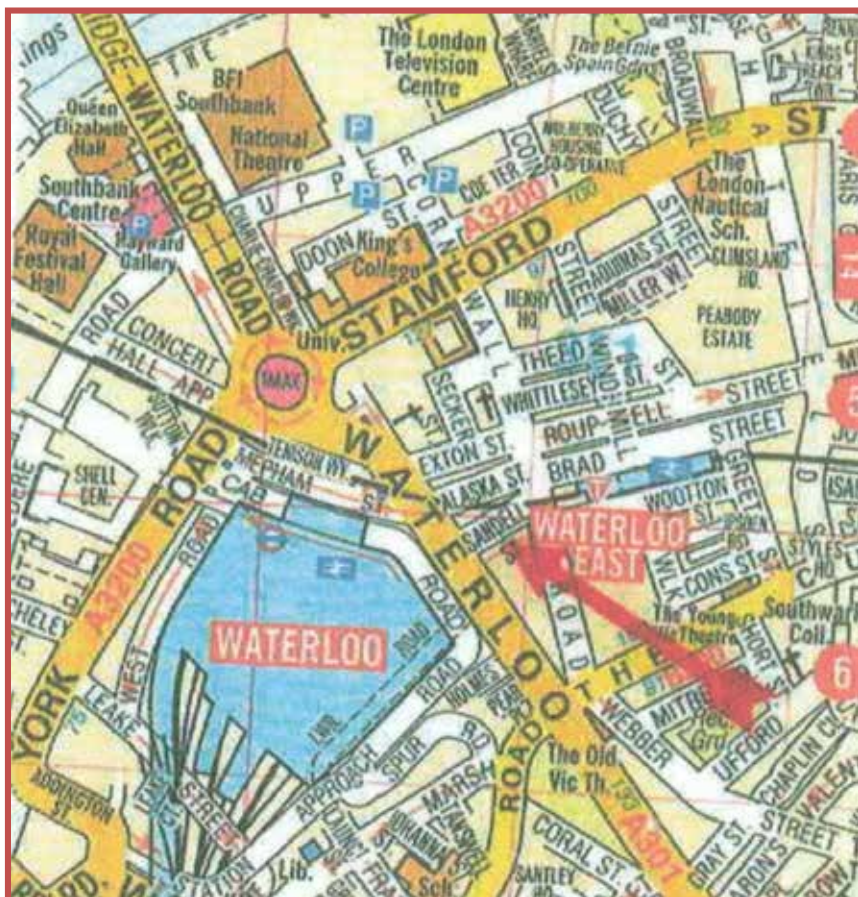
10th February 2018	Member's Annual Competition
20th – 22nd April 2018	Members' Weekend in Jersey
14th July 2018	AGM and Member's Meeting
22nd September 2018	Member's Meeting. Theme: Channel Islands Occupation.

**PLEASE NOTE THAT FROM 2018 ALL MEETINGS WILL BE HELD AT THE UNION JACK CLUB, SANDELL STREET, WATERLOO, LONDON, SE1 8UJ.**

**Full details are shown on the next page.**

**Future Members' Meetings moved to the Union Jack Club,  
Sandell Street, London SE1 8UJ. Telephone: 020 7902 606.  
Website: [ujclub.co.uk](http://ujclub.co.uk)**

Due to the Royal Philatelic Society London selling its No. 41 Devonshire Place, London property and seeking new premises elsewhere in London, and the increasing costs of hiring No. 41, the Committee took the decision to seek new premises for Society meetings. The Union Jack Club (UJC) is a tried and tested venue by other philatelic societies so the decision was made to move our meetings there at a significant saving in cost to the Society.



If arriving by Waterloo Underground Station please head towards Waterloo Mainline Station concourse and head towards Platform 4 (Platforms will be on your right) by the Accessorise shop. Opposite Platform 4 you will need to access the stairs or escalator which will then take you to the lower level. At the bottom head towards the Waterloo Road exit. On exiting Waterloo Mainline Station cross the road at the pelican crossing, you should see a Tesco Express or Sainsbury Local opposite. After crossing, turn left and walk approximately 100 yards, this will bring you to Sandell Street with the Wellington pub opposite. Turn right into Sandell Street and walk approximately 50 yards, the UJC will be on your right-hand side up a flight of steps. There is a street-level lift to the right of the steps if required.

The UJC is for current and ex-service personnel so security is quite tight. As per UJC rules, we have to provide the administration office with a list of people who plan to attend our meetings 48 hours before the event. **Therefore, if you are planning to attend the meeting on 10<sup>th</sup> February 2018 at the UJC please telephone me on 01455 613826 or email me at [rflemming@talktalk.net](mailto:rflemming@talktalk.net) by Wednesday, 7<sup>th</sup> February 2018 at the latest.**

Tea and coffee will be available in the Reserve Bar Lounge from 10.30 (where our meeting will be held) but there is a buffet by the entrance that serves tea/coffee pastries, etc. should you arrive early and want something to drink/eat.

The UJC offers excellent meal opportunities, either in the bar or restaurant which attendees are free to use. Prices of food and beer/wine are very good. There is also the pub and Italian restaurant just across the road from the UJC.

## **GUERNSEY MONTHLY MEETINGS**

**CISS and RPSL members are welcome  
to attend monthly meetings in  
Guernsey, contact John Triggs on  
01481 725847 or [jtriggs@cwgsy.net](mailto:jtriggs@cwgsy.net) for  
further details of where and when.**

## **COMPETITION DAY 10<sup>TH</sup> February 2018**

by Alan Moorcroft FRPSL

I am pleased to say Graham Winters FRPSL will once again judge our annual competitions.

Members who have entered previous competitions have found Graham very helpful with his comments and advice which has enabled them to go on and improve their entries and enjoy the experience of putting together 16 sheets from their collection in a manner that helps with the way they write up their collections.

Please consider entering one or more of the Society competitions which will be held on Saturday 10<sup>th</sup> February 2018. We need enough entries to do justice to our competitions and to the Judge.

**This years' competitions are for: Stamps, Postal History, Occupation Postal History and Markings, Postcards, Open Philately, Ephemera and Previous Winners.**

The competition rules were published in *Les Iles Normandes* Volume 35 No.4 December 2016.

Absent members can enter any of the competitions by sending photo copies.

If you have any questions or need any advice please contact me, Alan Moorcroft, address on the inside front cover of this Journal.

## **News of Members**

We are pleased to announce the achievement of Life Membership awarded to - 1599 Trevor Williams, 1602 Eddie Morris, 1607 Brian Coles, 1608 Peter Adams, 1617 Chris Cole, 1620 Theo Gordon, 1621 Graeme Harris, 1622 Timothy O'Shea, 1623 Robert Porter.

Congratulations to our following members in their exhibition awards –  
John Sussex RDP FRPSL Silver (PH). Third Issue of GB Postage Due  
Labels 1994 - York National Exhibition.

Jon Aitchison FRPSL Gold (Rev). Guernsey Revenue stamps –



Finlandia 2017.

Chris King FRPSL Large Gold. Schleswig: From Danish Duchy to Prussian Province – Early Mail to 1867 – Bandung 2017.

Christine Earle FRPSL Gold. They also served – Stampex 2017.

Graham Booth FRPSL Gold. Royal Mail Steam Packet – The First 2 years - Stampex 2017.

Graham Booth FRPSL Gold. Anglo Australian Clipper Mail 1855-56 – Stampex 2017.

Phil Kenton FRPSL Large Silver. Registered Mail to and from the British Isles 1714-1901. Stampex 2017.

Brian Sole FRPSL Vermeil. Guernsey Stamps from Occupation to Europa – Stampex 2017.

Jon Aitchison FRPSL Gold. Ballon Monte to the Channel Islands and other Mail during and immediately after The Siege of Paris 1870-71 - The Interfed Competition (Essex) Stampex 2017.

Brian Sole FRPSL Large Vermeil. Guernsey Christmas Issue 1985 – The Interfed Competition (Surrey) Stampex 2017.

### **Member's Meeting, London 16<sup>th</sup> September 2017** by Richard Flemming.

Thirteen members attended the Members' meeting. Attendance may have been low as this meeting was held only 24 hours after the Parsons Green bomb incident. The theme for the day was "Transport".

As usual, the meeting commenced with a 52-lot room auction with Nick Stuart acting as auctioneer. 26 lots were sold with net sales of £260.

Following the auction, Jon Aitchison provided a wide-ranging 8-frame display of Transport related material. Jon apologised to members as some may have seen some of the material at our previous Guernsey Member's Weekend. Most of the material on display related to Guernsey and included picture post cards and real photographs of horse-drawn carts, buses with solid rubber tyres and buses with pneumatic tyres. Examples of ephemera included Horse and Pony tax documents, Guernsey Cycle Tax 'discs', WW2 Petrol Ration book and staying with WW2, German Occupation Car Permits. There were examples of Guernsey Road Tax discs and a Sark Driving License for tractor and horse carts. Finally, Jon concluded his fine display with a multitude of bus tickets from the 1970s-1980s.

Following lunch, John Hurst showed thirty-three post cards and real photo cards of the Sark ambulance, from its early days as a horse-drawn vehicle to the period when it was tractor hauled. There were also examples of Sark's fire engine and Sark's lifeboat.

Nick Stuart's "Transport theme" was based on the horse and cart that appeared on the 1948 2½d stamp for the 3<sup>rd</sup> Anniversary of the Liberation of the Channel Islands issue. The image was taken from a large lithographic print by Edmund Blampied "Vraic Men (Vraic Farmers)". For this issue, Nick showed a self-addressed FDC by the designer, Edmund Blampied and a card with the 2½d stamp signed by Blampied and Wilfred Paling, the then Postmaster General. He also showed gutter pair FDCs from Guernsey and Alderney including the 1979 issue "History of Public Transport", the 1981 issue titled "Inter-Island Transport" and the 1989 issue of the 50<sup>th</sup> Anniversary of Guernsey Airport.

David Laurillard's theme was "Mail transported around the Islands" including mail from Guernsey to Herm "carried" by a swimmer from the Guernsey Swimming Club to Herm during their annual race. David also mentioned a USS minelayer that was lying off Dublin when a crew member dropped a bottle overboard with a message. David thought he would do the same and dropped four sealed bottles overboard whilst on a cross Channel ferry with a message inside. He was pleased to report that he received two replies. David also showed an envelope and insert for the Herm Pigeon Post service, and sticking with the "flight" theme, he also showed mail from the first flights for Jersey and Guernsey.

David Winnie was pleased to show two recently acquired items of mail, both relating to WW1 and Jersey Sub-Post Offices. First was a cover from St Martins to Holland opened by censor and sealed using black on pink censor tape. This was censored during the first week that UK civilian mail to Holland was censored.

The second item was a similar cover of civilian censored mail, but from St Aubin Sub-Post Office and posted in October 1914 shown below on the next page.



To close the meeting Richard Flemming showed examples from his collection of Guernsey and Jersey ship letter handstamps on mail, including the 1851 sloping JERSEY/SHIP-LETTER in blue, of which this is the only known example.

## Jersey 1d Views Wrongly Dated Block

by Nick Stuart

I have acquired some blocks of Jersey Views and one of them is a 1d block dated 25.2.44 illustrated below.



According to the catalogues there was a fourth printing on Monday 28th February 1944 and I have blocks with that date.

I notice that the 2½d second printing was on Friday 25th February 1944 so this 1d block may have been one of the first sheets dated before the printers realised they had not changed the date?

I would be interested to know if any other member has got examples of wrongly dated blocks especially of the 1d.

Another conundrum I have found is the numbering of the sheets. I would have expected the sheets to have been numbered sequentially and the number linked to the total number printed.

For example there were 8,000 sheets of 60 stamps printed of the ½d value, spread across three print runs.

I have a block from the 1st printing numbered 33137, from the 2nd printing numbered 30715 and the 3rd printing numbered 23791.

For the 1d 20,000 sheets were printed across four runs: 1st printing 22376, 3rd printing 23231 and the 4th printing 55492. However, I do not have an example of the 2nd printing with the sheet number on it. I do have another sheet from the 4th printing numbered 55879 with a black 9 in the interpanneau column.

For all the others there were two print runs with each value having 6,000 sheets printed -

1½d: 1st printing 16742 and the 2nd 12776

2d: 1st printing 11267 and the 2nd 05449

2½d: 1st printing 99014 and the 2nd 64250

3d: 1st printing 93085 and the 2nd 91923

Has any member an explanation for such random numbering?

## **CHANNEL ISLANDS' LOCAL ISSUES**

**HERM, JETHOU, LIHOU,  
ALDERNEY PARCEL DELIVERY  
SERVICE, COMMODORE SHIPPING  
COMPANY,  
CHAUSEY AND OTHER FRENCH CHANNEL  
ISLANDS,  
PRIVATE ISSUES AND REVENUES.**

**Regular retail lists and auctions**

Please contact me for your copy today.

**JON AITCHISON**, Old Tithe Hall, Start Hill,  
Near Bishop's Stortford CM22 7TF, United Kingdom.  
Telephone U.K. 01279 870488. Email  
[britishlocals@aol.com](mailto:britishlocals@aol.com)

## 1940/41 The 'Difficult Period' for mails between the Occupied Channel Islands and France.

by Geoff Cory



I recently acquired this cover, which has no information at all on the reverse side. The cover has been slightly reduced to the right hand side of the stamps and address.

Because the cover was clearly unusual I approached Michael Wieneke for an opinion and the following is an edited version of his view. (This cover is from what has become known as the "Difficult Period" when mails between the Channel Islands and France were carried in a "semi official way". This was usually by members of FK515, but it is thought that other methods were also adopted, but cannot be named. This cover was sent through a semi-official channel from Guernsey to Cherbourg and was then delivered by French Railway mail, thus the "Cherbourg A Paris" cancel to its final destination, Monsieur Croizier, in Le Havre. Because the cover was placed in the French internal mail system no censorship was applied. The cover has a 2d George V definitive bisected diagonally and a 2d 1940 Centenary issue.

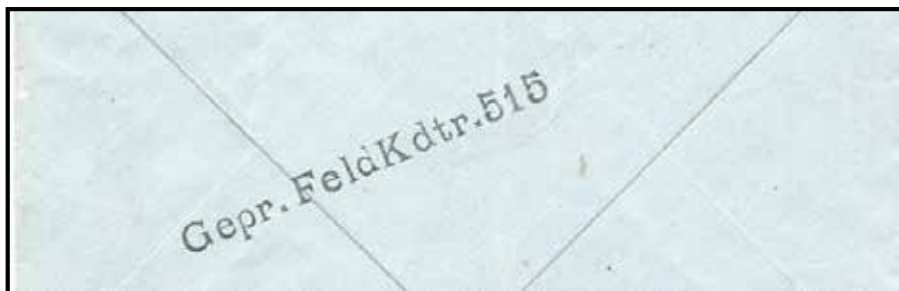
It is therefore very likely that the cover travelled and was delivered between 27th December 1940 and 1st February 1941. I am only aware of a dozen or so covers that were taken from or delivered to the Islands during this difficult period).

I have not personally seen a George V bisect cover, or any cover with British stamps only, sent through the French Railway mail system following occupation of the Islands. I would be very interested to know if other members have similar covers, particularly for the "Difficult Period"?



I also illustrate another unusual cover from the "Difficult Period" as a comparison which was also sent through the early semi-official channel. It is from Jersey to Paris and has 20 and 5pf German stamps. These are cancelled with the Feldpost single circle datestamp for January 1941, the unusual code "a" indicates it was therefore carried to France and cancelled there, with a straight line Gepr.FeldKdtr.515 on the reverse shown below.

The sequel to this story follows with Michael Wieneke's article '*The Difficult period*' on the next page.



## **The ‘Difficult period’**

by Michael Wieneke

During the period July/August 1940 to 6<sup>th</sup> January 1941 civilian mail-communication between the Islands and the Continent “by Rule” was impossible for Channel Islands civilians, but there was a lot of mis-interpretation and mis-understanding of the Rules issued by the German High Command in Berlin and the German High Command in Paris.

Thus, the best example of this confusion was the interview by Dr. Maas with the Guernsey Evening Press and The Star newspapers dated 10.7.40 in which people were told to deliver their covers directly to FK 515 for onward transport to the continent and elsewhere. FK 515 then had to put these mails into a postal channel, that did not really exist - that indeed was “a big problem”. Because all mails from Channel Island civilians by law were illegal, they did not establish a stable channel for posting. Mail was put into sacks, brought by ship to Granville and then to the “next post office” (German fieldpost or French mail”).

Indeed the High Command in Paris with the Order from 18.7.40 (published 29.7.40), re-established civilian postal communication inside occupied France. With the Order dated 23.8.40 (published 27.8.40) the High Command in Paris also ordered that any Rule/Order for Occupied France was also valid for the Channel Islands too

These two Orders brought about a lot of misunderstanding, because the Officers of FK 515 thought the Channel Islands were to be treated as a part of Occupied France and therefore postal communication would be possible in due course. But they did not see that the Channel Islands were still part of Great Britain and not part of Occupied France, even if the FK 515 was a



part of the administration of Occupied France. They also did not recognize, that only mail inside the occupied parts of **France** was allowed, not with the unoccupied parts of France and no mails crossing any border!

Thus covers of that period from the Channel Islands by Rule normally cannot exist. The Rules/Orders of the German High Command clearly said “mail inside occupied France only”, because of that – by Rule/Order – it should have been impossible to receive mails from unoccupied France or anywhere else like the Channel Islands, but mail like that exists! In general, the receiving postal authority had to accept the stamps on a cover if the sending postal authority did not add a Postage Due-mark saying “Invalid Stamps”. This was a UPU-rule. Because of that, covers arriving at the French Post Office with the correct threepence franking were accepted and the stamps were cancelled (See the “Montmartin sur Mer-cover”), it does not matter if there was a bisected stamp on the cover, because there was no Postage Due-mark! By the way, I received registered covers from the former Yugoslavia when it was broken up into pieces from towns in the Bosnian territory with stamps that were not issued by the Postal Authorities. They were delivered to my home without any problem and no Postage Due-marks! In difficult times many things happened that could not occur in normal times, especially in the sector of postal communications. If one looks into the Postal History of other European countries in the period 1919/1920, following the First World War and last but, not least, the period when the USSR split into many countries and territories, you will find many crazy things.

By the way, even many German collectors were not able to understand these problems from the early period of postal communications with the Channel Islands, hence one can find such material very cheaply in auction. Besides this we know that with Kommandanturbefehl No. 4, dated 10.7.40, ordered by Kommandantur der Insel Guernsey, civilian postal communications were allowed and restricted to “German Civilians, Persons with German roots or familiar connections in Germany and for Neutrals with Germany, occupied territories, German Allies and neutral countries.” With this Order it was said the “usual rules for fees” (i.e. German fees) were valid. All mails had to be sent via the Feldkommandantur. Do you know which stamps at which rate you had to affix to your cover addressed to France? The Germans did not have problems, German fees for foreign

countries = 25 Pfennig! People in the Channel Islands of course were thinking of the British fee of threepence in British stamps!

Now compare the known existing items that left the Channel Islands and reached their destinations. The cover (with the bisect in the article before this) shows exactly threepence, the British foreign fee, and so did all the “Vice Consul Lisbon letters” and the two earliest known letters to France with a Feldpost cancel dated 25.7.40! But...!

Some Islanders obviously were cleverer (especially Mr. Le Gentil) and asked the Germans for the fee and got the answer “25 Pfennige for letters, 15 Pfennige for postcards”. All this did not answer the vital question “How did these items leave the Islands?” This indeed remains a question that will probably never be fully answered. We know that the Feldkommandantur sent sacks with mail – accompanied by German soldiers – by ship to France for posting at the next Post Office. But which one was the next? A German Feldpostamt or the French Post Office? Obviously they did both, depending on the situation, because there were no clear regulations. Granville was the most important supply harbour for the Channel Islands and close to Granville there was the railway station Valonges with the important line “Cherbourg – Paris”! Now we have an explanation for the French railway-cancellation “**Cherbourg a Paris**”.

The second cover in the previous article again is most interesting (and scarce of course), because it shows the correct German foreign rate of 25 Pfg. It was also cancelled by a feldpost canceller with code “a”, dated 6.1.41. This was the exact opening date of the newly established Jersey office. But this cancel was not the “First Day Cancel” of the new Feldpost office, but the print of the cancel used in the Head Office in Granville.

From the Le Gentil correspondence (one item was in my collection) we know postcards addressed to “V.B.Collins, S.S. SPINEL, c/o Mons. Joualt, FK 515 Granville” showing the same date and the same code “a” within the canceller as the item in the previous article and this cover again shows the “semi official status” of this mail-connection, because it shows the local censor mark from FK 515. Contrary to the Le Gentil correspondence, this previous cover looks very commercial.

I hope these comments will help members to understand items from the ‘Difficult period’ a little better.

**Ed.** To gain a little more background to this interesting situation and to understand the difficulties the Germans had in occupying so much of

Europe so quickly, events took time to gain some order and anything could and probably did happen? In this context the reader may also find it useful and indeed interesting to refer to the paragraphs in the Late O.W. Newport's *Stamps and Postal History of the Channel Islands* pages 124/5 re the answers given by the Postmistress of Montmartin-sur-Mer, albeit first published in 1972, which highlights some of the confusion and variances in practice in that early period!



## Channel Island Postal BidSales

Gategny Chambers, 1st Floor, Bosq Lane, St. Peter Port, Guernsey, GY1 2LP.

Tel: 01481 727353/Fax 01481 725981 Email: [dtomlin@cipostalbids.co.uk](mailto:dtomlin@cipostalbids.co.uk)

Postal Auction catalogues are produced 5 times a year and include a wide variety of Postal History and stamp issues. Including specialised listings.



We offer a wide range of Channel Islands and Isle of Man stamps in our Retail Catalogue.

Please visit our Website:

<https://www.cipostalbids.com> for all these and much more including Special Offers of rare and scarce items. Catalogue available by post on request.



# **JERSEY and GUERNSEY**

**A large stock of all issues from their first issues in October 1969 to date. Our stock includes Mint, Used, FDC and Presentation Packs also a large Stock of Pre-Independent issues of Occupation and Regionals.**

**Send for our latest Price List today (Free of Charge) and see for yourself.**

**We also stock C. I. Postal History & Postcards L.L. and Allix wants list welcome.**

**G. ROBBE LTD    PTS**  
**YORK CHAMBERS**  
**YORK STREET**  
**ST HELIER JERSEY JE2 3RQ**  
**TEL 01534 723084 FAX 01534 767680**  
**E.MAIL: [robbestamps@hotmail.com](mailto:robbestamps@hotmail.com)**

## SCARCE UNDERPAID COVER from AMERICA

by Gerald Marriner FRPSL



I illustrate above a recent acquisition. This up-rated postal stationery cover was sent from New York to St Clements, Jersey. The cover was posted at the basic 5ct letter rate in February 1900. However, this cover was over ½ oz hence it was surcharged on arrival in Jersey. The Jersey arrival datestamp (on reverse) is shown hereby. The cover bears three Jersey surcharge marks. There is a large '5' – relating to 5d to pay – written in manuscript. I believe this to have been applied in Jersey because I have a similar 1902 underpaid cover with a manuscript '5d to pay'.



The cover shows an early example of the scarce Jersey boxed '**More to pay** /409' handstamp which was brought into use in 1882. Additionally, the scarce Jersey hexagonal 'Taxe' handstamp without value was applied in black. (SG cat no. JE10). This marking was introduced in 1890 and this cover shows a very early example of its use. I can only record one earlier date – 1896.

## 'waists getting waspish' by Leopold Mayr

## A Review by Alan Moorcroft FRPSL



I did not think it possible a book could be written providing new information, a fresh look and an in-depth analysis of the operation of The Red Cross Postal Message Scheme which operated in Guernsey during the German Occupation. I thought David Gurney's *The Red Cross Civilian Postal Message Scheme with the Channel Islands during The Occupation 1940-1945* was the definitive study and publication on this subject. How wrong I was. This masterpiece of research and authorship provides updated and new information and documents the detailed working of the system in Guernsey

which will be fascinating and instructive to anyone interested in the German Occupation of the Channel Islands as well as to students of Red Cross Mail.

The book starts with the background to the Red Cross Message Scheme and looks at how each of the parties involved; the German Feldkommandatur, the Guernsey Post Office, the Newspapers, the Controlling Committee and the Red Cross Bureau operated the scheme. It examines in detail the replies to incoming messages, special messages, originating enquiries from Guernsey, the Vega summaries and messages from the smaller Islands. The daily working of the Bureau is examined with the Bradshaw cards, how the forms were sorted and numbered, typed and batched for passing over to the Germans for despatch. Details of the number of forms handled, the numbering systems employed, the varieties of Bradshaw cards and an explanation of all the cachets and markings found on the



messages is examined. An analysis of the first 12 batches of messages received, the details of the people involved in the typing of the forms, the sub-types of Bradshaw cards and Guernsey Red Cross mysteries exemplify the detail that Leo has gone into in all aspects of the operation of the Guernsey Red Message Scheme. The book concludes with a helpful check list for the known cachets, endorsements, forms, cards and leaflets with notes about their scarcity.

The inspiration for this title is revealed on the back cover illustrated on the previous page. Leo is to be congratulated for publishing this book in English and for its title which is so intriguing and intuitive. *ANM*

**Priced at only £6.00 plus postage and packing of UK 2nd class £2.50, Europe £6.00 and Rest of World £8.75 this 76 page A4 very well illustrated book is available from CISS Book Sales at 64, Falconers Green, Burbage. Hinkley. Leics. LE10 2SX.**

**Copies of this new book are with us and will also be available for sale at our London meeting on Saturday 10<sup>th</sup> February 2018 and also at the Jersey Weekend meeting 20<sup>th</sup> to 22nd April 2018.**

## **ANY UNWANTED SOCIETY JOURNALS?**



Please do **not** throw your Journals or old Bulletins away. Send to the Membership Secretary, Mark Bailey 36, Jerry Moor Hill, Finchampstead Wokingham RG40 4UG for recycling to other members.

## St. Sampsons, Guernsey 1916 registered letter to Postal 99 on the Western Front.

Our member, Jerry Tomes, writes in regard to the article on page 21 of Volume 36, number 3, Sept 2017.

Graham Mark is correct in attributing the 320th Reserve Infantry regiment (320RI) to the 52nd Reserve Infantry Division (52DR).

This division was at Verdun from 4/6/1916 until the 15/6/1916 fighting between Thiaumont and the Bois de Vaux Chapitre.

It was sent to the Vosges to take over a 'quiet' sector between Lembach and the Vallee de la Luache on the 3/7/1916 until 1/9/1917. It re-entered the line north of Verdun on the 11/9/1917.

My reference is : "Pour la France. A Guide to the Formations and Units of the Land Forces of France 1914-18". Michael Cox and Graham Watson.

Published by Helion & Co Ltd. 2012. ISBN 978 1 907677 14 4.



## A new CISS Monograph 'waists getting waspish' by Leopold Mayr.

The first in a new series of A4 Monographs to be published by your Society this detailed 76 page study looks at the functionality and procedures of the Guernsey Authorities and the Guernsey Red Cross Bureau during the German military Occupation of the Island 1940-1945.

**We are selling this new book for only £6.00 plus postage and packing:- UK 2nd class £2.50, Europe £6.00 and Rest of the World £8.75**

**See the full Review of this new book written by Alan Moorcroft FRPSL on page 20.**



**Timmer Ltd 25 July 1940 cover to Dr Maas in Guernsey.**  
by Geoff Cory



I have recently acquired a rather ordinary looking cover, but it is of real interest and I wonder if other Members have similar or could add to the history. It is a 2½d rated cover with a fine machine cancellation for 25 JULY 1940 on a 2d GVI Centenary and ½d GVI definitive. The back has only an



impression of the machine cancellation from another cover. Obviously this is very early, just three weeks into the Occupation. The really interesting aspect is that it is from Timmer Ltd to Dr. Maas at Government House. Members may not be aware that Timmer Ltd was considered a German

collaborator by many and at the conclusion of the war they were served with a "War Profits Tax Levy". Mr Timmer was a Dutch citizen married to a Jersey girl and he was very quick off the mark to offer agricultural/horticultural services to the Germans. As the cover is so early, I suspect that this could very easily have been Timmer's first approach to the Germans, he certainly would not have had any language difficulties with them!

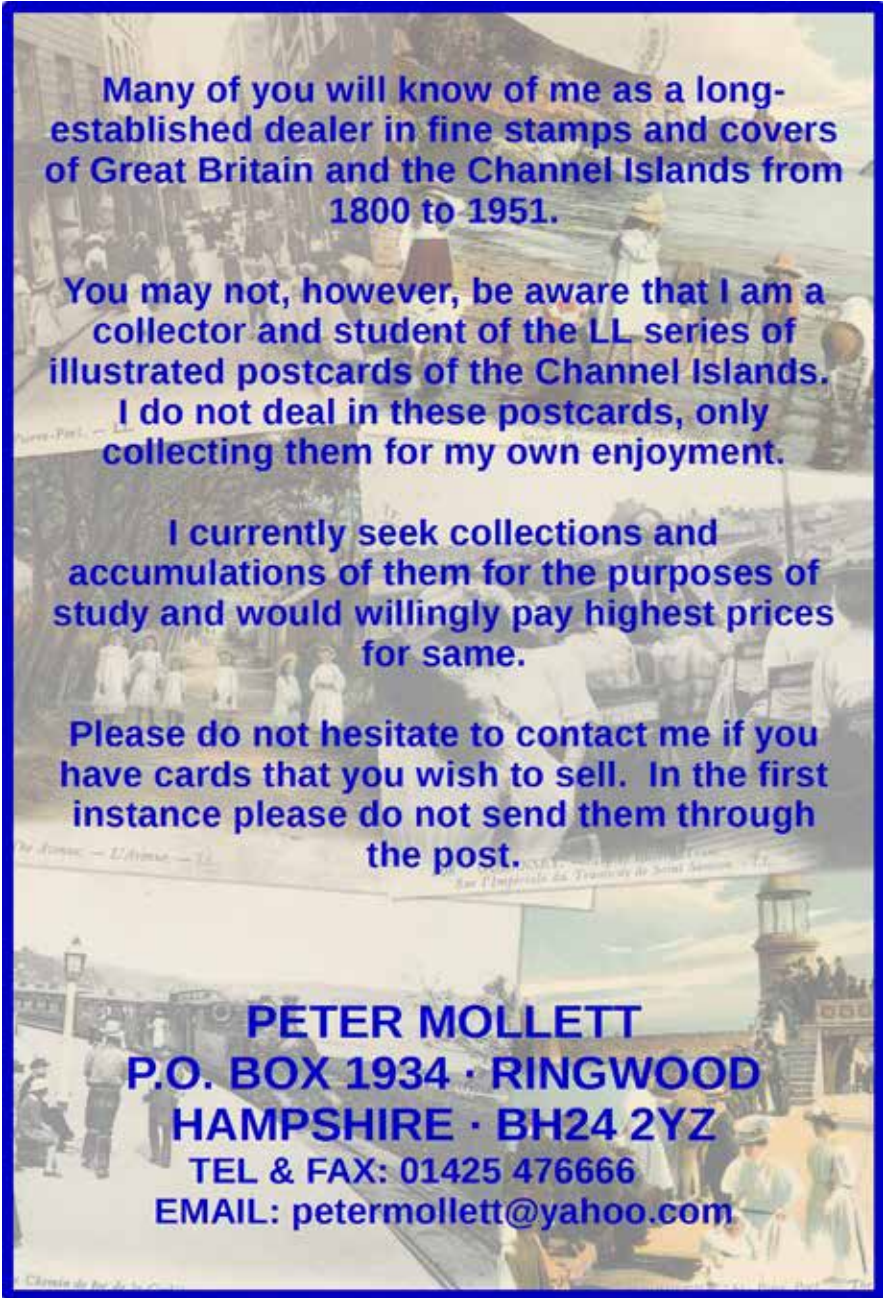
I would love to find any further information about Timmer, the timing and his relationship with Dr Maas, if any member can help please?

### **PAST JOURNALS and BULLETINS.**

The Society has a stock of past issues of the **Bulletins** and the Journal **'LES ILES NORMANDES'**. The Bulletins are available at £0.50 each, and the Journals at £1.00 each, postage and packing is extra. The indices to both the Bulletins and Journals can be found on the website; **[www.ciss1950.org.uk](http://www.ciss1950.org.uk)**

To enquire about past issues please contact, Mark Bailey at 36, Jerry Moor Hill, Finchampstead Wokingham RG40 4UG or email:

**[membership@ciss1950.org.uk](mailto:membership@ciss1950.org.uk)**



Many of you will know of me as a long-established dealer in fine stamps and covers of Great Britain and the Channel Islands from 1800 to 1951.

You may not, however, be aware that I am a collector and student of the LL series of illustrated postcards of the Channel Islands.

I do not deal in these postcards, only collecting them for my own enjoyment.

I currently seek collections and accumulations of them for the purposes of study and would willingly pay highest prices for same.

Please do not hesitate to contact me if you have cards that you wish to sell. In the first instance please do not send them through the post.

**PETER MOLLETT**  
**P.O. BOX 1934 · RINGWOOD**  
**HAMPSHIRE · BH24 2YZ**  
**TEL & FAX: 01425 476666**  
**EMAIL: [petermollett@yahoo.com](mailto:petermollett@yahoo.com)**

## A matching Jersey Red Cross message reply with an S.S. Vega abbreviated summary message by Olaf Beecken.

I show on the following pages a German Red Cross form from Jersey dated the 3<sup>rd</sup> December 1943 sent by Miss J. Ellis of Bagot, Jersey addressed to Mrs Jesse Noresse of Manchester. On the reply side is an undated answer. It seems as if the original message form completed the first part of its journey to England fairly quickly judging by the various datestamps on both sides of the form. This is surprising given the developing and changing war situation at that time.

The most interesting aspect of this form or rather the reply is that I have acquired this Jersey Vega summary message which it can be readily seen matches well with the original reply message as I illustrate by comparison:

*Dear Children, **ALL WELL, Joe with us. Be with you soon. Had week By Sea. Colin Bathed, going often in Summer. Love From ALL. Jessie.***

This is a rare matching as the Jersey summary messages are by their very nature very scarce. We do not know exactly on which Vega voyage this summary message was carried, however it can't be the March voyage because the number on the sheet is 1634 whereas only 1440 summary messages are reported for the March voyage.

Leo Mayr illustrates a similar matching pair of messages in his book **waists getting waspish**, but that is a message from England whereas my pair includes a reply from England, so the message form took a long long way to reach its destination. Right now Leo and I think that the original message forms were taken from Lisbon to London after the war on board the S.S.Vega and were then taken on to the Islands, however there is no proof for this suggestion.

We now know for sure that on the Vega lists of both messages and replies were carried.



G 5622

Deutsches Rotes Kreuz

Präsidium / Auslandsdienst  
Berlin SW 61, Blücherplatz 2

## ANTRAG

an die Agence Centrale des Prisonniers de Guerre, Genf  
— Internationales Komitee vom Roten Kreuz —  
auf Nachrichtenvermittlung

## REQUÊTE

de la Croix-Rouge Allemande, Présidence, Service Étranger  
à l'Agence Centrale des Prisonniers de Guerre, Genève  
— Comité International de la Croix-Rouge —  
concernant la correspondance

1. Absender Miss J. Ellis, Villa Flora, Plat Douet  
Expéditeur Road, Bagot, Jersey, Channel Islands.

bittet, an  
prie de bien vouloir faire parvenir à

2. Empfänger Mrs. Jessie Forrester, R.C.M. Bureau 751,  
Destinataire Teddum House, 16, Queen  
Manchester 2, ENGLAND.

folgendes zu übermitteln / ce qui suit :

(Höchstzahl 25 Worte !)  
(25 mots au plus !)

Dear Auntie Jessie, was delighted with  
message. Paul and I send our best  
love. Is uncle Joe still with you ?  
Mother sends love too. Josephine.

(Datum / Date)

3.12.43.

3. Empfänger antwortet umseitig  
Destinataire répond au verso

8 MAR Recd

On behalf of the Bailiff  
(Unterschrift / Signature)  
of Jersey's Enquiry and  
News Service  
26 JAN. 1944




4. Antwort des Empfängers :  
Réponse du destinataire :


(Höchstzahl 25 Worte !)  
(25 mots au plus !)

Dear. Children, Ahh Wehh, Joe  
with us. Be with you soon. Had week  
By sea. Colin Bathed, going often in  
Summer. Love From Ahh. Jessie.

(Datum / Date)



(Unterschrift)  
(Signature)



15 JUIN 1944

We have never seen any of these lists and I wonder where they could be. In Lisbon? In Geneva? In London? I simply do not know!

1634

No date.

From

Mrs. J. Noresee,  
Manchester.

To

Miss J. Ellis,  
Villa Flora,  
Plat Douet Rd.

All well. Joe with us. Had week  
by sea. Love from all. Jessie.

## Rare 1858 cover from Braunschweig in the Duchy of Brunswick to St Peters, Jersey by David Gurney FRPSL

I was most interested to find in a display given by The German Postal History Association DASV to The Royal Philatelic Society London on the 12<sup>th</sup> October 2017 frames presented by Dr. Hans Wilderbeek showing the domestic use of the Duchy of Brunswick's Postal Association issue and Brunswick foreign mail beyond the Austro-German Postal Association.



One particularly rare envelope shown, is believed to be the only known letter from the Duchy of Brunswick to Jersey on the 11<sup>th</sup> December 1858. Dr Wildebeek told me that he is not aware of any other similar letters from any other German State in that period, but would be very interested to learn if any member can report a cover into the Channel Islands from other States.





The second Anglo-Prussian agreement of 1<sup>st</sup> August 1852 specified the rate for letters via the PCM [Prussian Closed Mail, added] to Great-Britain at 8p or 7 sgr [Silbergroschen, added] (until 1859). This letter of the 11<sup>th</sup> December 1858 shown above, is fully paid using a 3 sgr postage stamp for the German and 4 sgr cash for the foreign share, to the very rare Channel Islands destination. My thanks to Dr Wilderbeek.

**On British Soil – Victims of Nazi Persecution in the Channel Islands** – An Exhibition at The Wiener Library 29, Russell Square, London, WC1B 5DP until 9<sup>th</sup> February 2018 Free entry. Opening hours: Monday-Friday 10am-5pm, Tuesdays: 10 am – 7:30pm.

*“Everything that people thought they knew about the German occupation of the Channel Islands is – at best – partial and – at worst – inaccurate,”* explains co-curator Dr. Gilly Carr on the motivation for a new exhibition at The Wiener Library.

During the German occupation of the Channel Islands 1940-1945, many thousands of people were persecuted, including slave labourers, political prisoners and Jews. Their story has been largely omitted from a British narrative of ‘standing alone’ against Nazism and celebrations of British victory over Germany.

***On British Soil – Victims of Nazi Persecution in the Channel Islands*** tells the stories of those persecuted, drawing upon The Wiener Library’s rich archival collections, files recently released by The National Archives, and never seen before items from the personal collections of victims of Nazi persecution.

## Exhibition highlights

### **A Jew in Hiding**

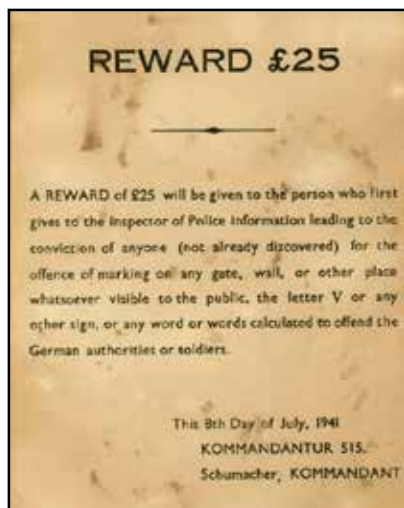
**Hedwig Bercu** (1919-2009) arrived in Jersey from Vienna in 1938. Even though she had registered with the authorities as a Jew in 1940, Bercu obtained work as an interpreter for the Germans around spring 1942. She began a relationship with a German officer whom she met through work, Lieutenant Kurt Rümmele.

In 1943, Bercu went into hiding with a local woman, Dorothea Weber. Rümmele supplied the



women with food, and Bercu remained hidden with Weber until liberation. After the war Bercu converted to Protestantism and moved to Germany where she married Rümmele. In 1960 she learned that her parents had been murdered in Auschwitz. Hedwig Bercu © Jersey Archives

**A contemporary handbill from Guernsey produced by the occupying authorities offering a £25 reward for any information about anti-German activities.**



### **A Woman Murdered in Auschwitz**

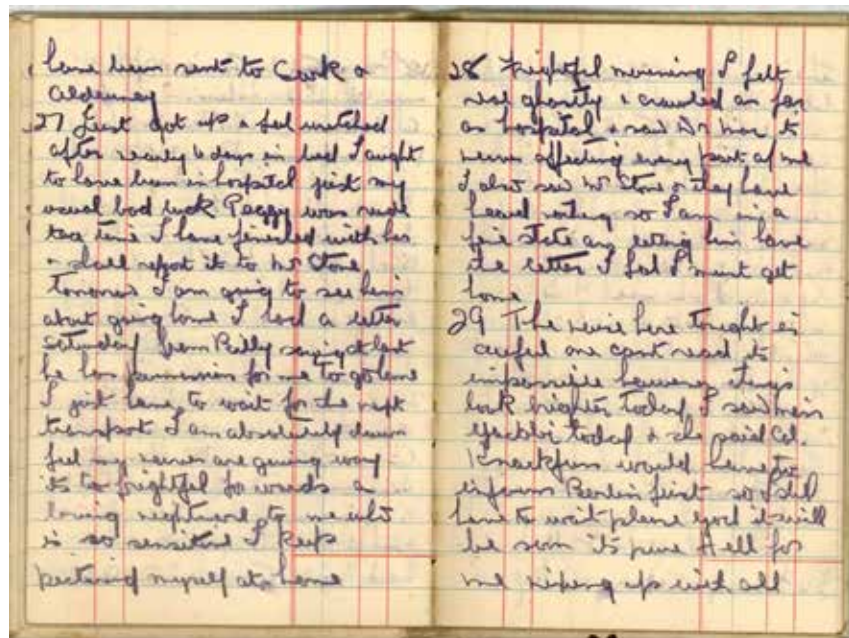
**Marianne Grunfeld** was born in Katowice, Poland, in 1912 to a German Jewish family. She moved to London in the mid-1930s and studied horticulture. In early 1939, Grunfeld took a job on a farm in Guernsey. She did not register as a Jew and may have been denounced to the authorities.



Marianne Grunfeld was deported to St Malo on 21 April 1942, along with two Austrian-born Jews, Therese Steiner and Auguste Spitz. Ultimately, the three were transported to Auschwitz via Drancy internment camp, arriving on 23 July 1942. Of their transport of 824 people, just 14 people survived the war. **Marianne Grunfeld** © Guernsey Archives

## A Deported British Jew

**Esther Pauline Lloyd** moved to Jersey in 1939, where she married William Lloyd. Lloyd registered with the authorities as a Jew in 1940 in accordance with the first Order against the Jews.



Lloyd was deported to France and Germany in 1943. She launched an extraordinary campaign against her own deportation and, remarkably, was repatriated to Jersey in April 1944. The Wiener Library has in its archive Lloyd's diary from her time in incarceration.

© Esther Pauline Lloyd's diary, Wiener Library Collections

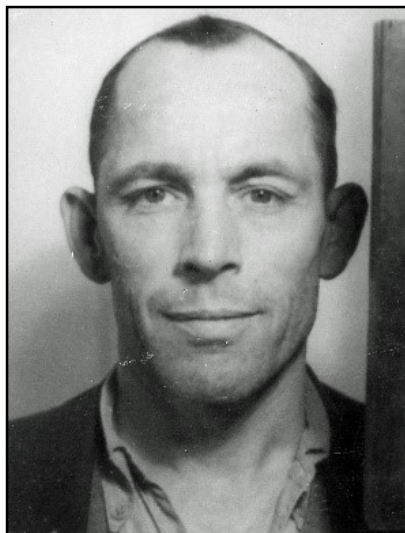
## Fate Unknown for 70 years.

**Joseph Gillingham** was a member of the Guernsey Underground News Service. For this, he received a ten-month sentence and was deported to a German prison. His fate and whereabouts remained unknown to his family for over 70 years.

Recent research has revealed that Gillingham was buried in a cemetery in Halle, Germany, after dying in the town's police prison in March 1945.

In March 2016, his only daughter Jean was finally able to visit her father's grave.

Joseph Gillingham © Guernsey Archives.



## **FORTHCOMING NEW STAMP ISSUES – 2018.**

### **GUERNSEY POST**

#### **1st February 2018 Year of the Dog**

Set of 6 stamps	£4.06
First Day Cover	£5.26
Presentation Pack	£4.96
Sheets of 10	£40.60
Souvenir Sheet	£4.06
First Day Cover	£5.26
Presentation Pack insert	£4.26

#### **14th February 2018 Endangered Species: Black Rhinoceros**

Miniature Sheet	£3.00
First Day Cover	£4.20
Presentation Pack	£3.90

## **ALDERNEY**

### **14th February 2018 50th Anniversary of The Wombles**

Set of 6 stamps	£4.06
First Day Cover	£5.26
Presentation Pack	£4.96
Sheets of 10	£40.60
Souvenir Sheet	£4.06
First Day Cover	£5.26
Presentation Pack insert	£4.26

### **Spring Stampex 18 Exhibition Sheet**

Miniature Sheet (2 stamps)	£1.00
First Day Cover	£2.20
Presentation Pack	£1.90

Not part of the official stamp programme - our third pictorial Post and Go set – Bailiwick Flowers will also be released at Stampex on the 14th Feb.

Strip of 6 stamps	£4.06
First Day Cover	£5.26
Presentation Pack	£4.96

## **JERSEY POST**

### **5th January 2018 Lunar New Year – Year of the Dog**

One stamp	£0.49
First Day Cover	£1.64
Presentation Pack	£1.64
Miniature Sheet	£1.00
First Day Cover	£2.15
Presentation Pack	£2.15

### **26th January 2018 1960s Popular Culture**

Set of 6 stamps	£4.61
First Day Cover	£5.76
Presentation Pack	£5.76
Miniature Sheet	£2.00
First Day Cover	£3.15
Presentation Pack	£3.15

Souvenir Sheetlet	£4.61
First Day Cover	£5.76
Presentation Pack	£5.76

#### **14 February 2018 Seasons - Spring**

Set of 8 stamps	£6.42
First Day Cover	£7.57
Presentation Pack	£7.57

#### **14 February 2018 Post & Go – Visiting Naval Vessels**

Set of 6 stamps	£4.61
First Day Cover	£5.76
Presentation Pack	£5.76

#### **9 March 2018 Europa 2018 – Bridges & Causeways**

Set of 4 stamps	£3.49
First Day Cover	£4.64
Presentation Pack	£4.64
Souvenir Miniature Sheet	£1.63
First Day Cover	£2.78
Presentation Pack	£2.78

Due to the loss of LVCR, Jersey Post now collects the appropriate rate of VAT on the various products at the point of sale and pre-pays HMRC on all orders entering the UK. Post & packing charges CI - £1.85, UK - £1.94 (incl. VAT), Europe - £ 2.00 and the Rest of the World - £3.00. Note: This is the basic charge only.

Jersey Post charges 5% GST to Jersey customers on CTO stamps (and complete CTO sheets) only.

## **C.I.S.S. PUBLICATIONS**

**Our current stock of merchandise at  
reasonable prices.**

**However postage is extra and will be invoiced.**

*Write to:* C.I.S.S. Book Sales at 64, Falconers Green, Burbage.  
Hinckley. Leics. LE10 2SX or Email – [rflemming@talktalk.net](mailto:rflemming@talktalk.net)

- |  |        |
|--|--------|
| 1. 'waists getting waspish' – A Guernsey Red Cross study (76pp)  | £6.00  |
| 2. The Post Office in the Smaller Channel Islands (154pp)  | £12.00 |
| 3. The Postal History of the Guernsey Sub-Post Offices (265pp)   | £10.00 |
| 4. Red Cross Postal Message Scheme with the Channel Islands<br>during the Occupation 1940-45 (389pp)                                     | £8.00  |
| 5. Islanders Deported Part 11 (246pp)  | £4.00  |
| 6. The Postal History of the Jersey Sub-Post Offices (376pp)<br>( <u>This book is reduced in price as staples are slightly rusting</u> ) | £15.00 |
| 7. Registered Mail of the Guernsey Sub-Offices 1968-1990 Vol 2   | £3.00  |
| 8. Registered Mail of the Guernsey Sub-Offices 1968-1990 Vol 3   | £3.00  |
| 9. Jersey & Guernsey Slogan Postmarks of the 20th \century (85pp)  | £7.50  |

**Also available:-**

**Binders** for 'Les Iles Normandes' holding 12 issues @ £4.50 each or  
three for £12.50 plus postage.

**Society Ties:** In blue or maroon with CISS motif @ £8.00 each plus postage.

Payment may be made by Visa/Access/Mastercard or Paypal.

Please quote your card number, expiry date and card settlement address.

**Please do not send payment until you receive an invoice  
for the cost of your order plus the postage and packing.**

# Channel Islands

## at Auction

Grosvenor holds regular specialised public auctions of Great Britain stamps and postal history in central London, heart of the international philatelic market, achieving consistently high results. Interesting Channel Islands material features regularly.



Each auction is available to view, with additional illustrations, on our website, **[www.grosvenorauctions.com](http://www.grosvenorauctions.com)**, and our exceptional printed catalogues are generously distributed, complimentary copies being available on request.

We work closely with collectors to ensure that presentation and prices meet vendors' highest expectations. Commission charges are generous, fully inclusive, and negotiable for valuable consignments. Contact **Andrew Williams** or **Glyn Page** today at the address below for further information on how Grosvenor can maximise the sale potential of your collection.

## GROSVENOR

399-401 Strand 2nd & 3rd Floors London WC2R 0LT

T: 020 7379 8789 F: 020 7379 9737 E: [info@grosvenor-auctions.co.uk](mailto:info@grosvenor-auctions.co.uk)

[www.grosvenorauctions.com](http://www.grosvenorauctions.com)