



**CHANNEL ISLANDS  
SPECIALISTS' SOCIETY**

December 2018

Volume 37 No.4

# THE CHANNEL ISLANDS SPECIALISTS' SOCIETY

*Founded in 1950*

*for the study of the stamps and postal history of the Channel Islands*

## OFFICERS

**President:** Gerald Marriner FRPSL

E-mail: gerald.marriner@gmail.com

**Chairman:** David Winnie

E-mail: davidwinnie1@aol.com

**Secretary:** Richard Flemming

64, Falconers Green, Burbage. Hinckley. LE10 2SX. E-mail: rflemming@talktalk.net

**Treasurer:** Robert Porter

3, Nursery Road, Hoddesdon. Herts. EN11 9LA. Email: robertwporter@btinternet.com

**Journal Editor:** David Gurney FRPSL

4, Kingscote, Tree Lane. Plaxtol Kent TN15 0QA. Email: nangurney1@aol.com

**Packet Secretary:** John Triggs FRPSL

“SUNNYSIDE”, La Gibauderie, St. Peter Port, Guernsey GY1 1XF. E-mail: jtriggs@cwgsy.net

**Auction Secretary:** Nick Stuart

3, Dudley Road, Walton on Thames, KT12 2JT E-mail:- nick\_stuart@talk21.com

**Membership & Subscription Secretary:** Mark Bailey FRPSL

36, Jerry Moor Hill, Finchampstead, Wokingham. RG40 4UG E-mail: membership@ciss1950.org.uk

**Advertising & Press Officer:** Stephen Wells

The Hollies. 42, High Street, Tarring. Worthing. West Sussex. BN14 7NR

E-mail: press@ciss1950.org.uk

**Competitions Secretary:** Alan N. Moorcroft FRPSL

2, Ramparts Court, Bakers Lane, Braiswick. Colchester. CO4 5BJ

E-mail: [anmoorcroft@btinternet.com](mailto:anmoorcroft@btinternet.com)

**CISS Internet address:- [www.ciss1950.org.uk](http://www.ciss1950.org.uk)**

Membership is open to all interested in Channel Islands stamps  
and postal history, postcards and ephemera.

Membership application forms can be obtained from the Membership Secretary.

Exchange Packets are circulated regularly. A Postal Auction is held twice yearly.

A 36 page colour Journal is published quarterly.

Meetings are held three or four times a year in London and the Provinces.

## ADVERTISEMENT RATES IN LES ILES NORMANDES

Outside back cover: £40.00. Full page: £30.00. Half page: £18.00

©The Channel Islands Specialists' Society

## SUBSCRIPTIONS and STANDING ORDERS

Will members please note the following points:-

1. Subscriptions, which are due on **1<sup>st</sup> January**, should be sent direct to **Mark Bailey** and **NOT** to any other officer of the Society. A Subscription Invoice will be sent in the December issue of the Journal.
2. All members may now pay by credit card or PayPal. The amount will be the appropriate subscription rate. Send your card details including number and expiry date to **Mark Bailey**, send your PayPal payment to **treasurer@ciss1950.org.uk**.
3. Overseas members may still pay by STERLING cheque drawn on a U.K. Bank. Non-sterling cheques and non-sterling currency notes will no longer be accepted. Money Orders in sterling currency are acceptable.
4. Members who have not paid by **14<sup>th</sup> February** are assumed to have resigned.
5. Standing Order forms should be **sent by members to their own bank** and not to the Subscription Secretary.

### **The new Subscription rates for the year 2019 are:-**

Countries	Class of postage	ANNUAL SUBSCRIPTION RATES In pounds sterling
Zone 1: Great Britain and Channel Islands	2 <sup>nd</sup> class Letterpost	Ordinary Member aged under 65 years, <b>£25</b> ; or if choosing electronic copy of quarterly journal, <b>£20</b> . Juniors, Members aged 65 years and over and Registered Disabled, <b>£15</b> ; or if choosing to receive electronic copy of quarterly journal, <b>£12.50</b> .
Zone 2: Europe and Rest of World	Airmail Printed Paper/ Small Packet rate	Ordinary Member, <b>£30</b> ; or if choosing an electronic copy of the journal, <b>£20</b> .

**Note from 1<sup>st</sup> January 2019 there will be no Life Member category.**

We are pleased to welcome the following new members: 2173 John Holroyd, Oxfordshire; 2174 Marco Lazzerini, Italy; 2175 Zachary Simmons, USA.

Member re-joined: 1798 Brian Sanders, Suffolk.

## **CONTENTS**

Secretary's Clipboard.....	3
COMPETITION DAY 9th February 2019.....	4
News of Members .....	4
Member's Meeting held Saturday, 22nd September 2018.....	5
Very rare Radio Message card from Sark .....	9
A Record Postcard realization (?) .....	10
Latest finds - block of GB 1/- POSTAGE DUE stamps, Hotel de la Pomme d'Or cachet and Jersey LL 86 .....	11
WWII Isle of Jersey .....	14
Red Cross Crash Mail .....	16
1840 Entire letter from Antwerp to Guernsey via London with a QV 1d black cancelled with London Maltese Cross ....	17
Two ' <i>Letter Forwarding Agents</i> ' in Jersey – ' <i>Care of</i> ' or actual? .....	20
A green GUERNSEY part Customs parcel post label .....	25
ALDERNEY – The Sub-Post Office re-opens in September 1945.....	26
Rejected Proof design of the war-time 1d Arms stamp of Guernsey.....	28
Feldpost registered letter used from Sark .....	31
Extraordinary London Meeting Report 14th July 2018.....	32
A 2nd "Carrefour" Registration label .....	33
New Guernsey Slogan.....	34
Forthcoming New Stamp Issues in 2018 .....	35

Whilst every care is taken in the production of this Journal statements expressed in articles in *LES ILES NORMANDES* are the sole responsibility of the author(s) and are not necessarily endorsed by the Editor or by the Channel Islands Specialists' Society neither of whom can be held responsible for the accuracy of the information therein or any consequence arising there from

## **EDITORIAL**

A reminder - our Competition Day on the 9<sup>th</sup> February 2019 so please have a go at entering. They are fun and you can learn so much – also a good meeting day with all the entries on display with such a range of subjects. Your Journal this time has another spread of interesting and important postal history articles and some new items too. Also some very unusual and rare Occupation items presented by one of our German members.

## SECRETARY'S CLIPBOARD

by Richard Flemming

As Christmas approaches it is hard to believe that we have now had a full year at the Union Jack Club and from comments received those members who have managed to attend any of the meetings held there have found it an enjoyable venue. There was some concern that attendance may drop, but I am pleased to say that it has held steady and it is really nice to see some new faces amongst the regular attendees.

A brief Extraordinary General Meeting was held prior to the Member's Meeting on the 22<sup>nd</sup> September to ratify the amendment to Rule 8(a) that sees the establishment of a smaller Executive committee which will manage the day-to-day running of the Society, as well as the Full Executive Committee. I am pleased to inform members that the motion was passed by a majority vote [see report on page 32 of this edition].

Our thoughts are also focussing on the Member's Weekend meeting which will be held in Salisbury, Wiltshire from 25<sup>th</sup> – 27<sup>th</sup> April 2019. You should find the booking form enclosed with this edition. If not please contact Gerald Marriner as soon as you can. Please return your form to Gerald as soon as you can as spaces are very limited.

The New Year also sees our Annual Competitions event and I am sure Alan Moorcroft, Competitions Secretary, will welcome your entry/ies. The 2019 event is on Saturday, 9<sup>th</sup> February with time for members' displays too.

### **Forthcoming meetings:**

15 <sup>th</sup> December 2018	Member's Meeting Theme: Letters M and N
9 <sup>th</sup> February 2019	Members' Annual Competition and members' displays
25 <sup>th</sup> – 27 <sup>th</sup> April 2019	Member's Weekend at Grasmere House Hotel, Salisbury, Wiltshire.
13 <sup>th</sup> July 2019	Member's meeting and Annual General Meeting
21 <sup>st</sup> September 2019	Member's meeting Theme: To be confirmed
14 <sup>th</sup> December 2019	Member's meeting Theme: Letters Q, R and S

**NB.** As well as the theme for the day, members may bring any recently acquired Channel Island philatelic related material to any meeting for display.

## **COMPETITION DAY 9<sup>TH</sup> February 2019** by Alan Moorcroft FRPSL.

I am pleased to say Graham Winters will once again judge our annual competitions. Members who have entered previous competitions have found Graham very helpful with his comments and advice which has enabled them to go on and improve their entries and enjoy the experience of putting together 16 sheets from their collection in a manner that helps with the way they write up their collections.

Please consider entering one or more of the Society competitions which will be held on Saturday 9<sup>th</sup> February. We need enough entries to do justice to our competitions and to the Judge. This year's competitions are for: Stamps, Postal History, Occupation Postal History and Markings, Postcards, Open Philately, Ephemera and Previous Winners.

The competition rules were published in *Les Iles Normandes* Volume 35 No.4 December 2016.

Absent members can enter any of the competitions by sending photo copies.

If you have any question or need any advice please contact me, Alan Moorcroft, address on the inside front cover of this Journal.

### **News of Members**

Congratulations to the following award winners:

Birthe King FRPSL, RPSL Medal for Meritorious service

Chris King RDP, FRPSL., RPSL Bacon Medal

John Sussex RDP, FRPSL Large Vermeil at York 2018 for British

Registered Mail 1952-1971

John Sussex RDP, FRPSL Vermeil at York 2018 for Third Decimal Issue

Graham Booth, FRPSL Large Gold at Stampex 2018 for Anglo Australian

Mail 1840-60: the transfer from sail to steam.

Brian Sole, FRPSL Vermeil at Stampex 2018 for Communications at Sea

Brian Sole, FRPSL Large Silver at Stampex 2018 for The Philatelic

Congresses of Great Britain 1909-1939.

Jon Aitchison FRPSL Large Silver at Stampex 2018 for Letters from spies

in the Channel Islands during the French Revolution, 1793-1794.

**We very much regret to have to record the recent deaths of 1620 Mrs Theo Gordon, Canada and 2085 Martin Wade, Lancashire**

## MEMBER'S MEETING, SATURDAY, 22<sup>nd</sup> SEPTEMBER, 2018.

Richard Flemming

The Members' Meeting followed the brief EGM and started with the usual 50-lot room auction. Those members and guests who attended the meeting were then entertained by some wonderful displays on the theme of 'The Occupation' or recent acquisitions.

To start the proceedings, **Olaf Beecken**, who travelled all the way from Hamburg for the meeting, produced some stunning items including a rare Radio Message Card sent from Sark from a soldier in the 3<sup>rd</sup> Company, 1<sup>st</sup> Battalion, 584 Infantry Regiment, 319 Infantry Division (Feldpost No. 30613D) who were based on Sark from July 1944 to May 1945. Not only was there the Radio message card, but Olaf was able to show the reply part too (illustrated on page 9). Also included in Olaf's display was a Registered letter from Feldpost No. 28916C based on Sark (see also page 31) and a Registered letter from Feldpost No. 46048, 4<sup>th</sup> Battery, Reserve Flak, 197 Infantry Division that was based on Alderney from November 1942 until May 1945 [This was the Secretary's father's unit whilst he was stationed on Alderney until he moved to Jersey towards the end of the Occupation].

**Gerald Marriner FRPSL** showed some items prior to the occupation of the Channel Islands including a telegram explaining that the evacuation of the Channel Islands was taking place. There was also an item of mail from India dated June 1940 addressed to Guernsey, but the recipient had already been evacuated to Devon by the time the letter reached the Channel Islands. There was also a letter from an evacuee which bore a **RETURN TO SENDER/NO SERVICE** cachet. In the early days of the Occupation there were problems sending mail between the Islands and here Gerald showed an item of inter-Island mail that stated **NO POSTAL SERVICE/UNDELIVERED**.

**Steve Wells** explained that although German military forces had occupied the Channel Islands from 1940 to 1945, the British Isles, prior to this, had very good relationships with Germany, showing

items of mail from the Channel Islands to support this, including a postcard dated 2nd September 1886 from Jersey to Frolich and Unger in Berlin, two examples of 1914 postcards sent from Jersey to Saxony and a 1954 printed postcard from Jersey to Berlin-Tempelhof [the airport there played a vital role in the Berlin airlift (April 1948-May 1945) only a few years earlier].

**Gavin Wood** showed a rare and colourful display of ‘Jersey views’ stamps, including ½d to 3d colour proofs, *Mise en train* proofs in black on pink paper for the ½d, 1d, 1½d and 2d (only these values issued in *Mise en train*). The *Epreuves-de-luxe* with tissue paper covering, in issued colours. Also included in the display was the ½d, 1d and 2½d final printer’s proofs and examples of the ½d – 3d used on cover.

**David Gurney FRPSL** took us back well before the German Occupation period showing some of the earliest endorsed Letter Forwarding Agents letters in private hands commencing in 1710 with an entire letter to Guernsey endorsed by Thomas Hilgrove of Southampton (see next page), an entire letter of 1711 to Guernsey endorsed by Richard Taunton of Southampton, two entire letters of 1715 and 1716 to Guernsey “*to be left with John Grove, Merchant, of Southampton*” with London Bishop marks (former Lord Mayor of Southampton).

Then followed two fragile entire letters of 1718 and 1719 “to be left at Messrs Bandinel & Co and Bandinel & Hillgrove” respectively, the latter endorsed *1:3½d to be paid to Capt Ahier*”, further endorsed entire letters were displayed through to 1759 and then two naval letters of 1774 from the West Indies to Guernsey, part of the Dobree correspondence, were examined in some detail. Both were rated 7d being the 1d inward ship letter charge plus 6d inland postage, one landed at Deal and the other at Dover, both with the respective town **SHIP LRE** handstamps. One was directed via the scarce London Forwarding Agent, Noah Le Cras and the other via William Seward in Southampton. David had transcribed the contents of both long letters and highlighted parts relevant to the naval and Island affairs of the time were read out. These were supported by leaflets of Nelson’s Dockyard in English Harbour, Antigua and an aerial pictorial



news colour photo cutting showing the natural harbours of this Island



which had been the main base of the British West Indies fleet since 1725.

The ship concerned was HMS Deal Castle, a 6<sup>th</sup> rate 24 gun frigate which was later lost with much of the British naval fleet in an immense hurricane some six years later.

David then showed the latest newly found Letter Forwarding Agent handling Ch Is mails, George & James Abel in 1814 London and then illustrated two long recorded Jersey names which are now believed not to be Forwarding Agents viz Godefroy, Sons & Co of 1842 and Jos Le Bailly of 1822 explaining the supporting evidence behind his findings. These two names are the subject of an article on pages 20 to 23 in this Journal.

This was followed by **Ron Brown FRPSL** whose display related to Le Bailly's correspondence, including mail from the French boarding school in Coutances to Jersey dated 1821 and 1823 and a letter dated 1822 relating to Joshua Le Bailly's school fees.

**Brian Sole FRPSL** showed mail with bisected 2d stamps used during the Occupation due to a shortage of 1d stamps on Guernsey. This included an example of a 2d bisect together with a 1d Guernsey 'Arms' stamp on a local letter and an envelope cancelled 16th April 1942 bearing 2x 1d French banknote paper stamps and ½d Guernsey 'Arms' stamp paying the 2½d letter rate.

**Alan Moorcroft FRPSL** showed a block of four Guernsey Star printed labels intended to be used as stamps, certified as genuine, the design for which was later used for the 'Sales Tax' labels.

**David Winnie's** display related to the reopening of the Alderney Sub-post Office on 21st September 1945, including a statement in the text "*Today G.P.O. has reopened*". David also showed a recent acquisition of four registered letters, including one dated 15th September 1931 from the Channel Islands to Limuru in "Kenya Colony". (Ed. This township was only some 25 miles from Nairobi).

**Nick Stuart** showed a rare first day cover of the Guernsey 3d 'Regional' dated 18th August 1958 which was cancelled by a Pleinmont Road cds and has a Pleinmont Road Registration label. This Sub-Post office was only in operation for eight years from January 1958 to October 1966.

Finally, **Richard Flemming** showed some recent acquisitions, including a 1734 entire from Jersey to Marseille sent via St. Malo bearing a **SMALO** handstamp and a 1698 entire from St. Malo to London that was probably sent via Jersey, bearing a very scarce **DE'S MALO** handstamp which was used on Channel Islands mail from 1698-9. Richard's 'Occupation' items included a post-D-Day letter dated 17th June 1944 (D-Day 6th June 1944) with a Feldpost datestamp for 22nd June 1944. Although the Feldpost struggled to get mail off the Islands post D-Day, this letter seemed to have made it as it was received in Geisenheim-Rhein on the 2nd July 1944.

**Very rare Radio Message card from Sark by Olaf Beecken.**

Abtender: \_\_\_\_\_

Wohnort, nach Zustell- oder Leitpostamt \_\_\_\_\_

Strasse, Hausnummer, Gebührensatz, Sendewerk oder  
Postfachnummer  
bei Unterbreitern auch Name des Vermittlers

**Oberkommando d. Kriegsmarine.**

Umstehende Nachricht wurde durch Funk aus der eingeschlossenen Festung **Dünkirchen** – Kanalinsele übermittelt. In dringenden Fällen in beschränktem Maße Antwortmöglichkeit über Rundfunk. Nachricht durch Brief senden an: „Kameradschaftsdienst West, Gruppe PK“, Haus des Rundfunks, Berlin-Charlottenburg, Masurenallee. Angabe von Dienstgrad, Vor- und Zuname sowie Festung erforderlich.

**Postkarte Feldpost!**

**Luise Nowka**

**Eichwalde Krs. Teltow**  
**Egonstr. 25**

Strasse, Hausnummer, Gebührensatz, Sendewerk oder Postfachnummer  
bei Unterbreitern auch Name des Vermittlers

© (P. 44) Δ C 54 III. A. 8

**15.10.1944: Radio Message Card**

The sender, Werner Nowka, was a member of unit 30613D (3<sup>rd</sup> battery IR 584), which was deployed on Sark from July 1944 to May 1945. He was registered as a Sark POW on Guernsey on 25.05.45. Text side below:

221/2330 Uhr Kanalinsele, den 15. Okt. 1944

**Meine Lieben !**

Mir geht es gut, ich bin gesund. Unsere Lebensverhältnisse sind hier unverändert geblieben. Wie geht es Euch? Habt Ihr Bombenschaden gehabt? Seid Ihr noch daheim? Wenn nein, wo haltet Ihr Euch jetzt auf?

Gebt mir bald Nachricht durch den Rundfunk.

**Werner**

The translation of the text on the reverse side of this Sark card is as follows:

**221/2330 Uhr**

**Kanalinseln, den 15. Okt. 1944**

**My dear ones!**

**I am doing fine, I am healthy. Life here is pretty much the same. How are you? Did you have any bomb damage? Are you still at home? If not, where are you now? Please let me know by a radio message.**  
**Werner**

The "radio message" refers to the Reichsrundfunk station in Berlin - Charlottenburg. People could send their messages there by letter. The messages went on the wireless at specific times for the different fortresses in the west. The broadcasting of these messages was then confirmed by the radio station to the enquirer by sending a confirmation postcard (see Michael and Leo's book on page 142). The German papers on Guernsey and Jersey also published these messages in case the soldier missed the message on the radio, for instance when he was on duty at that time.

221 means that it was the 221st message sent that day. As it was sent very late at 11.30 p.m. we may assume that the capacity of the transmitting station on Guernsey was about 250 messages per day. The card type is Heimann 1.02, by the way. The date is October 15th, 1944.

The card was posted in Wilhelmshaven on 16 October 1944. Eichwalde, where his family lived, is a place not far from Berlin. The German soldiers on the Channel Islands were well aware of the situation at home and knew of the allied bombings on the cities at home so this may be the reason why he specifically enquires about the situation at home.

### **A Record Postcard realization (?) by David Gurney FRPSL**

At Argyll Etkin's stamp and postal history auction on 27<sup>th</sup> September 2018 three real photographic postcards of the ship "Pourquoi-Pas?" in Guernsey harbour and/or members of the 1908 French Antarctic Expedition on the ship by Bramley with T.B.Banks & Co, Guernsey impressed in small lettering in exceptional fine condition estimated £120-150 made **£1,300.00!**

**Latest finds - block of GB 1/- POSTAGE DUE stamps, Hotel de la Pomme d'Or cachet and Jersey LL 86 by Henri Chartier**

I recently found this lovely block of 41 1/- deep blue postage due stamps used in Jersey on the 4<sup>th</sup> October 1947 on piece. Unusual!





Secondly another find has been this postcard sent to France in 1903 from Jersey depicting an unknown cachet in violet ink for the HOTEL de la POMME d'OR / 28 JUIL 1904 / 28 JUIL 1903 / L.MOURAUD / JERSEY. Can any member report another example in their collection?

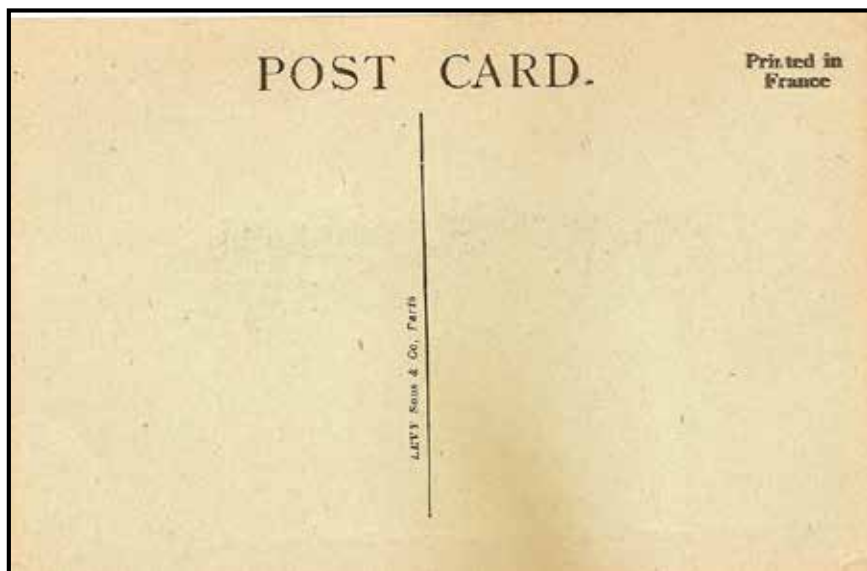


Finally my last recent find has been an unrecorded LL postcard as below in



sepia colour.

On the obverse of this sepia Jersey LL 86 postcard is the imprint LEVY Sons & Co, Paris on a white background.



### PAST JOURNALS and BULLETINS.

The Society has a stock of past issues of the **Bulletins** and the Journal '**LES ILES NORMANDES**'. The Bulletins are available at £0.50 each, and the Journals at £1.00 each, postage and packing is extra. The indices to both the Bulletins and Journals can be found on the website; [www.ciss1950.org.uk](http://www.ciss1950.org.uk)

To enquire about past issues please contact, Mark Bailey at 36, Jerry Moor Hill, Finchampstead Wokingham RG40 4UG or email:

[membership@ciss1950.org.uk](mailto:membership@ciss1950.org.uk)

## WWII Isle of Jersey

by Geoff Cory



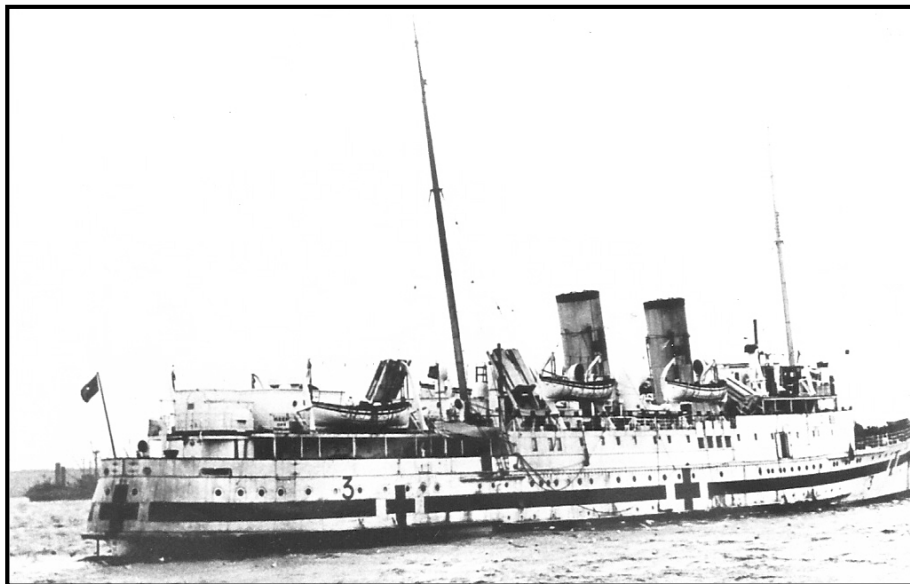
I believe this cover to be an unusual Channel Island WW2 shipping item. I first sailed on the Isle of Jersey from Jersey in March 1946, my family's first visit to the UK following the Occupation. Thus the ship has a special place in my childhood memories.

I was born in Jersey mid-way through the war and in later years my parents often related the hardships of the period to me in some detail. As an example, my father's weight at the beginning of the war was 15 stone and in May 1945 was only 9.5 stone! I was aware that the impact of the Occupation lived with them on an almost daily basis for the balance of their lives. In March 1946 it was decided that the family would visit relations in Bury St Edmunds for a month's holiday. Although rationing was still an issue, many items that were not available in the Islands were easy to find on the mainland. Following the privations in the





Islands, the ready availability of sweets, cakes and fun items felt like a miracle to my sister and myself. My Father on the other hand was very impressed with the Health Service and was able to secure new reading glasses and false teeth quickly and at no cost! Our exciting voyage to the mainland was undertaken on the Isle of Jersey, thus the ship has a special place in my childhood memories.



The Isle of Jersey played a very active part in WW2, first as a Hospital Ship and later as a Landing Craft. This cover was sent from the ship's Medical Officer in Charge to Robert Whitelaw (Aberdeen) Ltd., on 13<sup>th</sup> April 1942. At this time the craft was under the control of the Admiralty and was known as Hospital Ship 3.

Clearly this envelope contained something of value because an OHMS Official Paid envelope was used, but uprated to a Registered Letter by the addition of a three pence George VI definitive. Both the stamp and the Paid symbol were cancelled by a dumb double circle "Received from H M Ships" postmark and a H M Ships 110 Registration Label together with an oval Medical Officer in Charge cachet dated 13 April 1942 were applied. Robert Whitelaw (Aberdeen) Ltd were long time manufacturers and

suppliers of surgical Instruments and appliances to both the Royal Navy and the Army.

The Isle of Jersey was built for Southern Railways and its maiden voyage to the Islands was in March 1930. The Admiralty requisitioned the ship and converted her to a Hospital Ship in 1939. She was stationed at Scapa Flow and sailed in the Northern waters and the Mediterranean until early 1944. She was then converted to a Landing Craft and sailed to Sword Beach as a part of the D-Day Landings on 8<sup>th</sup> June 1944. She undertook a total of eleven voyages to and from the invasion beaches. She finally returned to Channel Island service in October 1945 and undertook her last crossing to the Islands in October 1959.

The three Isle ships, Jersey, Guernsey and Sark were requisitioned by the Admiralty during WW2. If other members have similar covers or letters that relate to the military service of any of these craft I would very much like to be made aware of such information?

### **Red Cross Crash Mail** by David le Maistre

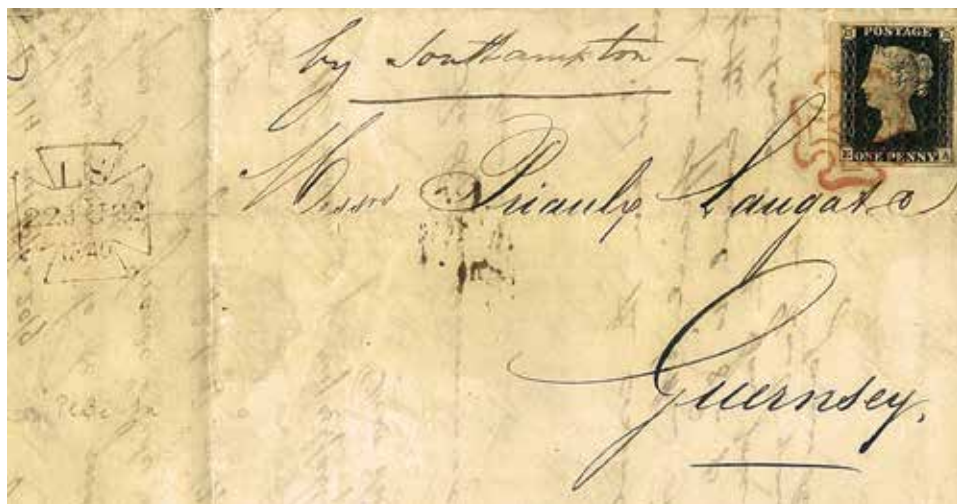
With reference to the article on pages 17/18 of the June issue about 'Red Cross Crash Mail' it may be of interest to members to know that Mrs. C.O.Lacey, to whom the message was addressed, was my wife's aunt.

The family had evacuated to Cornwall and the Germans took over their house in Mount Row, Guernsey for the duration. My mother in law was a Miss Lacey, who married a Jerseyman, and when my wife and I recently visited Mrs Lacey's son, Cecil, now in his upper eighties, he was interested to see the article about his mother's Red Cross message, but he did not offer any additional information.

## 1840 Entire letter from Antwerp to Guernsey via London with a QV 1d black cancelled with London Maltese Cross.

by David Gurney FRPSL

I was interested to read in the September 2018 London Philatelist an article written by Patrick Maselis RDP FRPSL, President of the Royal Philatelic Society London, highlighting this unusual entire letter dated 20<sup>th</sup> June 1840 from Antwerp, Belgium addressed to Messrs Priaulx Lauga & Co, the principal Guernsey merchant family of the 18<sup>th</sup> and 19<sup>th</sup> centuries. The QV 1d black plate 1A applied is cancelled with a London Maltese Cross in red ink and the obverse shows a Lombard Street, London transit datestamp. Patrick has agreed that I may use much of his text and illustration which follow on the carriage of this particular double sheet letter. I am delighted to be able to include this in the Journal for the benefit of our members.



This letter, sent by the shipping company Osy & Cie in Antwerp, referred to a shipment of Brazilian coffee just landed by Priaulx's ship, 'Sophia'. Since 1840 the Belgian Post had had the monopoly for forwarding letters and the only legal way was to hand it to the Post Office where the addressee would have been charged the official rate of 1/6d (GPO 1828). However it was presumably more convenient for the letter to be handed to someone then travelling to London where upon it was eventually handed in at the Lombard Street, London, Post Office where the then inland rate of 1d

was charged for carriage by the General Post Office to the addressee in Guernsey – rather less than the rate from Antwerp of 1/6d!

Patrick goes on to mention that a second Belgian letter from the same correspondence is known and I personally feel looking at the content of this long letter that a continuous business and personal relationship between the correspondents had existed for some time with the very considerable sums noted in the letter, thus this arrangement of the private carriage to London was almost certainly more one of convenience rather than cost saving.

A search has been made of the Priaulx correspondence held at the Priaulx Library in Guernsey, but no other letters from this particular connection have been found. This is not to say they do not exist, but most regrettably the Priaulx correspondence was ransacked some many years ago for its philatelic content of entire letters and wrappers.

Unfortunately no record has been maintained of inward letters to Guernsey as outward letters have always been felt to be more important. Thus I encourage members to look carefully at their collections and see whether a similar letter can be reported as such incoming letters to Guernsey which may have been written abroad and then franked with a GB stamp or stamps in this country are by their very nature extremely scarce.

**Acknowledgement:**

The London Philatelist Volume 127/327 No 1458 September 2018.

## **GUERNSEY MONTHLY MEETINGS**

**CISS and RPSL members are welcome  
to attend monthly meetings in  
Guernsey, contact John Triggs on  
01481 725847 or [jtriggs@cwgsy.net](mailto:jtriggs@cwgsy.net).**

**Meetings held on Friday evenings, starting at 7pm  
in the St Sampson suite at the Peninsula Hotel. Next  
dates are December 14<sup>th</sup> 2018 and March 22<sup>nd</sup> 2019.**

## **DISPOSAL OF YOUR CHANNEL ISLANDS COLLECTION**

If you or your relatives wish your collection to be sold for any reason the Society can help you by arranging for its disposal within the C.I.S.S. through the Society's auctions and circulating Packets which can provide:

1. Best realisation of value to owner or dependents.
2. Demand for Channel Islands material remains high.
3. Modest commission on sales of only 10% plus 2% insurance.

Several collections have been sold successfully to the benefit of the owners. If interested, please contact our Secretary

Richard Flemming at [rflemming@talktalk.net](mailto:rflemming@talktalk.net)  
or by telephone 01455 613826.

## **CHANNEL ISLANDS' LOCAL ISSUES**

**HERM, JETHOU, LIHOU,  
ALDERNEY PARCEL DELIVERY SERVICE,  
COMMODORE SHIPPING COMPANY,  
CHAUSEY AND OTHER FRENCH CHANNEL ISLANDS,  
PRIVATE ISSUES AND REVENUES.**

### **Regular retail lists and auctions**

Please contact me for your copy today.

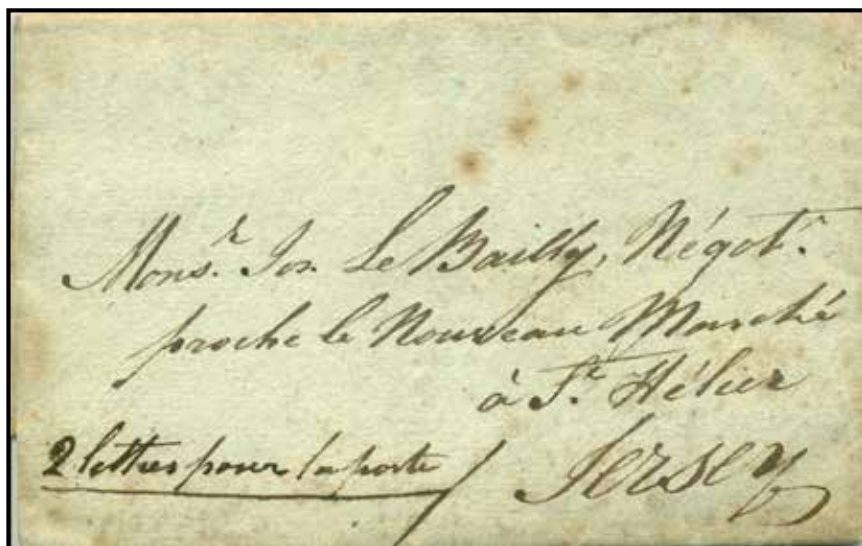
**JON AITCHISON**, Old Tithe Hall, Start Hill,  
Near Bishop's Stortford CM22 7TF, United Kingdom.  
Telephone U.K. 01279 870488. Email [britishlocals@aol.com](mailto:britishlocals@aol.com)

## Two '*Letter Forwarding Agents*' in Jersey – '*Care of*' or actual? by David Gurney FRPSL

When I researched and compiled my book *Letter Forwarding Agents of Great Britain handling Channel Islands letters 1673 – 1855* I was curious with a number of names that seemed to have no basis to fit the rules. Further there were some names of Channel Islands' agents in Kenneth Rowe's *THE POSTAL HISTORY AND MARKINGS OF THE FORWARDING AGENTS*, which left me wondering as the book to all intents and purposes is only a listing by city and then by name of Agent, but with no overall name index at all. It has no evidence of origin with Channel Island related names which appear to have just been taken directly from the Late Bill Newport's various publications on Channel Islands postal history.

In several cases I sought to establish whom these names were, their occupations and backgrounds together with evidence of actual letters in existence, but drew several blanks. Now evidence has come to light in the form of two such doubtful letters purchased from the Late Brian Brookes sale of his magnificent Channel Islands postal history collection auctioned in March 2018 by Argyll Etkin Limited in London. These are.....

### J. Le Bailley or Jos Le Bailly.



This entire letter dated the 9<sup>th</sup> November 1822 written in Coutances, France had been carried privately to Jos. Le Bailly, a Merchant, near the new Market in St. Helier, Jersey with the interesting endorsement 2 lettres pour la porte. This letter reads:

*“My dear Brother,  
I have just learned that Captain David sails tomorrow and I only have time to post the enclosed letter. The gentleman who sends it is living with me and in order to oblige him I have promised him that you will receive his letters from England so that you can forward them to me. As a result, they will be addressed to Jersey and you will let me know the cost each time. The gentleman is called Critchell, Lieut. R.N.  
You can see that I have considered you as a man of his word, but be patient because you will see many others.”*

In the course of my recent enquiries Ron Brown FRPSL mentioned that he had some twenty letters bought many years ago, from whom he could not recall, which are mainly, as in this case, between Le Bailly's brother in Coutance, who ran a French Boarding School there and Jos. Le Bailly in Jersey. In no case is there any suggestion of a commercial Letter Forwarding Agent involvement in the period 1821 to 1833.

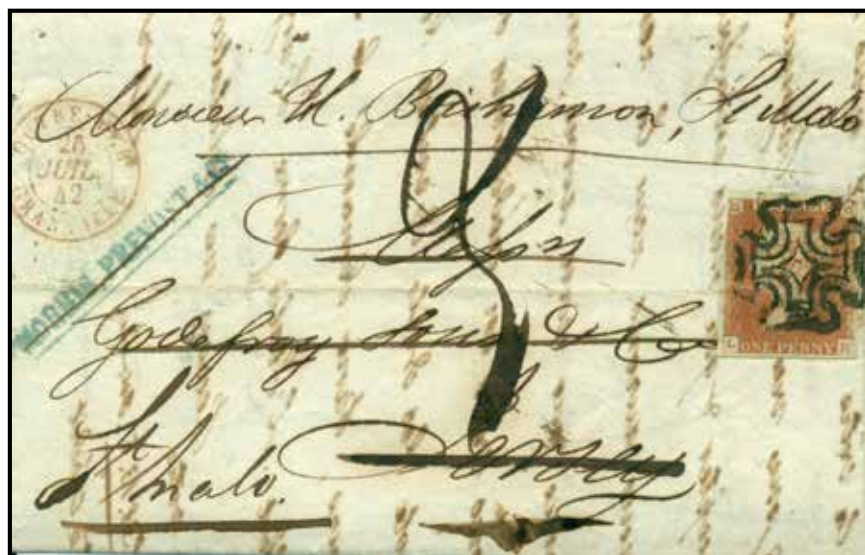
A Josua Le Bailey is recorded in Jersey as a ship owner 1839-1870 and this I stated in my book. So, does anyone else have any correspondence to or from J. Le Bailly or Bailley in Jersey in their collections? If so, then I would very much like scans and details please.

## **Godefroy Sons & Co**

This interesting entire letter illustrated on the next page has been written and posted in London by MORRIS, PREVOST & Co, note their straight line cachet in blue ink, with a QV 1d red-brown cancelled with a London Maltese Cross, addressed to Jersey on July 21<sup>st</sup> 1842.

On arrival in Jersey it was re-addressed and sent on to St.Malo, via Granville, on 26<sup>th</sup> July and arrived in St. Malo on the 27th July where a 3 decime charge was paid.

The letter itself is commercial relating to acceptance and payment of a Bill of Exchange at three days sight and goes on to mention import duty on French wines and Cognac in barrels etc. Quite a personal letter!



The back of the entire letter showing the London, Jersey and St. Malo datestamps.



I have had several almanacs for the period 1842 and 1843 checked by the Lord Coutanche library in St Helier and although 'Proprietaires Agents' are listed beside registered ships, the name Godefroy does not appear against any. There is no separate listing for such an occupation category either. The Library have also checked the Almanachs de la Chronique de Jersey 1839 – 1844 and can find no mention of Godefroy Sons and Co, nor are there any newspaper advertisements on micro-fiche for this company either, not even in the French language L'Impartial newspapers.

Why this name has been previously recorded as a Letter Forwarding Agent is quite beyond me and if any member can show evidence to me of other letters, I will be most interested to see these. It is clearly just an interesting letter in its own right addressed to Jersey and then re-addressed to St. Malo. Both these two letters have provided the evidence I sought in that they appear to be the source for these listings by the Late 'Bill' Newport very many years ago and thus carried forward in other publications. Probably the oldest practice known where one author carries forward the statements of another in the belief the information is correct. Unfortunately such accuracy can be very difficult to trace particularly where sources of information are not given. These two names first recorded by the Late O.W.Newport in his writings on Channel Islands postal history and subsequently listed in his later books and also by Stanley Gibbons in their subsequent catalogues of Channel Island stamps and postal history were also repeated in the lists of Letter Forwarding Agents in Kenneth Rowe's 1984 ***THE POSTAL HISTORY AND MARKINGS OF THE FORWARDING AGENTS***, but with no source given for these particular names other than the Bibliography of relevant published titles.

I suspect these entire letters were bought by the Late Brian Brookes many years ago on the basis these were handled by two possible Letter Forwarding Agents rather than merchants or ship owners? The two translations kindly made by Peter Kelly FRPSL this year have now shown the full contents of these brief letters and coupled now with the several enquiries I have made, in the absence of other examples, leads me to the firm conclusion that these two names are not Letter Forwarding Agents in the pure and acknowledged sense

Thus I would be very pleased to receive scans and/or information from members should they have other examples of letters to or from Jos Le Bailly and/or Godefroy, Sons & Co in Jersey during the 1820s to the 1840s.

# **JERSEY and GUERNSEY**

**A large stock of all issues from their first issues in October 1969 to date. Our stock includes Mint, Used, FDC and Presentation Packs also a large Stock of Pre-Independent issues of Occupation and Regionals.**

**Send for our latest Price List today (Free of Charge) and see for yourself.**

**We also stock C. I. Postal History & Postcards L.L. and Allix wants list welcome.**

**G. ROBBE LTD    PTS**  
**YORK CHAMBERS**  
**YORK STREET**  
**ST HELIER JERSEY JE2 3RQ**  
**TEL 01534 723084 FAX 01534 767680**  
**E.MAIL: [robbestamps@hotmail.com](mailto:robbestamps@hotmail.com)**

## A green GUERNSEY part Customs parcel post label

by John Triggs FRPSL

I have recently acquired this green type 4 Guernsey Parcel Post label and attach a scan below.

I have looked in Mackay's parcel post book and S.G. Channel Islands postal history catalogue and Newport's books and cannot find this particular group type where the "Office Stamp" is in upper and lower case letters as all those illustrated have 'OFFICE STAMP' in upper case letters. This particular style of label was in use between 1891 and 1905 and the QV 6d purple stamp was applied to pay the postage.



James Mackay apparently did not address the Channel Island labels in any

depth in his 1982 book, **THE PARCEL POST OF THE BRITISH ISLES**. I am told by Nick Wraith, who is co-authoring with Max Melrose, a new book on Parcel Post labels which will probably be published in due course.

The white labels with the 'B' Coat of Arms had the whole of "OFFICE STAMP" in upper case letters whilst the green Customs Parcel Post labels, for both Jersey and Guernsey, had the words "Office Stamp" in mixed case letters.

My thanks to David Gurney FRPSL for his help in this connection.

I will be interested to hear from any member who may have similar examples in their collections which could be published in this Journal.

## **ALDERNEY – The Sub-Post Office re-opens in September 1945.**

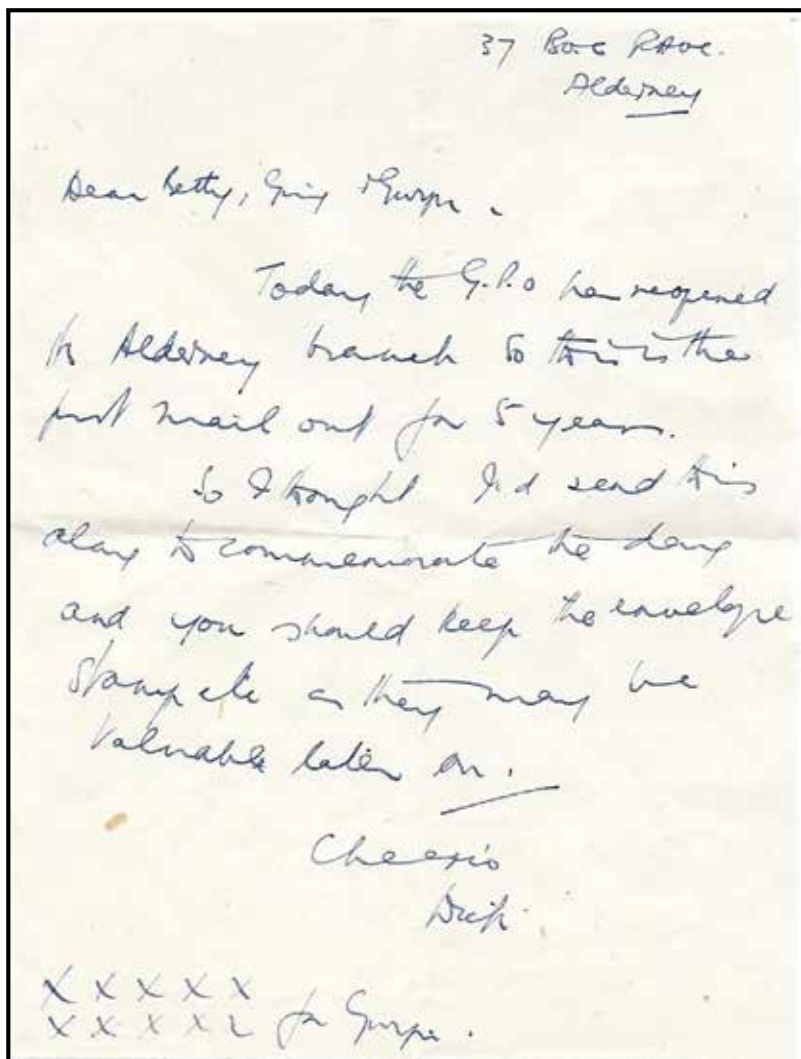
by David Winnie

This office closed on the 23<sup>rd</sup> June 1940 upon the final evacuation of Alderney residents as a consequence of the German Occupation of the Island. David Gurney FRPSL in his book *"The Post Office in the Smaller Channel Islands"* states that it has long been believed that the Sub-Post office re-opened for business on the 21<sup>st</sup> September 1945. There is, however, no official note of this.



However I have recently acquired the above cover with the important contents shown on the next page which now provides confirmation that this date is indeed correct. The cover shows a King George VI 2½d definitive clearly cancelled by the ALDERNEY 24mm single circle datestamp for the 21<sup>st</sup> September 1945 with the enclosed letter providing the appropriate evidence.

I quote "Today the GPO has reopened the Alderney branch so this is the first mail out for 5 years. So I thought I'd send this along to commemorate the day and you should keep the envelope stamp etc as they may be valuable later on".



## Rejected Proof design of the war-time 1d Arms stamp of Guernsey by David Gurney FRPSL.

At the September Society meeting at the Union Jack Club, Ron Brown brought with him this very rare block which I first discovered in an auction lot of Channel Islands material, I think, at a Phillips auction in London in 1997. I successfully bid for and purchased this lot having first discussed the find with Alan Moorcroft to whom I eventually sold the block as his interest in the German Occupation was far greater than mine. Some years later Alan sold major parts of his C.I. collection to a well known GB dealer who on sold this collection to another client who in turn subsequently some years later re-sold the collection back to the dealer concerned.



Recently this same block was sold to Ron Brown by the dealer concerned! This will now feature in Ron's forthcoming book on the Occupation stamps of the Channel Islands.

I first published the results of my research in our Journal, *Les Iles Normandes*, in July 1999 Vol 15 No.2 which I am reproducing below as this is an important block:

Following the liberation of the Channel Islands from the German military occupation in World War II an official report was submitted on the 12<sup>th</sup> May 1945 by the Acting Head Postmaster in Guernsey, Mr H. C. Chappell, to the Regional Director of the South Western Region of the General Post Office in England. This summarised the Post Office operations in Guernsey during this difficult and isolated period: 1940-1945. Mr Chappell records how he sought an interview with the Bailiff of Guernsey on the 22<sup>nd</sup> November 1940 in regard to the exhaustion of stamp stocks. The following extract is reproduced: "*It was emphasised that supplies of the ½d and 1d denominations would soon be exhausted and that it would be necessary to print stamps locally or make other arrangements for the payment of postage in cash over the counter at the Head and Sub Offices,*

*expressing the opinion that, from the public point, the only convenient and satisfactory method of payment was by means of stamps and **intimated that he would obtain designs from the local printing establishments** and take up the question with the German authorities.*“

Much is known and published in regard to the design of the 1d Arms stamp by E. W. Vaudin which was submitted by The Guernsey Press Company. Both the accepted Essay (Design ‘A’) and the unaccepted Essay (Design ‘B’) are displayed in the search room of the Greffe in Guernsey. The story of the submission of the amended design and its subsequent printing has been well documented.



**Design ‘A’**



**Design ‘B’**

However it is not generally known that proofs of a different design of postage stamp were also submitted by The Guernsey Star & Gazette Ltd on the morning of the 26<sup>th</sup> November 1940. The written quotation indicated:

***‘To be supplied in sheets of 120 stamps,  
printed in one colour, perforated and  
gummed  
2s.11d. per thousand stamps.’***

These proof designs together with those submitted by The Guernsey Press Company were considered by the Royal Court at a sitting held in private on the 30<sup>th</sup> November 1940.

The E. W. Vaudin **Design ‘A’** submitted by The Guernsey Press Company was selected by the Court, except that the word ‘GUERNSEY’ had to be straight instead of curved in the final design.



**Final stamp design**

But, what happened to the proof designs submitted with the above mentioned quotation by the Guernsey Star & Gazette Ltd that were not accepted by the Royal Court?

Following the Royal Court discussions the rejected proof designs were returned to the Secretary of the Guernsey Star & Gazette Ltd advising that a proof design submitted by The Guernsey Press Company had been accepted. To my knowledge no record of this rejected proof design submitted by the Guernsey Star & Gazette has survived, or has it?

In September 1997 I purchased a block of stamps at auction which were in a small lot of Occupation covers emanating from a Channel Islands collection. I have subsequently been advised by the Auction House that this collection had been in the hands of the elderly vendor for at least some 50 years.

The block appears to have come from the top left corner of a sheet with selve-edge and is perforated 11. Central to the design of each stamp is the coat of arms and sprig contained in the Seal of the Bailiwick which also forms part of the logo of the States found on printed stationery and is identical to the first printings of the Sales Tax stamps also produced by the Guernsey Star & Gazette just prior to the 20<sup>th</sup> August 1940. The stamps have the value of ONE PENNY / POSTAGE and are red



in colour. The whole block in my possession is without gum and has a tiny rust mark in the top left selve-edge margin. Although the Guernsey Star & Gazette was responsible for the entire printing of the Sales Tax stamps the paper used for this block of stamps is dis-similar to that used in the Sales Tax printings being slightly coarser and uncoated; the Sales Tax stamps also have a slightly different perforation, being 13 x 11. However, these points are not specifically important in

themselves, as several months elapsed from the date of the first printing of the Sales Tax stamps.

Official Guernsey sources suggest there was considerable debate at the time between some *Jurats* over the proposed change in use of the Island device (or arms) as appears on the coinage and at the head of all Official Guernsey Gazettes and Notices as illustrated in the Seal. Strong feelings seem to be held that the sprig or 'rameau' at the left hand top of the Seal should not be removed from the design of the stamps. These arguments failed.

Following a number of exhaustive lines of enquiry, I believe from the evidence accrued to date that this block of four stamps reflects the rejected proof design of the Guernsey Arms stamps submitted by The Guernsey Star & Gazette newspaper. I should be most interested to hear from any Member who may be able to contribute further to these enquiries.



**Note:** In 1999 I submitted this block for an opinion to the Expert Committee of the Royal Philatelic Society London and a Certificate of genuiness No. 175366 was issued on the 8<sup>th</sup> December 1999. DG.



## Feldpost registered letter used from Sark by Olaf Beecken.



This very rare registered fieldpost letter was written by a member of unit 28916C, 6<sup>th</sup> company 583 Infantry Regt to Offenbach/Main on 8 November 1942 with an arrival back stamp of Offenbach dated 11 November '42.

German units deployed on Sark were supplied by the field post office in Guernsey (Kenn. No. 937a).

Sark did not have a German fieldpost office at any time during the war.

In his book on wartime Sark **“Mined Where You Walk”** the author Richard Le Tissier states that the German units of 583 Infantry Regiment and 584 Infantry Regiment were usually on Sark for a three-month tour (see page 100). Unit 28916C was on Sark in 1942 from the end of March to June and again from the end of September to December (see also page 103).

## ANY UNWANTED SOCIETY JOURNALS?



Please do **not** throw your Journals or old Bulletins away. Send to the Membership Secretary, Mark Bailey 36, Jerrymoor Hill, Finchampstead Wokingham RG40 4UG for recycling to others.

### **Extraordinary General Meeting held Saturday, 24<sup>th</sup> September 2018**

Twenty-four members attended the EGM held at the Union Jack Club, Sandell St., London, called so that all members had the required time to consider the proposed amendments to Rule 8(a) concerning the future structure of the CISS Committee going forward as per the notice issued to members on 24<sup>th</sup> August 2018.

David Winnie explained the background behind the recommendation to form an Executive Committee whilst retaining a full Committee for one meeting per annum.

The proposal to ratify that which was previously agreed at the AGM in July to amend Rule 8(a) was proposed by Richard Flemming and seconded by Robert Porter. This was put to the vote with 17 members voting in favour of the amendment to Rule 8(a) as laid out in the discussion paper, four members voted against the proposal, and there were three abstentions. The proposal to amend Rule 8(a) as laid out in the discussion document was therefore passed by majority vote.

**Richard Flemming, Secretary**

## A 2<sup>nd</sup> “Carrefour” Registration label

by David Winnie

I refer to “*Les Iles Normandes*” **Volume 35 No.1** and the article by **Olaf Beecken** in which he shows a hitherto unrecorded registered label which is just printed **CARREFOUR, JERSEY** and numbered 0055. In the article, he asks whether any member can report another example in their collection. At the time, this label was noticeable by its absence from my collection, but not anymore.



As far as I am aware, there was no response to Olaf's request in the Journal and therefore I am assuming that the registered label shown above is the second known. However, I doubt this. Olaf's item is dated the 8<sup>th</sup> December 1945 whereas my cover shows the 5½d rate stamps cancelled by the Carrefour Selous double circle datestamp dated the 7<sup>th</sup> November 1947. What is more, the registered label is numbered 0615 as compared to 0055. This clearly suggests to me that this label was in use for at least two years and therefore there should be many more than just two to have survived.

I would therefore like to repeat Olaf's plea and ask whether any member can report another example of this particular label in their collection.

## New Guernsey Slogan

by Steve Wells



A birthday card sent to my wife via Moonpig.com from a friend in Dubai - where postal facilities are apparently somewhat limited - produced another example of a Guernsey slogan post mark, 'World Post Day'. It seems the online greetings card company mail most or perhaps all of their cards to recipients from Guernsey. Perhaps a local member could investigate?

## FORTHCOMING NEW STAMP ISSUES – 2019.

### GUERNSEY POST

#### 22nd January 2019 - Chinese New Year – Year of the Pig

Set of 6 stamps	£4.26
First Day Cover	£5.46
Presentation Pack	£5.16
Souvenir Sheet	£4.26
First Day Cover	£5.46
Souvenir Sheet pack insert	£4.46
Sheets of 10	£42.60
Limited edition uncut printers sheet	£28.00
Limited edition Gold replica Souvenir Sheet	£95.00

**13th February 2019 - John Wilson, Architect**

Set of 8 stamps	£8.11
First Day Cover	£9.31
Presentation Pack	£9.01
Sheets of 10	£81.10

**Alderney****13th February 2019 - 120 years - Sinking of the SS Stella**

Set of 6 stamps	£4.26
First Day Cover	£5.46
Presentation Pack	£5.16
Souvenir Sheet	£4.26
First Day Cover	£5.46
Souvenir Sheet pack insert	£4.46
Sheets of 10	£42.60

**Post and Go: 13th February 2019 - 50th Anniversary of the Old  
Guernsey Car Club**

Collectors Strip	£4.26
Collectors Set	£25.56
First Day Cover	£5.46
Presentation Pack	£5.16

**JERSEY POST****4th January 2019 Lunar New Year – Year of the Pig**

One stamp	50p
First Day Cover	£1.65
Presentation Pack	£1.65
Miniature Sheet	£1.00
First Day Cover	£2.15
Presentation Pack	£2.15

**18th January 2019 1970s Popular Culture**

Set of six stamps	£4.79
First Day Cover	£5.94
Presentation Pack	£5.94

Miniature Sheet	£2.00
First Day Cover	£3.15
Presentation Pack	£3.15
Souvenir Sheetlet	£4.79
First Day Cover	£5.94
Presentation Pack	£5.94

### **5th February 2019 Historical Figures – Sir Walter Raleigh, Governor of Jersey**

Set of six stamps	£4.79
First Day Cover	£5.94
Presentation Pack	£5.94
Miniature Sheet	£2.00
First Day Cover	£3.15
Presentation Pack	£3.15

### **13th February 2019 Post & Go – Durrell: Endangered Primates**

Set of six stamps	£4.79
First Day Cover	£5.94
Presentation Pack	£5.94

### **13th February 2019 1970s Popular Culture – Stampex overprint**

Miniature Sheet	£2.00
First Day Cove	£3.15

### **5th March 2019 Europa 2019 – National Birds – Birds & Symbolism**

Set of six stamps	£4.79
First Day Cover	£5.94
Presentation Pack	£5.94
Souvenir Miniature Sheet	£1.70
First Day Cover	£2.85
Presentation Pack	£2.85

Due to the loss of LVCR, Jersey Post now collects the appropriate rate of VAT on the various products at the point of sale and pre-pays HMRC on all orders entering the UK. Post & packing charges CI - £1.85, UK - £1.94 (incl. VAT), Europe - £ 2.00 and the Rest of the World - £3.00. Note: This is the basic charge only.

Jersey Post charges 5% GST to Jersey customers on CTO stamps (and complete CTO sheets) only.

## **C.I.S.S. PUBLICATIONS**

**Our current stock of merchandise at  
reasonable prices.**

**However postage is extra and will be invoiced.**

*Write to:* C.I.S.S. Book Sales at 64, Falconers Green, Burbage.  
Hinckley. Leics. LE10 2SX or Email – [rflemming@talktalk.net](mailto:rflemming@talktalk.net)

- |  |        |
|--|--------|
| 1. 'waists getting waspish' – A Guernsey Red Cross study (76pp)  | £6.00  |
| 2. The Post Office in the Smaller Channel Islands (154pp)  | £12.00 |
| 3. The Postal History of the Guernsey Sub-Post Offices (265pp)   | £10.00 |
| 4. Red Cross Postal Message Scheme with the Channel Islands<br>during the Occupation 1940-45 (389pp)                                     | £8.00  |
| 5. Islanders Deported Part 11 (246pp)  | £4.00  |
| 6. The Postal History of the Jersey Sub-Post Offices (376pp)<br>( <u>This book is reduced in price as staples are slightly rusting</u> ) | £15.00 |
| 7. Registered Mail of the Guernsey Sub-Offices 1968-1990 Vol 2   | £3.00  |
| 8. Registered Mail of the Guernsey Sub-Offices 1968-1990 Vol 3   | £3.00  |
| 9. Jersey & Guernsey Slogan Postmarks of the 20th \century (85pp)  | £7.50  |

**Also available:-**

**Binders** for 'Les Iles Normandes' holding 12 issues @ £4.50 each or  
three for £12.50 plus postage.

**Society Ties:** In blue or maroon with CISS motif @ £8.00 each plus postage.

Payment may be made by Visa/Access/Mastercard or Paypal.

Please quote your card number, expiry date and card settlement address.

**Please do not send payment until you receive an invoice  
for the cost of your order plus the postage and packing.**

# Channel Islands

## in London



Interesting Channel Islands features regularly at Grosvenor, home of the only regular major auctions of specialised Great Britain material in London. Each sale is available to view, with additional illustrations, on our website, **[www.grosvenorauctions.com](http://www.grosvenorauctions.com)**, and our exceptional printed catalogues are generously distributed, complimentary copies being available on request.

Consignments for future auctions are cordially invited. Vendor commission rates are highly competitive, negotiable for valuable properties, and fully inclusive with no hidden handling or unsold lot charges. Our payments to vendors are renowned for being prompt and reliable. For free confidential advice and further information contact **Andrew Williams** or **Constanze Dennis** at the address below.

## GROSVENOR

399-401 Strand 2nd & 3rd Floors London WC2R 0LT

T: 020 7379 8789 F: 020 7379 9737 E: [info@grosvenor-auctions.co.uk](mailto:info@grosvenor-auctions.co.uk)

[www.grosvenorauctions.com](http://www.grosvenorauctions.com)